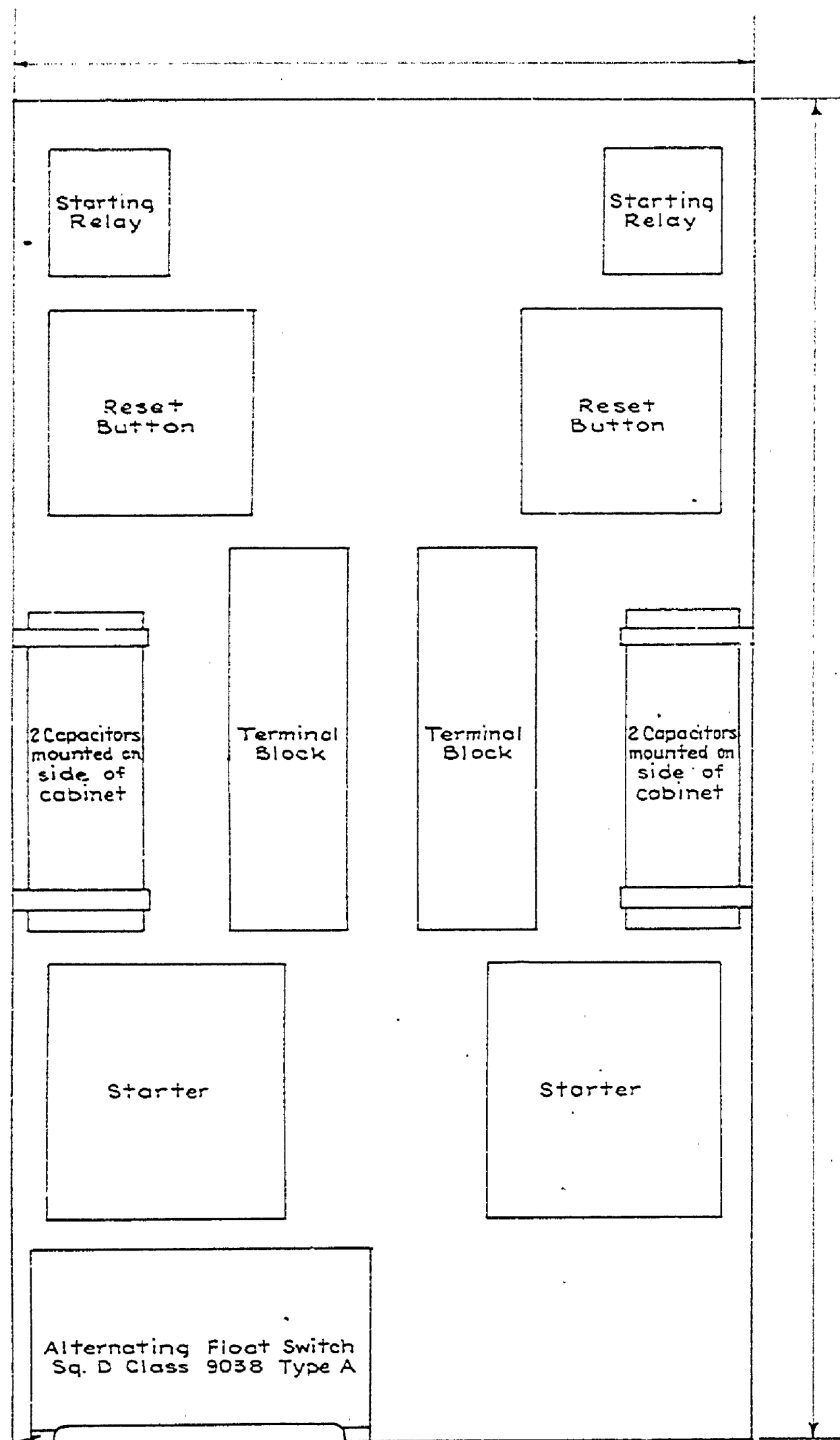
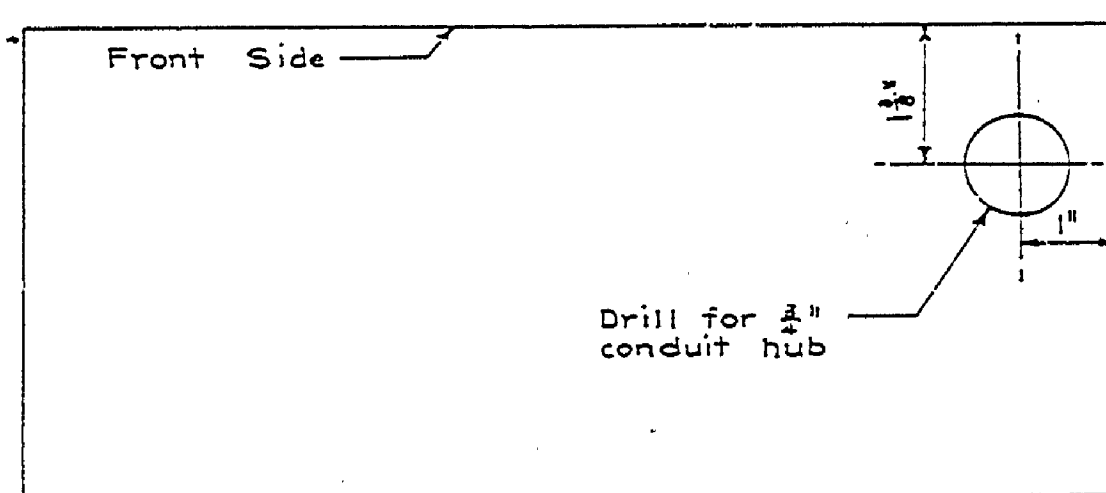


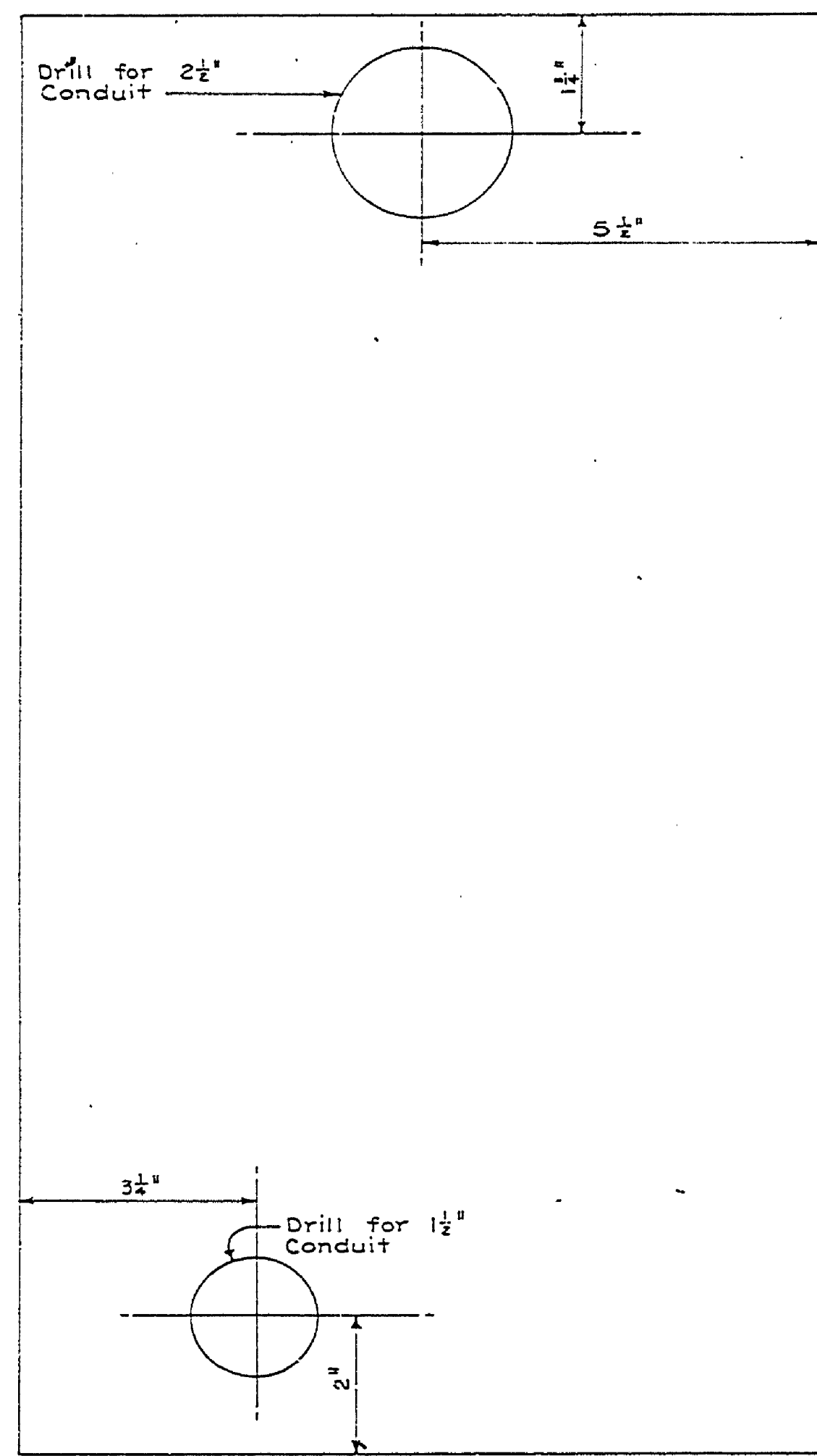
TOP



FRONT



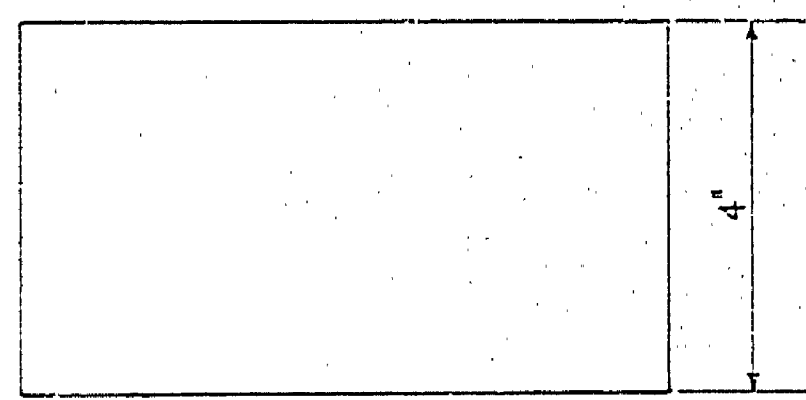
BOTTOM



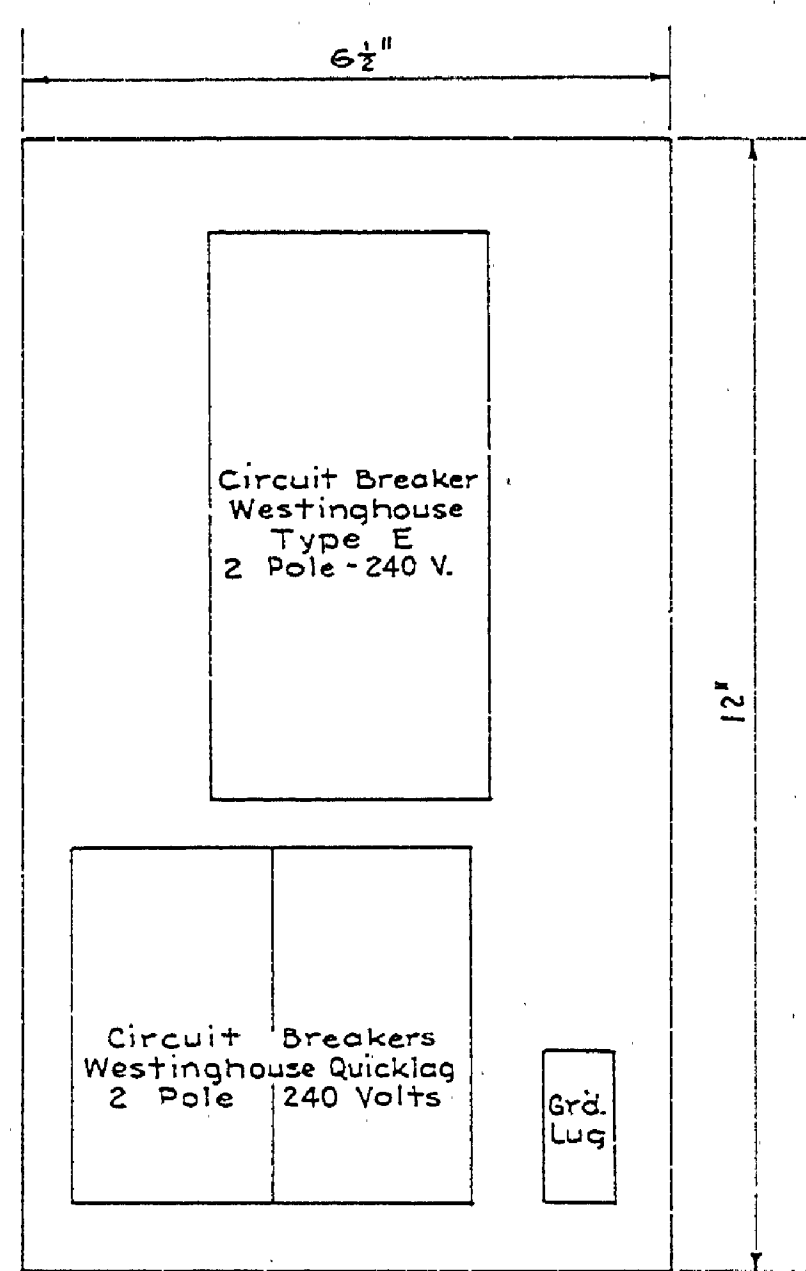
BACK

NOTE:
Cabinet is shown with cover removed

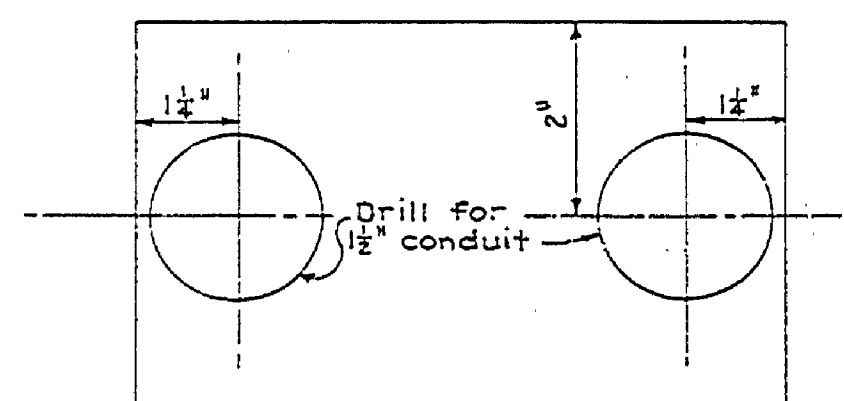
CONTROL FOR DUAL PUMPS
Half Scale



TOP

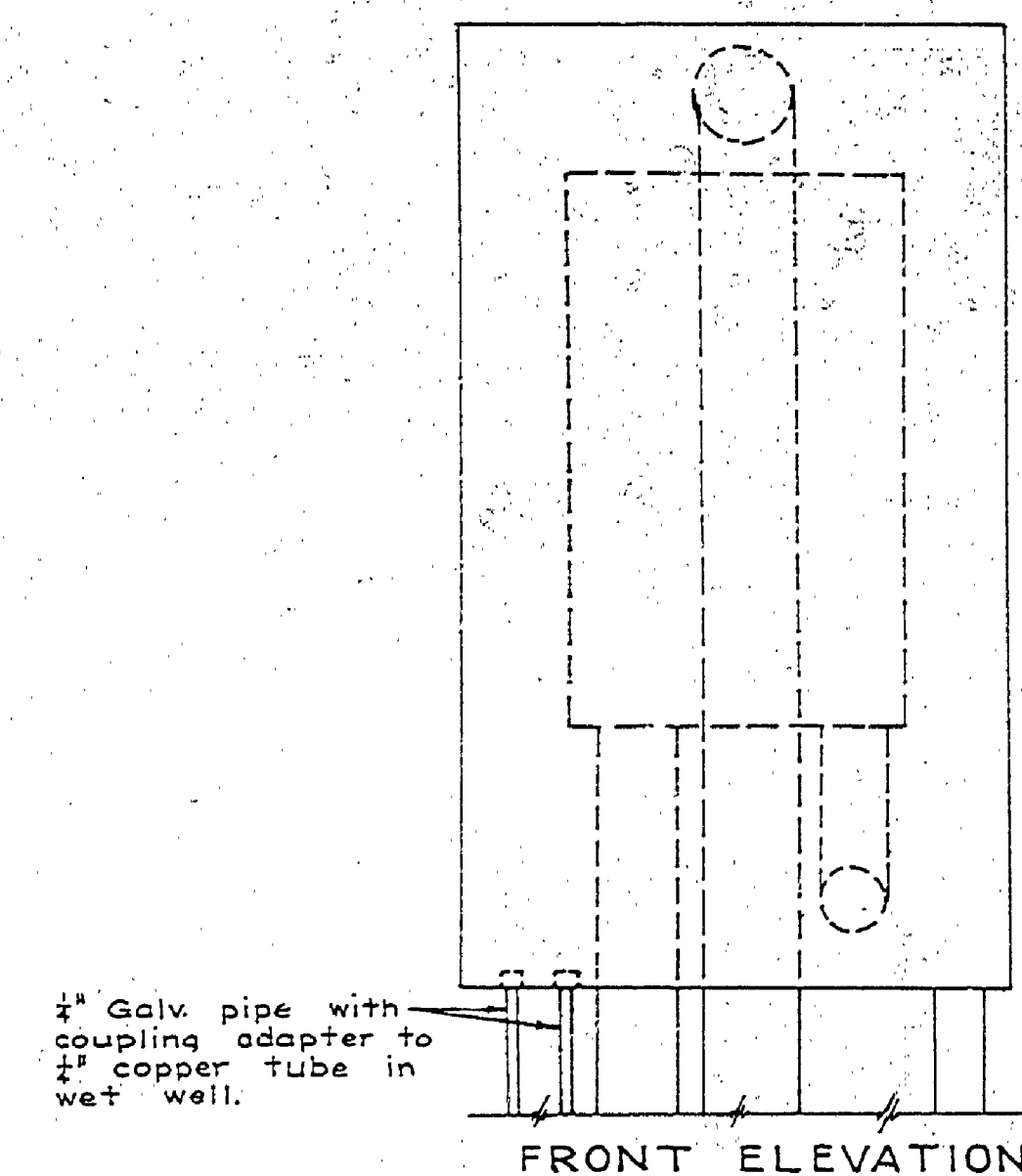


FRONT

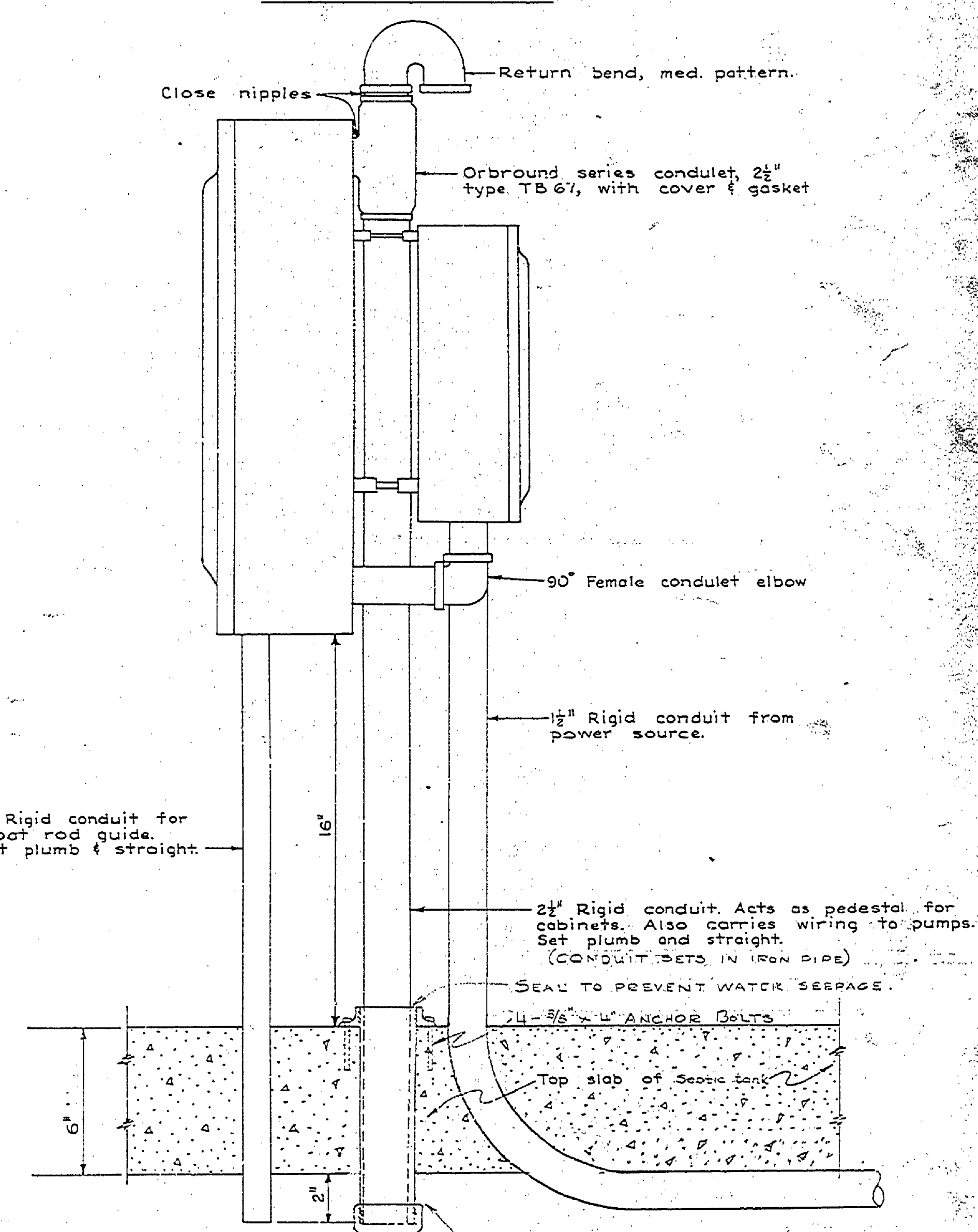


BOTTOM

MAIN DISCONNECT
Half Scale



FRONT ELEVATION



SIDE ELEVATION

SWITCH AND PUMP CONTROL PEDESTAL
3/4" x 1'-0"

NOTES
Do not pour top slab of well until after switch-pump-control pedestal is assembled & set in position in forms for top slab. The 2" pedestal & 1" float rod guide may extend 2" beyond bottom of top slab.

2 1/2" EXTRA STRONG PIPE - 10' LONG.
2 1/2" SCREWED FLANGE, ANCHORED INTO CONCRETE
2 1/2" CAP ON BOTTOM.
DRILL 3" DIA. HOLE

SURVEYED BY	DRAWN BY	COTE	Sept. '60	NO.	DATE	BY	REVISIONS	NO.	DATE	BY	REVISIONS
DESIGNED BY REKELL	9/65	CHECKED BY. WHE		1.				3.			
				2.				4.			

MICHIGAN
DEPARTMENT OF CONSERVATION

220 VOLT - 1 PHASE
PUMP CONTROL PANEL

SHEET NO. 4 OF 4
FOR PROJECT NO. 376-012-38-C2

MITCHELL STATE PARK
SHEET 1 OF 2 PLAN NO. SE-155

E-107