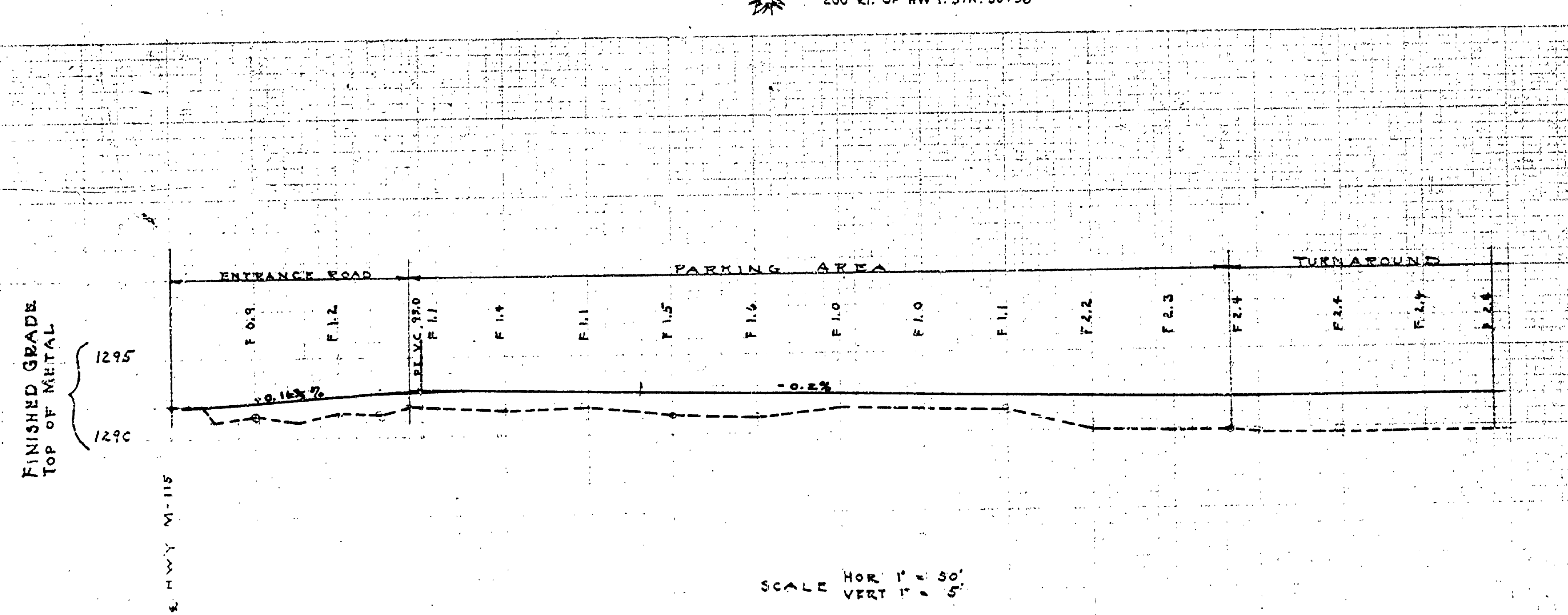
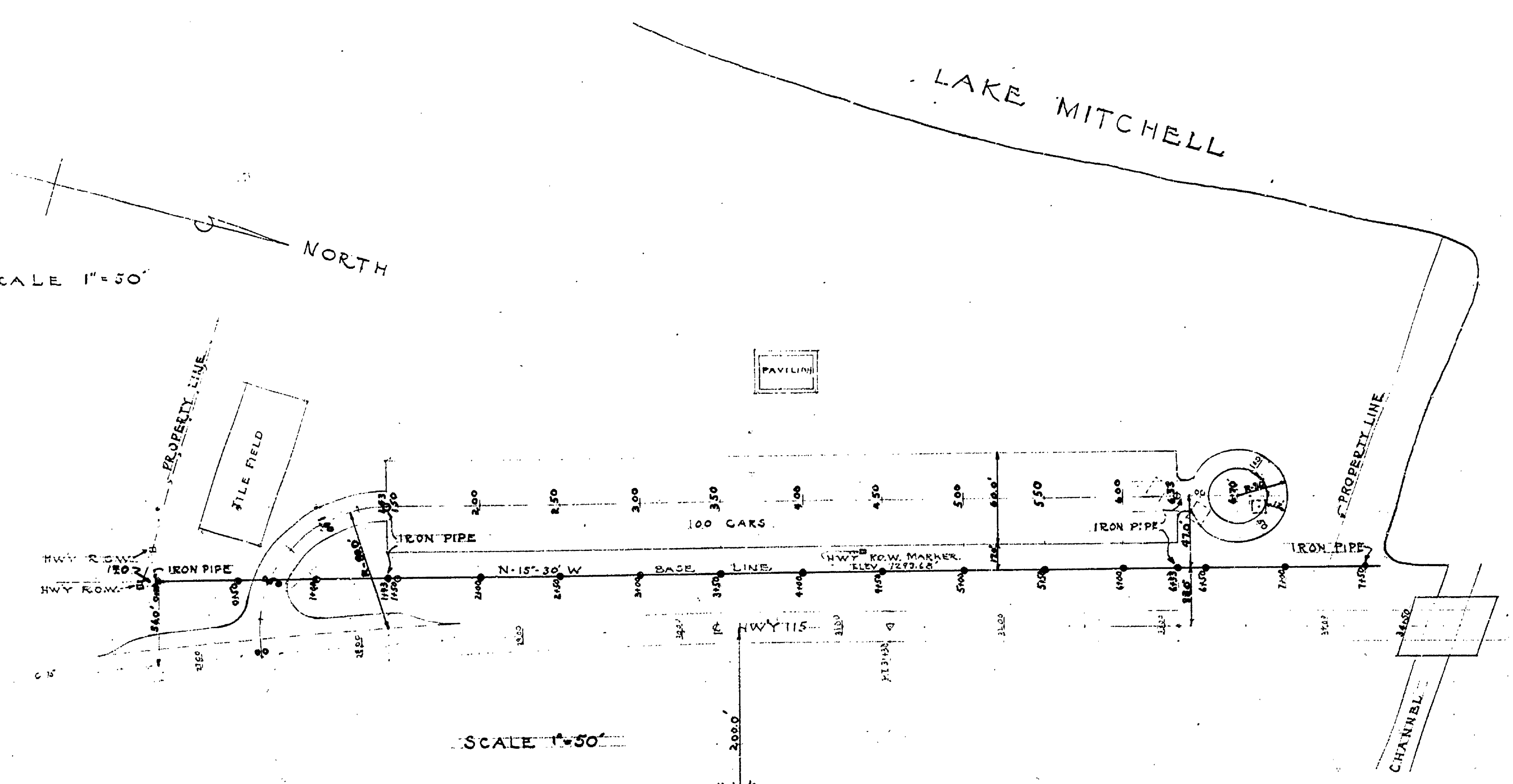


DATE	NOV 6 1959
CHECKED BY	J.I.R.
TRACED BY	J.I.R.
DRAWN BY	L.E.L.
DATE	NOV 6 1959
LANDSCAPE	J.I.R.
ENGINEERING	J.I.R.
ARCHITECTURAL	J.I.R.
REVIEWED BY SECTIONS	
APPROVED BY	<i>[Signature]</i>
DATE	10-8-59
ASSISTANT CHIEF IN CHARGE	
DATE OF DESIGN	10-8-59
NO. DATE BY	
1	
2	
3	
4	
5	
6	
REVISIONS	

SCALE 1"=50'

NORTH



0	1292.0
5	1291.4
10	1290.5
15	1289.8
20	1289.5
25	1289.7
30	1291.2
35	1291.0
40	1291.5
45	1291.4
50	1291.3
55	1290.0
60	1289.9
65	1289.6
70	1289.6
75	1291.6
80	1291.6
85	1291.6
90	1291.6
95	1291.6
100	1291.6

TREES	
7"-12"	25
12"-18"	18
18"-24"	1
TOTAL TO REMOVE	44
EARTH WORK	
CUT	150 CU. YDS.
FILL	1103 "
SR. 30%	358 "
TOTAL FILL	1560 "
BORROW	1840 "
SURFACING	
ENT. ROAD 21' WIDE	336 SQ. YDS.
PARKING AREA 60' "	360 "
TURNAROUND 12' "	200 "
3" COMPACTED 22B	
GRAVEL SURFACE TOTAL	896 SQ. YDS.
	520 CU. YDS.
	870 TONS

765

38%

11'

SCALE - AS NOTED

MI-CHIGAMEN
DEPARTMENT OF CONSERVATION
PARKS AND RECREATION DIVISION

MITCHELL STATE PARK
PARKING AREA
PLAN & PROFILE

SHEET NO.	1	PLAN NO.	L-104
OF	3		