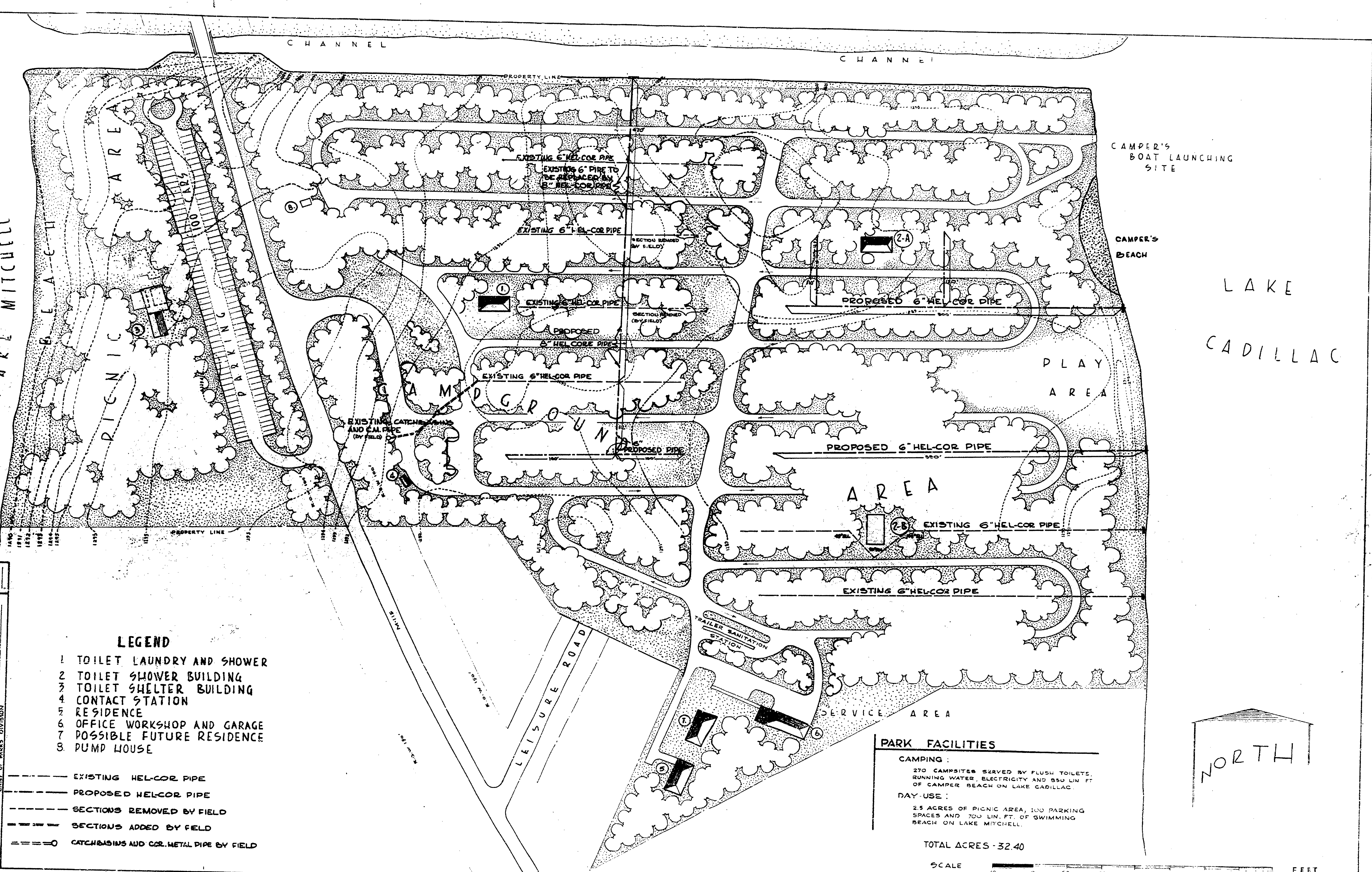


NO.	DATE	BY	REVISIONS
1	1-21-57	J.R.	PRELIMINARY PLAN
2	3-21-57	J.R.	REVISIONS TO PLAN
3	3-21-57	J.R.	REVISIONS TO PLAN
4	3-21-57	J.R.	REVISIONS TO PLAN
5	3-21-57	J.R.	REVISIONS TO PLAN
6	3-21-57	J.R.	REVISIONS TO PLAN



LEGEND

- 1 TOILET LAUNDRY AND SHOWER
- 2 TOILET SHOWER BUILDING
- 3 TOILET SHELTER BUILDING
- 4 CONTACT STATION
- 5 RESIDENCE
- 6 OFFICE WORKSHOP AND GARAGE
- 7 POSSIBLE FUTURE RESIDENCE
- 8 PUMP HOUSE

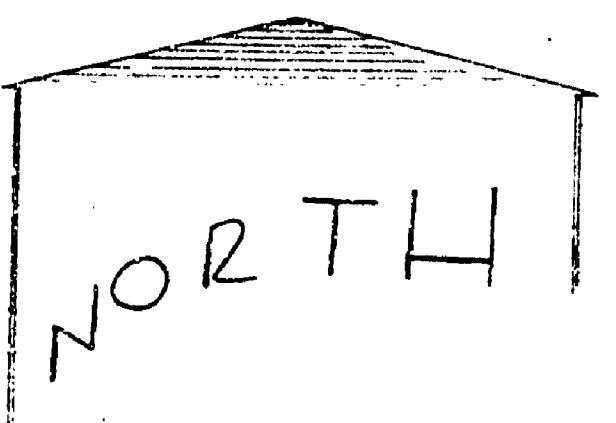
- EXISTING HEL-COR PIPE
- - - PROPOSED HELCOR PIPE
- SECTION REMOVED BY FIELD
- SECTION ADDED BY FIELD
- CATCHBASINS AND COR. METAL PIPE BY FIELD

PARK FACILITIES

CAMPING:
270 CAMPSITES SERVED BY FLUSH TOILETS, RUNNING WATER, ELECTRICITY AND 850 LIN. FT. OF CAMPER BEACH ON LAKE CADILLAC.

DAY-USE:
2.5 ACRES OF PICNIC AREA, 100 PARKING SPACES AND 700 LIN. FT. OF SWIMMING BEACH ON LAKE MITCHELL.

TOTAL ACRES - 32.40



MICHIGAN DEPARTMENT OF CONSERVATION PARKS AND RECREATION DIVISION

MITCHELL STATE PARK REVISED DRAINAGE PLAN

SHEET NO. OF

PLAN NO. L-107