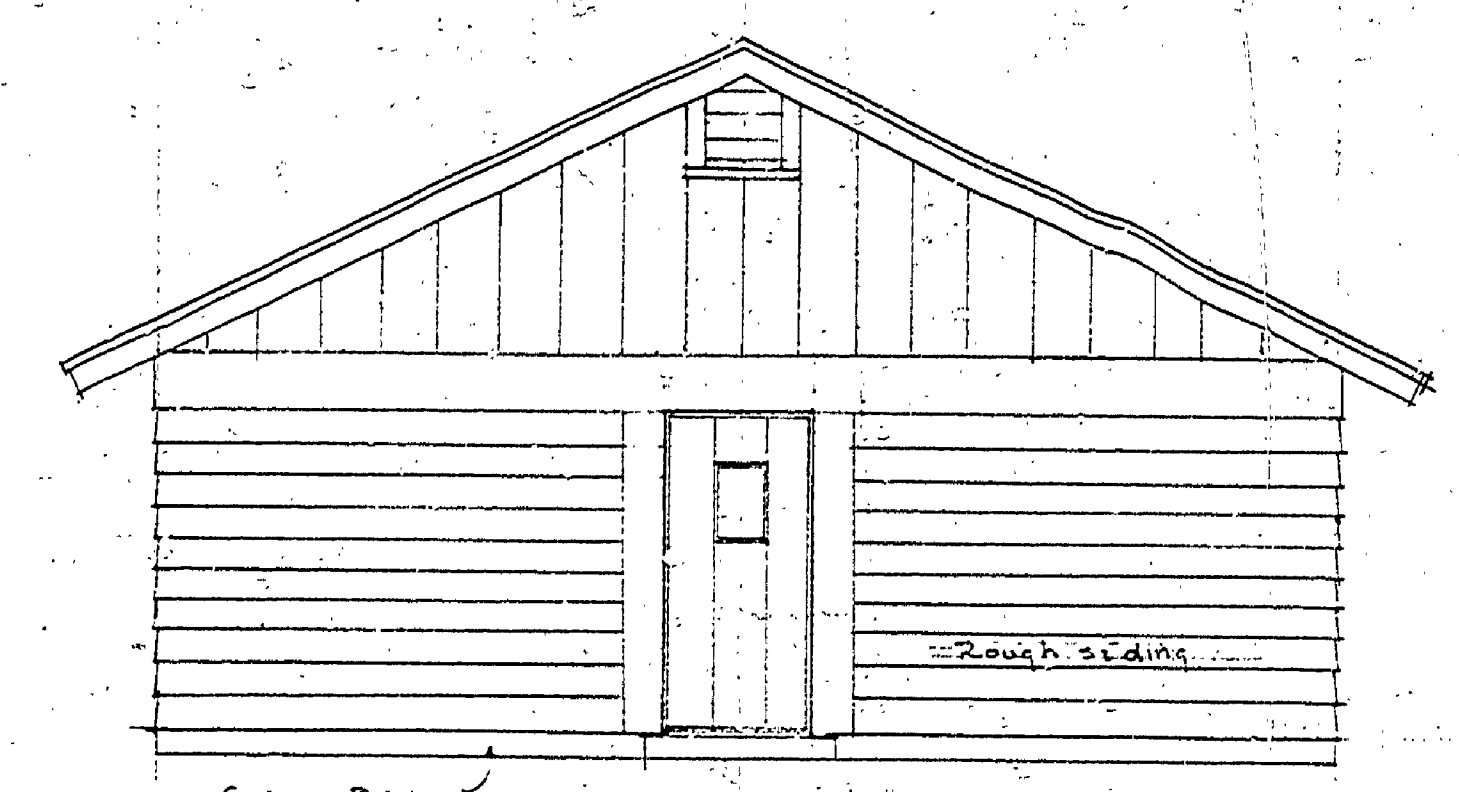
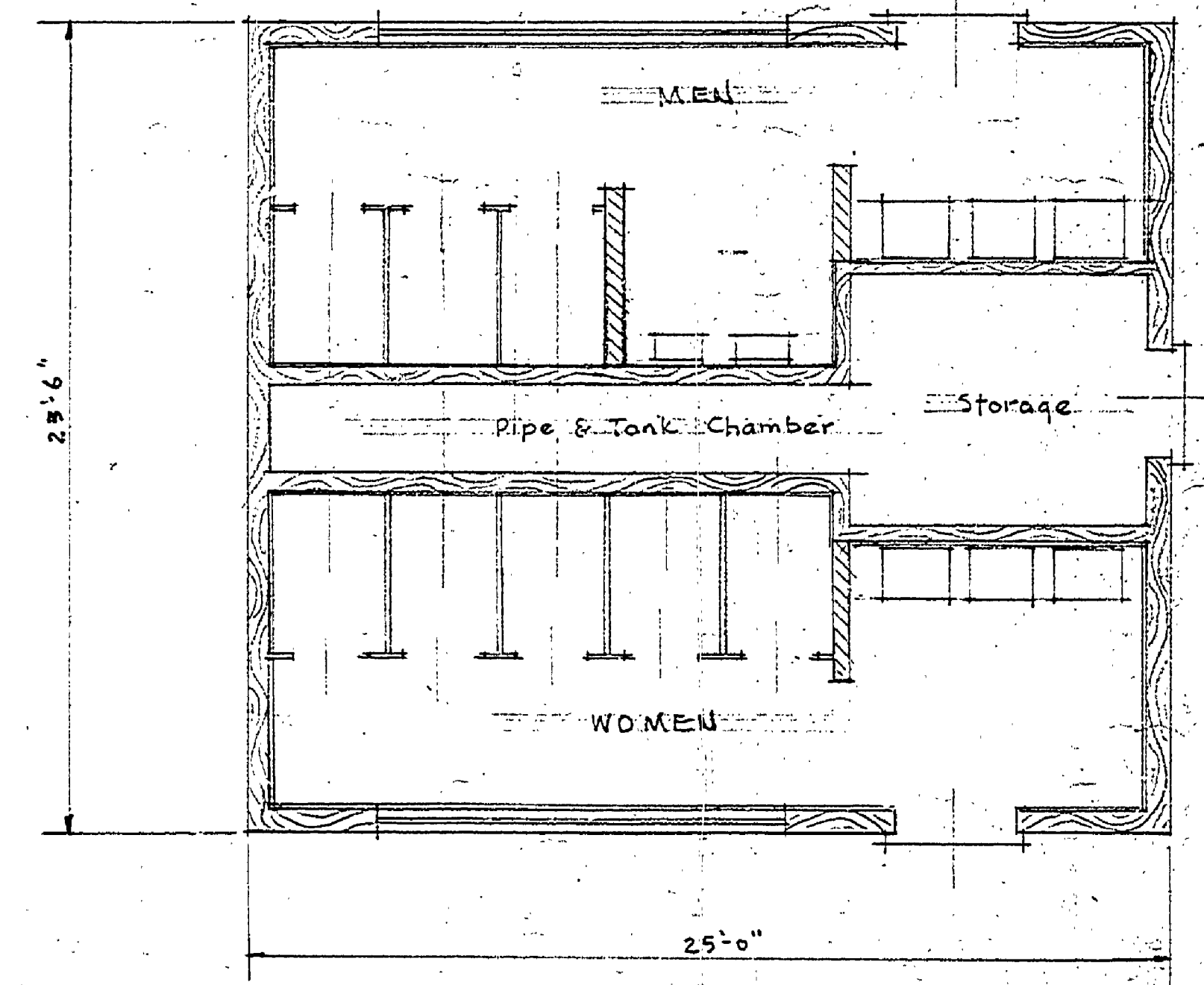


FRONT VIEW



END VIEW



2/11/47
See original plan for
the original Total Plan
for Elevation
Orientation
1943

RE STUDY of
TOILET BUILDING
McLAIN STATE PARK
Horticultural Arch. 2-4-47

COMMISSION APPROVAL *W.B. Smith* date 2/14/47

A-102

Estimated Cost \$6,000