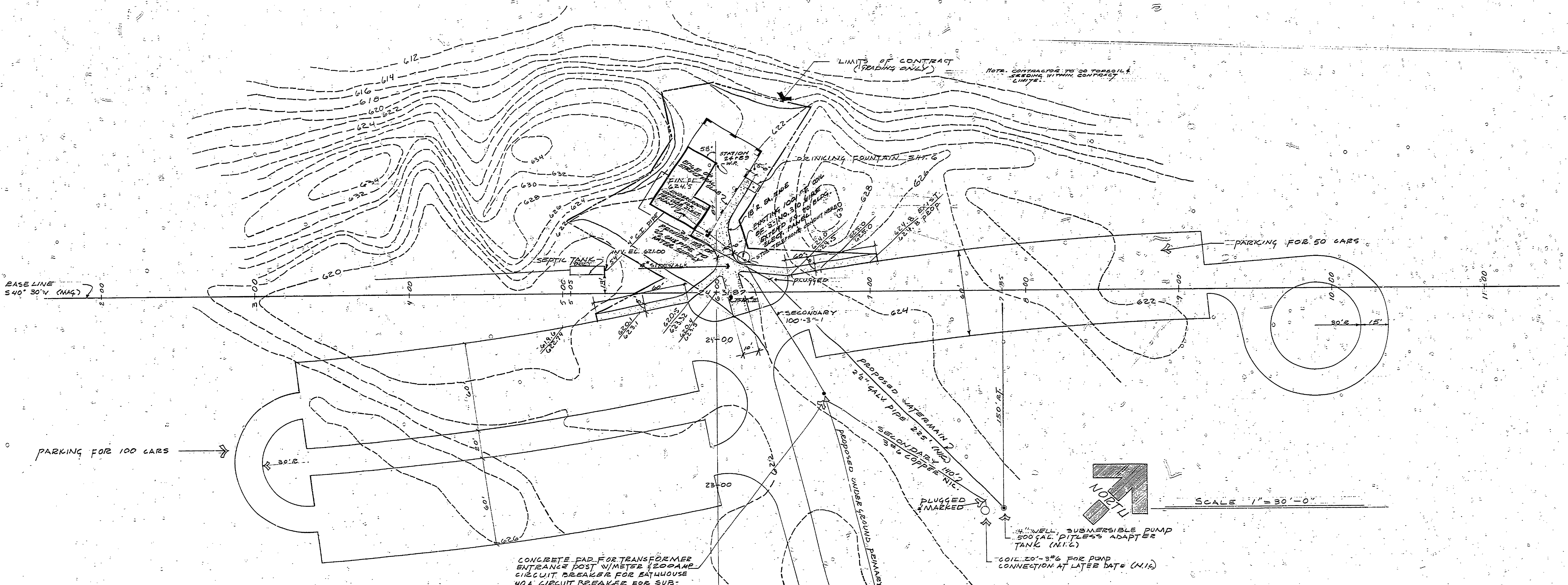


# MCLAIN STATE PARK BEACHHOUSE



BASE LINE  
S 40° 30' W (M47)

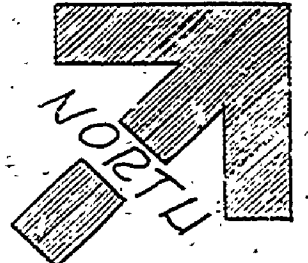
LIMITS OF CONTRACT  
(TRADING ONLY)  
NOTE: CONTRACTOR TO DO TOPSOIL &  
SEEDING WITHIN CONTRACT  
LIMITS.

PARKING FOR 100 CARS

PARKING FOR 50 CARS

CONCRETE PAD FOR TRANSFORMER  
ENTRANCE POST 1/2 METER 200 AMP  
CIRCUIT BREAKER FOR BEACHHOUSE  
40 A. CIRCUIT BREAKER FOR SUB-  
MERSIBLE PUMP CONTROL (N.I.C.)

4" WELL, SUBMERSIBLE PUMP  
500 GAL PITLESS ADAPTER  
TANK (N.I.C.)  
COIL 20'-3" FOR PUMP  
CONNECTION AT LATER DATE (N.I.C.)



SCALE 1" = 30'-0"

NOTE:  
--- EXISTING CONTOUR  
--- PROPOSED CONTOUR  
B.M. #12 EL. 621.40  
PR. NUT & TAG IN N.E. ROOF 12" DIA. 3' HT.  
STA. 6+06 PARKING LOT BASELINE

BUILDING COMMITTEE APPROVAL	
BY: <i>He</i>	DATE 2-17-71
RECOMMENDED FOR APPROVAL: <i>W.G.C.</i> 3-8-71	
ENGINEERING OR ARCHITECTURAL SUPERVISOR, DATE	
RECOMMENDED FOR APPROVAL: <i>Ed Petel</i> 3-12-71	
PROGRAMMING PLAN COORDINATOR, DATE	
DIVISION/REGION APPROVAL	
BY: <i>Paul D. Reardon</i>	DATE 3-17-71
DIVISION CHIEF/REGIONAL MANAGER, DATE	
ENGINEERING-DIVISION	
APPROVED: <i>He</i>	DATE 4-17-71
CHIEF ENGINEER, DATE	

SURVEYED BY	DESIGNED BY	DRAWN BY	CHECKED BY	NO.	DATE	BY	REVISIONS	NO.	DATE	BY	REVISIONS
		G. TOMPKINS	<i>HTC</i>	1.	3/15/71			2.			
				2.				3.			
				3.				4.			

MICHIGAN  
DEPARTMENT OF NATURAL RESOURCES

SITE PLAN &  
COVER SHEET  
SHEET TITLE

AREA OR PARK MCLAIN STATE PARK  
PROJECT BEACHHOUSE

PROJECT NO. 24-1091  
SHEET 1 OF 6  
PLAN NO. A-106-A