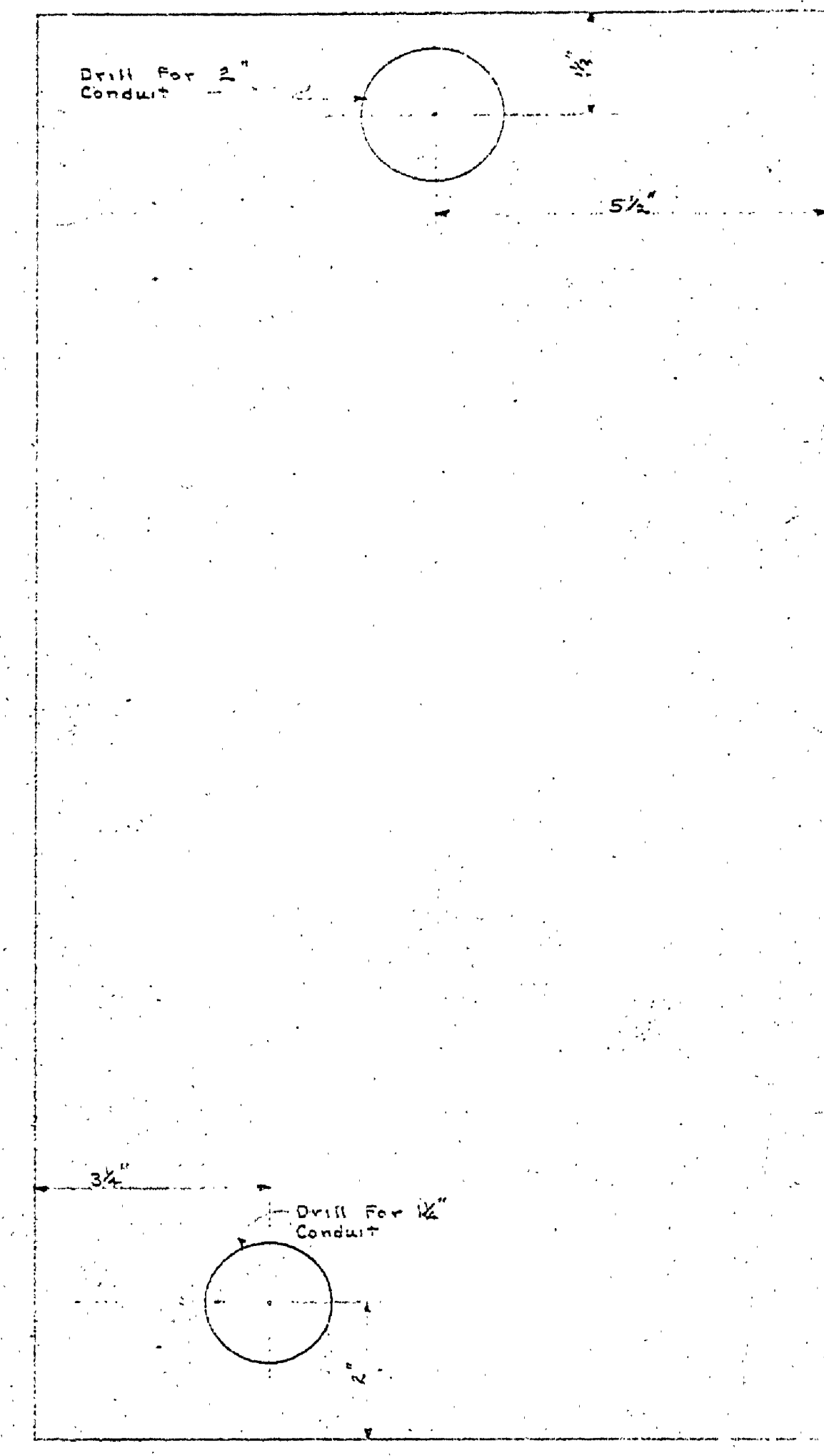
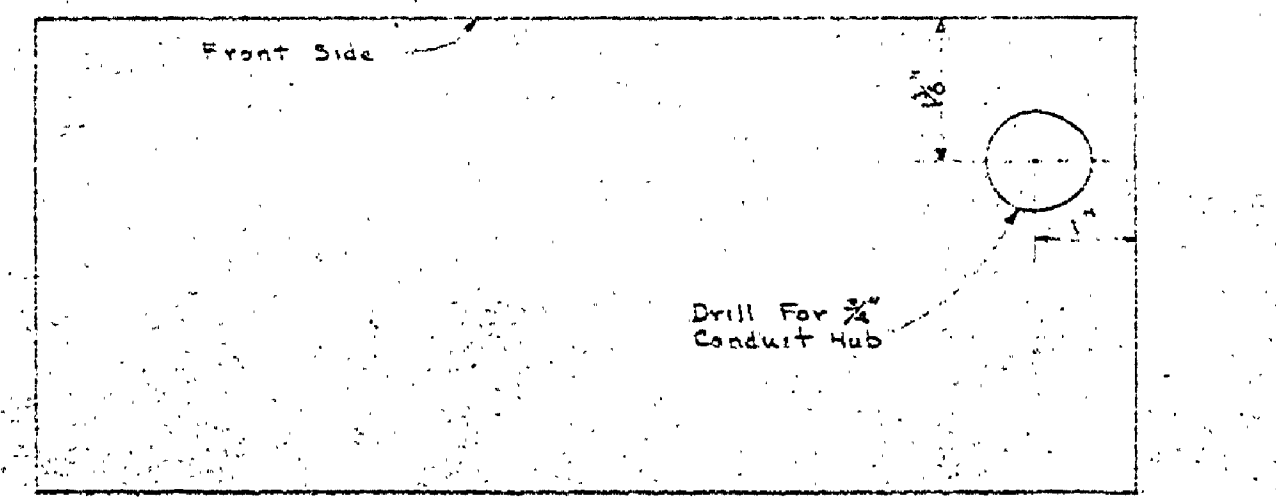
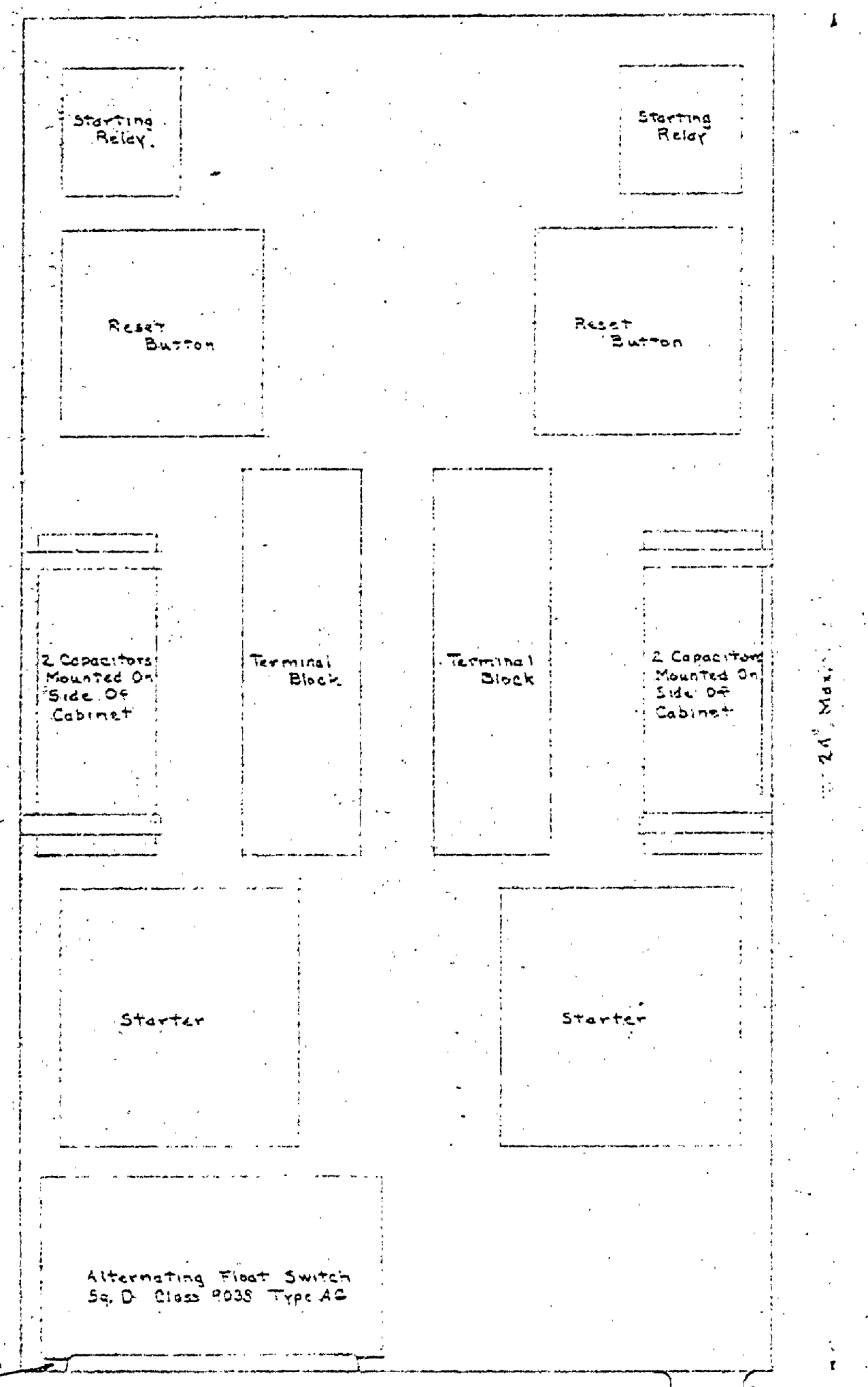
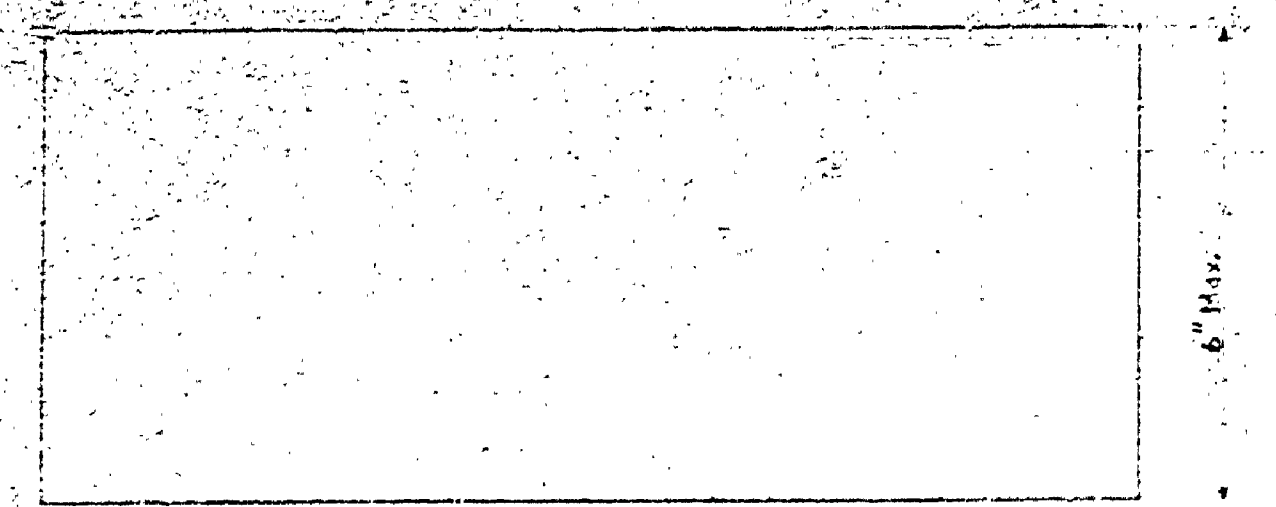


NO.	DATE	BY	REVISIONS
1			4
2			5
3			6

NO.	DATE	BY	APPROVED BY
1	2-22-62		
2	6-7-62		
3	6-27-62		
4	8-16-62		

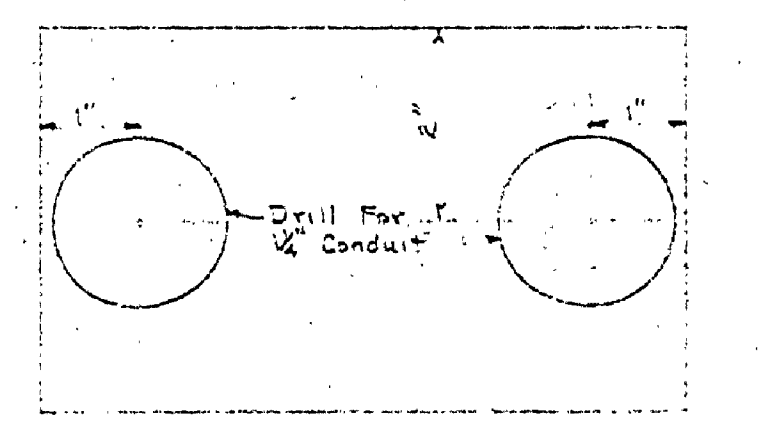
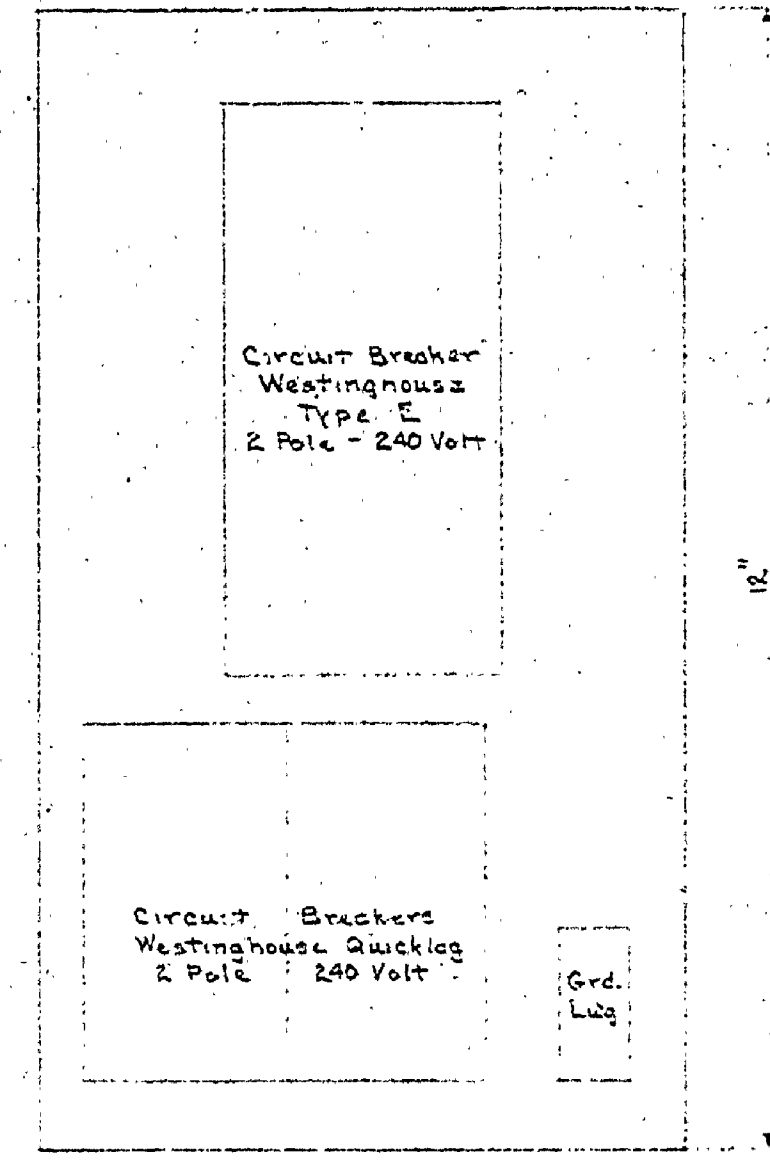
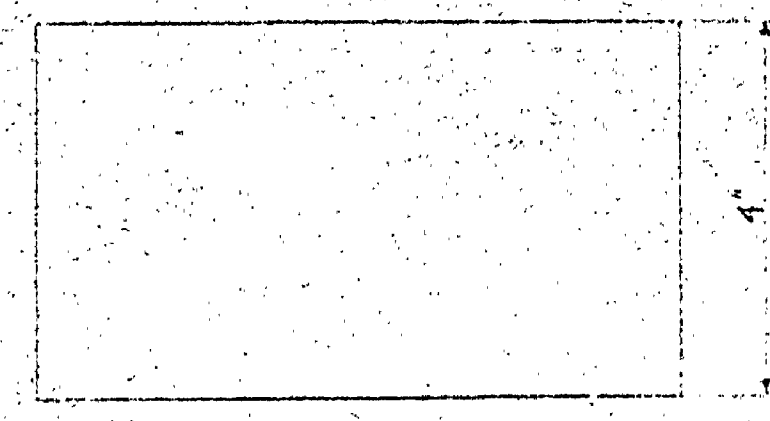
REVIEWED BY SECTIONS	DATE	APPROVED BY
ARCHITECTURAL	2-22-62	
ENGINEERING	6-7-62	
LANDSCAPE	6-27-62	

DATE	APPROVED BY	DATE	APPROVED BY
2-22-62		6-7-62	
6-7-62		6-27-62	
6-27-62		8-16-62	



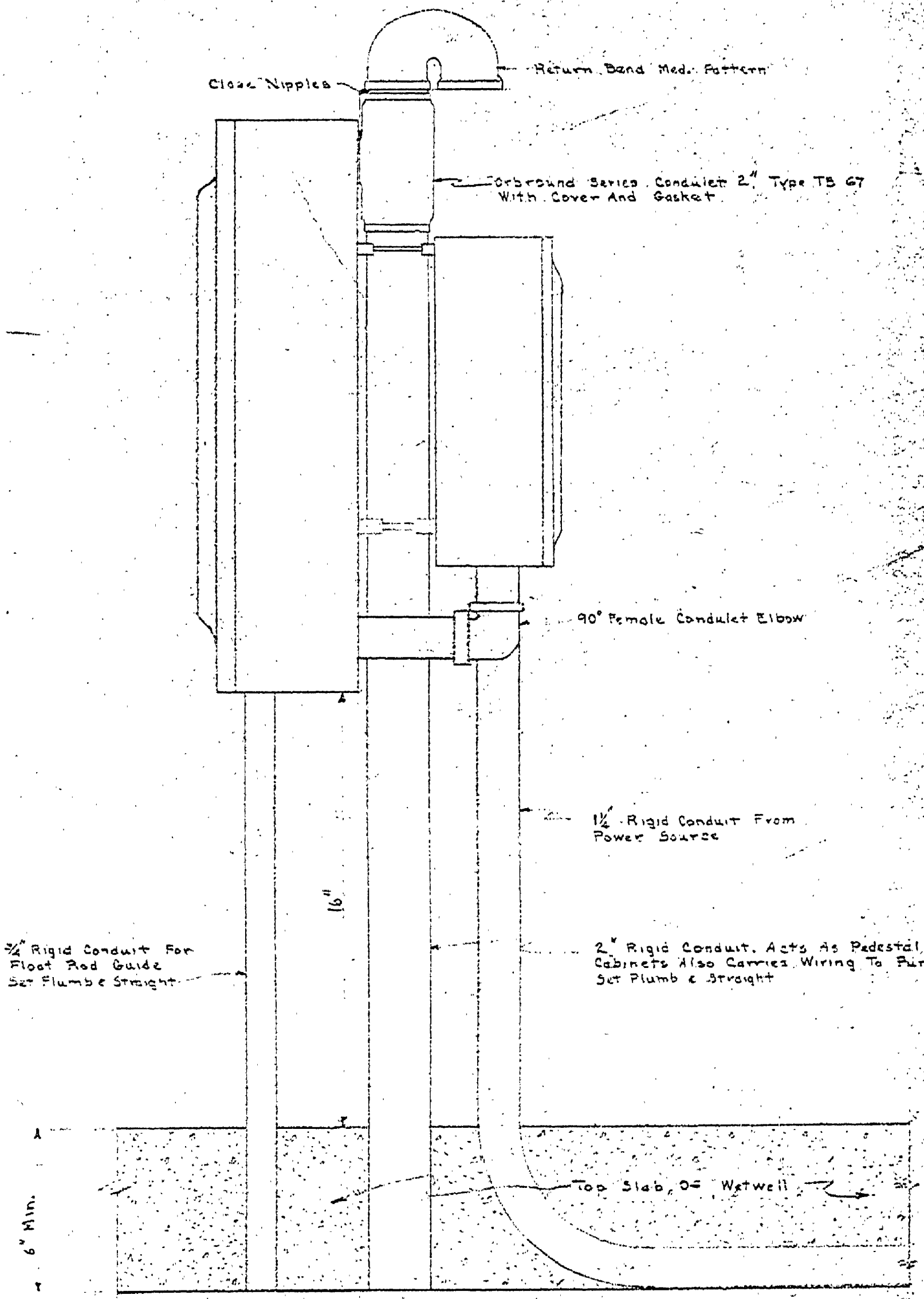
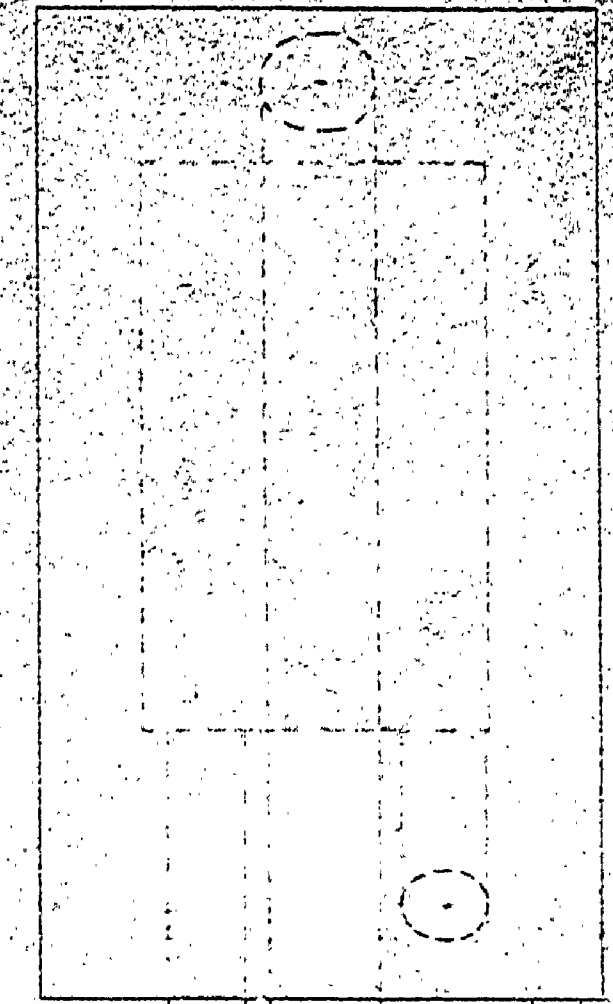
NOTES:
Cabinet is shown here with cover removed. Pumps will have 3 HP Motors.

CONTROL FOR DUAL PUMPS
Half Scale



MAIN DISCONNECT
Half Scale

NOTES:
Do Not Pour Top Slab Of Wet Well Until After Switch Pump Control Pedestal is Assembled and Set in Position in Form For Top Slab. The 2" Pedestal & 2" Pilot Rod Guide May Extend Beyond Bottom Of Top Slab.



SWITCH AND PUMP CONTROL PEDESTAL
Scale 3/4" = 1'-0"