

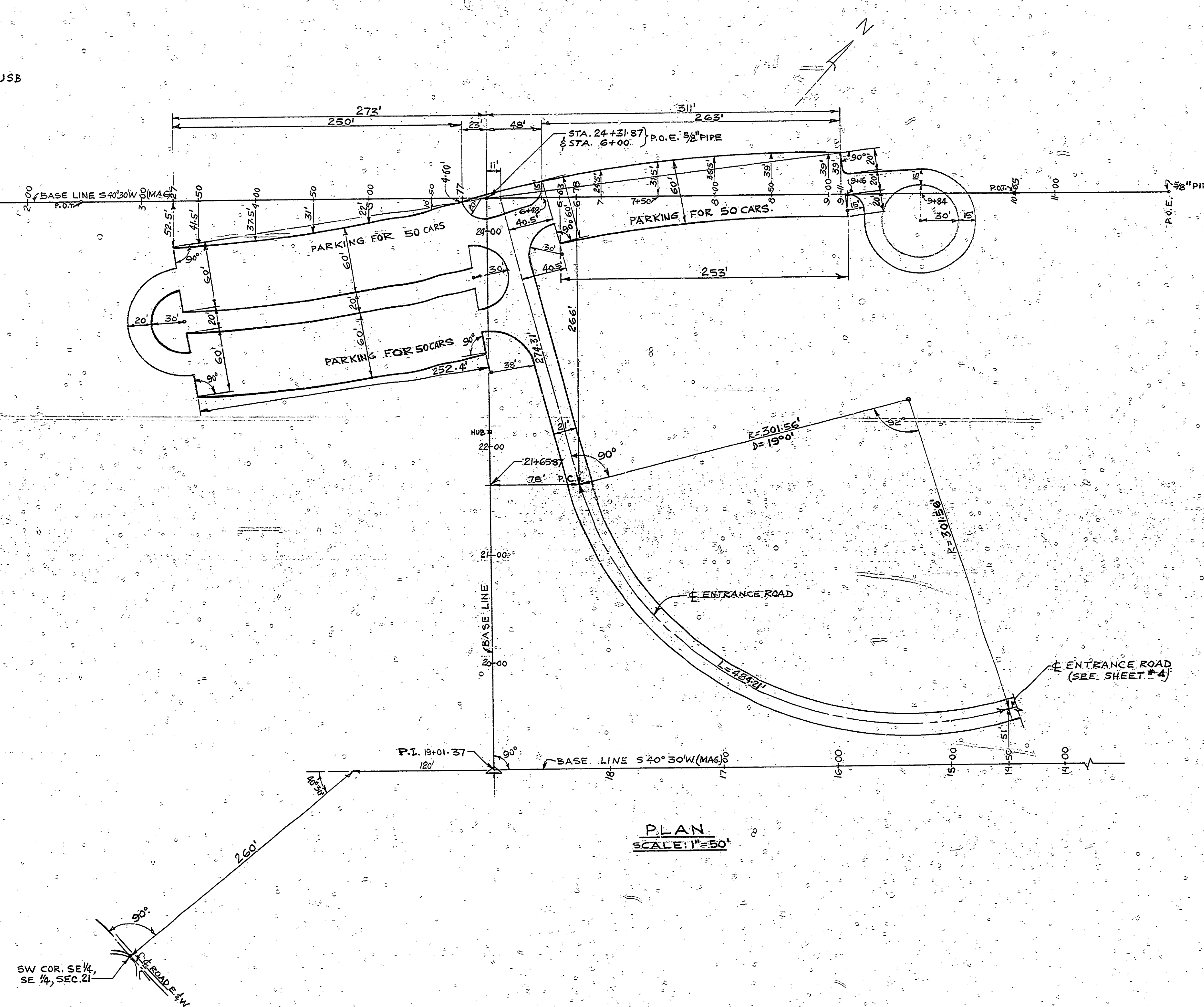
**BENCH MARK DATA**  
 B.M. #13 ELEV. 621.49  
 PK, NUT & TAG IN N.E. CORNER OF 16" W. PINE 25' N  
 OF & ROAD OF MOUTH OF PORTAGE RIVER, ABOUT  
 300' EAST OF RIVER BANK.

B.M. #12 ELEV. 621.40  
 PK, NUT & TAG IN N.E. CORNER OF 12" OAK 3' RT.  
 STA. 6+06 PARKING LOT BASELINE.

B.M. #U.S.B. ELEV. 629.97  
 AT INTERSECTION OF 5 ROADS 200' N.W.  
 OF CANAL COUNTRY STORE BESIDE STOP  
 SIGN SMALL HOLE IN SQUARE STONE SCRIBED USB

**WITNESSES TO SURVEY POINTS**

- P.O.B. @ STA. 0+00 PARKING LOT BASELINE 5/8" PIPE  
 S 82° W, 30.32', 10" R. PINE, SPIKE  
 S 23° E, 88.69', 12" W. PINE, PK, NUT & TAG (B.M. #13)
- P.O.T. 2+46.13 5/8" PIPE  
 N 56° E, 11.60', 11" R. PINE, SPIKE  
 N 41° W, 12.76', 9" R. PINE, SPIKE
- P.O.T. 10+64.87 5/8" PIPE  
 S 10° E, 19.56', 9" OAK, SPIKE.  
 S 28° W, 39.05', 15" R. PINE, SPIKE.
- P.O.E. 11+99.70 5/8" PIPE  
 N 70° W, 38.71', TWIN 2.5" 3" W. BIRCH, SPIKE  
 N 50° E, 76.75', 6" OAK, SPIKE
- P.I. 19+01.37 3/4" PIPE  
 N 87° W, 8.01', 10" R. PINE, SPIKE  
 N 20° E, 9.61', 6" OAK, SPIKE
- P.O.T. 22+13.21 HUB  
 S 39° W, 63.02', 6" & 8" TWIN W. PINE, SPIKE  
 N 68° E, 54.00', 8" R. PINE, SPIKE
- P.O.E. 24+31.87 5/8" PIPE  
 N 61° E, 6.45', 12" OAK, SPIKE (B.M. #12)  
 N 47° W, 24.79', 8" W. BIRCH, SPIKE.



SURVEYED BY D. BISSELL	5-70	DRAWN BY A. PETRACIUS	10-70	NO. DATE BY	REVISIONS	NO. DATE BY	REVISIONS	MICHIGAN DEPARTMENT OF NATURAL RESOURCES	PARKING LOT & ENTRANCE ROAD PLAN AND LAYOUT. SHEET TITLE	MC LAIN STATE PARK AREA OR PARK	PROJECT	PROJECT NO. 24-1050
DESIGNED BY A. PETRACIUS	8-70	CHECKED BY		1.		3.				DAY USE EXTENSION		SHEET 2 OF 8
DATE		DATE		2.		4.						PLAN NO. E-109