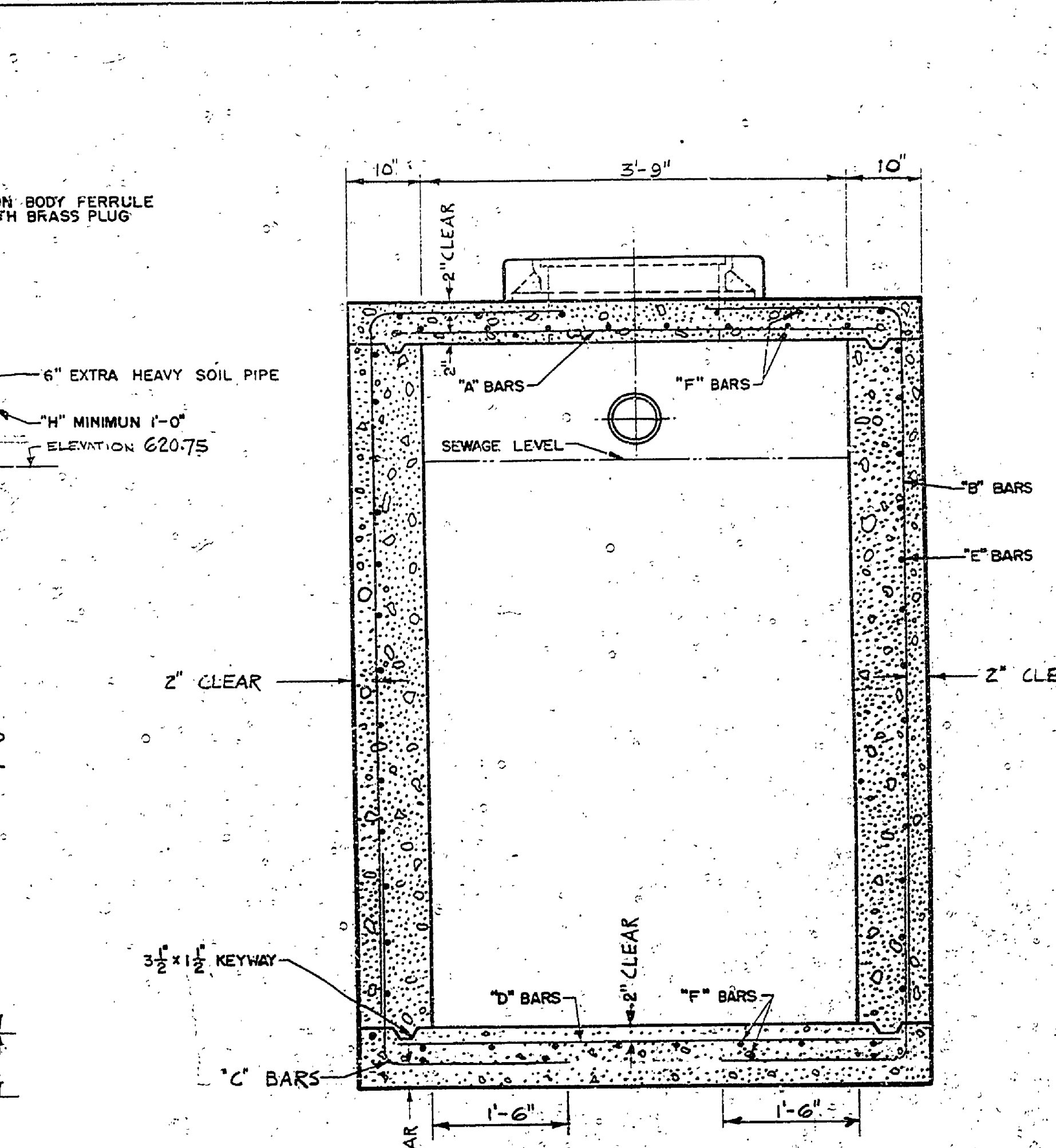
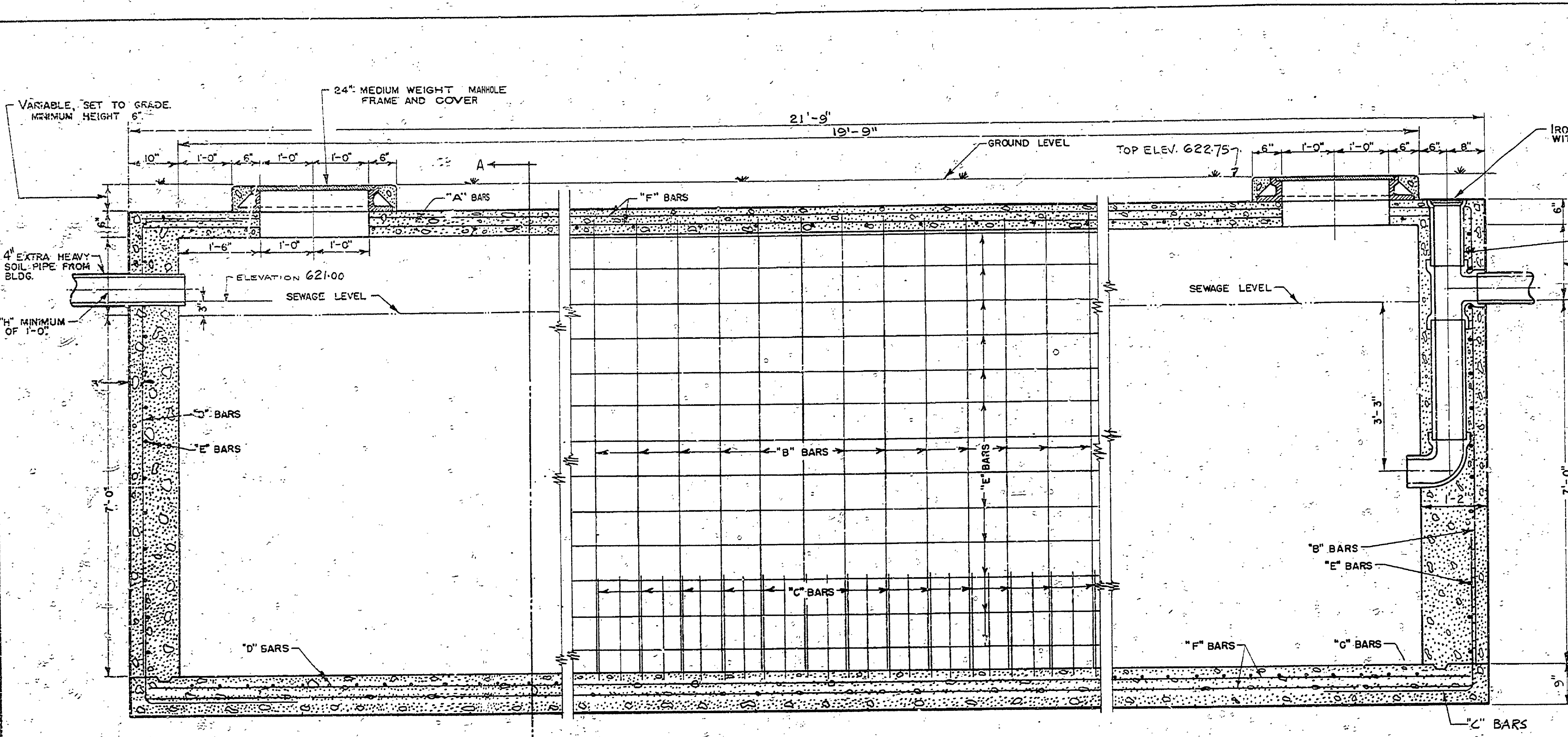
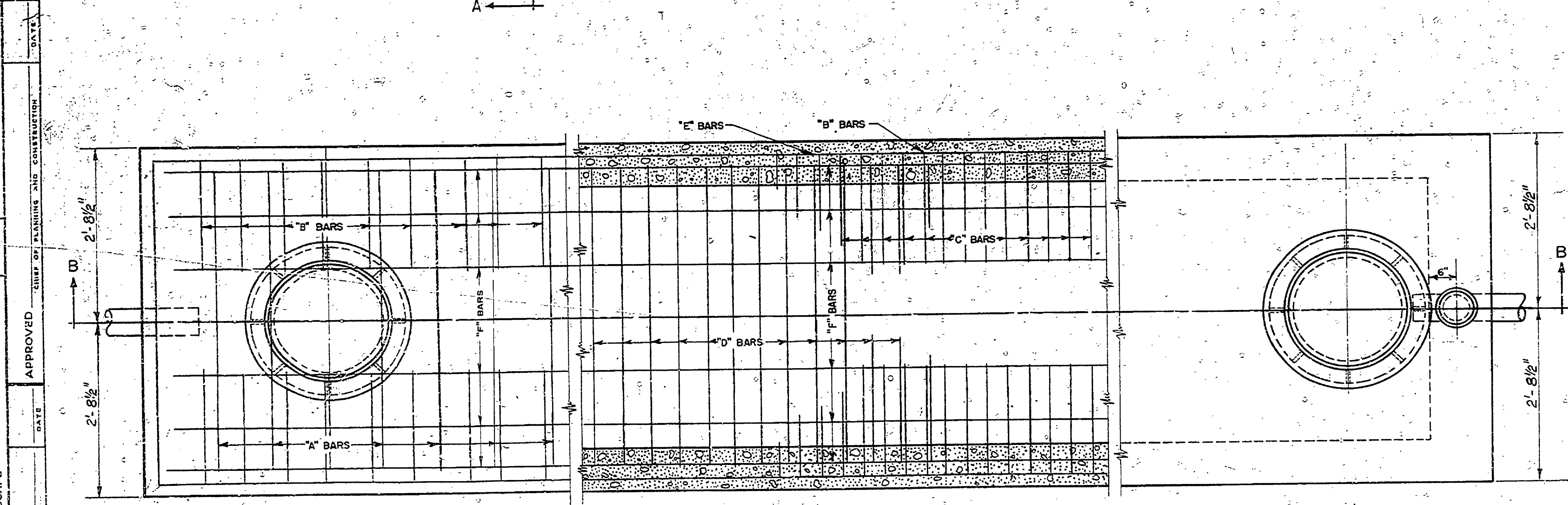


DATE BY	
NO.	DATE BY
1	6/28/56 E.C.B.
2	8/10/56 J.N.
3	
4	
5	
6	



SECTION B-B
SHOWING REINFORCING - SIDES & END WALLS

SECTION A-A
SCALE 3/4" = 1'-0"

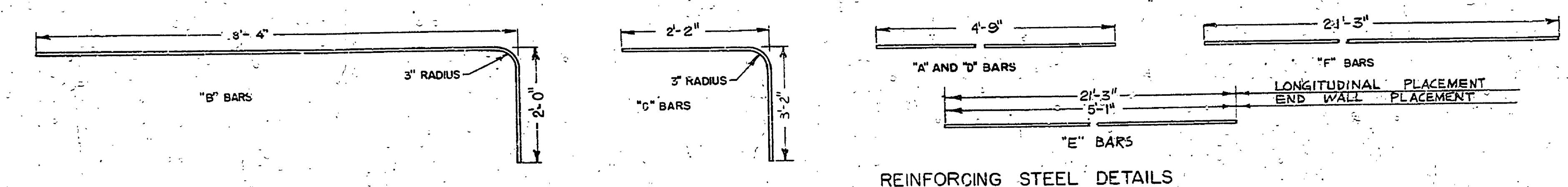


PLAN OF SEPTIC TANK
SHOWING REINFORCING - TOP SLAB
SHOWING REINFORCING - BOTTOM SLAB

LENGTH	WIDTH	CAR. IN. GALLS.	GALLS. PER CUB. FT.	"A" BARS	"B" BARS	"C" BARS	"D" BARS	"E" BARS	"F" BARS
15'-0" TO 16'-0"	3'-0"	2360 TO 3230	157.1	1/2 @ 12" O.C.	1/2 @ 12" O.C.	1/2 @ 12" O.C.	1/2 @ 12" O.C.	1/2 @ 12" O.C.	1/2 @ 12" O.C.
16'-3" TO 16'-6"	3'-3"	2760 TO 3380	170.2	1/2 @ 12" O.C.	1/2 @ 12" O.C.	1/2 @ 12" O.C.	1/2 @ 12" O.C.	1/2 @ 12" O.C.	1/2 @ 12" O.C.
17'-6" TO 21'-0"	3'-6"	3200 TO 3850	183.3	1/2 @ 12" O.C.	1/2 @ 12" O.C.	1/2 @ 12" O.C.	1/2 @ 12" O.C.	1/2 @ 12" O.C.	1/2 @ 12" O.C.
16'-9" TO 22'-6"	3'-9"	3670 TO 4440	196.4	1/2 @ 12" O.C.	1/2 @ 12" O.C.	1/2 @ 12" O.C.	1/2 @ 12" O.C.	1/2 @ 12" O.C.	1/2 @ 12" O.C.
20'-0" TO 24'-0"	4'-0"	4190 TO 5020	209.4	1/2 @ 12" O.C.	1/2 @ 12" O.C.	1/2 @ 12" O.C.	1/2 @ 12" O.C.	1/2 @ 12" O.C.	1/2 @ 12" O.C.
21'-3" TO 25'-6"	4'-3"	4730 TO 5620	222.5	1/2 @ 12" O.C.	1/2 @ 12" O.C.	1/2 @ 12" O.C.	1/2 @ 12" O.C.	1/2 @ 12" O.C.	1/2 @ 12" O.C.
22'-6" TO 27'-0"	4'-6"	5300 TO 6360	235.9	1/2 @ 12" O.C.	1/2 @ 12" O.C.	1/2 @ 12" O.C.	1/2 @ 12" O.C.	1/2 @ 12" O.C.	1/2 @ 12" O.C.
25'-0" TO 30'-0"	5'-0"	6560 TO 7850	282.0	1/2 @ 12" O.C.	1/2 @ 12" O.C.	1/2 @ 12" O.C.	1/2 @ 12" O.C.	1/2 @ 12" O.C.	1/2 @ 12" O.C.
27'-6" TO 33'-0"	5'-3"	7920 TO 9500	288.0	1/2 @ 12" O.C.	1/2 @ 12" O.C.	1/2 @ 12" O.C.	1/2 @ 12" O.C.	1/2 @ 12" O.C.	1/2 @ 12" O.C.
30'-0" TO 36'-0"	6'-0"	9400 TO 11300	314.2	1/2 @ 12" O.C.	1/2 @ 12" O.C.	1/2 @ 12" O.C.	1/2 @ 12" O.C.	1/2 @ 12" O.C.	1/2 @ 12" O.C.
32'-6" TO 39'-0"	6'-6"	11,050 TO 13300	340.4	1/2 @ 12" O.C.	1/2 @ 12" O.C.	1/2 @ 12" O.C.	1/2 @ 12" O.C.	1/2 @ 12" O.C.	1/2 @ 12" O.C.
35'-0" TO 38'-0"	7'-0"	12,600 TO 15,380	366.7	1/2 @ 12" O.C.	1/2 @ 12" O.C.	1/2 @ 12" O.C.	1/2 @ 12" O.C.	1/2 @ 12" O.C.	1/2 @ 12" O.C.
37'-6" TO 45'-0"	7'-6"	14,700 TO 17,610	392.7	1/2 @ 12" O.C.	1/2 @ 12" O.C.	1/2 @ 12" O.C.	1/2 @ 12" O.C.	1/2 @ 12" O.C.	1/2 @ 12" O.C.
42'-0" TO 48'-0"	8'-0"	16,750 TO 20,050	418.9	1/2 @ 12" O.C.	1/2 @ 12" O.C.	1/2 @ 12" O.C.	1/2 @ 12" O.C.	1/2 @ 12" O.C.	1/2 @ 12" O.C.

CONCRETE SPECIFICATIONS
 THE CONCRETE MIX SHALL CONSIST OF ONE SACK OF CEMENT, 2.25 CU. FT. OF FINE AGGREGATE, 4.0 CU. FT. OF COARSE AGGREGATE AND ENOUGH WATER TO MAKE A WORKABLE MIX, BUT NOT TO EXCEED SIX GALLONS, OR ONE SACK OF CEMENT, 3.0 CU. FT. OF BANK RUN GRAVEL AND ENOUGH WATER TO MAKE A WORKABLE MIX BUT NOT TO EXCEED SIX GALLONS.
 THE AGGREGATE SHALL BE CLEAN, FREE FROM SILT AND CLAY, AND SHALL PASS A #10 SCREEN. TIME OF MIXING SHALL BE NOT LESS THAN 12 MINUTES.
 THE CONCRETE SHALL BE PLACED IN THE FORMS IN HORIZONTAL LAYERS, NOT OVER 2" THICK AND THOROUGHLY SPADED ALONG THE FORMS AND AROUND THE REINFORCING STEEL.

FORM SPECIFICATIONS
 SPACING OF STUDDING-USE 2" SHEATHING 22" O.C.
 SPACING OF WALES-USE 2"x4" STUDDING 30" O.C.
 SPACING OF TIES-USE DOUBLE 2"x4" WALES 30" O.C. TIE AT EVERY STUD.
 SHORING SHALL BE 4"x4" OR DOUBLE 2"x4"
 SPLIKES IN LONGITUDINAL (E+F) BARS SHALL BE LAPPED 1'-0"
 REINFORCING STEEL TO BE INTERMEDIATE GRADE
 CONCRETE TO HAVE A STRENGTH AT 28 DAYS OF 3000 P.S.I.



REINFORCING STEEL DETAILS