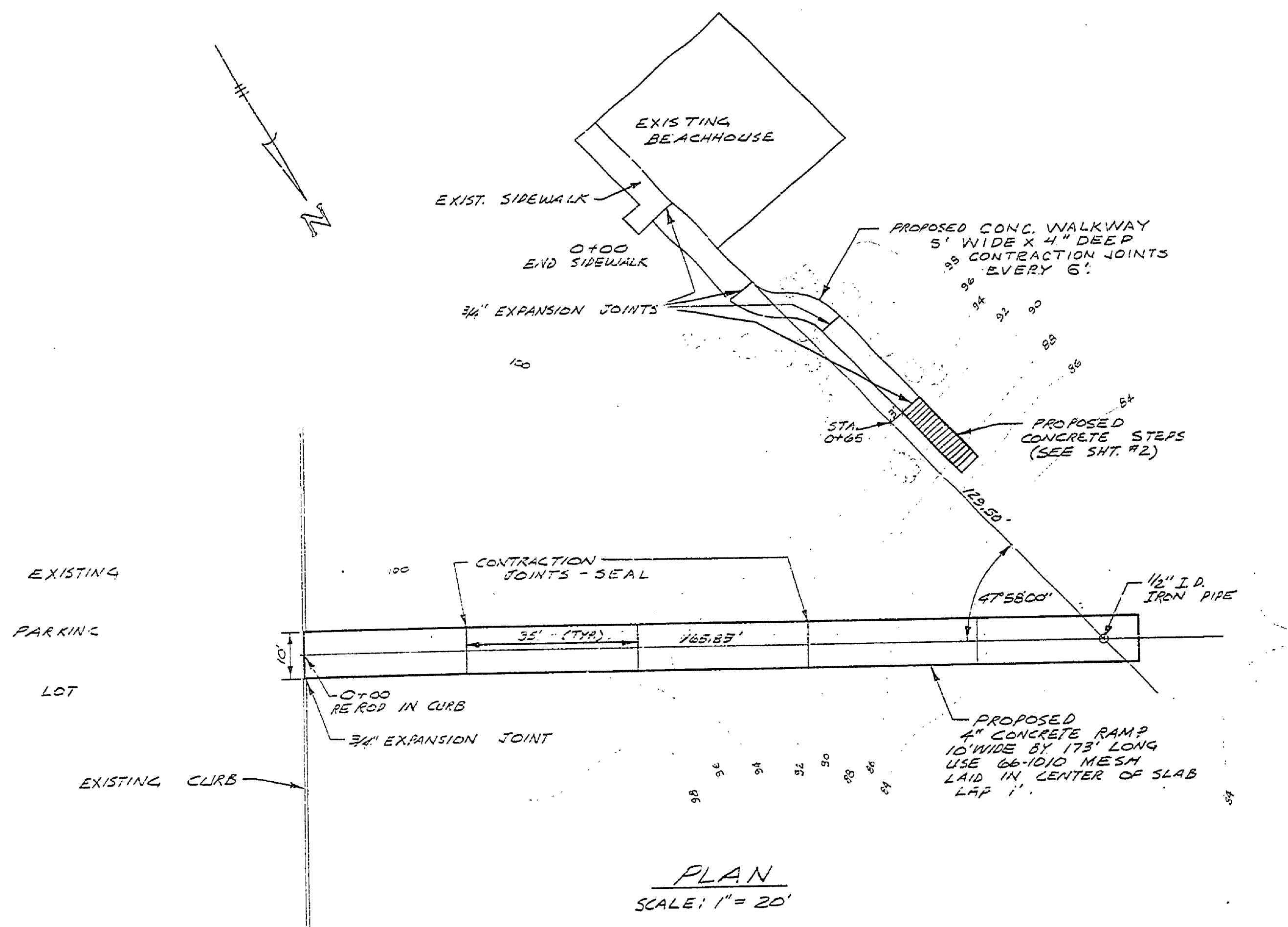


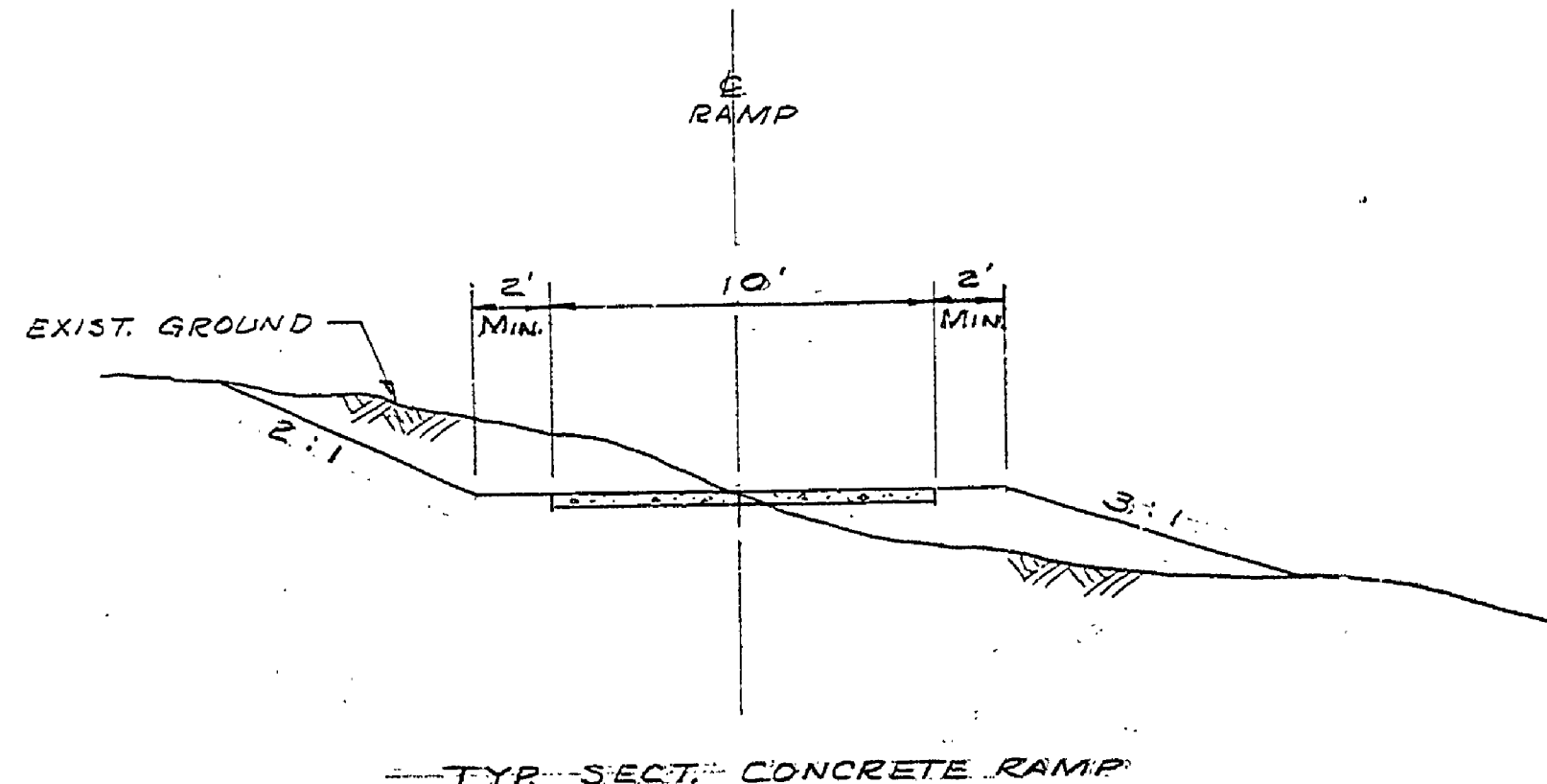
MCLAIN STATE PARK

CONSTRUCTION PLANS FOR BEACHHOUSE RAMP & STEPS

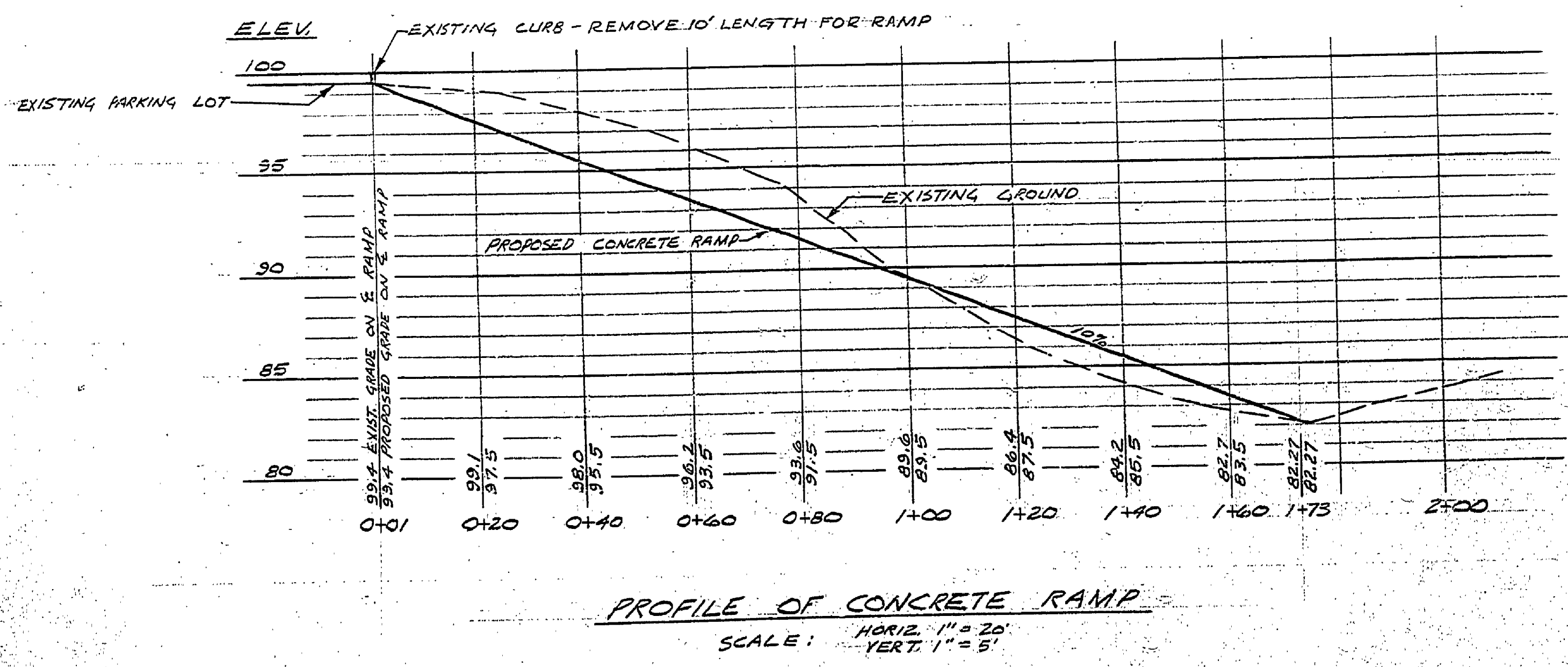
PROJECT NO. 24-1524



NOTE: EXPANSION JOINTS TO BE FORMED WITH 3/4\"/>



NOTE: USE 2:1 SIDE SLOPES IN CUT AREAS AND 3:1 SIDE SLOPES IN FILL AREA



QUANTITIES

- CONCRETE**
 - RAMP = 32 CU. YDS.
 - STEPS = 3 CU. YDS.
 - WALK = 5 CU. YDS.
- STEEL**
 - RAMP = 360 POUNDS
 - STEPS = 145 POUNDS
- 1/2" PIPE RAILING**
 - STEPS = TOTAL LENGTH 36'-10"
- EXCAVATION**
 - RAMP:
 - CUT = 322 CU. YDS.
 - FILL = 60 CU. YDS.

PROFILE OF CONCRETE RAMP
SCALE: HORIZ. 1" = 20'
VERT. 1" = 5'

BUILDING COMMITTEE APPROVAL	
BY: _____	DATE _____
RECOMMENDED FOR APPROVAL: <i>[Signature]</i>	DATE: 1-22-74
RECOMMENDED FOR APPROVAL: <i>[Signature]</i>	DATE: _____
DIVISION/REGION APPROVAL	
BY: <i>[Signature]</i>	DATE: 2/1/74
APPROVED: <i>[Signature]</i>	
DATE: 2-4-74	
PROJECT NO. 24-1524	AREA OR PARK: MCLAIN STATE PARK
SHEET 1 OF 2	PLAN NO. E-112

DESIGNED BY: R. MENNILL	CHECKED BY: _____	DATE: _____	NO. 1	DATE	BY	REVISIONS	NO. 2	DATE	BY	REVISIONS	NO. 3	DATE	BY	REVISIONS	NO. 4	DATE	BY	REVISIONS	
MICHIGAN DEPARTMENT OF NATURAL RESOURCES										CONCRETE RAMP PLAN & PROFILE					SHEET TITLE				