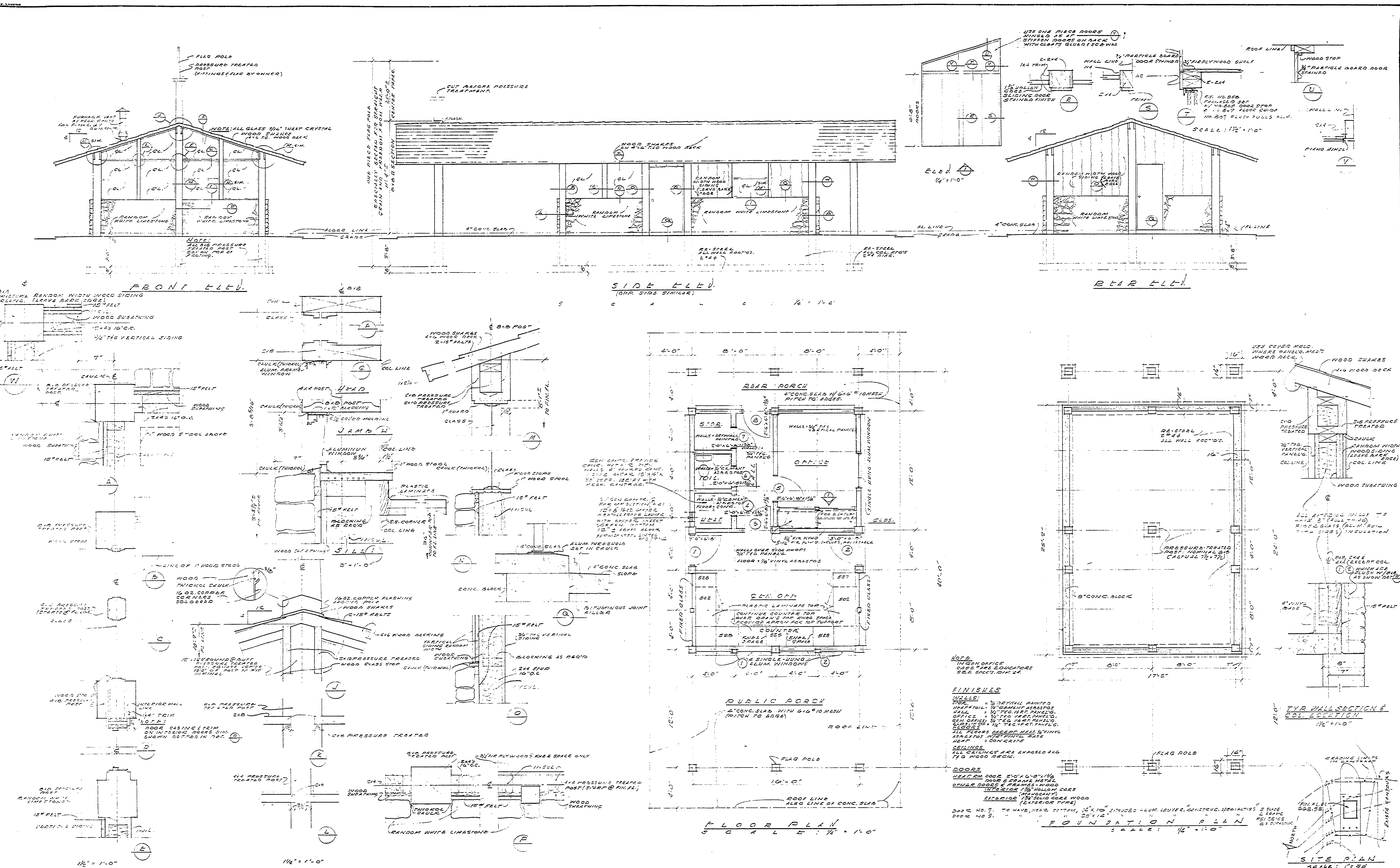


DESIGNED BY	JACK A. DREW ASSOC., INC.
DRAWN BY	LANDSCAPE ARCHITECTS
CHECKED BY	LANSING, MICHIGAN
REVIEWED	ARCHITECTURAL ENGINEERING LANDSCAPE
DATE	
APPROVED	
DATE	
NO.	1
DATE	
NO.	2
DATE	
NO.	3
DATE	
NO.	4
DATE	
NO.	5
DATE	
NO.	6
DATE	

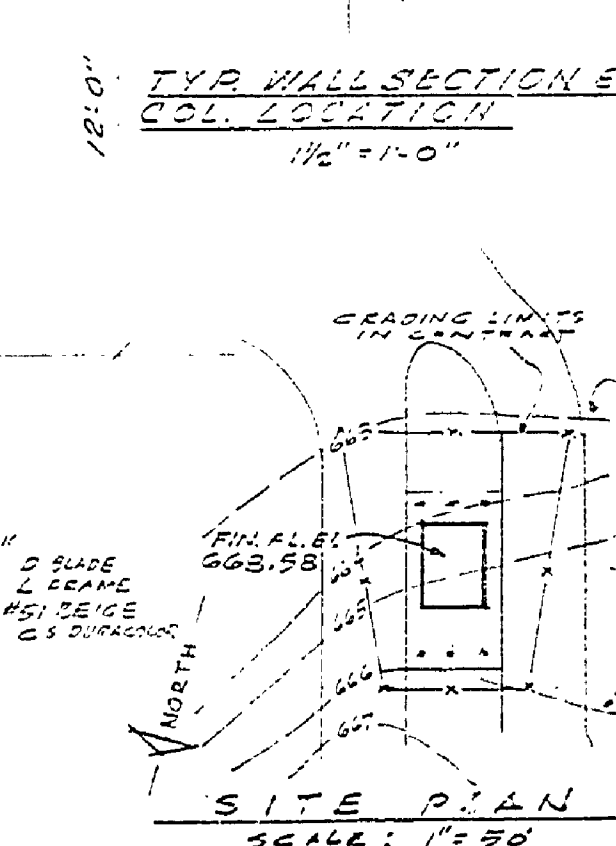


**FINISHES**

**WALLS:**  
 INTERIOR: 1/2\"/>

**DOORS:**  
 ALL DOORS: 2 1/2\"/>

**CEILING:**  
 ALL CEILING ARE EXPOSED 1/2\"/>



DESIGNED BY	JACK A. DREW ASSOC., INC.	LAITALA & NUCHESTERLEIN ASSOC., INC.	BOLTON & HELVESTON ENGINEERS	INDIAN LAKE STATE PARK	SCALE	MICHIGAN DEPARTMENT OF CONSERVATION	ENTRANCE BLDG. (GATE HOUSE)	SHEET NO. 2	PLAN NO. 1056
DRAWN BY	LANDSCAPE ARCHITECTS	ARCHITECTS	ENGINEERS	WEST SHORE SECTION	AS INDICATED	PARKS AND RECREATION DIVISION	ARCHITECTURAL	OF 6	
CHECKED BY	LANSING, MICHIGAN	LANSING, MICHIGAN	LANSING, MICHIGAN						

A-104