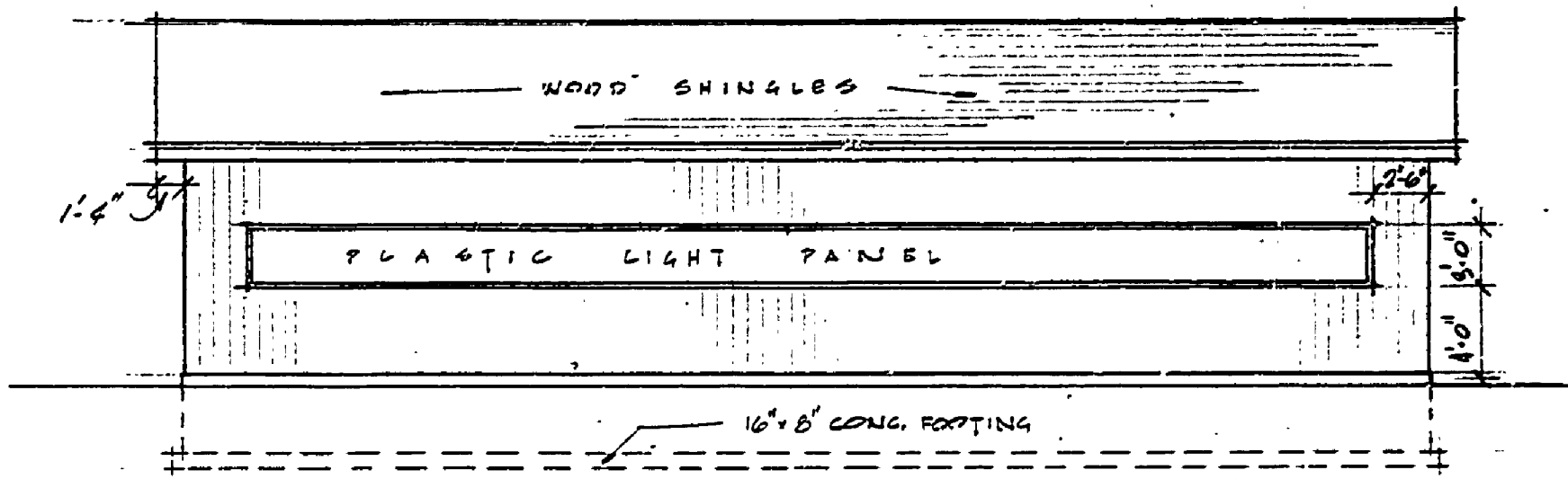
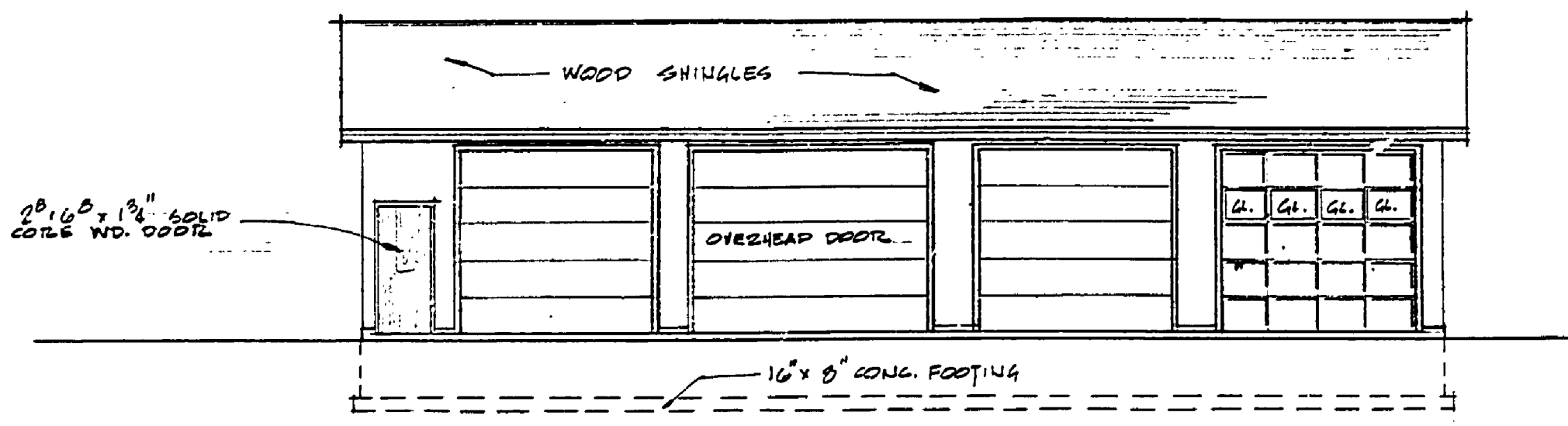


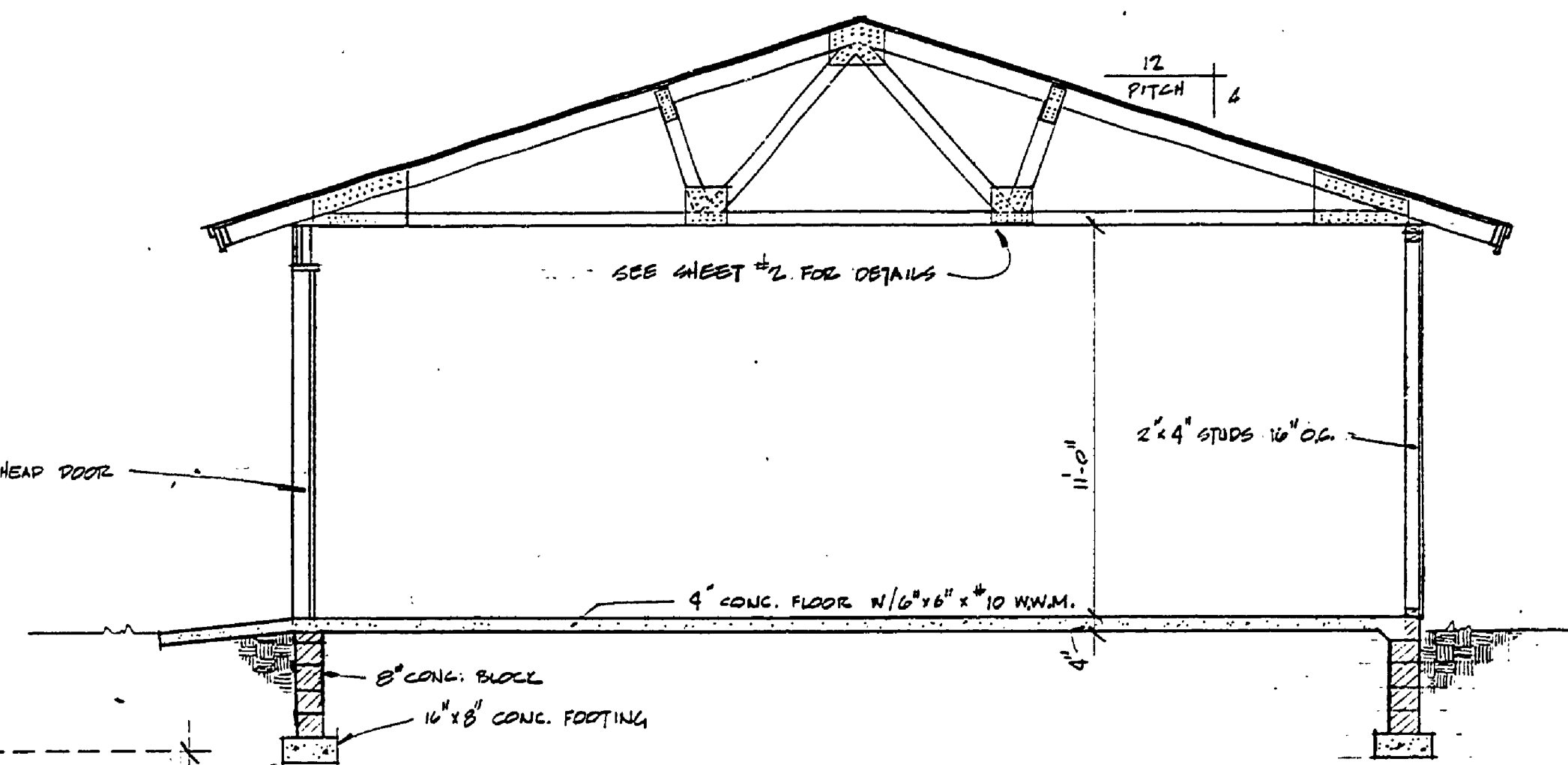
EAST ELEVATION (WEST ELEV. OPP. HAND)
SCALE: 1/8" = 1'-0"



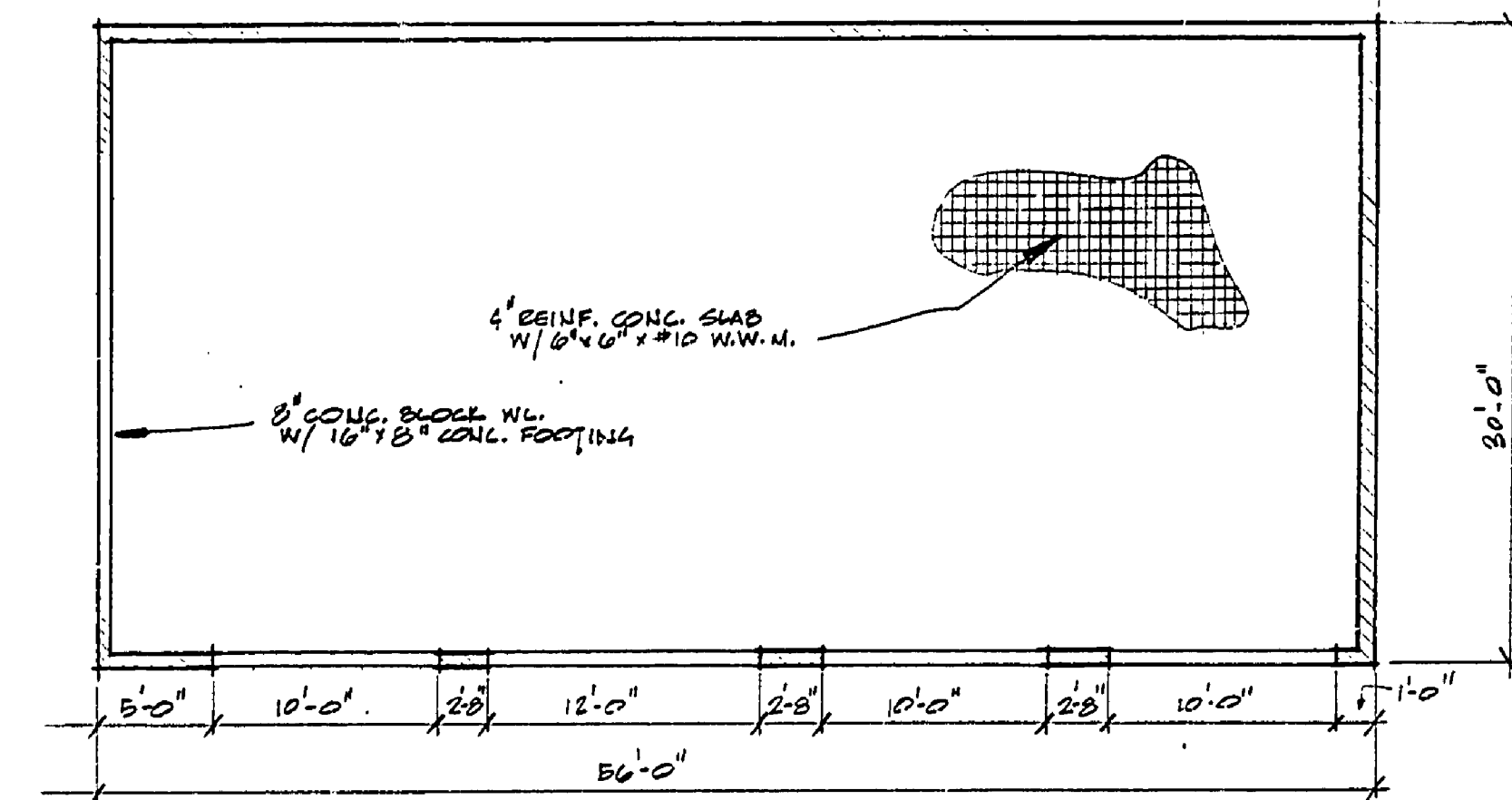
NORTH ELEVATION
SCALE: 1/8" = 1'-0"



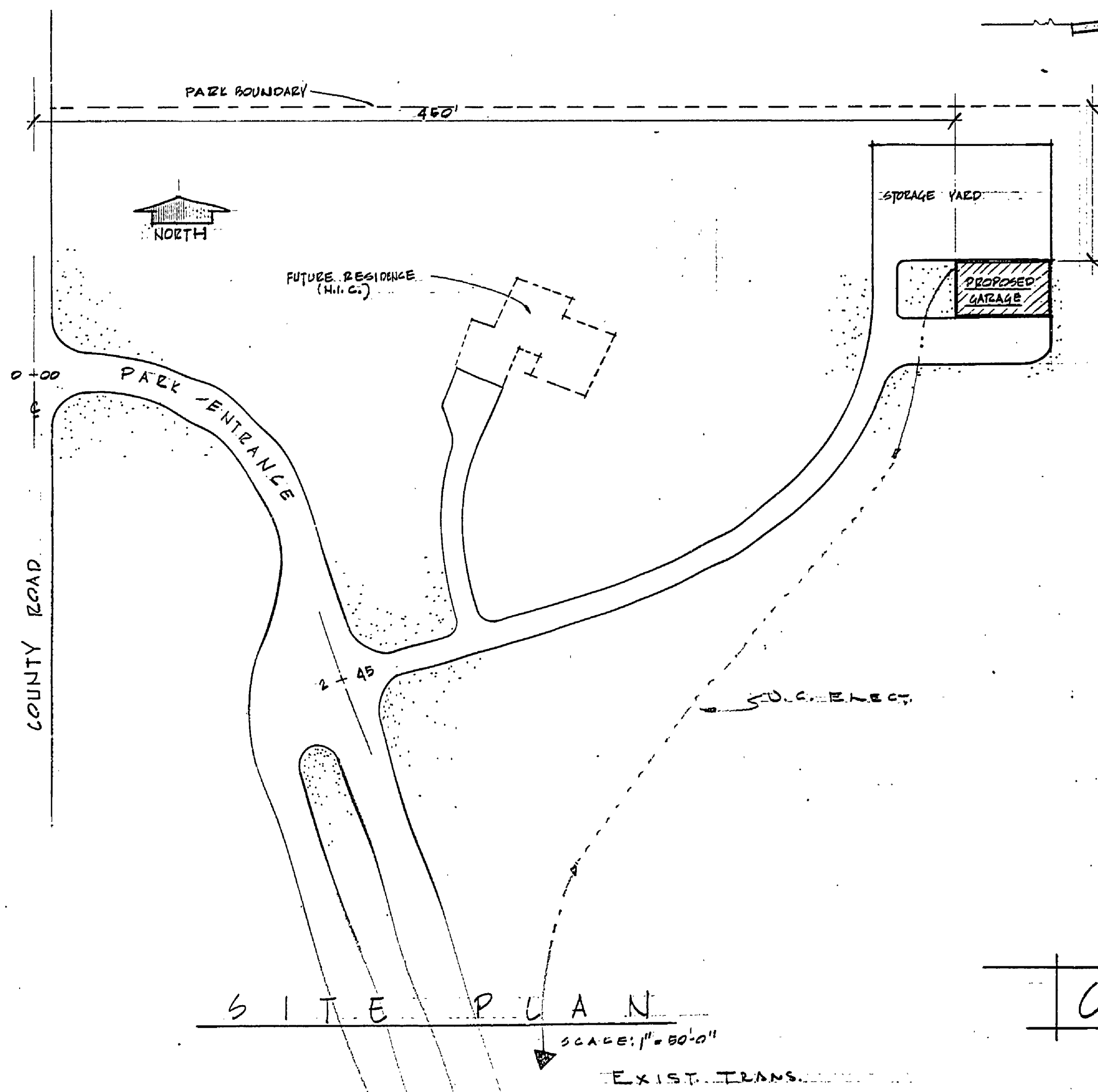
SOUTH ELEVATION
SCALE: 1/8" = 1'-0"



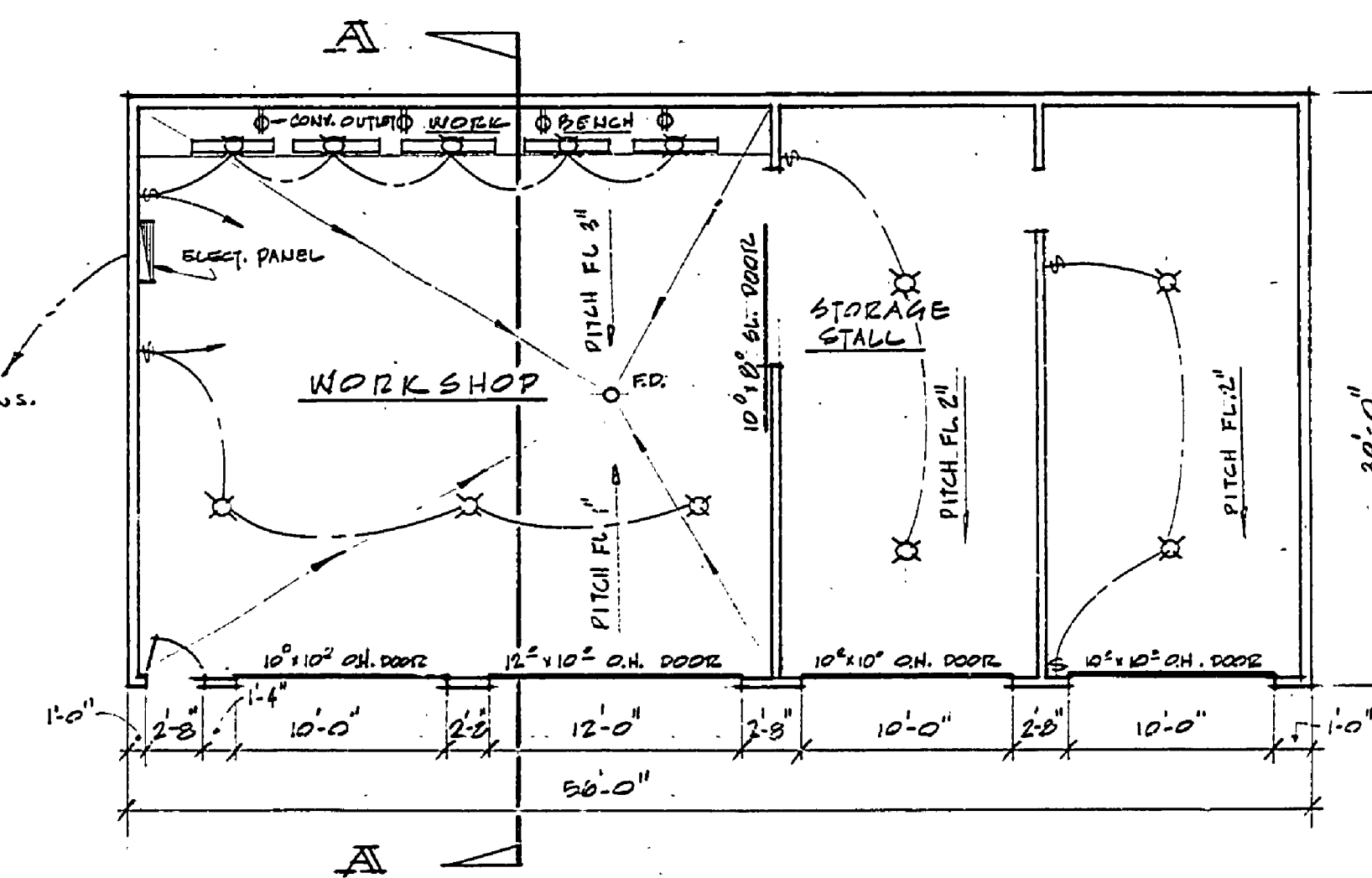
SECTION A-A
SCALE: 1/4" = 1'-0"



FOUNDATION PLAN
SCALE: 1/8" = 1'-0"



SITE PLAN
SCALE: 1" = 80'-0"



FLOOR PLAN
SCALE: 1/8" = 1'-0"

GARAGE AND WORKSHOP

INDIAN LAKE STATE PARK - WEST

BUILDING COMMITTEE APPROVAL	
BY: <i>H.C. MacLean</i>	DATE: 6-12-68
RECOMMENDED FOR APPROVAL: <i>W.N. G.</i>	DATE: 5-1-68
RECOMMENDED FOR APPROVAL: <i>E.P. Kelly</i>	DATE: 5-27-68
SECTION APPROVAL	
BY: <i>Robert O. Dohy</i>	DATE: 6-6-68
ENGINEERING SECTION	
APPROVED: <i>H.C. MacLean</i>	DATE: 6-12-68
PLANS, ELEVATIONS, SITE PLAN	
SHEET 1 OF 2	PLAN NO. A-105

SURVEYED BY	DRAWN BY	NO.	DATE	BY	REVISIONS	NO.	DATE	BY	REVISIONS
	<i>J.E.</i>	1.	4-68			3.			
DESIGNED BY	CHECKED BY	2.				4.			

MICHIGAN DEPARTMENT OF CONSERVATION	GARAGE & WORKSHOP INDIAN LAKE STATE PARK - WEST	SHEET NO. 1 OF 2	FOR PROJECT NO. Pa 288-1004-300-003-C1
-------------------------------------	--	------------------	--