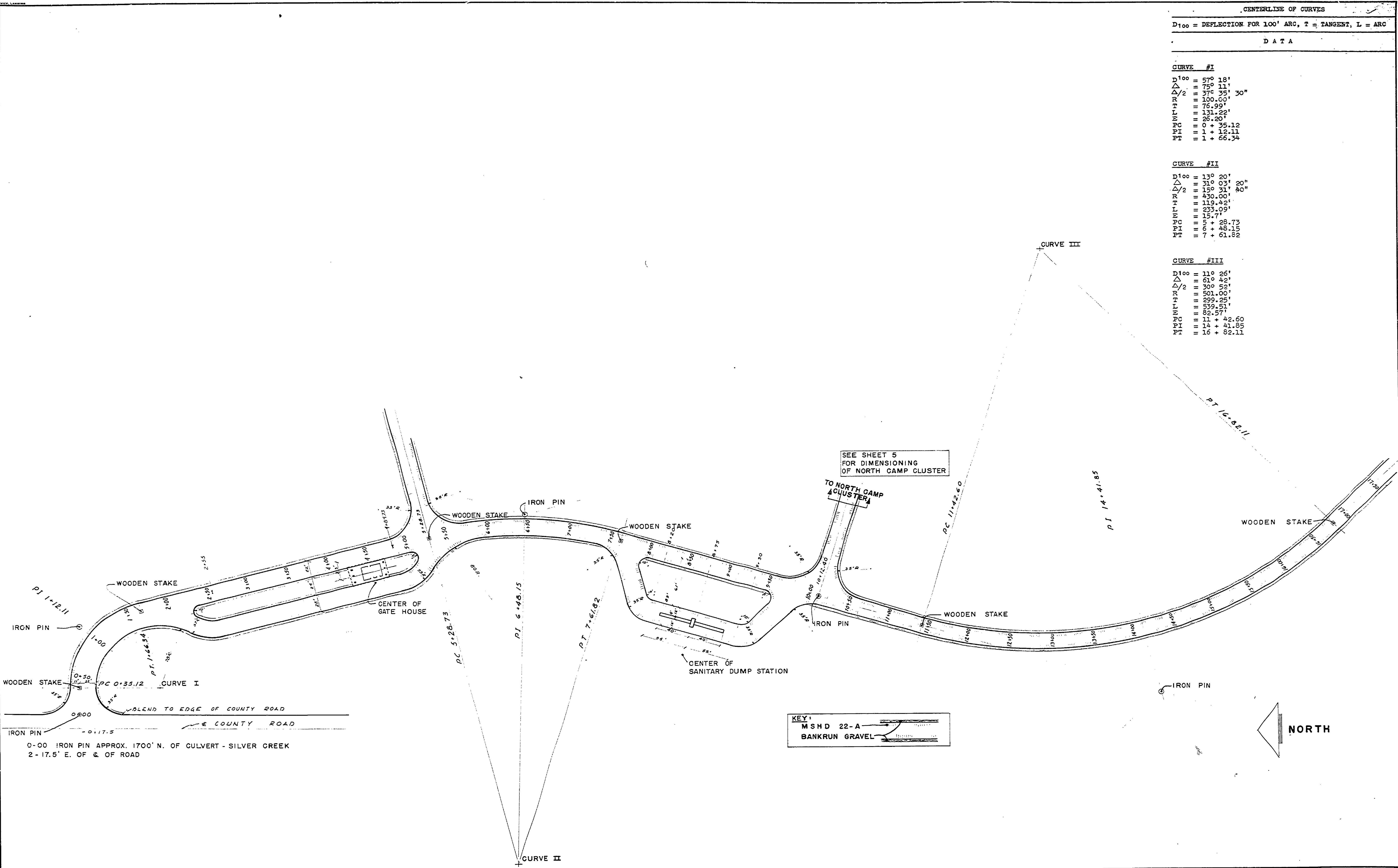


DESIGNED BY	DATE	REVIEWED	DATE	APPROVED	DATE	NO.	DATE	BY	REVISIONS
JACK A. DREW ASSOC., INC.		ARCHITECTURAL				1			4
LANDSCAPE ARCHITECTS		ENGINEERING				2			5
LANSING, MICHIGAN		LANDSCAPE				3			6



CENTERLINE OF CURVES	
D ₁₀₀ = DEFLECTION FOR 100' ARC, T = TANGENT, L = ARC	
DATA	
CURVE #I	
D ₁₀₀	= 57° 18'
Δ	= 75° 11'
Δ/2	= 37° 35' 30"
R	= 100.00'
T	= 76.99'
L	= 131.22'
PC	= 26.20'
PT	= 0 + 35.12
PI	= 1 + 12.11
PT	= 1 + 66.34
CURVE #II	
D ₁₀₀	= 13° 20'
Δ	= 31° 03' 20"
Δ/2	= 15° 31' 40"
R	= 430.00'
T	= 119.42'
L	= 233.09'
E	= 15.7'
PC	= 5 + 28.73
PT	= 6 + 48.15
PI	= 7 + 61.82
CURVE #III	
D ₁₀₀	= 11° 26'
Δ	= 61° 42'
Δ/2	= 30° 51'
R	= 501.00'
T	= 299.25'
L	= 539.51'
E	= 82.57'
PC	= 11 + 42.60
PT	= 14 + 41.85
PI	= 16 + 82.11

DESIGNED BY JACK A. DREW ASSOC., INC. LANDSCAPE ARCHITECTS LANSING, MICHIGAN	DATE	REVIEWED BY ARCHITECTURAL ENGINEERING LANDSCAPE	DATE	APPROVED	DATE	NO.	DATE	BY	REVISIONS
LAITALA & NUECHTERLEIN ASSOC., INC. ARCHITECTS LANSING, MICHIGAN		BOLTON & HELVESTON ENGINEERS CONSULTING ENGINEERS LANSING, MICHIGAN							
INDIAN LAKE STATE PARK WEST SHORE SECTION					SCALE 1" = 50' - 0"		MICHIGAN DEPARTMENT OF CONSERVATION PARKS AND RECREATION DIVISION		DIMENSION PLAN MAIN PARK DRIVE
								SHEET NO. 3 OF 24	PLAN NO. 1056