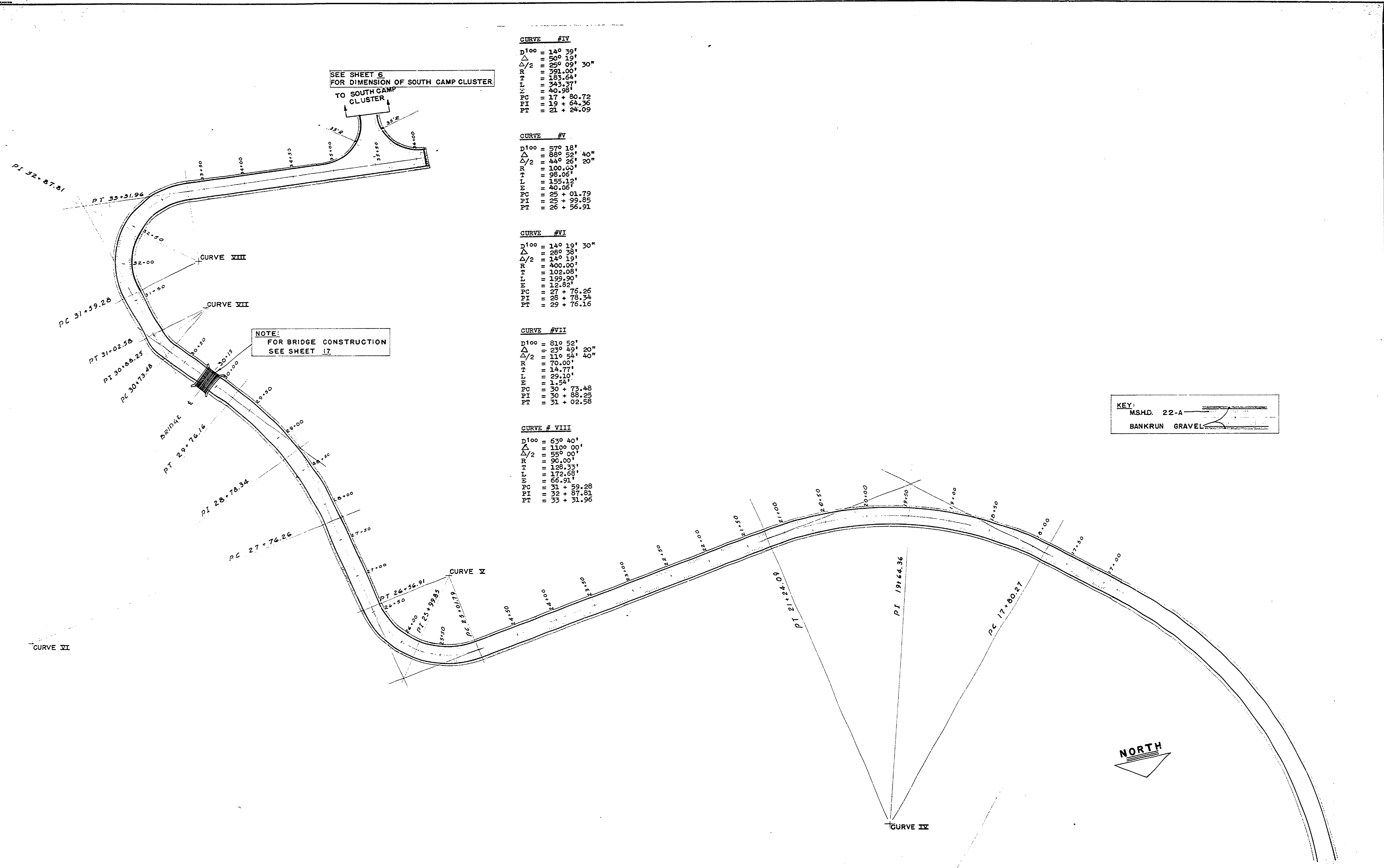


DESIGNED BY	DRAWN BY	CHECKED BY	DATE	REVIEWED	APPROVED	DATE	NO.	DATE	BY	REVISIONS
JACK A. DREW ASSOC., INC.	LANDSCAPE ARCHITECTS	LANSING, MICHIGAN		ARCHITECTURAL			1			4
LAITALA & NUCHESTERLEIN ASSOC., INC.	ARCHITECTS	LANSING, MICHIGAN		ENGINEERING			2			5
BOLTON & HELVESTON ENGINEERS CONSULTING	ENGINEERS	LANSING, MICHIGAN		LANDSCAPE			3			6



**CURVE #IV**  
 $D_{100} = 140.39'$   
 $\Delta = 50^{\circ} 19' 30''$   
 $\Delta/2 = 25^{\circ} 09' 30''$   
 $R = 791.00'$   
 $T = 133.64'$   
 $L = 343.37'$   
 $E = 40.98'$   
 $PC = 17 + 80.72$   
 $PI = 19 + 64.76$   
 $PT = 21 + 24.09$

**CURVE #V**  
 $D_{100} = 570.18'$   
 $\Delta = 88^{\circ} 52' 40''$   
 $\Delta/2 = 44^{\circ} 26' 20''$   
 $R = 100.00'$   
 $T = 98.06'$   
 $L = 155.12'$   
 $E = 40.06'$   
 $PC = 25 + 01.79$   
 $PI = 25 + 99.85$   
 $PT = 26 + 56.91$

**CURVE #VI**  
 $D_{100} = 140.19' 30''$   
 $\Delta = 28^{\circ} 38' 10''$   
 $\Delta/2 = 14^{\circ} 19' 05''$   
 $R = 400.00'$   
 $T = 102.08'$   
 $L = 199.90'$   
 $E = 12.82'$   
 $PC = 27 + 76.26$   
 $PI = 28 + 76.34$   
 $PT = 29 + 76.16$

**CURVE #VII**  
 $D_{100} = 810.52'$   
 $\Delta = 23^{\circ} 49' 20''$   
 $\Delta/2 = 11^{\circ} 54' 40''$   
 $R = 70.00'$   
 $T = 14.77'$   
 $L = 29.10'$   
 $E = 1.54'$   
 $PC = 30 + 73.48$   
 $PI = 30 + 88.25$   
 $PT = 31 + 02.58$

**CURVE #VIII**  
 $D_{100} = 630.40'$   
 $\Delta = 110^{\circ} 00' 00''$   
 $\Delta/2 = 55^{\circ} 00' 00''$   
 $R = 90.00'$   
 $T = 128.33'$   
 $L = 170.68'$   
 $E = 66.91'$   
 $PC = 31 + 59.28$   
 $PI = 32 + 87.81$   
 $PT = 33 + 31.96$

**KEY:**  
 M.S.H.D. 22-A  
 BANKRUN GRAVEL

