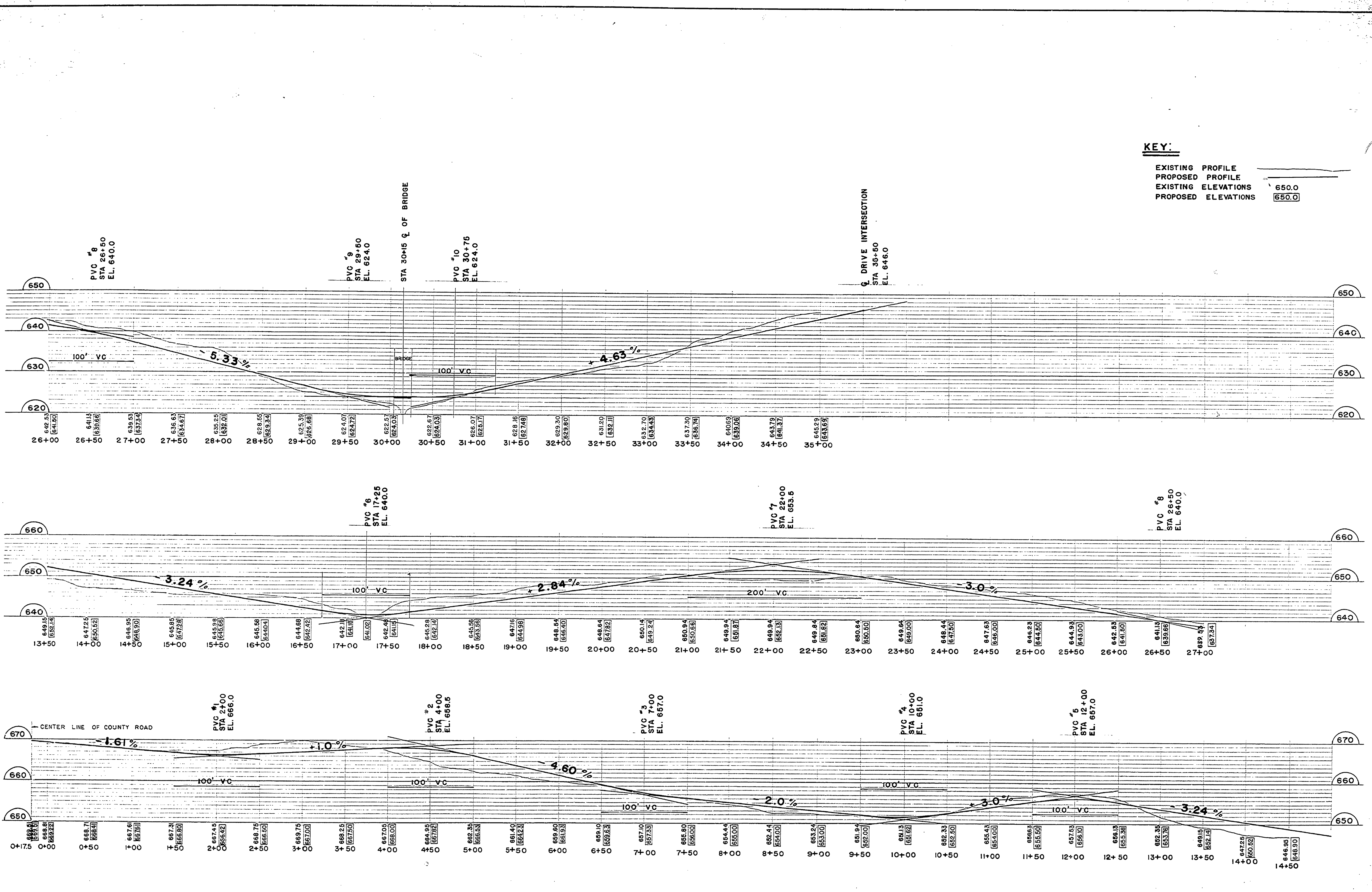


DESIGNED BY	DATE	REVIEWED	DATE	APPROVED	DATE	NO.	DATE	BY	REVISIONS	DATE	BY
JACK A. DREW ASSOC., INC. LANDSCAPE ARCHITECTS LANSING, MICHIGAN		ARCHITECTURAL				1			4		
		ENGINEERING				2			5		
		LANDSCAPE				3			6		



DESIGNED BY JACK A. DREW ASSOC., INC. LANDSCAPE ARCHITECTS LANSING, MICHIGAN  
 DRAWN BY LAILA & NUCHESTERLEIN ASSOC., INC. ARCHITECTS LANSING, MICHIGAN  
 CHECKED BY BOLTON & HELVESTON ENGINEERS CONSULTING ENGINEERS LANSING, MICHIGAN

INDIAN LAKE STATE PARK WEST SHORE SECTION

SCALE VERTICAL: 1" = 10'-0" HORIZONTAL: 1" = 50'-0"

MICHIGAN DEPARTMENT OF CONSERVATION PARKS AND RECREATION DIVISION

MAIN PARK DRIVE

SHEET NO. 9 OF 24

PLAN NO. 1056