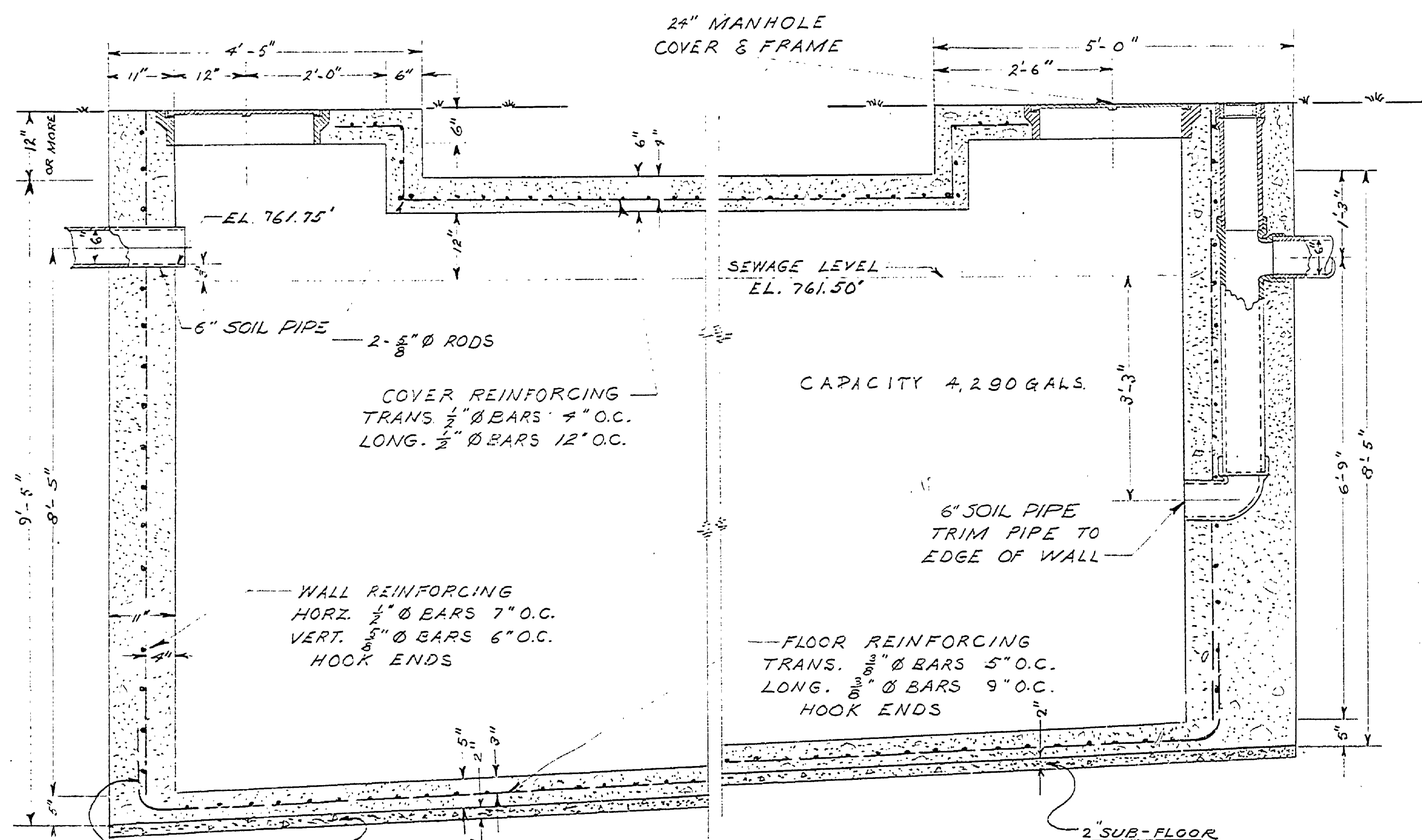


PLAN



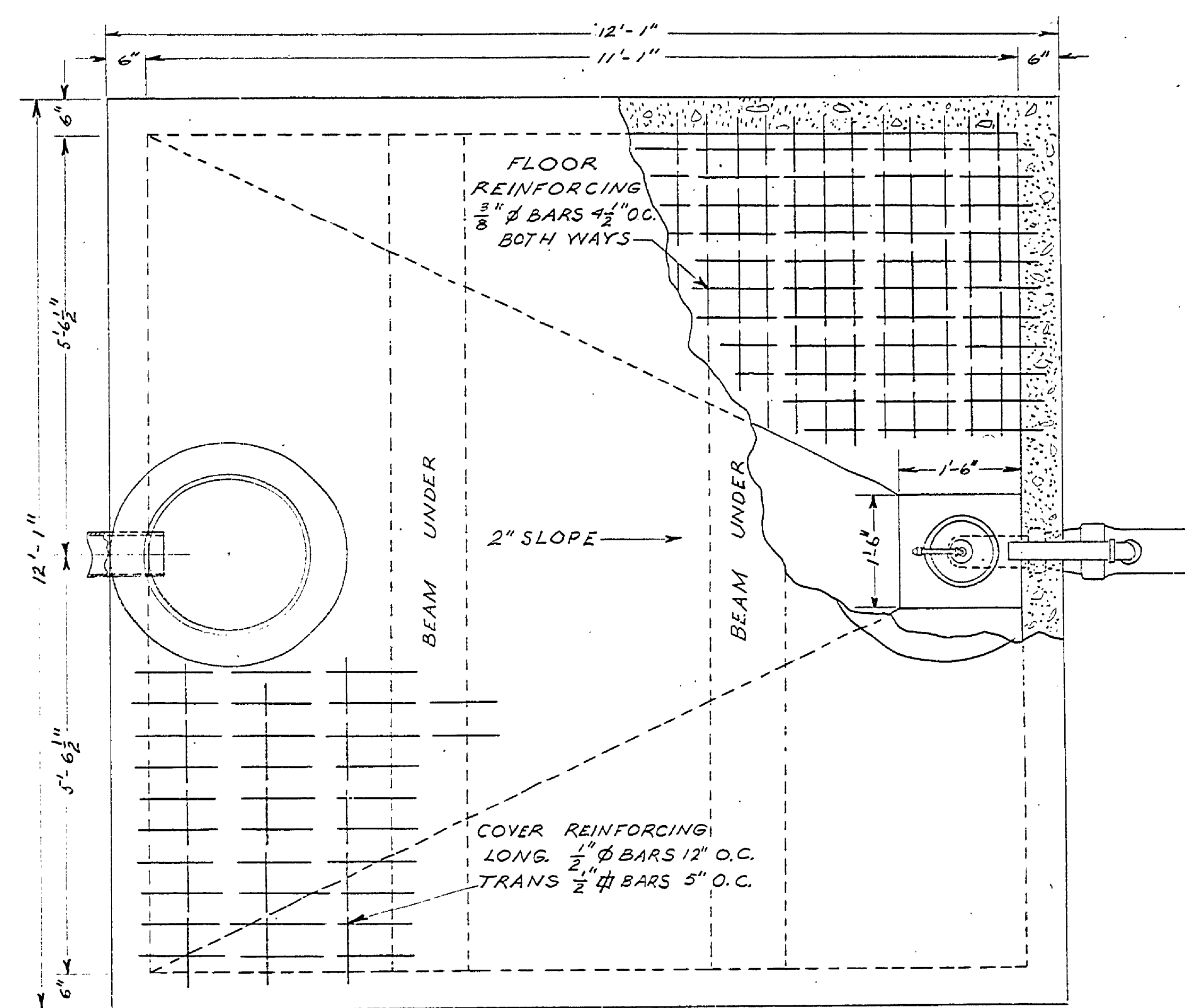
CROSS SECTION
SEPTIC TANK
SCALE: 1/4" = 1'-0"

CONCRETE SPECIFICATIONS

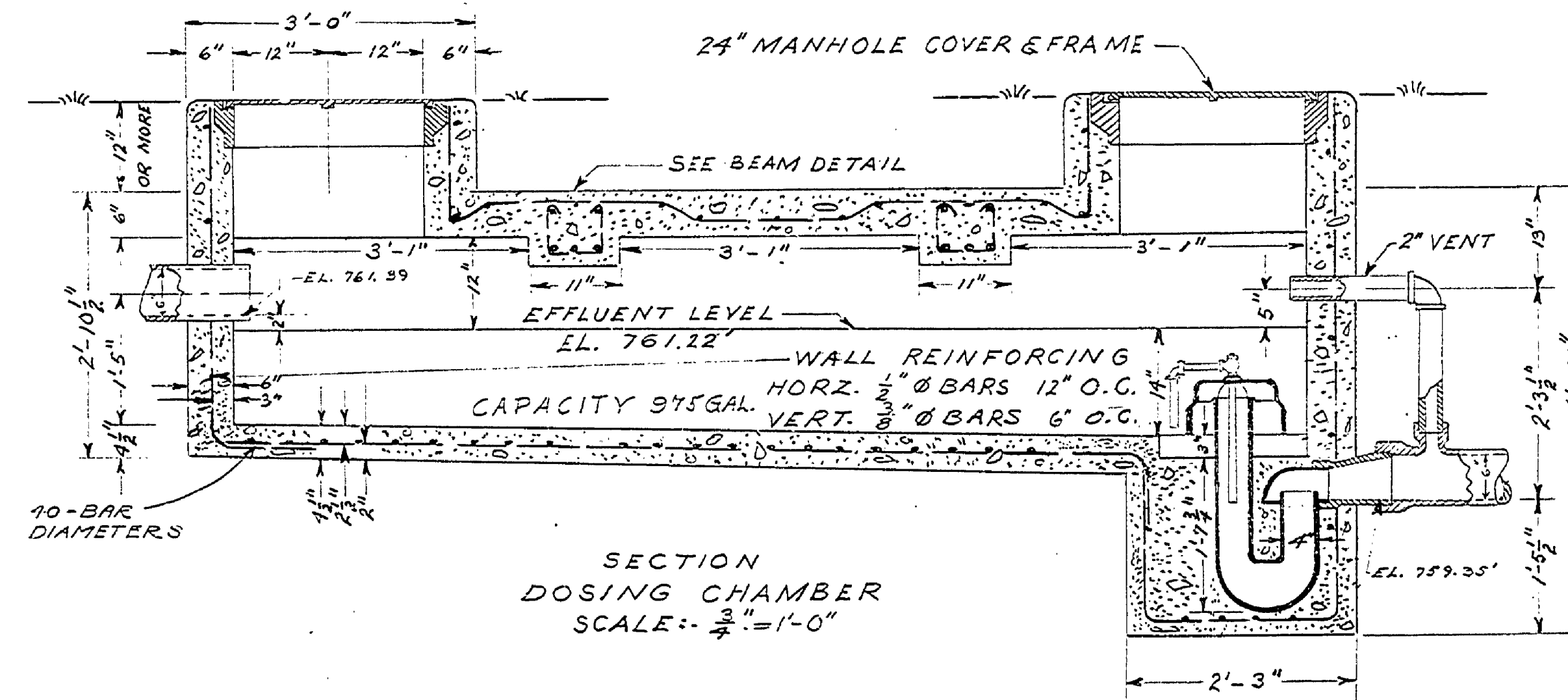
THE MIX SHALL CONSIST OF 1 SACK OF CEMENT, 2.81 CU. FT. OF FINE AGGREGATE, 4.75 CU. FT. OF COURSE AGGREGATE, AND ENOUGH WATER TO MAKE A WORKABLE MIX BUT NOT TO EXCEED 6 GALLONS; OR 1 SACK OF CEMENT, 6.5 CU. FT. OF BANK RUN AGGREGATE, AND ENOUGH WATER TO MAKE A WORKABLE MIX BUT NOT TO EXCEED 6 GALLONS.

THE AGGREGATE SHALL BE CLEAN, FREE FROM CLAY BALLS, AND SHALL ALL PASS A 2" SCREEN. THE TIME OF MIXING SHALL BE NOT LESS THAN 1 1/2 MINUTES.

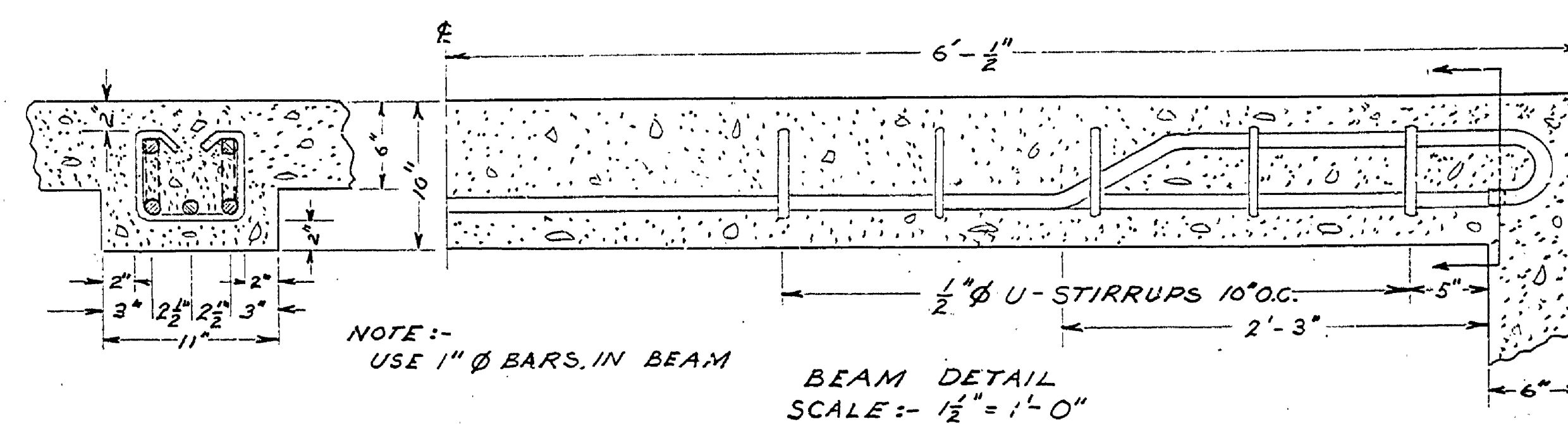
THE CONCRETE SHALL BE PLACED IN THE FORMS IN HORIZONTAL LAYERS NOT OVER 2 FEET THICK AND THOROUGHLY SPADED ALONG THE FORMS AND AROUND THE REINFORCING STEEL.



PLAN



SECTION
DOSING CHAMBER
SCALE: 1/4" = 1'-0"



NOTE: USE 1" Ø BARS IN BEAM

BEAM DETAIL
SCALE: 1/2" = 1'-0"

J.M. Hedges
CONSTRUCTION PERMIT NO. 3376