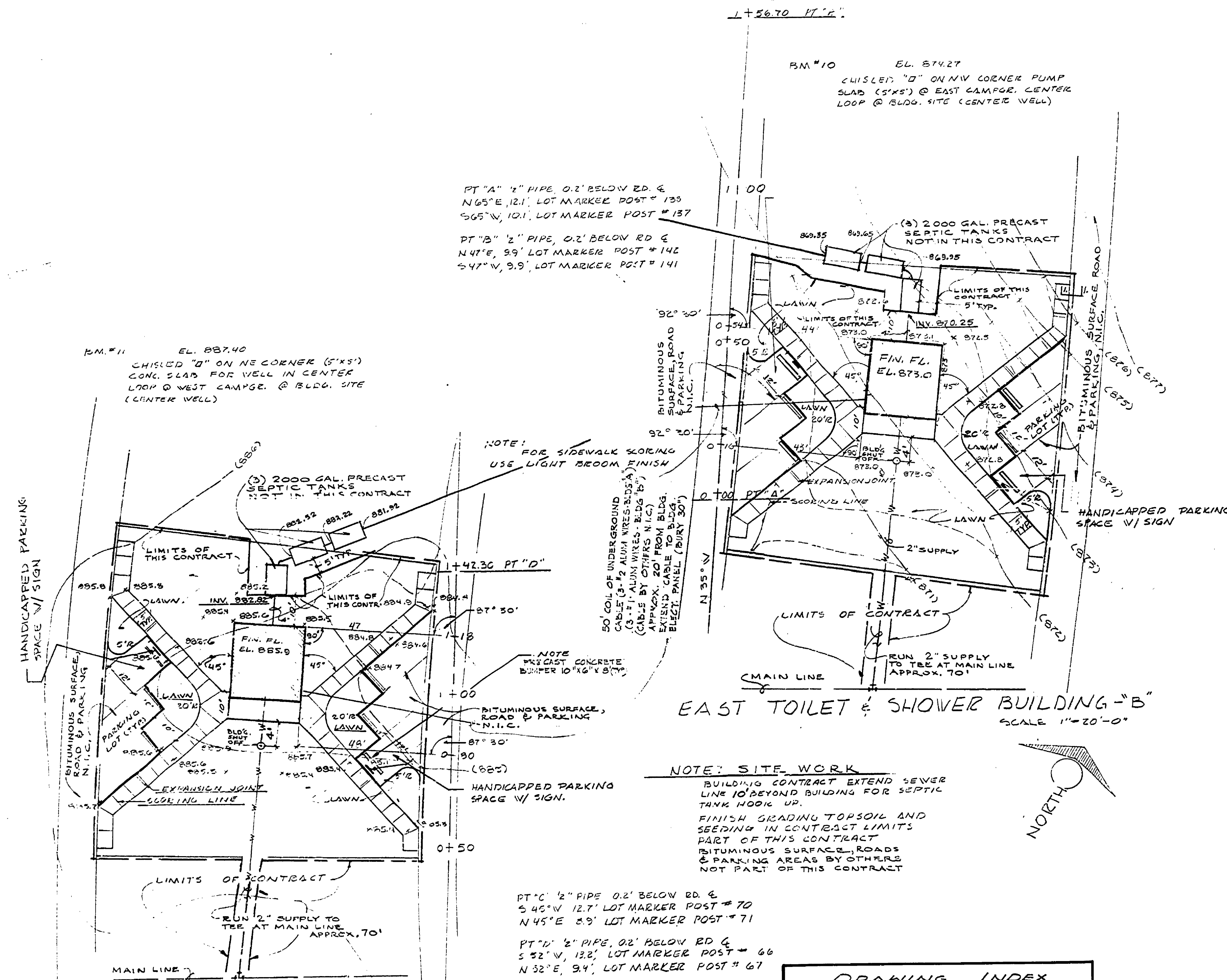


CLEAR LAKE STATE PARK

TOILET & SHOWER BUILDING

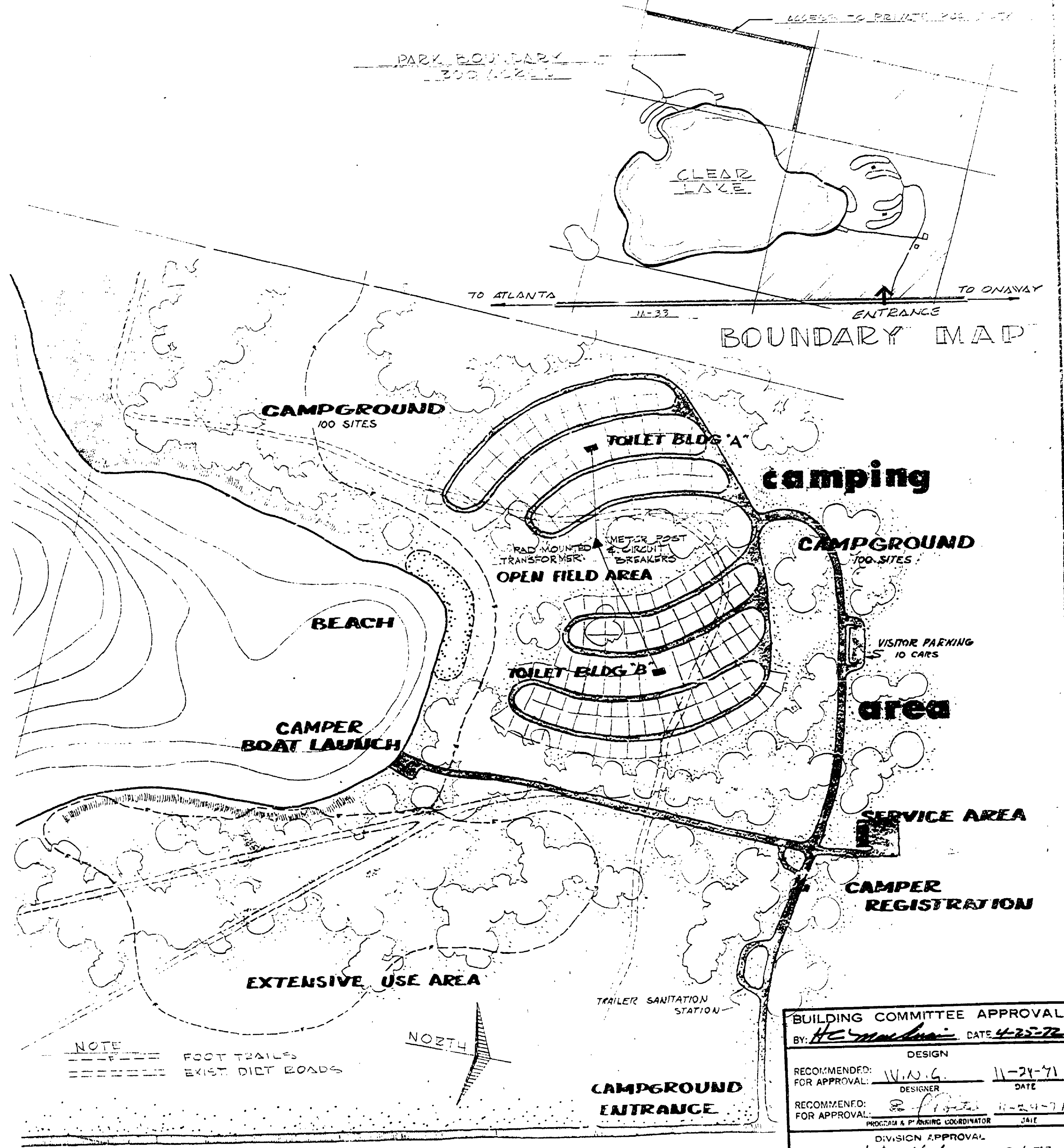
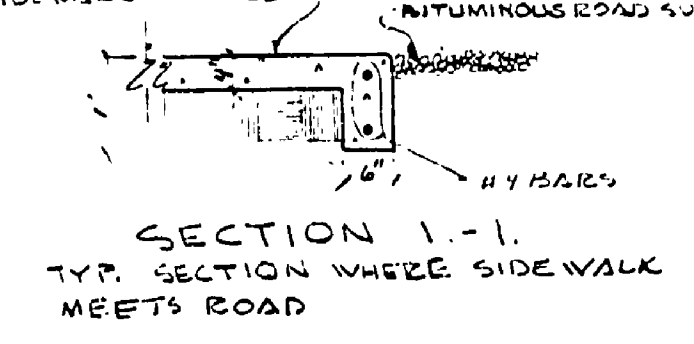


"A" WEST TOILET & SHOWER BUILDING
SCALE 1" = 20'-0" 0+00 FT'S

EAST TOILET & SHOWER BUILDING "B"
SCALE 1" = 20'-0"

NOTE: SITE WORK
BUILDING CONTRACT EXTEND SEWER LINE 10' BEYOND BUILDING FOR SEPTIC TANK HOOK UP.
FINISH GRADING TOPSOIL AND SEEDING IN CONTRACT LIMITS PART OF THIS CONTRACT.
BITUMINOUS SURFACE, ROADS & PARKING AREAS BY OTHERS NOT PART OF THIS CONTRACT.

DRAWING INDEX	
DWG. NO.	SHEET TITLE
1	SITE PLAN AND COVER SHEET FOR TOILET BUILDINGS "A" & "B"
2	FLOOR PLAN - ELEVATIONS - DETAILS (FOR BLDG. "A")
3	FOUNDATION-MECHANICAL SECTIONS - DETAILS (FOR BLDG. "A")
4	FLOOR PLAN - ELEVATIONS - DETAILS (FOR BLDG. "B")
5	FOUNDATION-MECHANICAL SECTIONS - DETAILS (FOR BLDG. "B")



LOCATION PLAN

BUILDING COMMITTEE APPROVAL	
BY	DATE
DESIGN	
RECOMMENDED: <i>W.A.G.</i>	11-24-71
FOR APPROVAL: <i>W.A.G.</i>	DATE
DESIGNER	
RECOMMENDED: <i>D.J. Schickel</i>	11-24-71
FOR APPROVAL: <i>D.J. Schickel</i>	DATE
DIVISION APPROVAL	
BY: <i>D.J. Schickel</i>	DATE 9-1-72
SUPERVISOR	
MICHIGAN DEPARTMENT OF NATURAL RESOURCES	
APPROVED: <i>W.A.G.</i>	3-1-72
CHIEF ENGINEER	DATE

SURVEYED BY	DRAWN BY	NO.	DATE	BY	REVISIONS	NO.	DATE	BY	REVISIONS
	G. TONPEINS	1	11-71			1			
DESIGNED BY	CHECKED BY		DATE			2			

MICHIGAN DEPARTMENT OF NATURAL RESOURCES	CLEAR LAKE STATE PARK MONTAIGNEY COUNTY	SHEET NO. 1 OF 5 FOR PROJECT NO. 24-1705
--	---	---