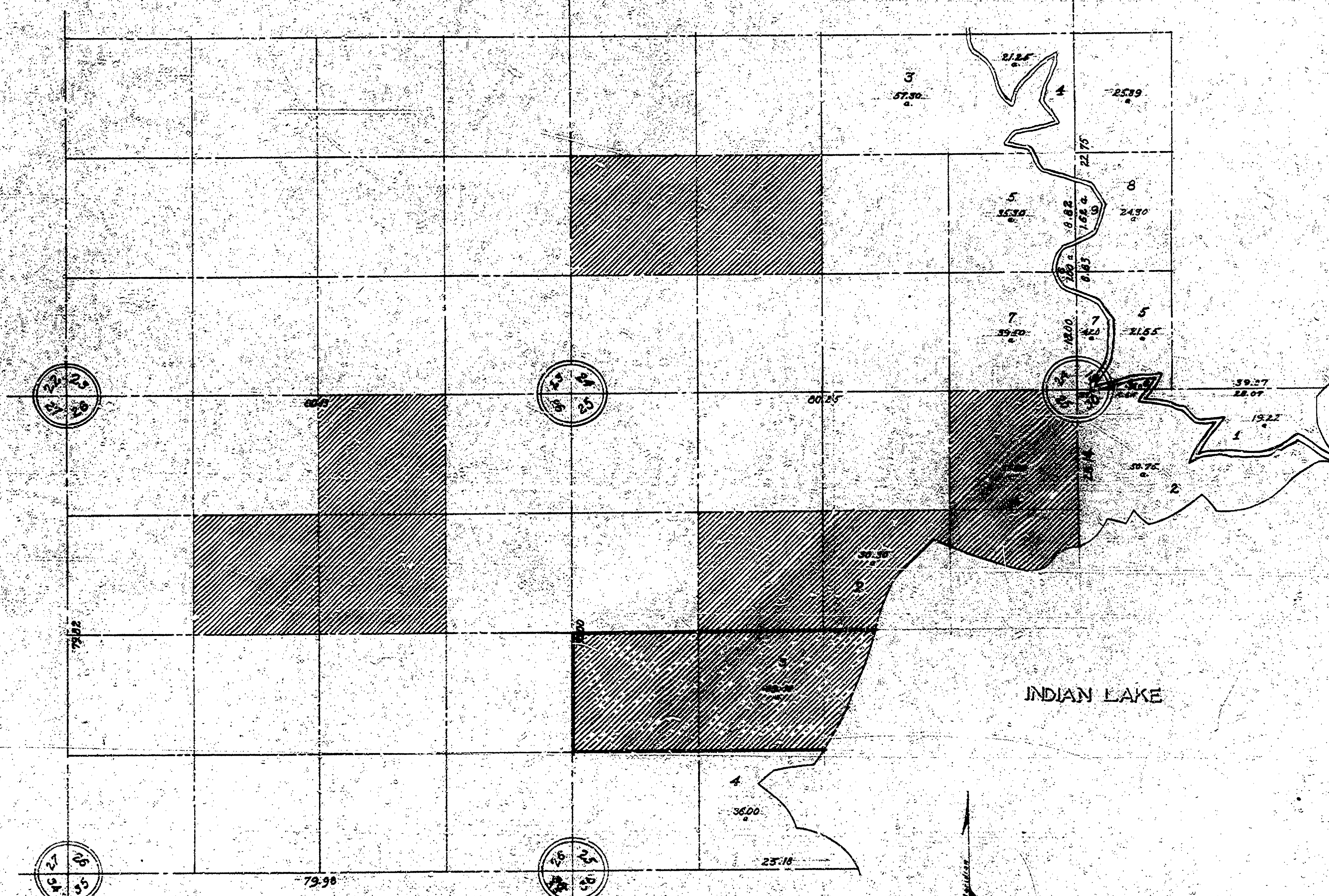


# PALMS BOOK STATE PARK SCHOOLCRAFT COUNTY

T42N-R1617W



**KEY**

----- Section Line  
 - - - - - 1/2 Line  
 - - - - - 1/4 Line

State Park Land - Deeded by Palms Book Land Co.  
 Not to be used as a public camp site or tourist park.

State Park Land - Obtained by deignment  
 May be developed as camp picnic grounds.

Scale 20 Chained to Inch  
 660 Feet to an Inch  
 8-24-50 H.C.M.

Palms Book S.P.  
 Land Map Q-4