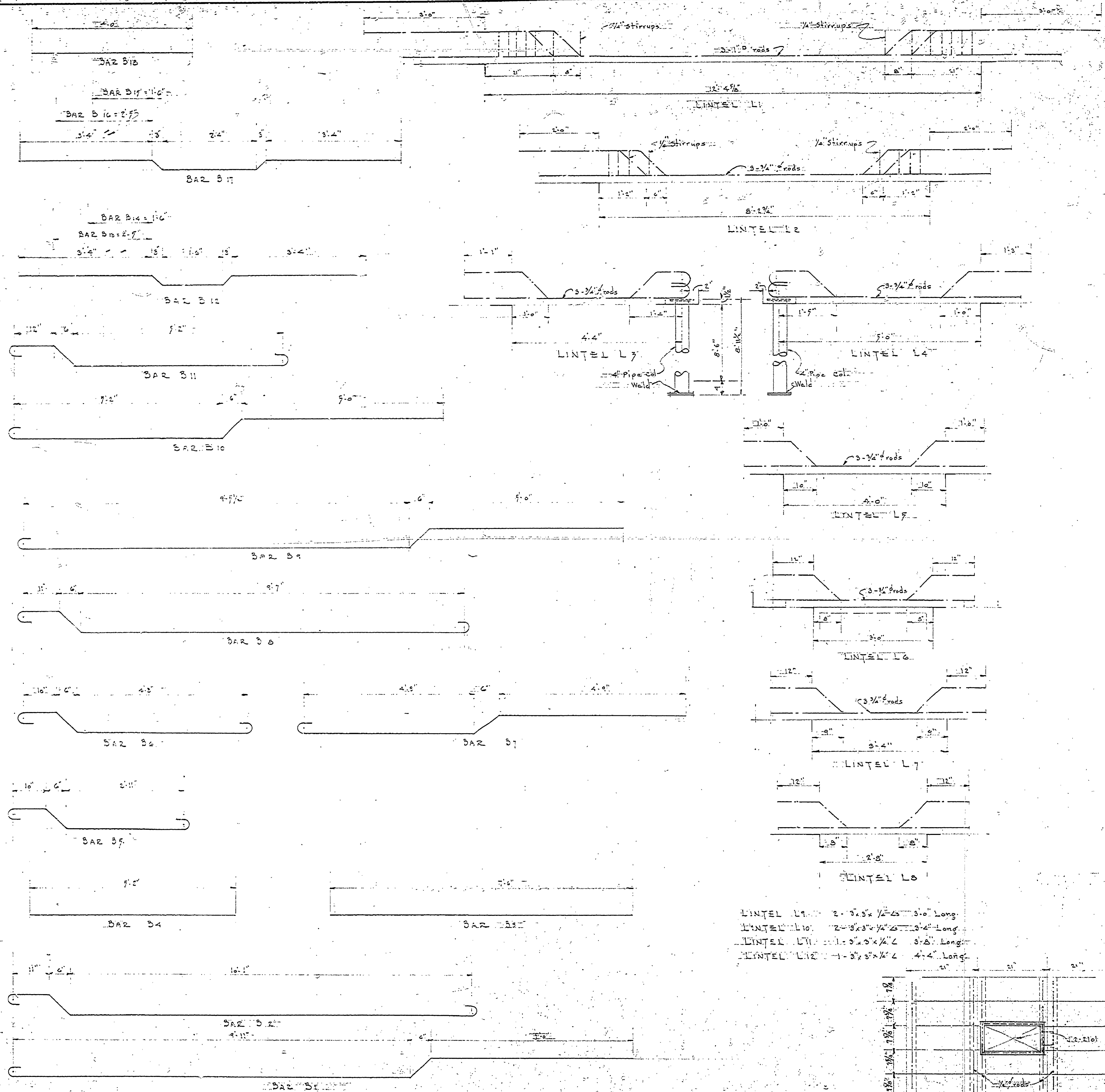
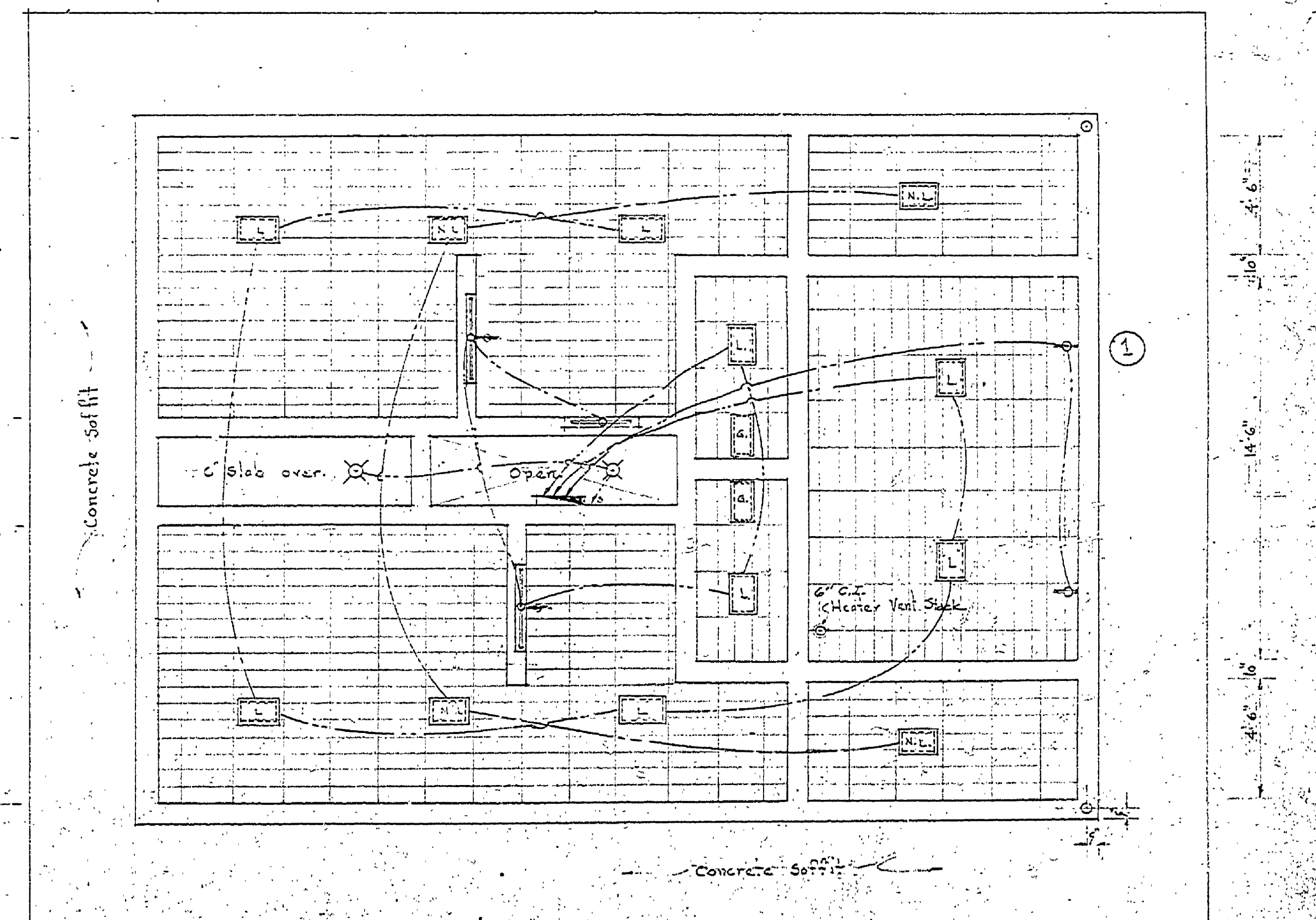
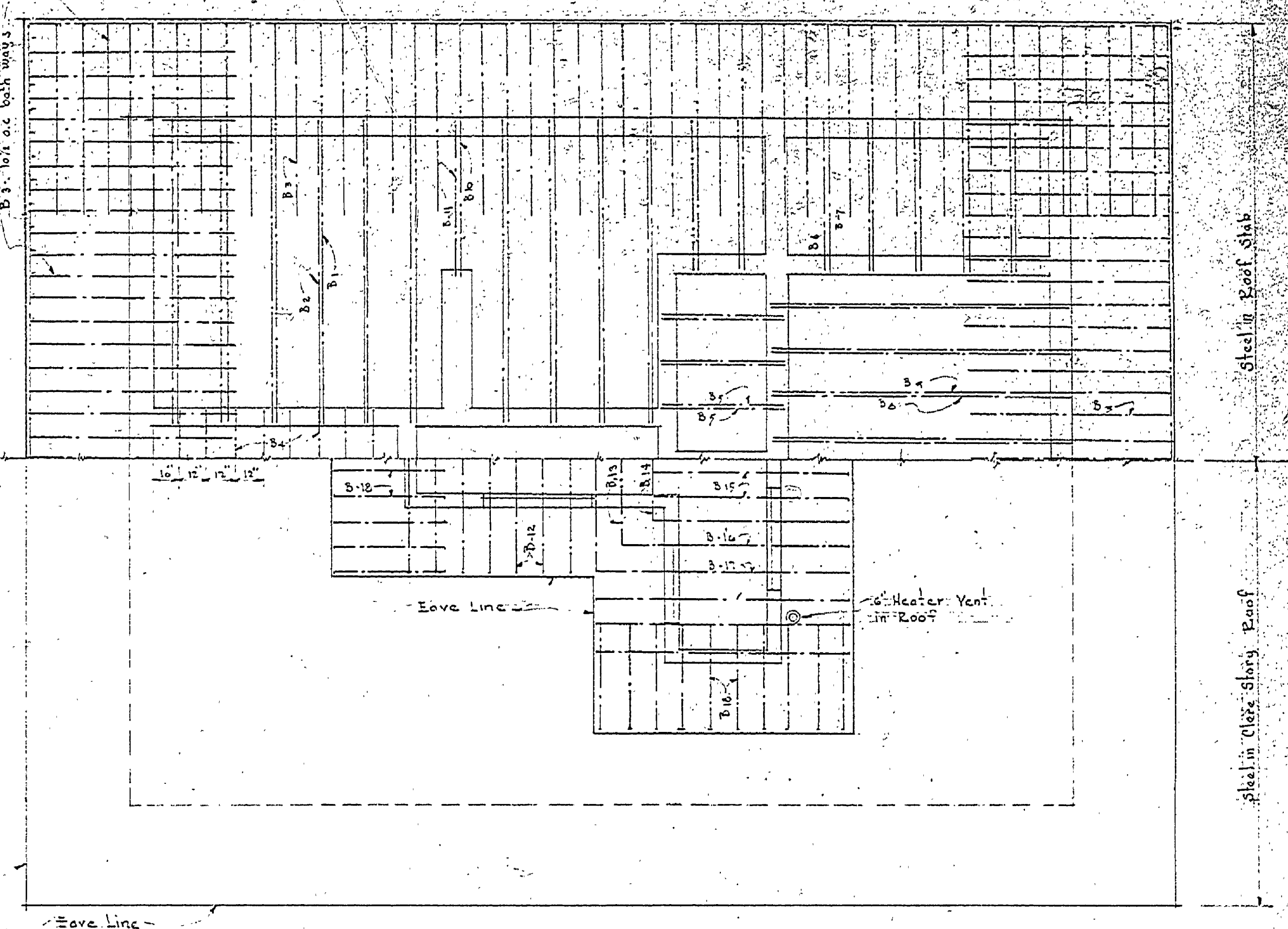
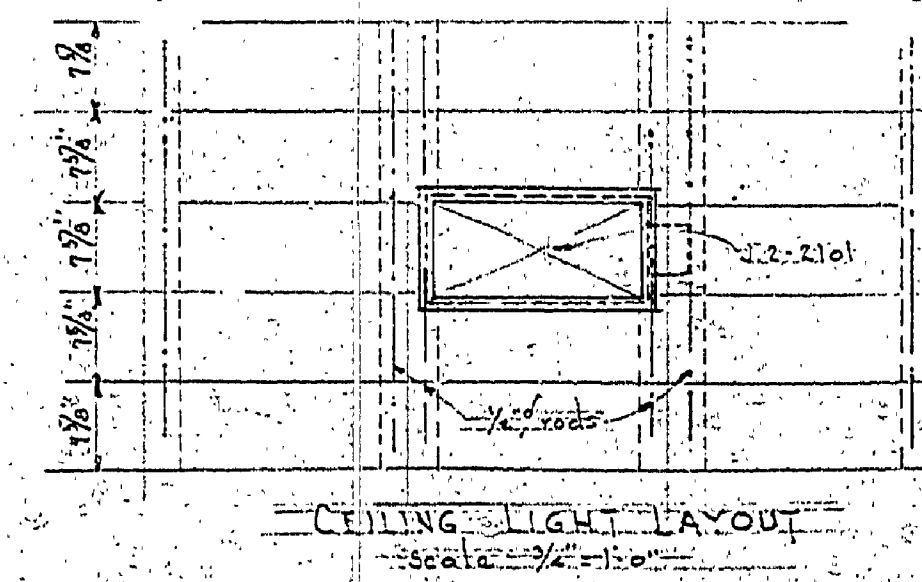


DRAWN BY A. J. FAY	CHECKED BY DATE	REVIEWED BY SECTIONS		APPROVED BY		NO. DATE BY		REVISIONS			
		ARCHITECTURAL	ENGINEERING	LANDSCAPE	DATE	BY	1	2	3	4	5
J.I.R. 10-1-52	J.I.R. 10-1-52	J.I.R. 10-1-52	J.I.R. 10-1-52	H.C. McAndrews	J.I.R. 10-1-52	1	2	3	4	5	6
		ASSISTANT CHIEF IN CHARGE		DATE		BY		REVISIONS			
		OF DESIGN		DATE		BY		REVISIONS			



LINTEL L1: 2-5/8" x 1/2" x 3'-0" Long
 LINTEL L2: 2-5/8" x 1/2" x 3'-0" Long
 LINTEL L3: 2-5/8" x 1/2" x 3'-0" Long
 LINTEL L4: 2-5/8" x 1/2" x 3'-0" Long
 LINTEL L5: 2-5/8" x 1/2" x 3'-0" Long
 LINTEL L6: 2-5/8" x 1/2" x 3'-0" Long
 LINTEL L7: 2-5/8" x 1/2" x 3'-0" Long
 LINTEL L8: 2-5/8" x 1/2" x 3'-0" Long
 LINTEL L9: 2-5/8" x 1/2" x 3'-0" Long
 LINTEL L10: 2-5/8" x 1/2" x 3'-0" Long

NOTE: See contractor to verify all steel dimensions.



MICHIGAN DEPARTMENT OF CONSERVATION PARKS AND RECREATION DIVISION

CHARLES MEARS STATE PARK CAMP GROUND AREA TOILET, LAUNDRY & SHOWER BUILDING

PROJECT No. 62-227-10
 SHEET NO. 4 OF 5
 PLAN NO. A-100