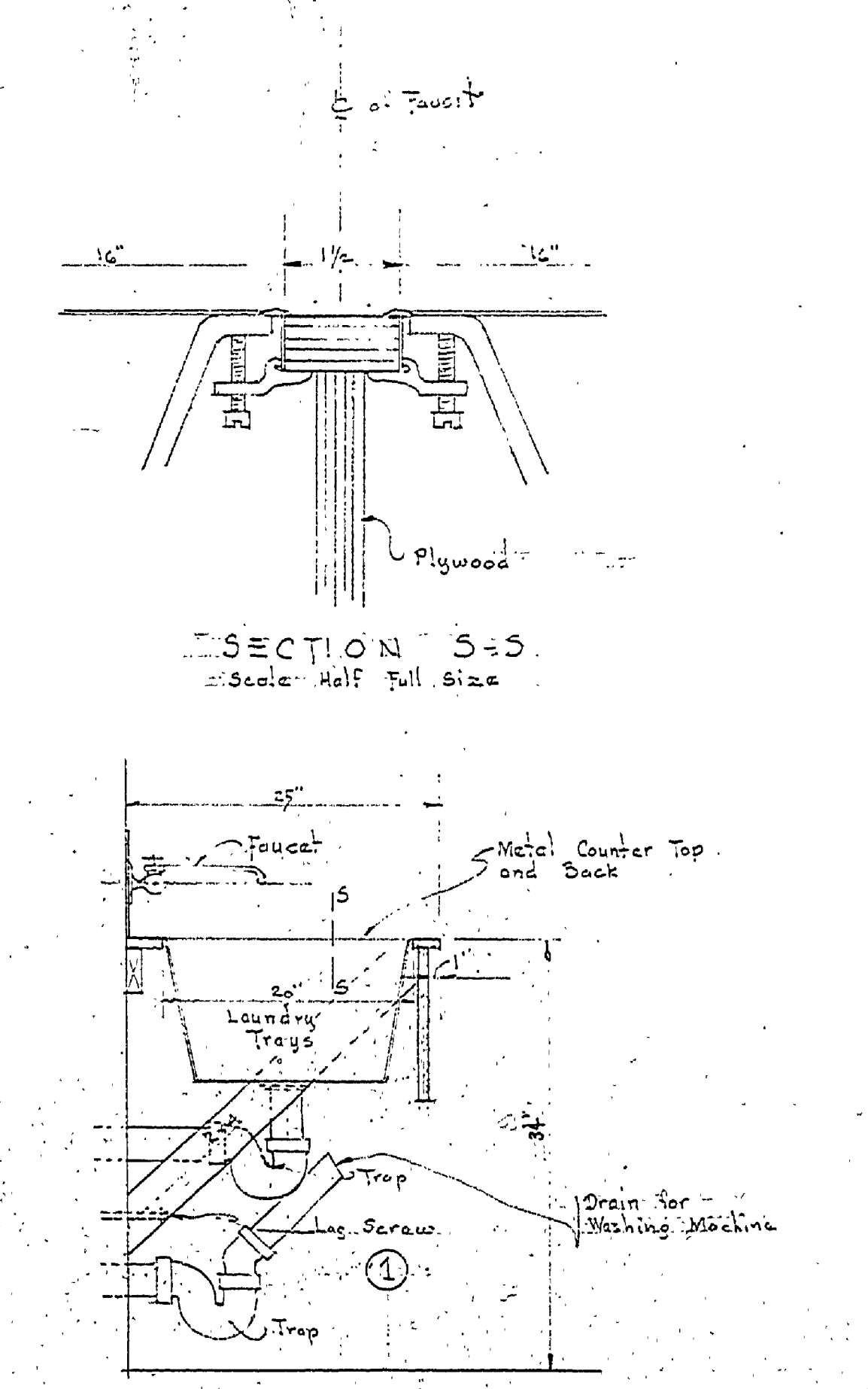
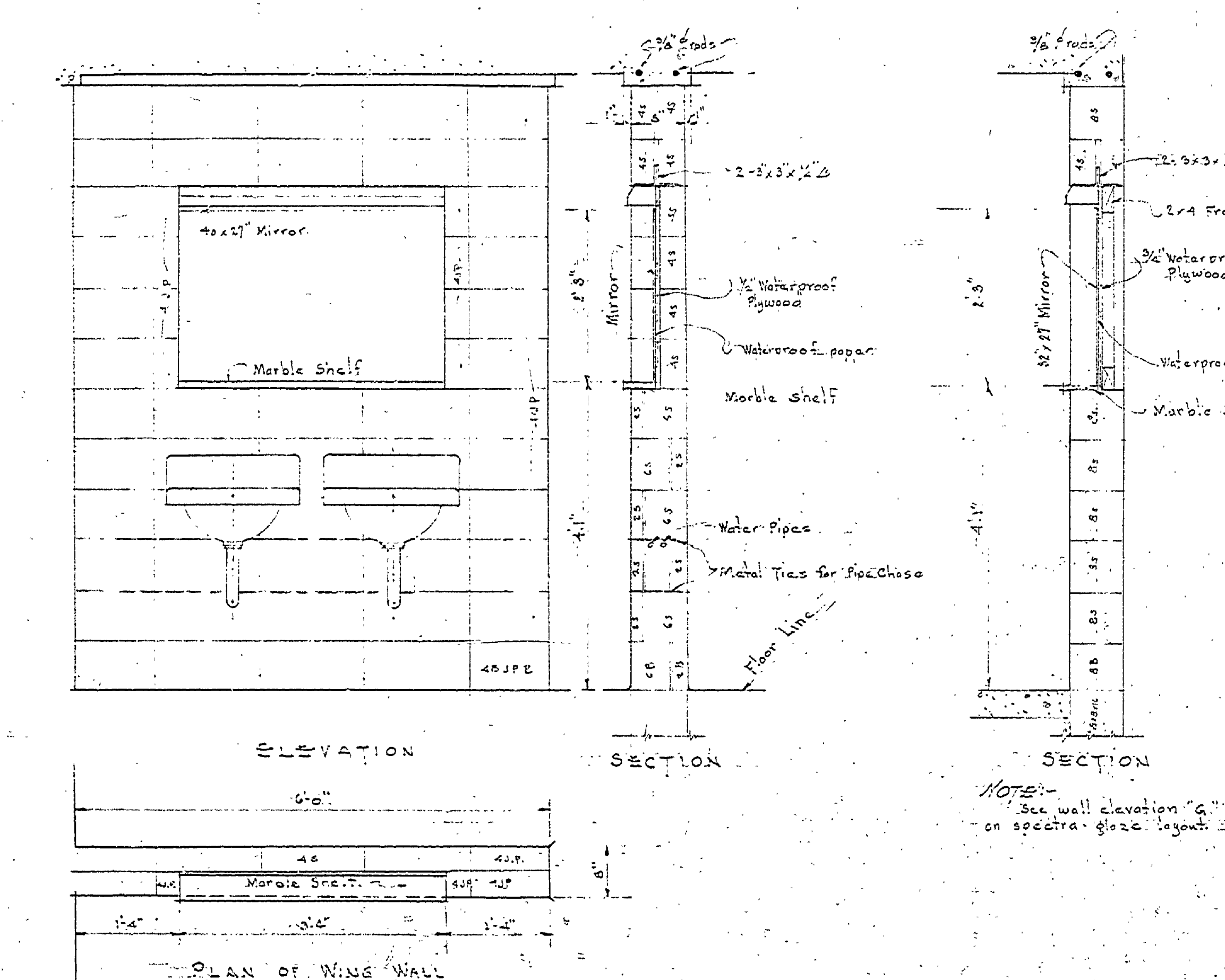
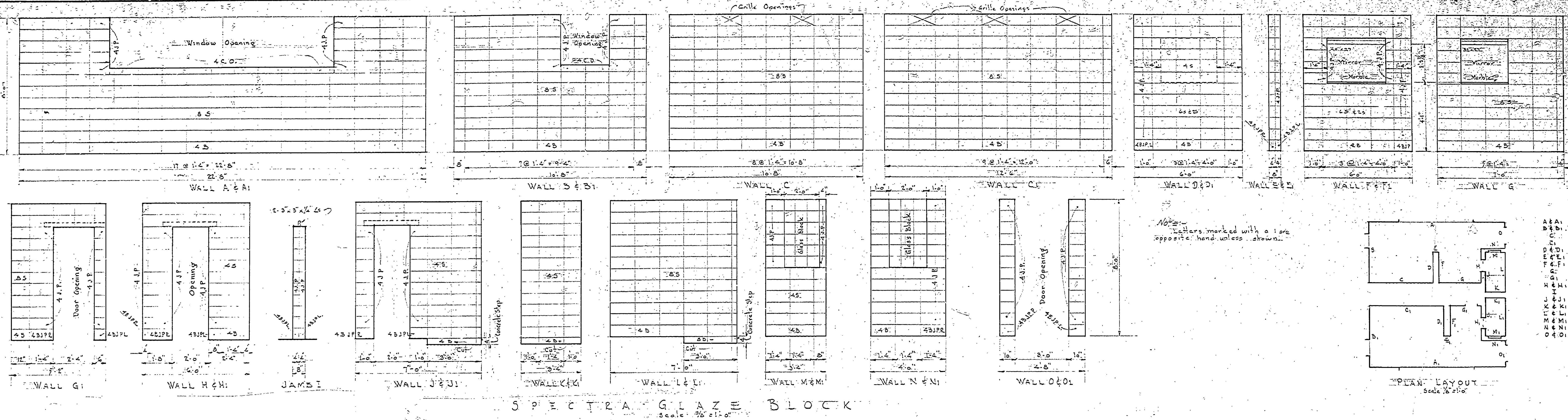


DRAWN BY TRACED BY CHECKED BY DATE	REVIEWED BY SECTIONS ARCHITECTURAL ENGINEERING LANDSCAPE	APPROVED BY ASSISTANT CHIEF IN CHARGE OF DESIGN	NO. DATE 1 2/10/52 2 3	REVISIONS 4 5 6	DATE BY
---	---	---	---------------------------------	--------------------------	---------



FINISH SCHEDULE

EXTERIOR FINISH

All exterior masonry apply two (2) coats Para-stonetex rubber base paint (Truscon Laboratories Detroit, Mich.) Color 48 parts Cement Gray to 1 part brick red by weight. All masonry surfaces first prepared for painting by applying one (1) coat Portland cement paint thoroughly scrubbed into surface and properly cured.

Steel fastenings before installation with Protolombant.

Non-lead Red Lead Primer after glazing painted one (1) coat P.L. Effects Enamel primer and one (1) coat Effects Enamel color gray to match color of exterior masonry. All window screens, steel lintels and pipe columns painted same as steel work.

Steel to have two (2) coats of Surco yellow lead waterproofing.

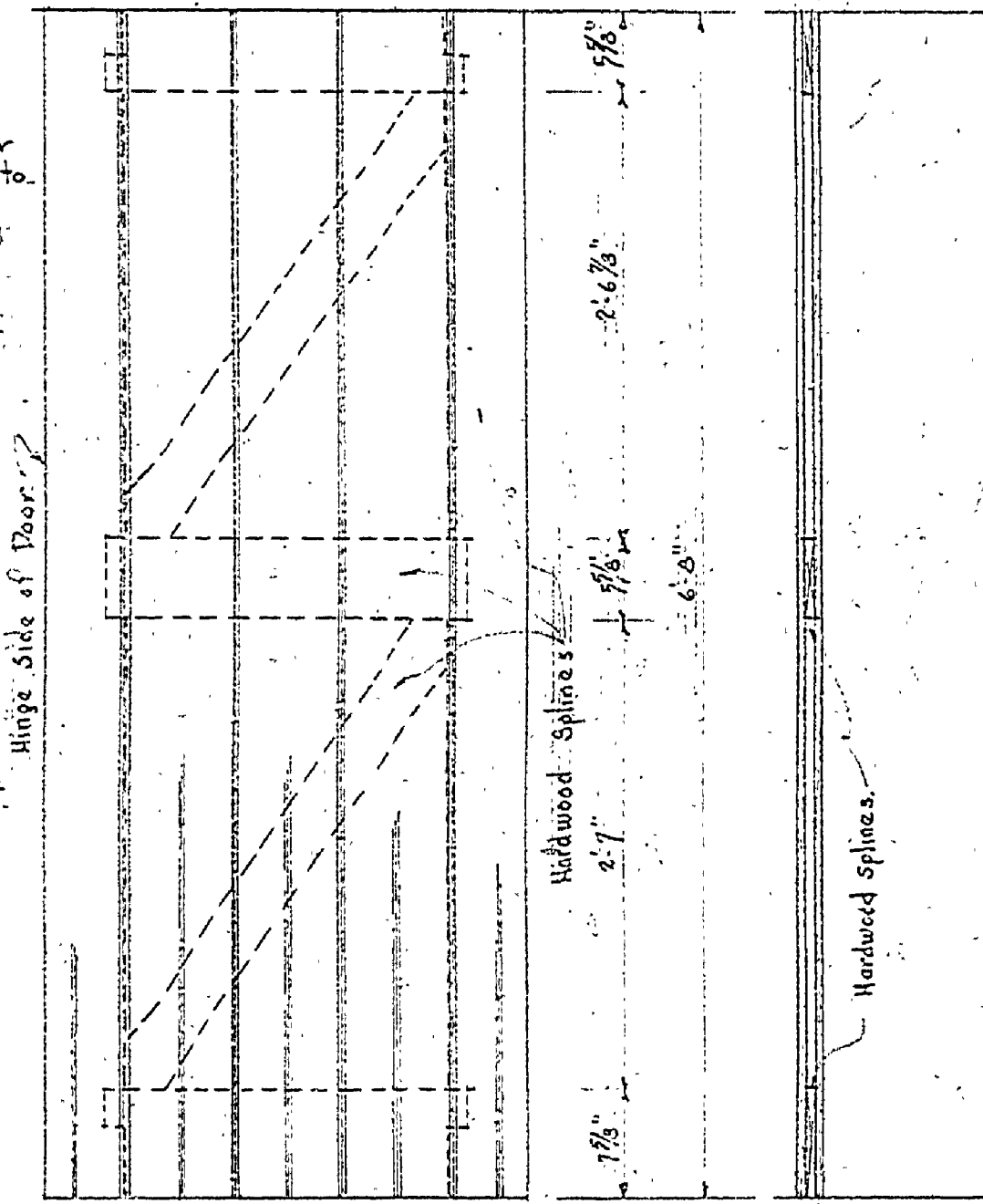
INTERIOR FINISH

Apply to toilet room ceiling two (2) coats Glidden Spered Satin color Pinecrest Green No. 2472. Laundry room ceiling two (2) coats Spered Satin color White. On laundry room walls and masonry base of cabinets apply one (1) coat P.L. Enamel and one (1) coat Cellu-Tone Satin color White. To laundry room cabinets apply one (1) coat reduced Cellu-Tone Satin (1 part P.L. Primer to 2 parts of Cellu-Tone Satin) and one (1) coat Cellu-Tone Satin color White.

Doors, door frames and shower room benches one (1) coat Protection Products Woodlife and one (1) coat P.L. Effects Enamel Primer and two (2) coats P.L. Effects Enamel color gray to match color of exterior masonry. On first black cabinet and cabinet base in laundry room apply two (2) coats P.L. Effects Enamel color same as doors.

Concrete floors when thoroughly dry shall be finished with two (2) coats Gombach and Lydall in concrete. See hardware.

NOTE: All mixed colors to be approved by the Architect before application.



Five T & G White Pine
V on one side

A 2'-0\"/>

PROJECT No. 62-277-10	SHEET NO. 5	PLAN NO. A-100
-----------------------	-------------	----------------

MICHIGAN DEPARTMENT OF CONSERVATION PARKS AND RECREATION DIVISION
 CHARLES MEARS STATE PARK CAMP GROUND AREA TOILET, LAUNDRY & SHOWER BUILDING