

DESIGNED BY	DATE	REVIEWED	DATE	APPROVED	DATE	NO.	DATE BY	REVISIONS	DATE BY
D.H.A.	Feb. 54	ARCHITECTURAL				1		4	
J.Y.	Feb. 54	ENGINEERING				2		5	
B.H.G.	Nov. 54	LANDSCAPE				3		6	

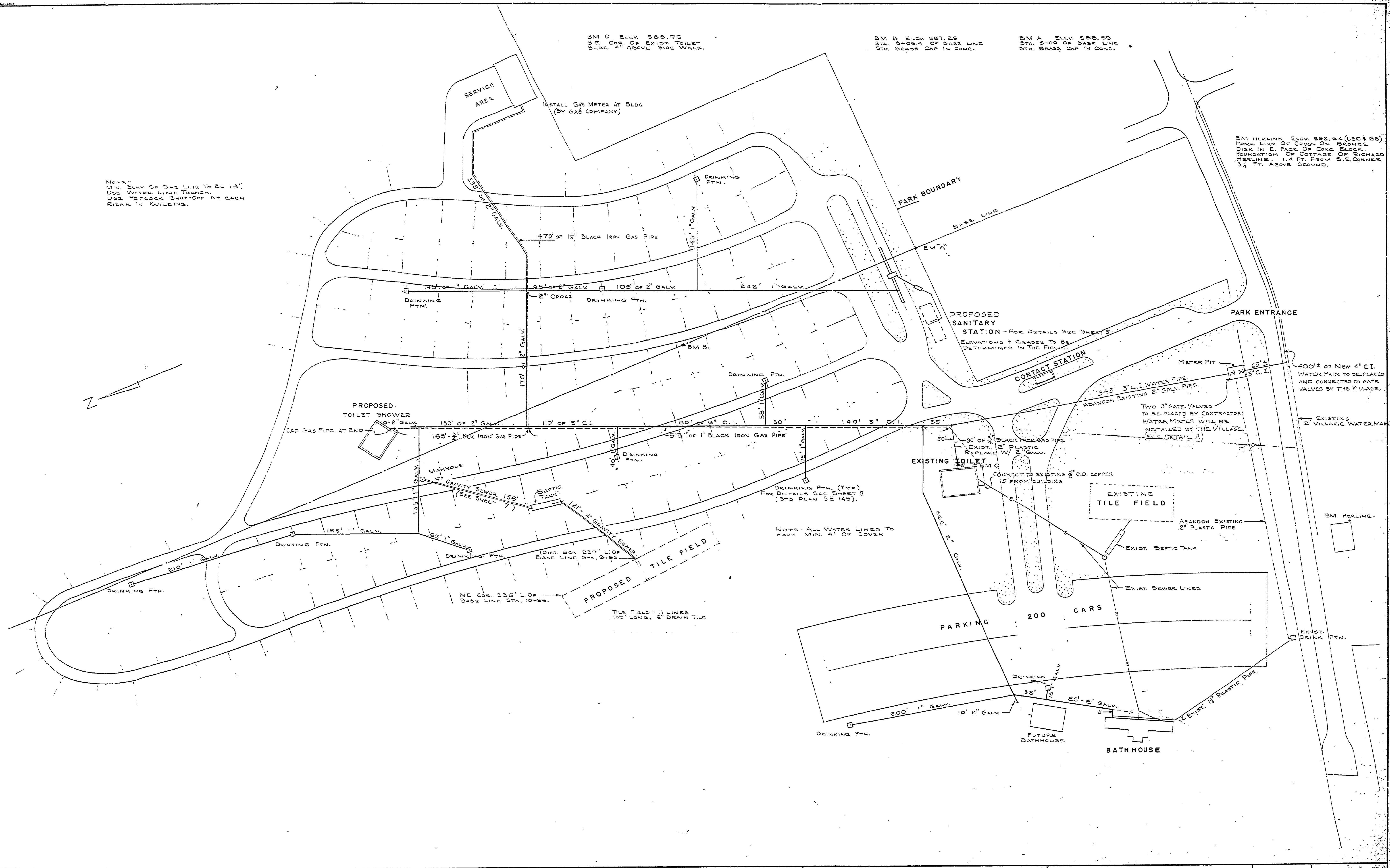
NO. 4  
MIN. DUCTY ON GAS LINE TO BE 1.5"  
USE WATER LINE TRENCH.  
USE PETCOCK SHUT-OFF AT EACH  
RISK IN BUILDING.

BM C ELEV. 589.75  
5' E. COR. OF EXIST. TOILET  
BLDG. 4' ABOVE SIDE WALK.

BM B ELEV. 587.25  
STA. 5+05.4 OF BASE LINE  
STD. BRASS CAP IN CONC.

BM A ELEV. 588.55  
STA. 5+00 OF BASE LINE  
STD. BRASS CAP IN CONC.

BM HERLINE ELEV. 582.54 (UC&GS)  
MORSE LINE OF CROSS ON BRONZE  
DISK IN E. FACE OF CONC. BLOCK  
FOUNDATION OF COTTAGE OF RICHARD  
HESLINGER. 1.4 FT. FROM S.E. CORNER  
3 1/2 FT. ABOVE GROUND.



SCALE 1" = 50'

MICHIGAN  
DEPARTMENT OF CONSERVATION  
PARKS AND RECREATION DIVISION

MEARS STATE PARK  
WATER AND SEWER SYSTEMS -  
GAS SYSTEM

SHEET NO. 1  
OF 5

PLAN NO.  
E-106

976-014-37-C2

SHEET 4 OF 11