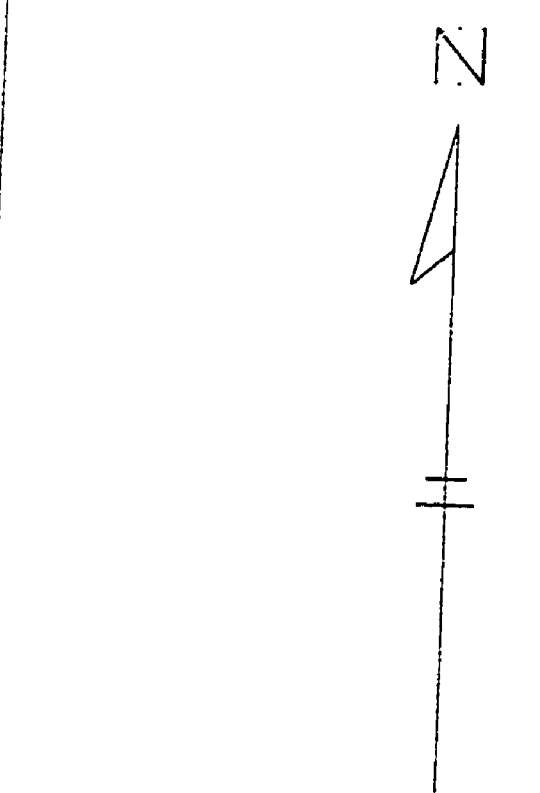
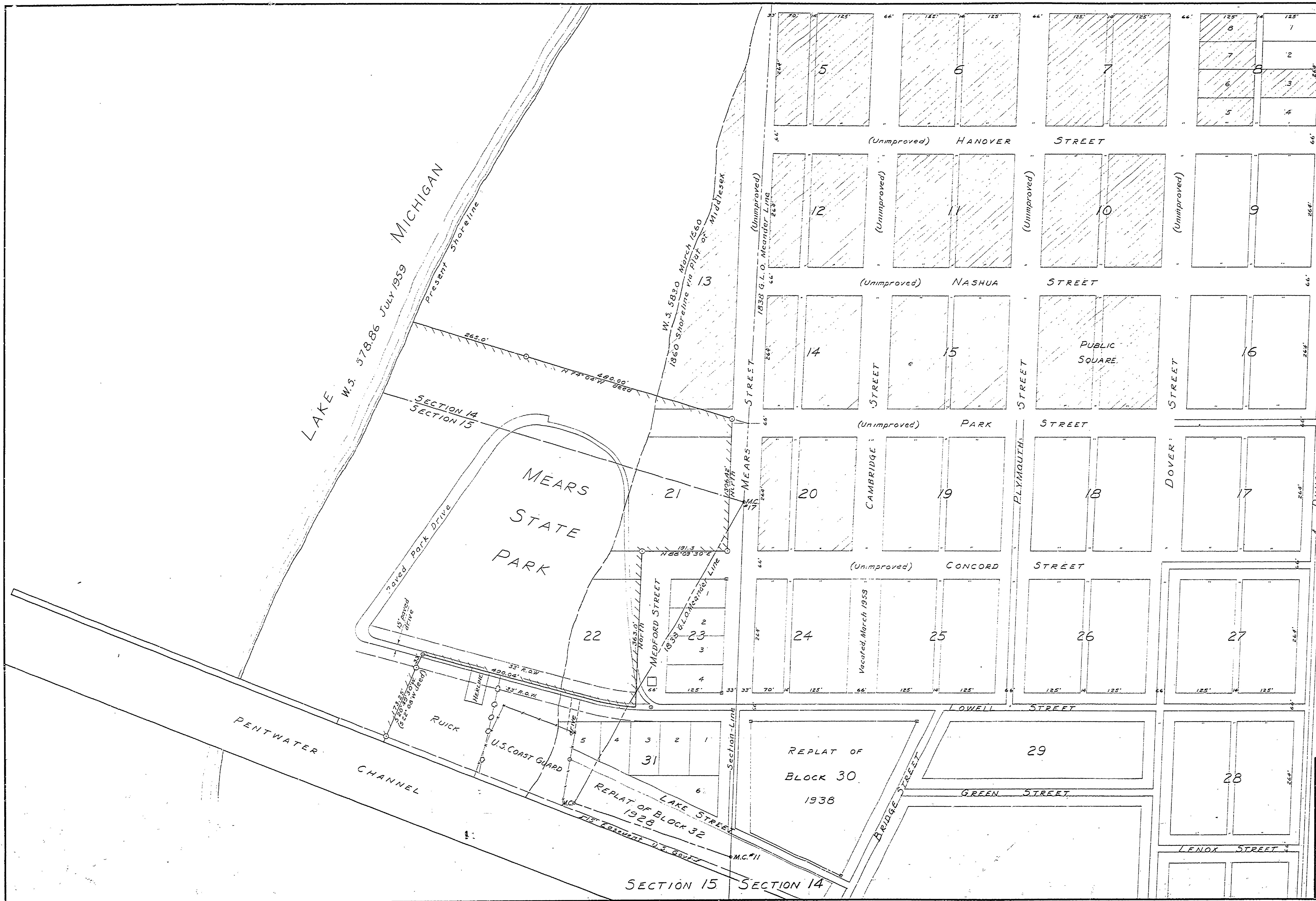


1700 8-11-57
 1710 8-11-57
 1720 8-11-57
 1730 8-11-57
 1740 8-11-57



Note:
 The Lots and Blocks shown
 are a part of the PLAT OF
 MIDDLESEX VILLEGE OF
 PENTWATER, MICHIGAN and
 recorded in March, 1860.
 Shaded areas are proposed
 future additions for Mears State
 Park.

LEGEND
 M.C. Meander Corner, not set
 Survey Point
 4" iron pipe with brass cap
 Plat Monument
 State Park Boundary

SCALE 1"=100'

MICHIGAN DEPARTMENT OF CONSERVATION ENGINEERING AND ARCHITECTURE	
MEARS STATE PARK BOUNDARY SURVEY AREA MAP PARKS DIVISION OCEANA COUNTY	
APPROVED: <i>[Signature]</i> ENGINEER IN CHARGE	DATE: 10-21-57 PLAN: X64B-1
APPROVED: <i>[Signature]</i> CHIEF OF SURVEYING DIVISION	DATE: 7-59 SHEET: 1 OF 2
DESIGNED BY: W.L. PADDISON DRAWN BY: A.V. MCCANN CHECKED BY:	DATE: 8-58 REVISION:

E-108 X64B-1