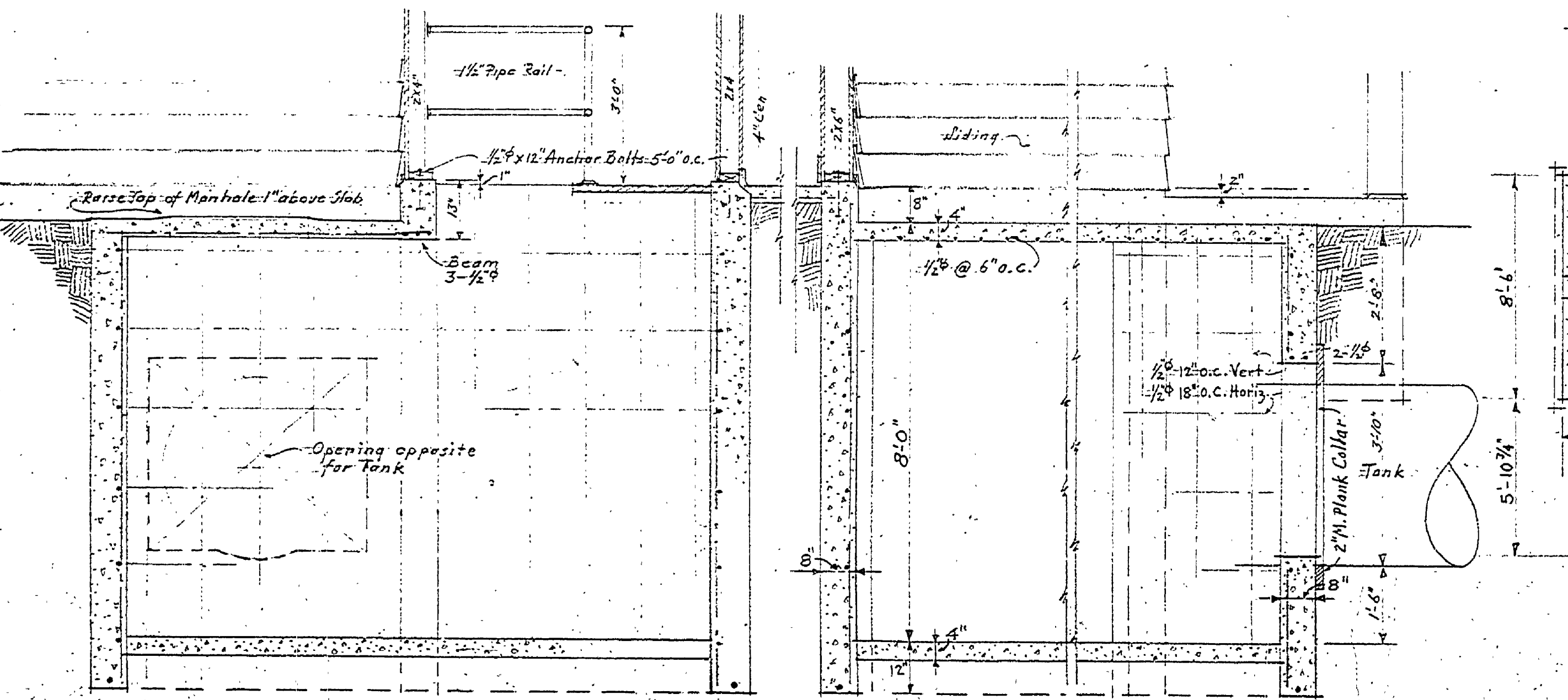


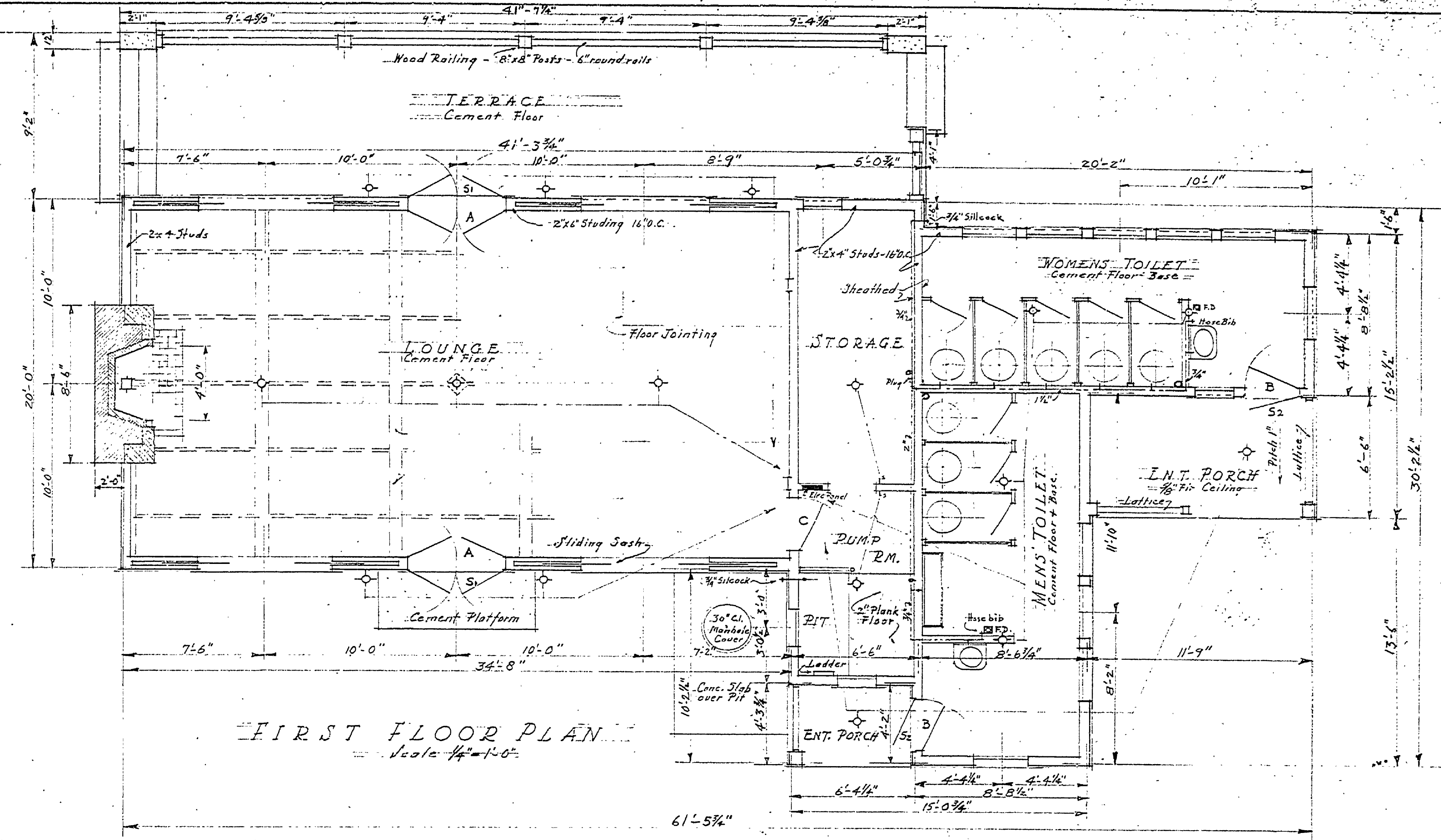
CHIMNEY SECTION
Scale 1/2" = 1'-0"

PART CROSS SECTION THRU
LOUNGE & TERRACE

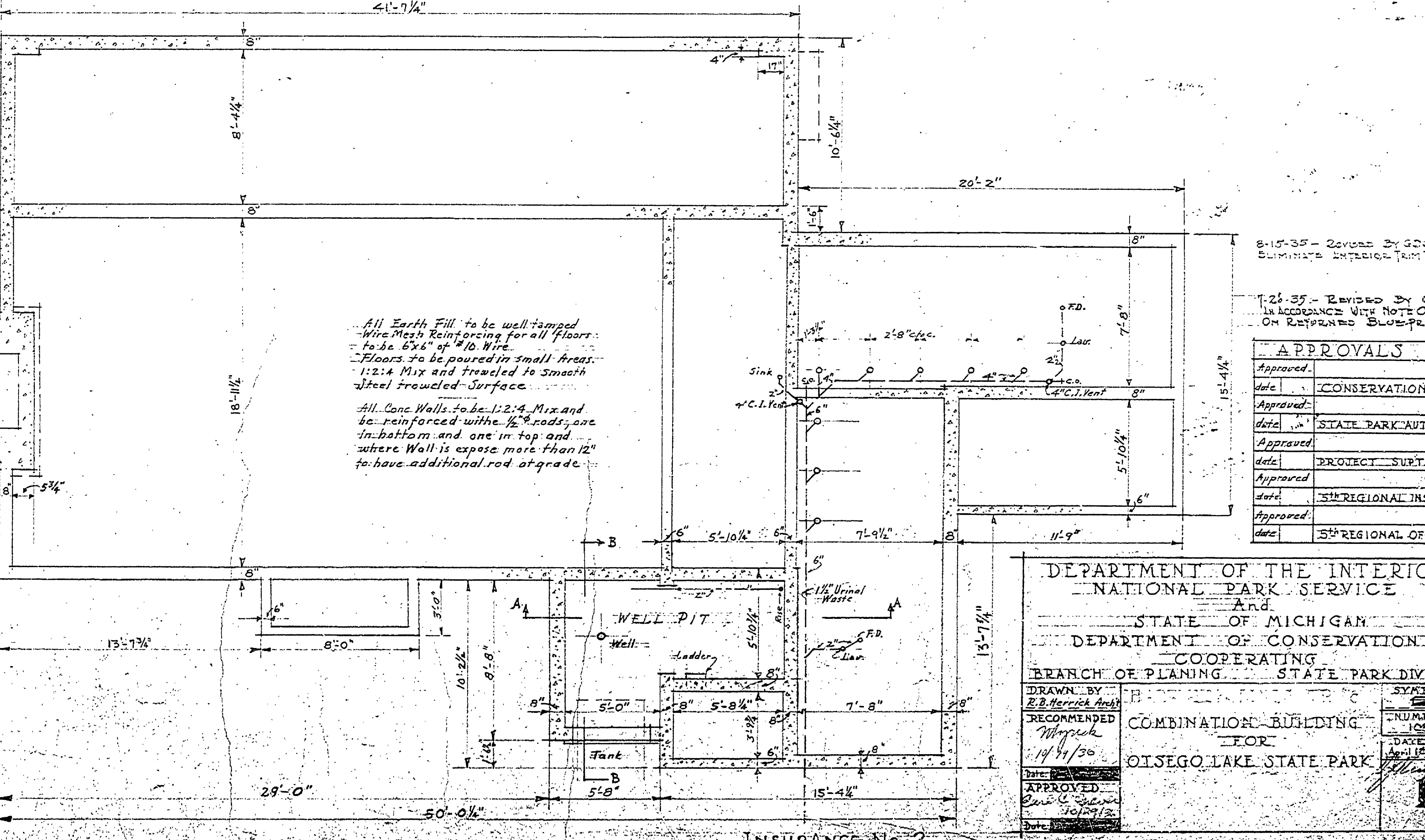


SECTION ON LINE A-A
Scale 1/2" = 1'-0"

SECTION ON LINE B-B



FIRST FLOOR PLAN
Scale 1/4" = 1'-0"



All Earth Fill to be well tamped
Wire Mesh Reinforcing for all floors
to be 6"x6" at 4" o.c.
Floors to be poured in small areas
1:2:4 Mix and troweled to smooth
steel troweled surface

All Conc. Walls to be 1:2:4 Mix and
be reinforced with 1/2" rods, one
in bottom and one in top and
where Wall is expose more than 12"
to have additional rod at grade.

8-15-35 - Revised by G.D. to
eliminate exterior joint sheathing

7-24-35 - Revised by G.D. to
in accordance with note of C.M.E.
on returned blueprints

APPROVALS	
Approved:	
date:	CONSERVATION COMM.
Approved:	
date:	STATE PARK AUTHORITY
Approved:	
date:	PROJECT SUPT.
Approved:	
date:	5th REGIONAL INSPECTOR
Approved:	
date:	5th REGIONAL OFFICER

DEPARTMENT OF THE INTERIOR
NATIONAL PARK SERVICE
And
STATE OF MICHIGAN
DEPARTMENT OF CONSERVATION
COOPERATING
BRANCH OF PLANNING STATE PARK DIVISION

DRAWN BY
R.B. Herrick
RECOMMENDED
M. J. [unclear]
14/1/36

COMBINATION BUILDING
FOR
OISEGO LAKE STATE PARK

SYMBOL
NUMBER
C. 108
DATE
APRIL 1935

APPROVED
C. C. [unclear]
10/29/35

INSURANCE No. 2

A-98