

OTSEGO LAKE STATE PARK

TOILET & SHOWER

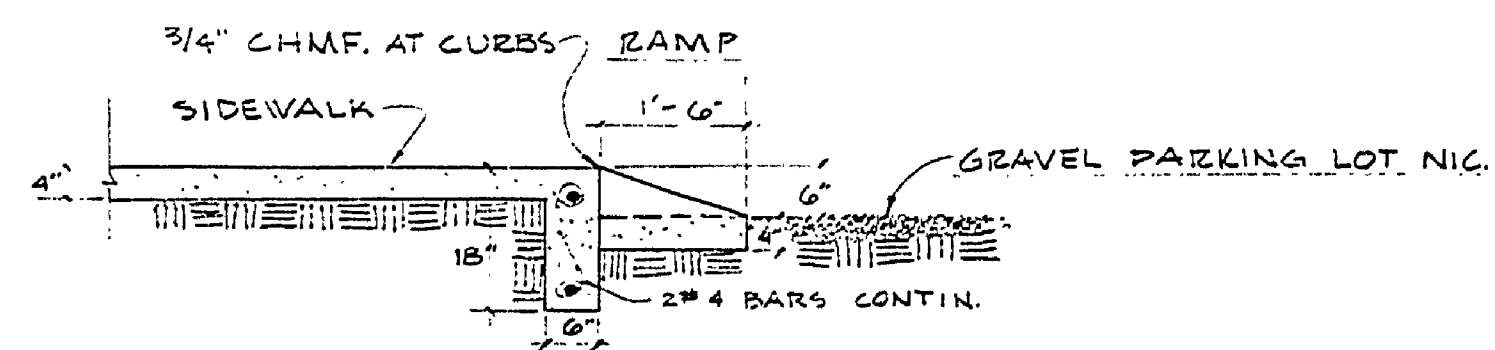
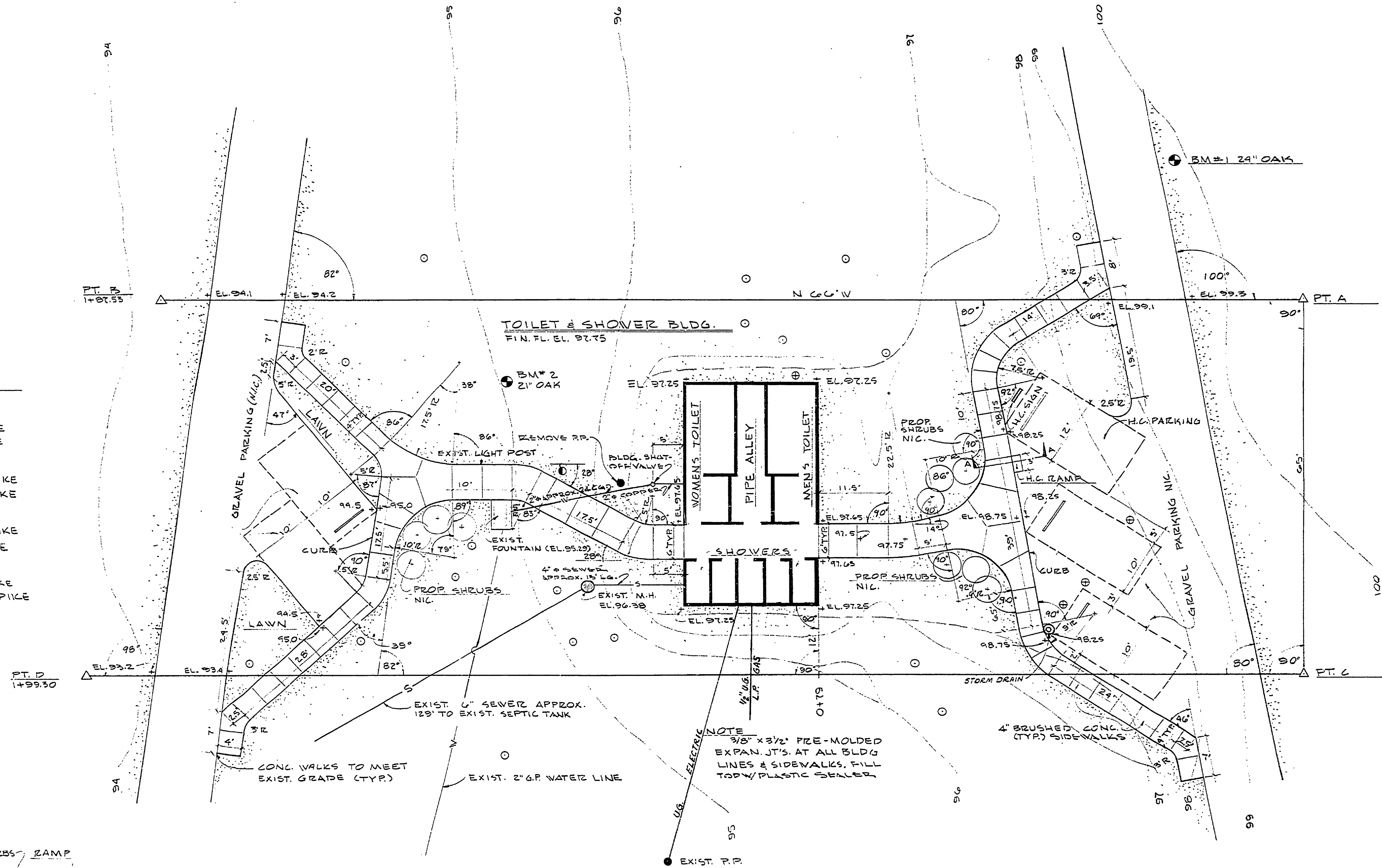
WITNESSES

WITNESSES TO PT. A
 S 35° W, 27.85', 16" OAK SPIKE
 N 15° W, 31.00', 24" OAK SPIKE

WITNESSES TO PT. B
 S 68° W, 2.74', 4" LOCUST SPIKE
 N 15° W, 30.52', TWIN OAK SPIKE

WITNESSES TO PT. C
 S 77° W, 24.18', 6" MAPLE SPIKE
 N 15° W, 38.09', 16" OAK SPIKE

WITNESSES TO PT. D
 S 13° E, 39.22', 20" OAK SPIKE
 WEST 16.09', 12" MAPLE SPIKE



S I T E P L A N



NOTE

- EXIST. TREES
- EXIST. CONTOURS
- PROP CONTOURS
- ⊕ EXIST. TREES TO BE REMOVED
- H.C. HANDICAP

BUILDING COMMITTEE APPROVAL	
BY: _____	DATE: _____
RECOMMENDED FOR APPROVAL: <i>[Signature]</i> 5-11-73	
ENGINEERING OR ARCHITECTURAL SUPERVISOR DATE	
RECOMMENDED FOR APPROVAL: <i>[Signature]</i> 5-11-73	
PROGRAM AND PLAN COORDINATOR DATE	
DIVISION/REGION APPROVAL	
BY: <i>[Signature]</i> 7-24-78	DATE
SUPERVISOR CHIEF REGIONAL MANAGER	
ENGINEERING DIVISION	
APPROVED: <i>[Signature]</i> 7-25-78	DATE
CHIEF ENGINEER	

SURVEYED BY	DRAWN BY G. TOMPKINS	3-28-73	NO.	DATE	BY	REVISIONS	NO.	DATE	BY	REVISIONS	MICHIGAN DEPARTMENT OF NATURAL RESOURCES	TITLE SHEET & SITE PLAN SHEET TITLE	OTSEGO LAKE STATE PARK AREA OR PARK TOILET & SHOWER BUILDING PROJECT	BUILDING COMMITTEE APPROVAL
DESIGNED BY	CHECKED BY	DATE	1.	4-3-77	D.R.B.	AS BUILT	3.							PROJECT NO. 24-1428
			2.				4.							SHEET 1 OF 3 PLAN NO. A-104

RE-MICROFILM