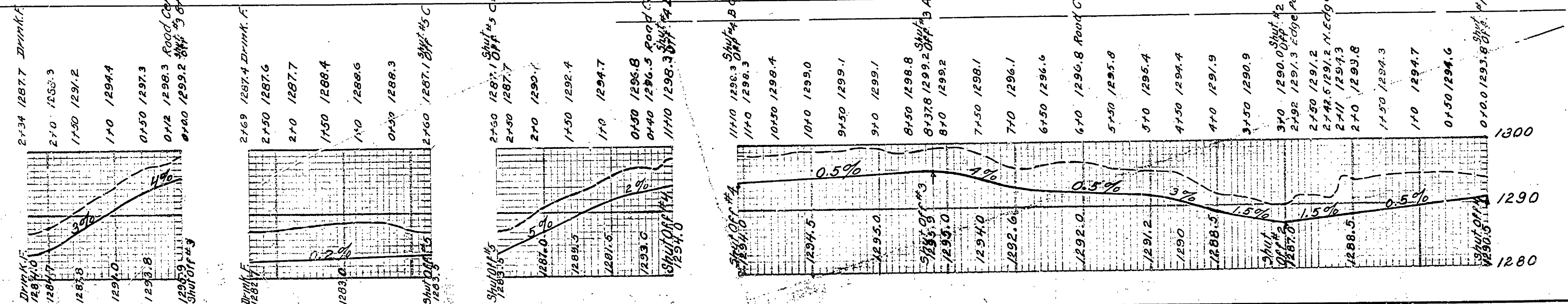
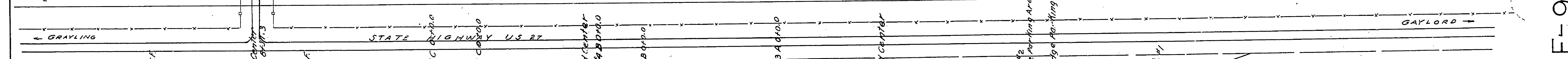
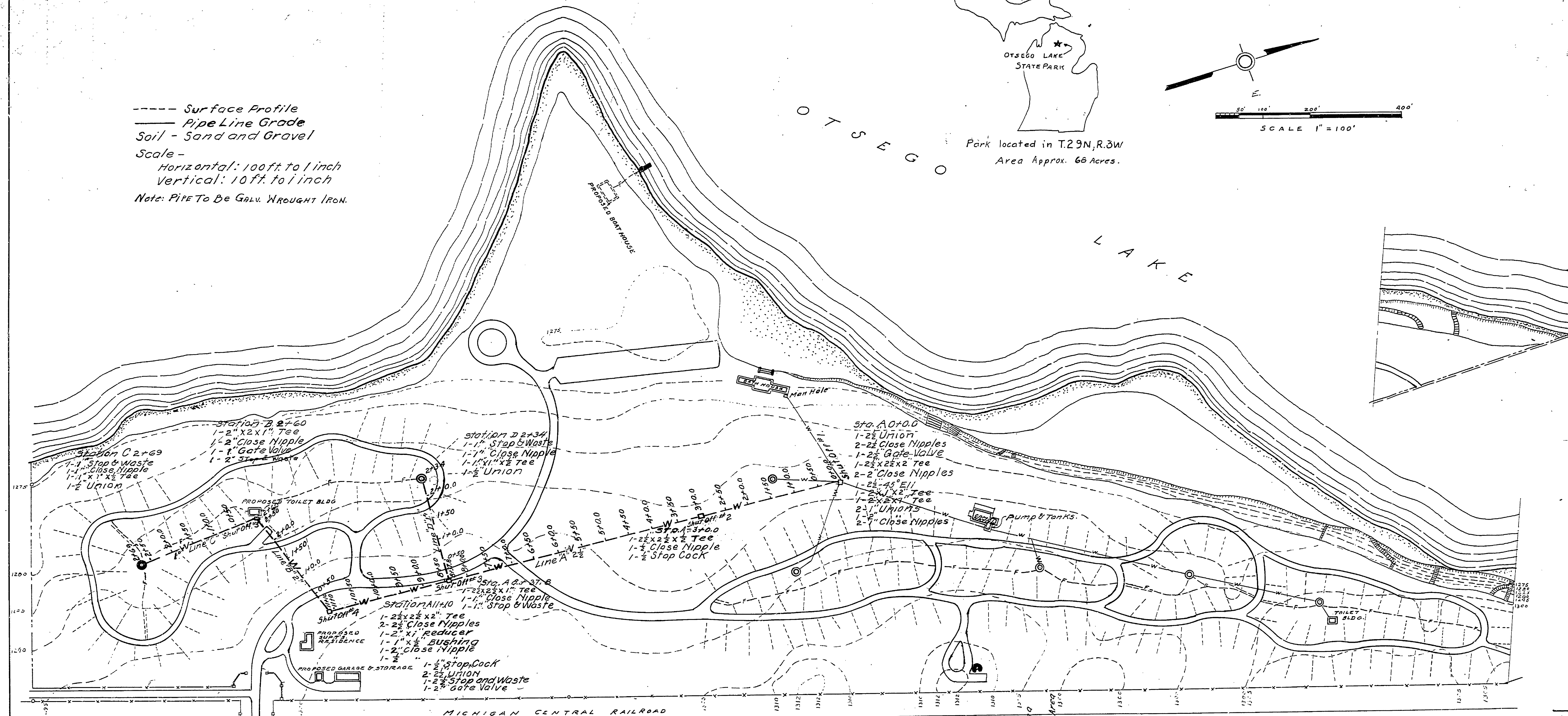
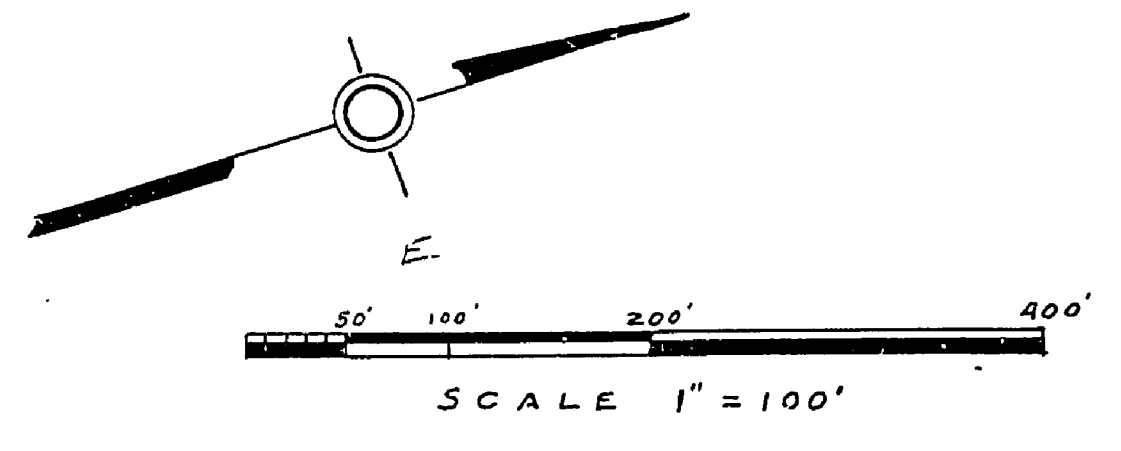


- - - Surface Profile
 — Pipe Line Grade
 Soil - Sand and Gravel
 Scale -
 Horizontal: 100 ft. to 1 inch
 Vertical: 10 ft. to 1 inch
 Note: PIPE TO BE GALV. WROUGHT IRON.



Park located in T.29N, R.3W
 Area Approx. 66 Acres.



UNITED STATES
 DEPARTMENT OF THE INTERIOR
 NATIONAL PARK SERVICE
 COOPERATING WITH
 MICHIGAN
 DEPARTMENT OF CONSERVATION

OTSEGO LAKE STATE PARK
PIPE LINES

DRAWN BY: *A. E. Rhodes*
 DESIGNED BY: *A. E. Rhodes*
 CHECKED BY: *R. J. Williams*

PREPARED BY: *W. W. Winters* DATE: _____
 RECOMMENDED: _____ DATE: _____
 APPROVED: *Stanley M. Winters* NATIONAL PARK SERVICE DATE: 8/16/37

PLAN NO. *W-3016-37*
 SCALE: 1" = 100'
 GAMP DESIGNATION: *WANDERBILT SR. 15*
 DATE: 7-22-37

E-9