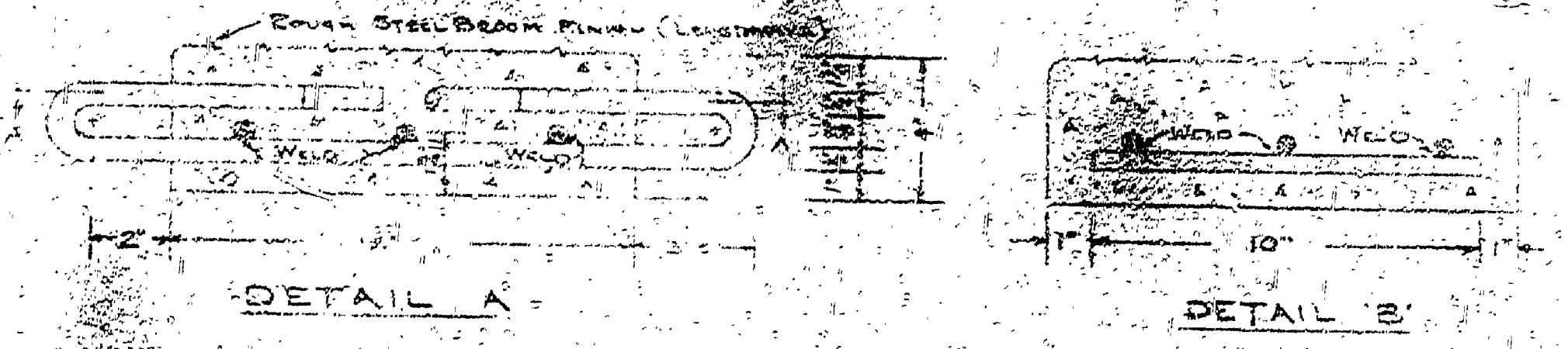
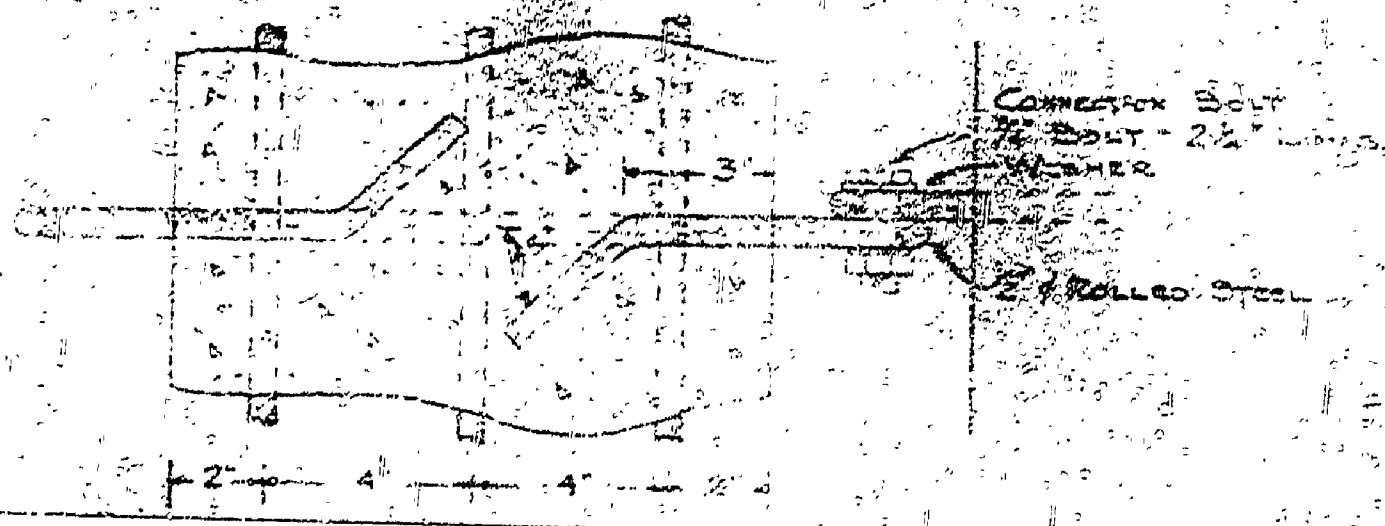


PRECAST CONCRETE PLAN  
SCALE 1/4\"/>



DETAIL A

DETAIL B



SECTION A-A

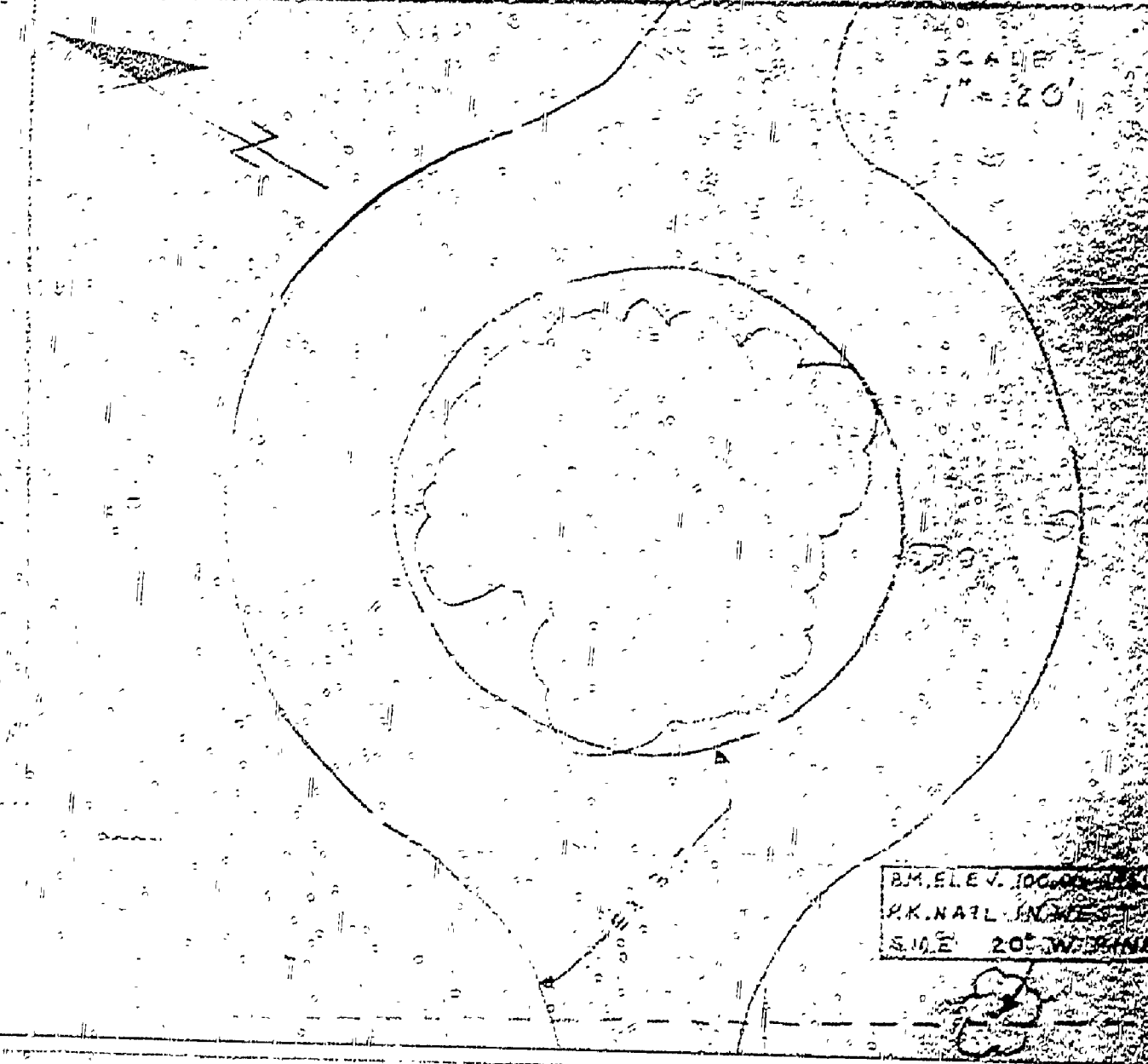
PLANK DETAILS  
SCALE 1/4\"/>

PERMITS:  
4-25-76

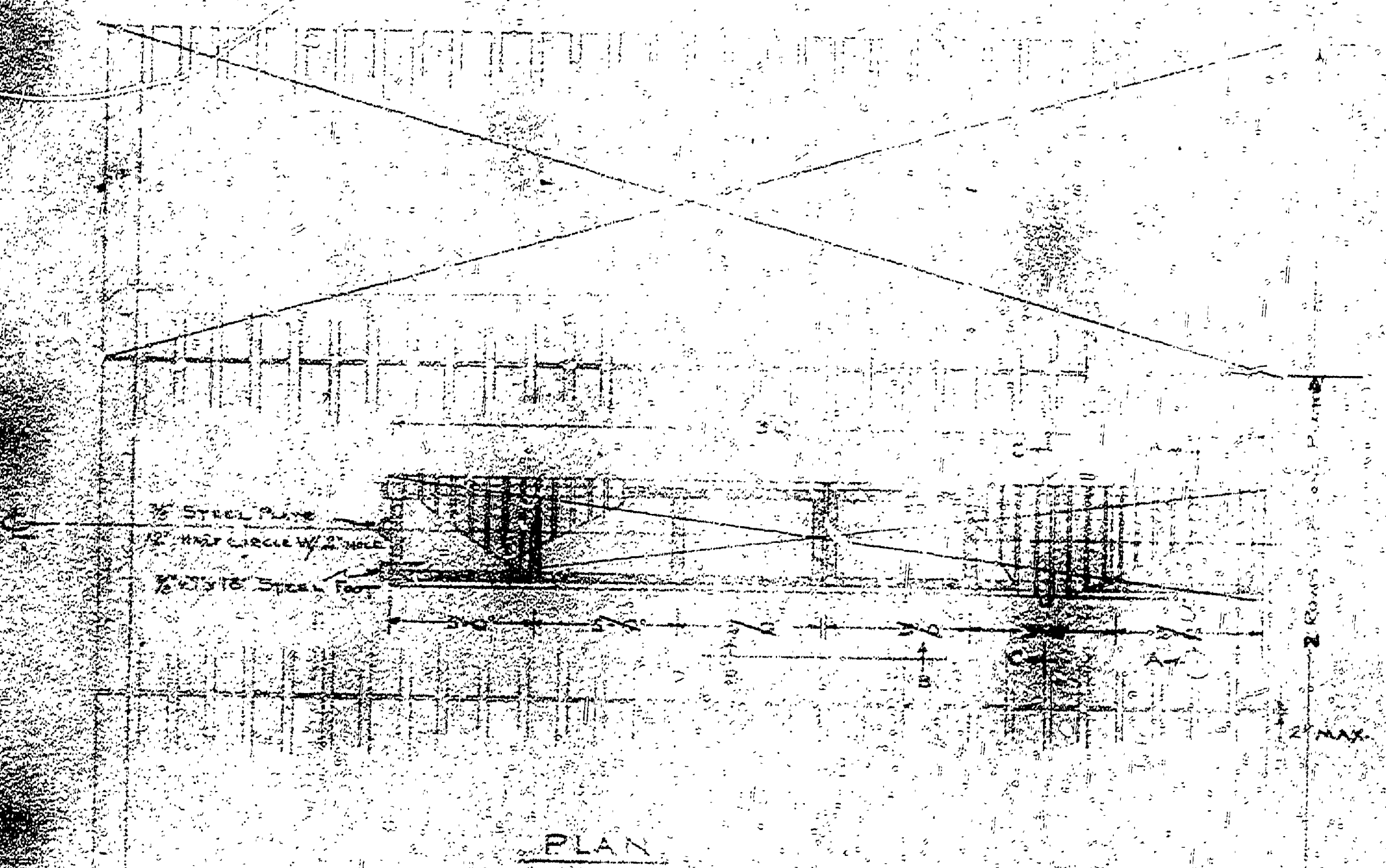
ACT NO. 34

DESIGN CONTROL  
INDICATION  
AS FOLLOWS  
SECTION 4202

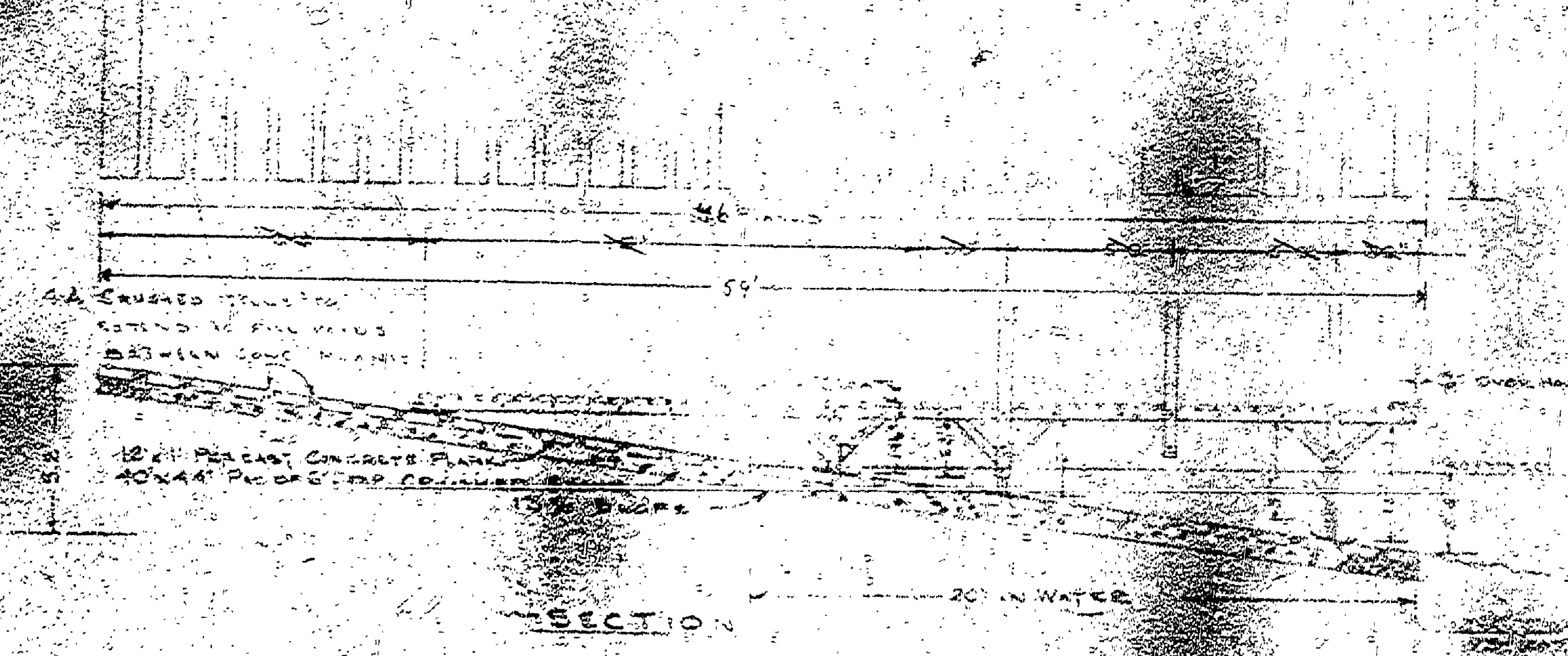
OTSEGO LAKE STATE PARK  
OTSEGO CO., OTSEGO LAKE  
T29N, R1W, S10E



SCALE  
1\"/>

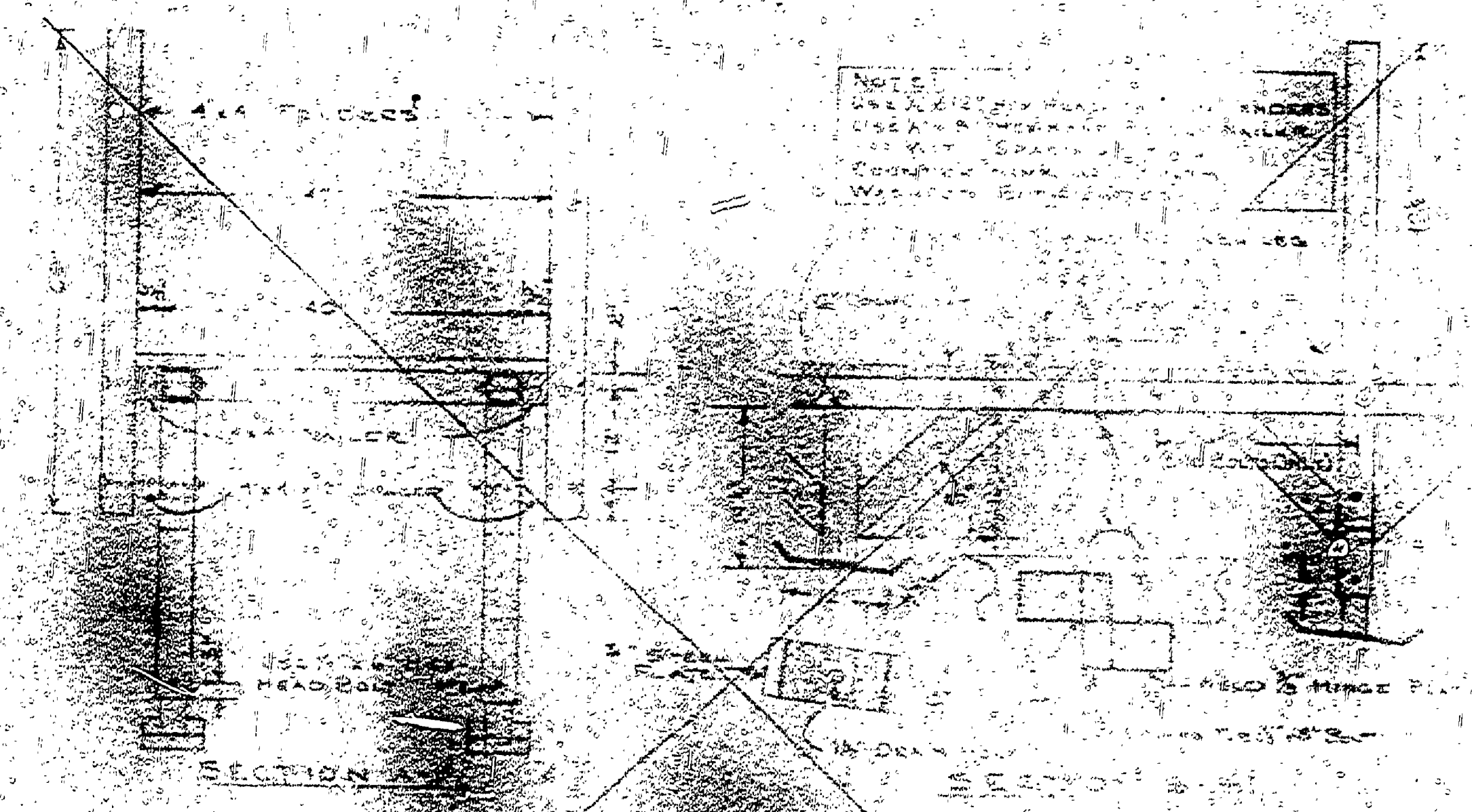


PLAN



SECTION

TYPICAL LAUNCH RAMP  
NOT TO SCALE



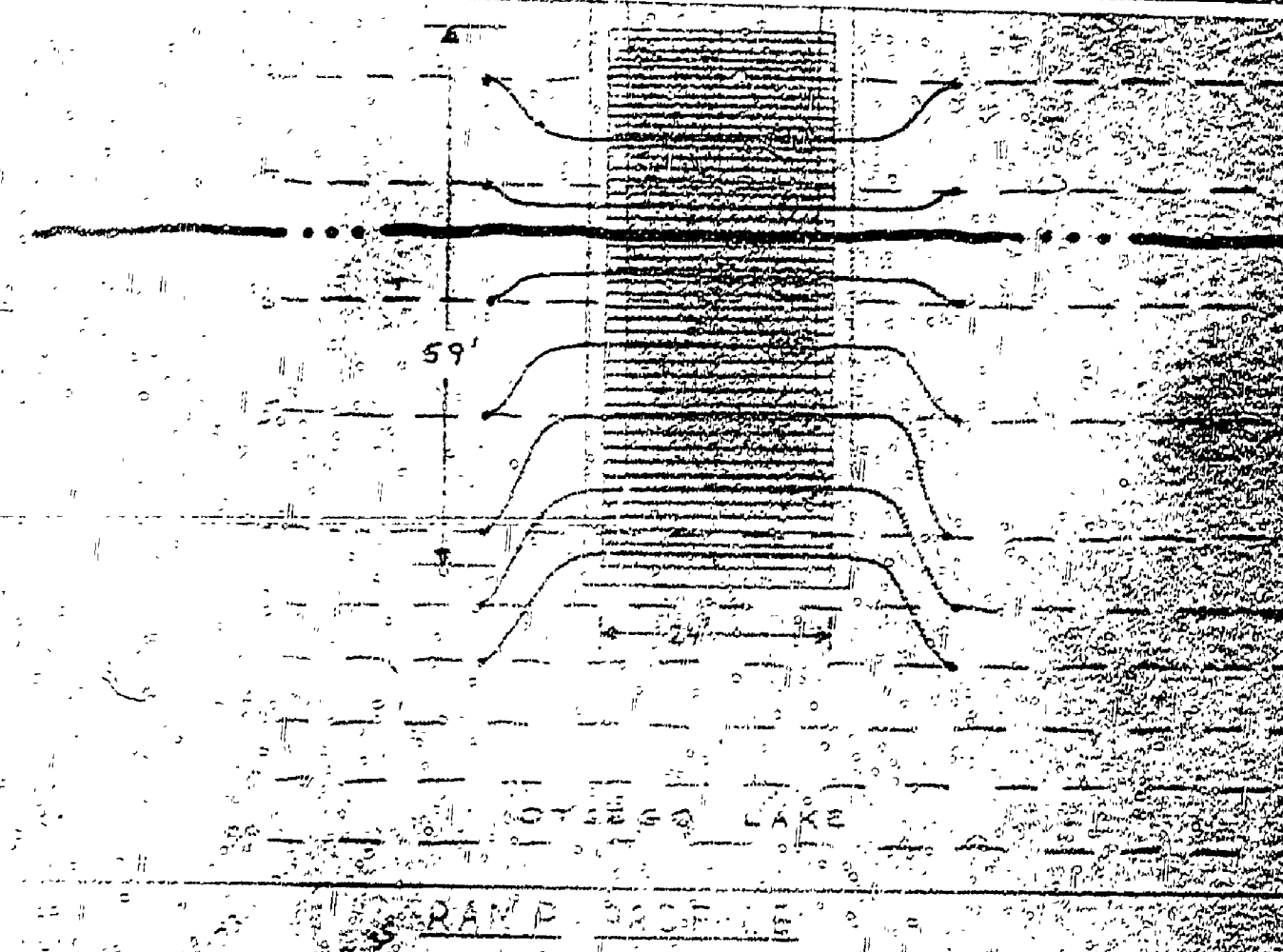
SECTION A-A

SECTION B-B

NOTE:  
USE 4\"/>

NOTE:  
CONCRETE SHALL BE  
COMPACTED TO  
A MINIMUM OF 95%  
RELATIVE HUMIDITY

SKID PIER DETAILS



OTSEGO LAKE

RAMP PROFILE

QUANTITIES

CONCRETE	10 CY
STEEL	40 CY
WOOD	30 CY
PRECAST CONCRETE PLANK	22 EA
TOTAL	40 CY

APPROVED

DESIGNED BY: [Signature] DATE: 1/25/76  
 CHECKED BY: [Signature] DATE: 1/25/76  
 PERKINS DIVISION  
 REVIEWED BY: [Signature] DATE: 1/25/76  
 APPROVED BY: [Signature] DATE: 1/25/76  
 CHIEF, PARKS DIVISION

DESIGNED BY: [Signature]	APPROVED BY: [Signature]
DRAWN BY: [Signature]	CHECKED BY: [Signature]
DATE: 1/25/76	DATE: 1/25/76

STANDARD LAUNCH RAMP AND  
SKID PIER  
FOR LAUNCH RAMP

SHEET NO. 1	OF 1
DATE: 1/25/76	SCALE: 1\"/>