

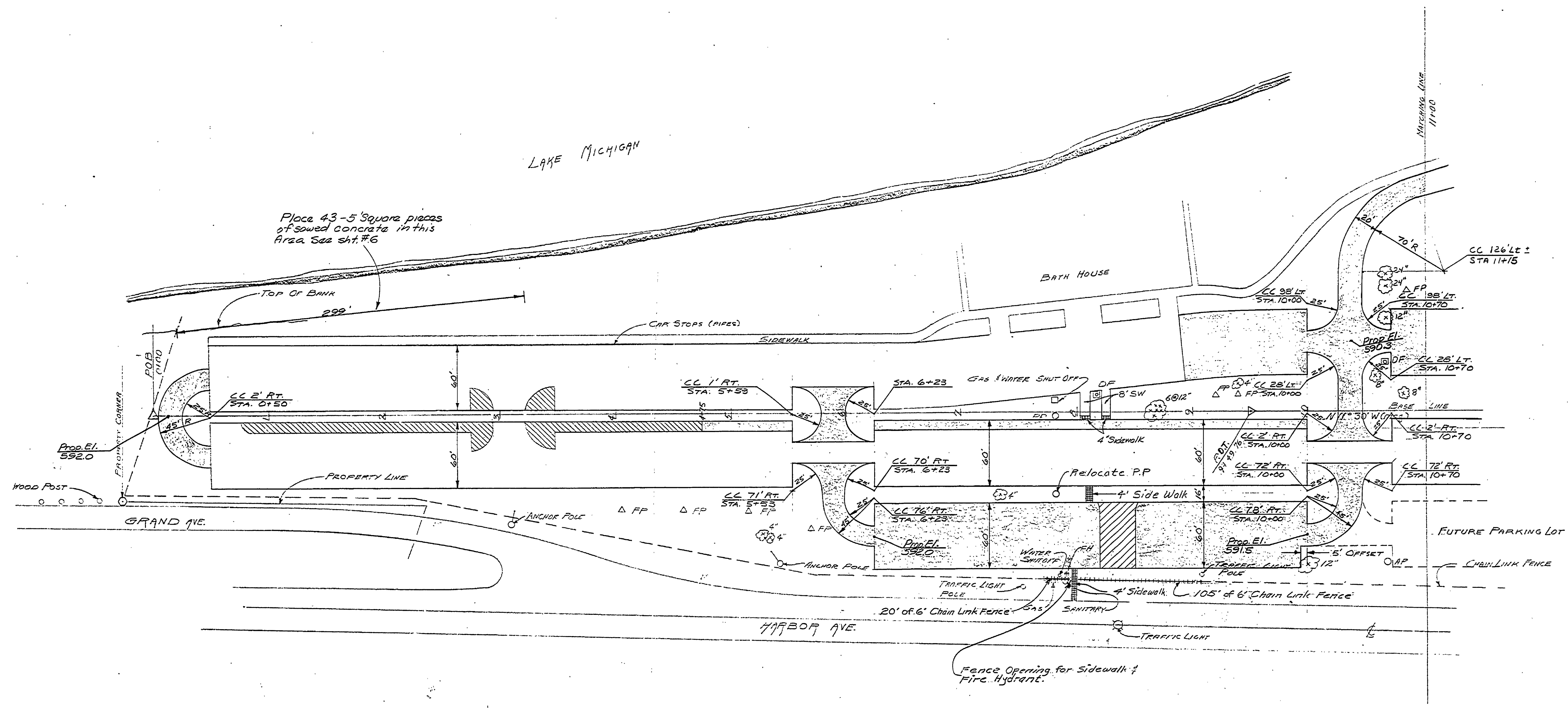
SCALE: 1" = 50'

WITNESSES

POB 3/4" Iron Pipe Flush With Ground
 S11°30'E 34', Face of Chain Link Fence
 S47°W 6.4' E of 8th Fence Post From SE Corner
 S47°30'E 5.5' E of 7th Fence Post From SE Corner
 S32°W, 35.20' Outdoor Grill
 P.O.T. Sta 9+49.76, 3/4" Iron Pipe Flush With Ground
 S43°W, 29.52', 5" Maple Spike & Tag
 S58°W, 118.50', Light Pole, Spike & Tag
 N65°W, 128.59', 16" Cottonwood, Spike & Tag

BENCH MARK DATA

BM#11, A Chiseled "D" On E. Edge of Sidewalk
 Along E. Edge of Bath House, In Line With
 N. Edge of Building Elev. 530.14
 BM#14, W Bolt In Hydrant Cap At Park Entrance
 Harbor Ave. Elev. 534.36



Place 43-5 Square pieces of sawed concrete in this Area See sht. #6

QUANTITIES THIS SHEET

Bituminous Aggregate 4.11 175#/100'	5182 yd ³
Bituminous " " 100#/100'	200 yd ³
Concrete, 5" Uniform	500 yd ³
Concrete Sidewalk, 4" Uniform	26 yd ³
Bituminous Bond Coat (0.15 Gal/yd ²)	30 Gal.
23-A Gravel Base Course, 8" Depth	5920 yd ³
6" Chain Link Fence	125 lin. ft.
Bituminous Prime Coat (0.25 Gal/yd ²)	1339 Gal.

- NEW BITUMINOUS SURFACE 175#/SYD
- NEW BITUMINOUS OVER EXISTING PAVEMENT 100#/SYD
- NEW CONCRETE PAVEMENT 5" UNIFORM
- NEW CONCRETE SIDEWALK 4" UNIFORM

SURVEYED BY	DRAWN BY: LEE N. SMITH	NO.	DATE	BY	REVISIONS	NO.	DATE	BY	REVISIONS	MICHIGAN DEPARTMENT OF CONSERVATION	NEW CONSTRUCTION	SHEET NO. 4 OF 7	GRANDHAVEN STATE PARK
DESIGNED BY	CHECKED BY	1.				3.				FOR PROJECT NO. 22-110-75-2499-061-124		SHEET 4 OF 7	PLAN NO. E-108
	DATE	2.				4.							