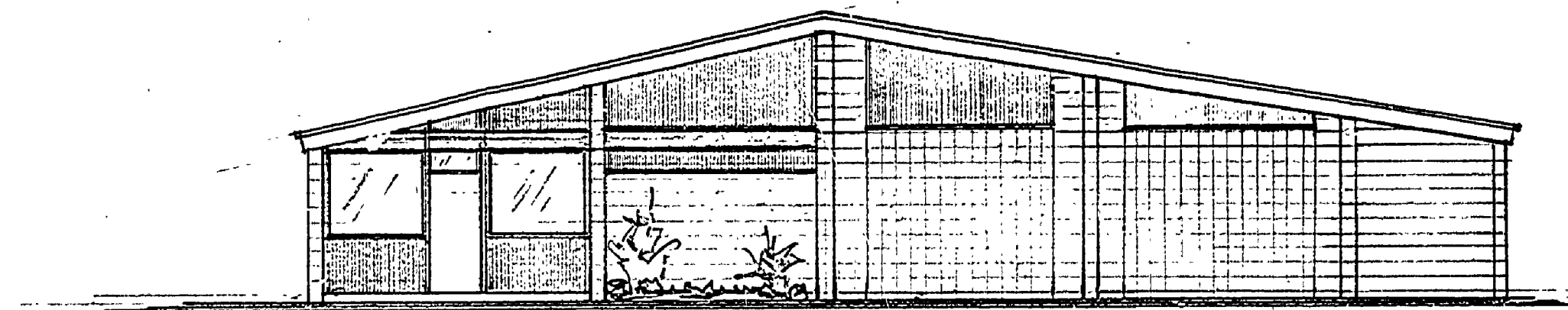
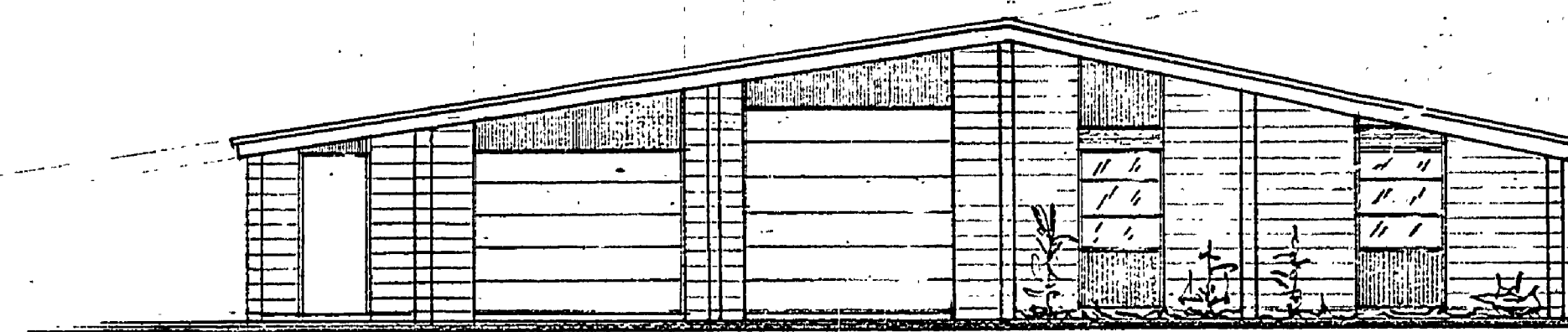


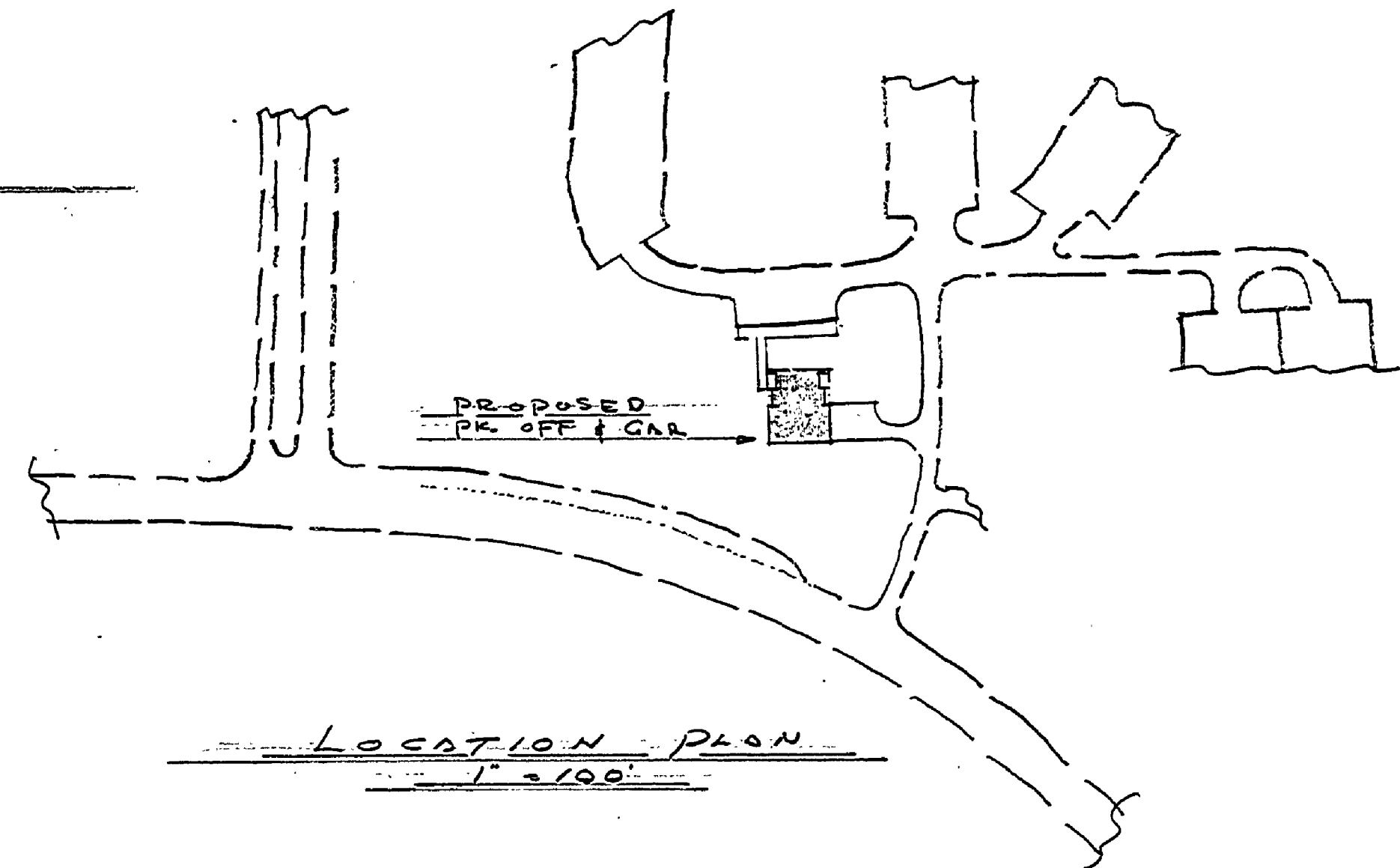
SECTION I-I  
1/8" = 1'-0"



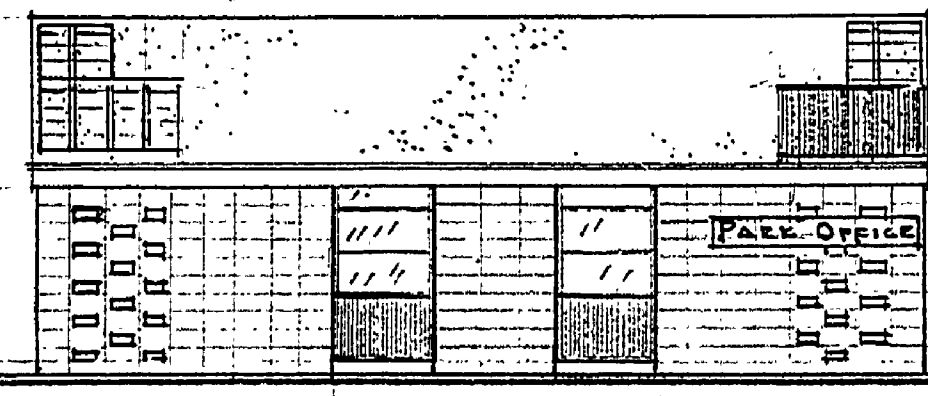
SOUTH ELEV.  
1/8" = 1'-0"



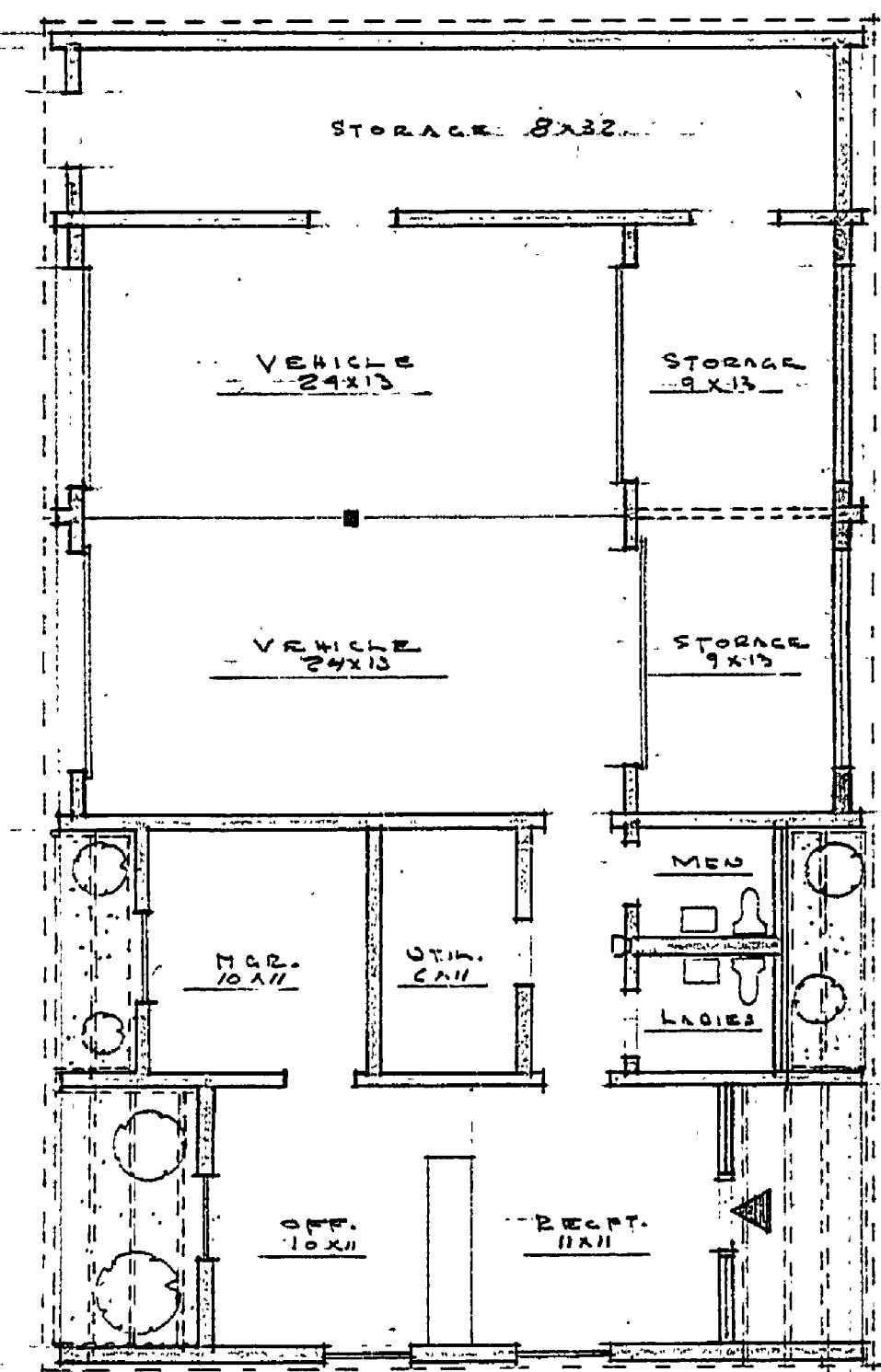
NORTH ELEV.  
1/8" = 1'-0"



LOCATION PLAN  
1" = 100'



WEST ELEV.  
1/8" = 1'-0"



FLOOR PLAN  
1/8" = 1'-0"

CONSTRUCTION OUTLINE		BUILDING COMMITTEE APPROVAL	
1. CONC. FND. & FLOORS	RECOMMENDED BY: <i>H.C. Maclean</i>	DATE: 2-6-69	
2. CONC. MASONRY WALLS	FOR APPROVAL: <i>W. U. G.</i>	DATE: 2-6-69	
3. WOOD ROOF JOISTS & DECK GRAVEL ROOF	RECOMMENDED BY: <i>E.J. Pichel</i>	DATE: 2-12-69	
4. ALUM. DR. FRAMES & SASH	FOR APPROVAL: <i>E.J. Pichel</i>	DATE: 2-12-69	
5. TRANS. VINYL PANELS	SECTION APPROVAL BY: <i>R.O. Dodge</i>	DATE: 2-19-69	
	ENGINEERING SECTION APPROVED BY: <i>H.C. Maclean</i>	DATE: 2-21-69	

SURVEYED BY	DRAWN BY	1-69	NO.	DATE	BY	REVISIONS	NO.	DATE	BY	REVISIONS
	<i>W. U. G.</i>		1.				3.			
DESIGNED BY	CHECKED BY		2.				4.			

MICHIGAN DEPARTMENT OF CONSERVATION  
GRAND HAVEN ST. PARK  
PARK OFFICE & GARAGE  
PRELIMINARY PLAN

SHEET NO. OF  
FOR PROJECT NO. PA-108-5824-300-001  
SHEET 1 OF 1 PLAN NO. A-106