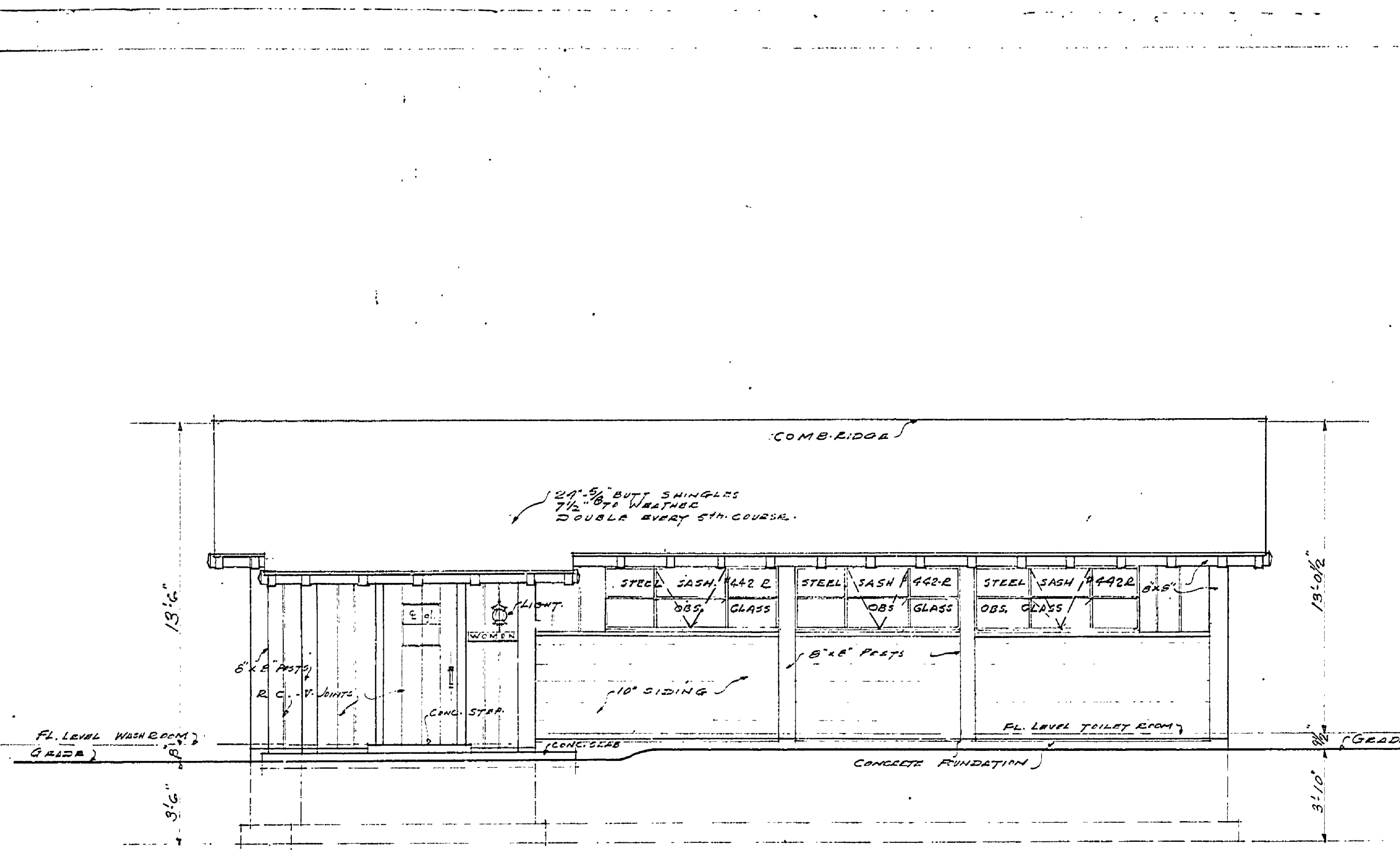
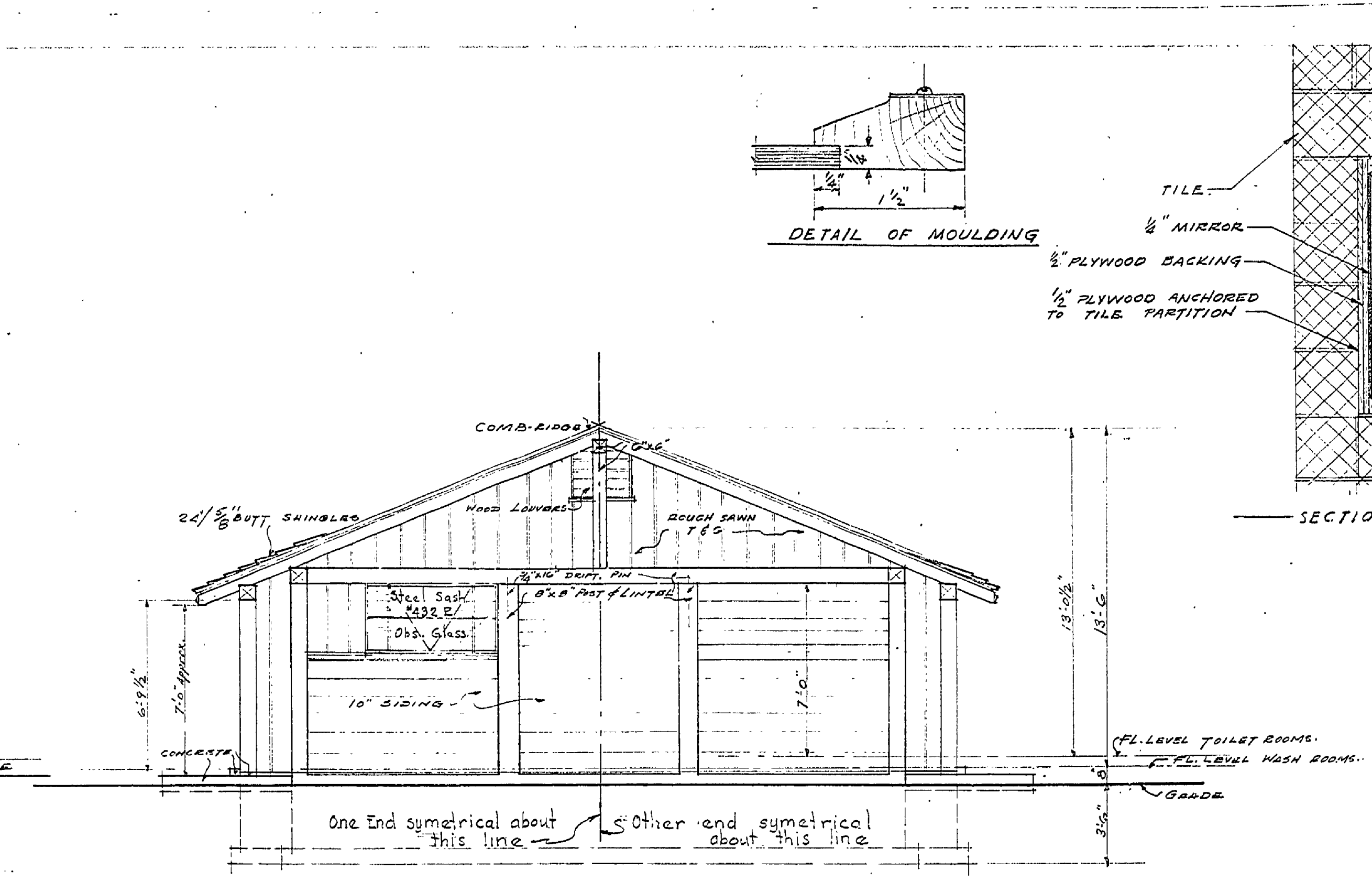


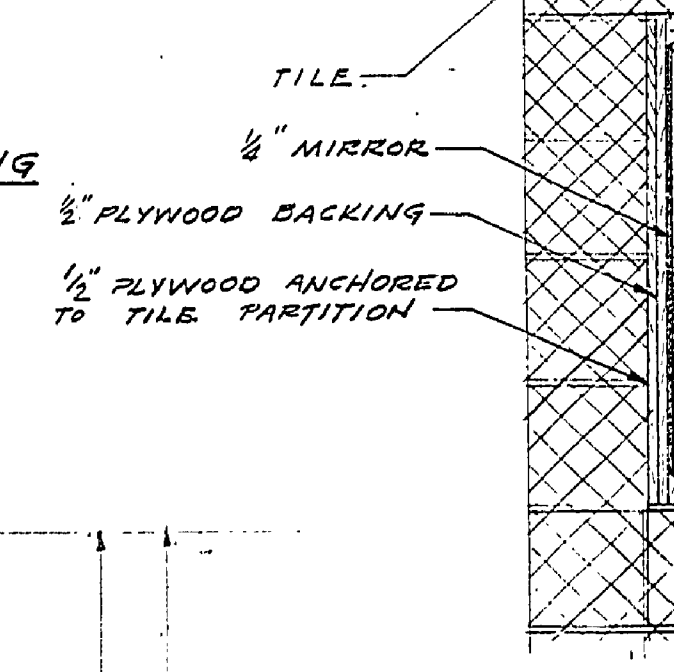
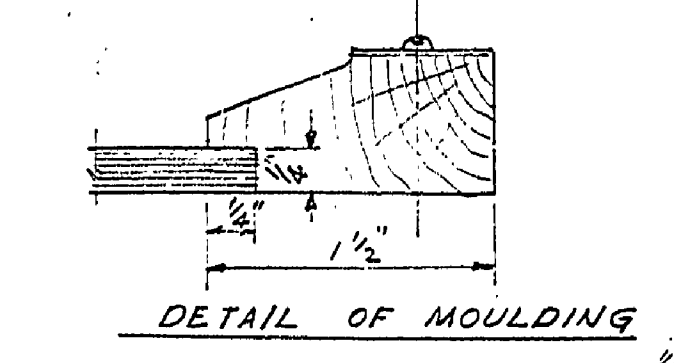
NO.	DATE	BY	REVISIONS
1	3-14-10	GM	Revised for Reconstruction
2			
3			
4			
5			
6			



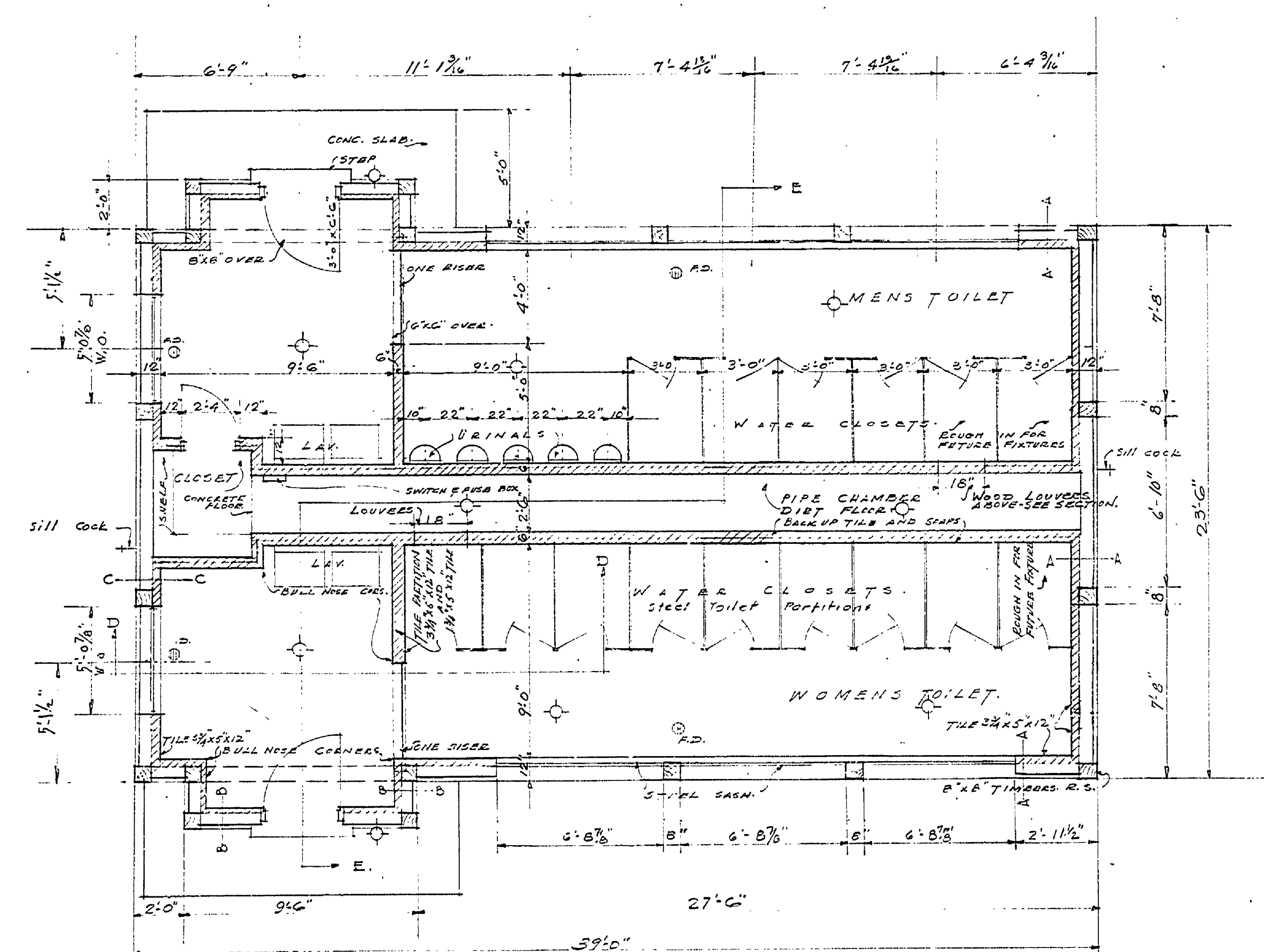
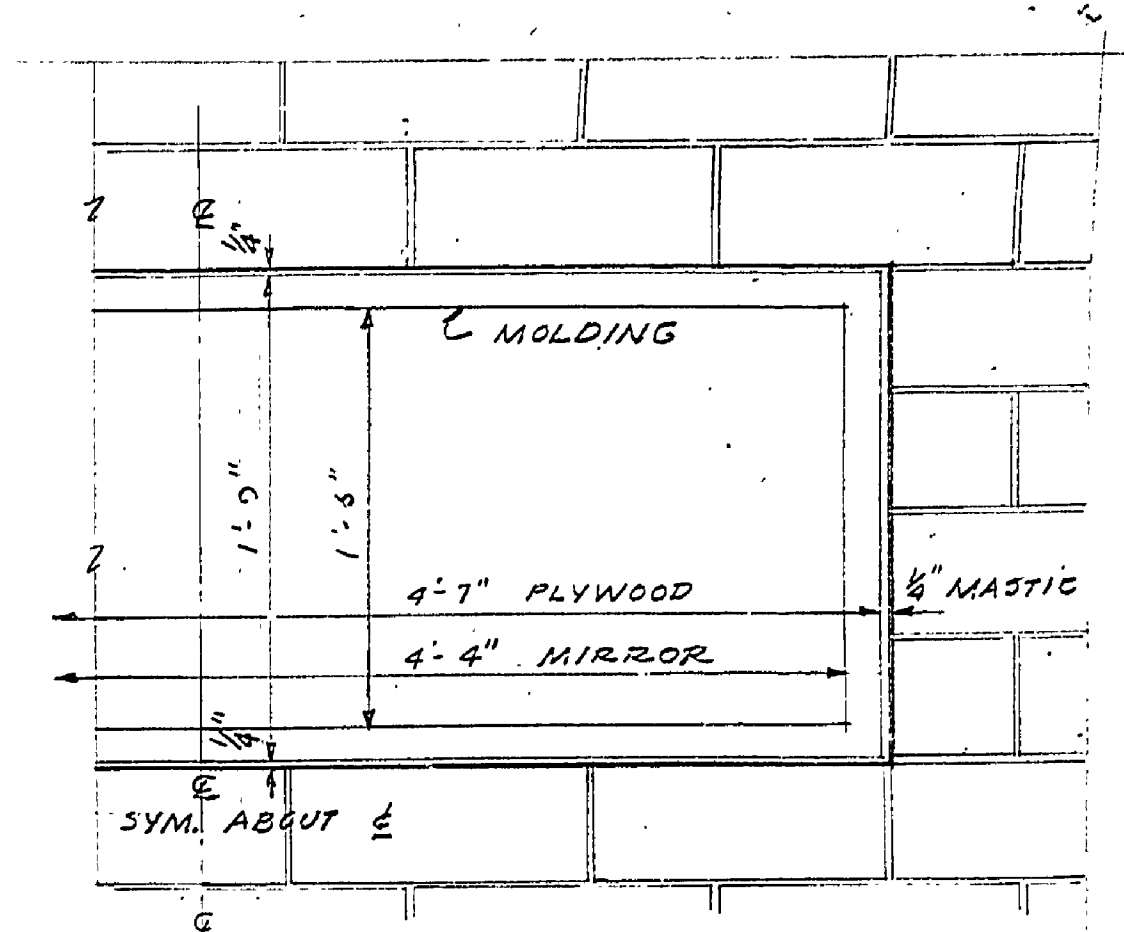
FRONT ELEVATION  
SCALE 1/4" = 1'-0"



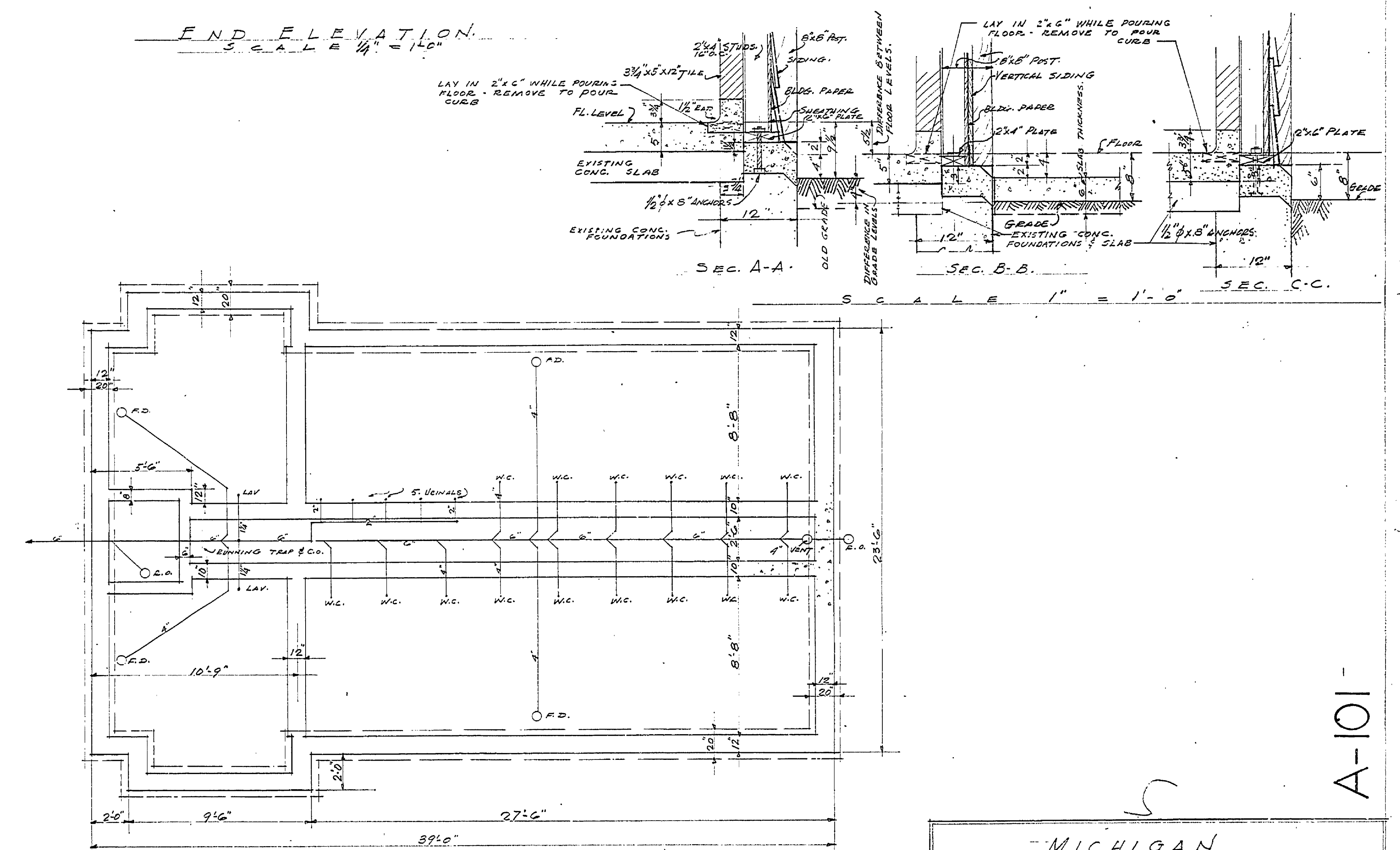
END ELEVATION  
SCALE 1/4" = 1'-0"



MIRROR DETAIL  
SCALE: 1/2" = 1'-0"



FLOOR PLAN  
SCALE 1/4" = 1'-0"



FOUNDATION AND DRAINAGE PLAN  
SCALE 1/4" = 1'-0"

MICHIGAN  
DEPARTMENT OF CONSERVATION  
PARKS DIVISION.

DRAWN BY C.J. RUDINE	TRAVERSE CITY STATE PARK	SHEET 25 B 2
DESIGNED BY C.J. RUDINE	TOILET BUILDING No. 2	SCALE 25 SHINGLES
CHECKED		DATE 7/13/37

APPROVED BY: CHIEF - PARKS & RECREATION DIV. DATE: \_\_\_\_\_

A-101