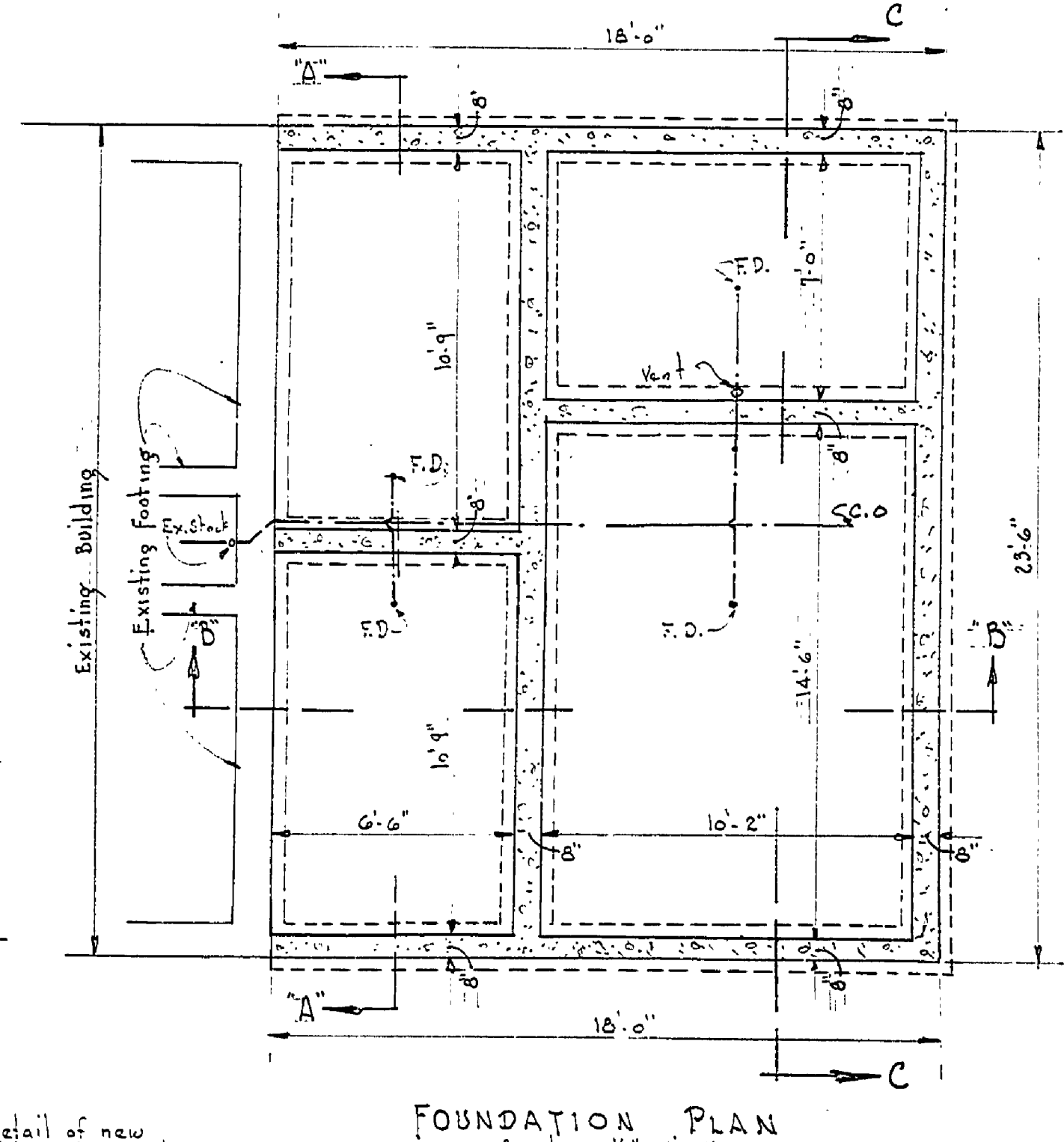
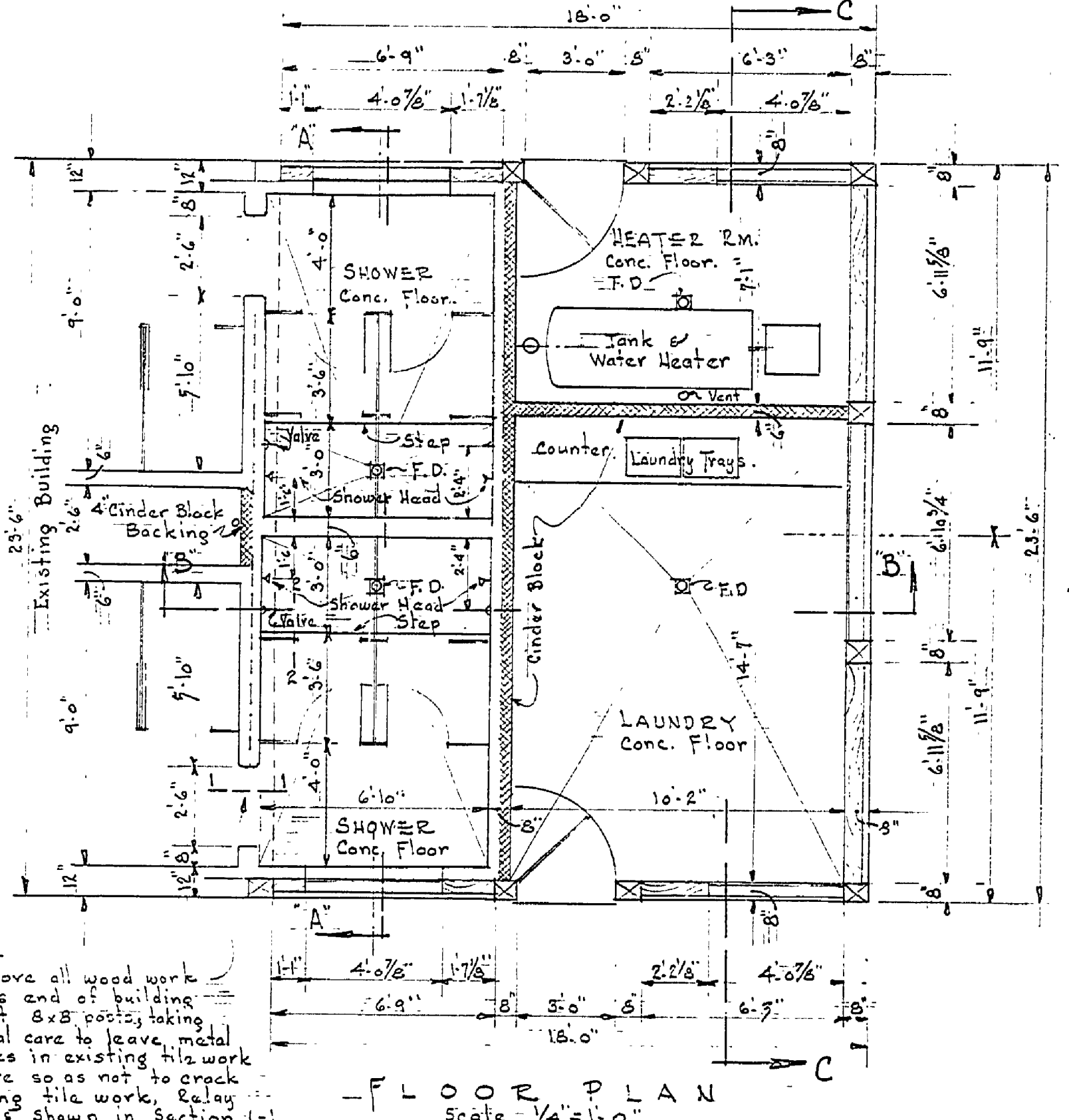
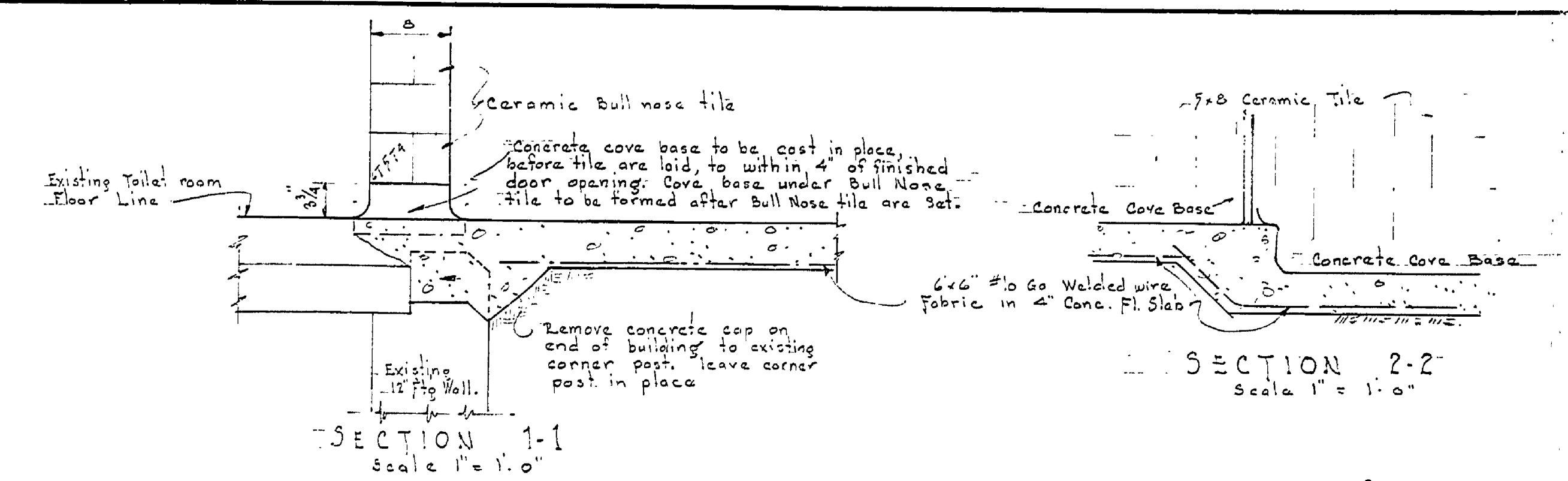
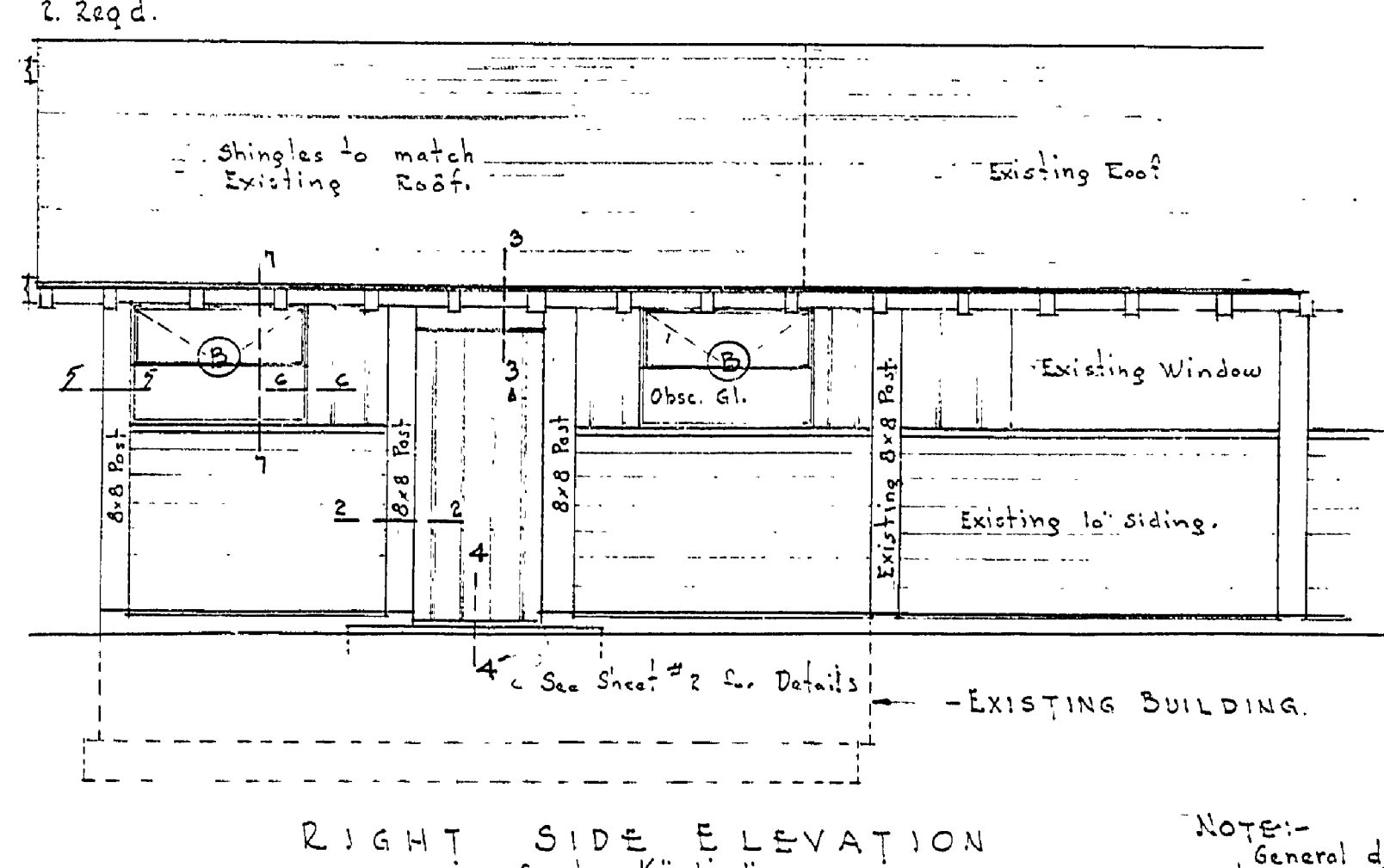
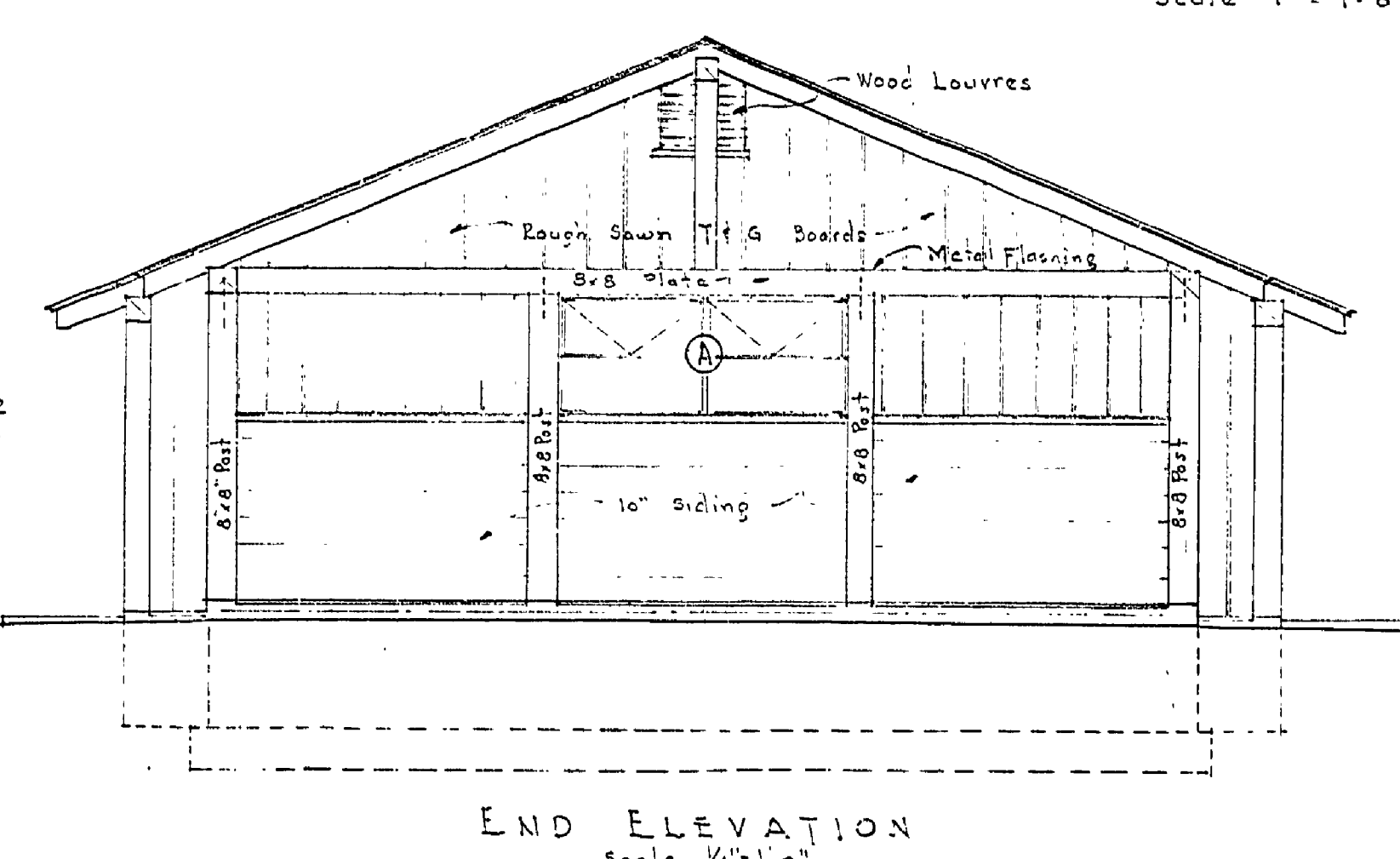
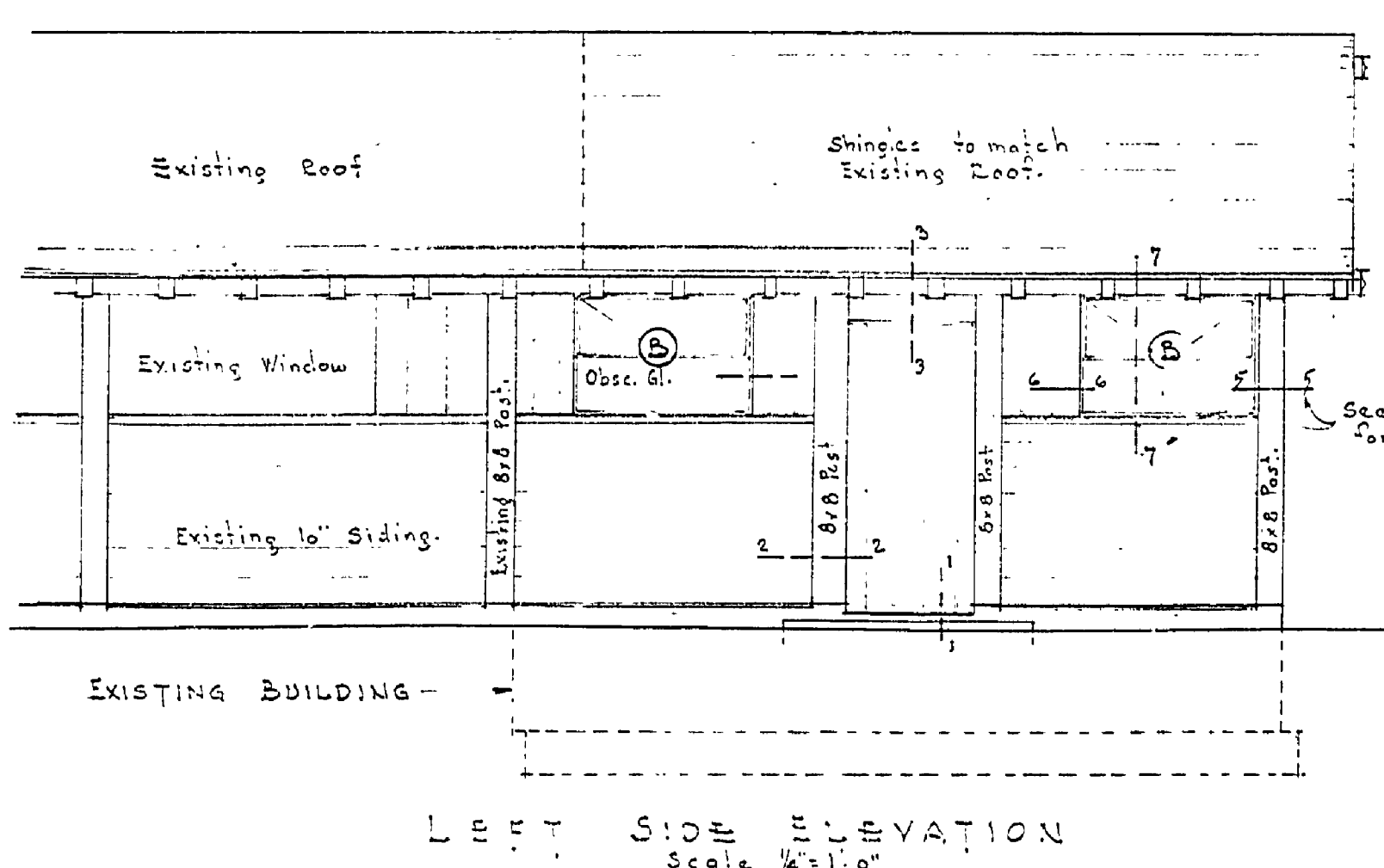
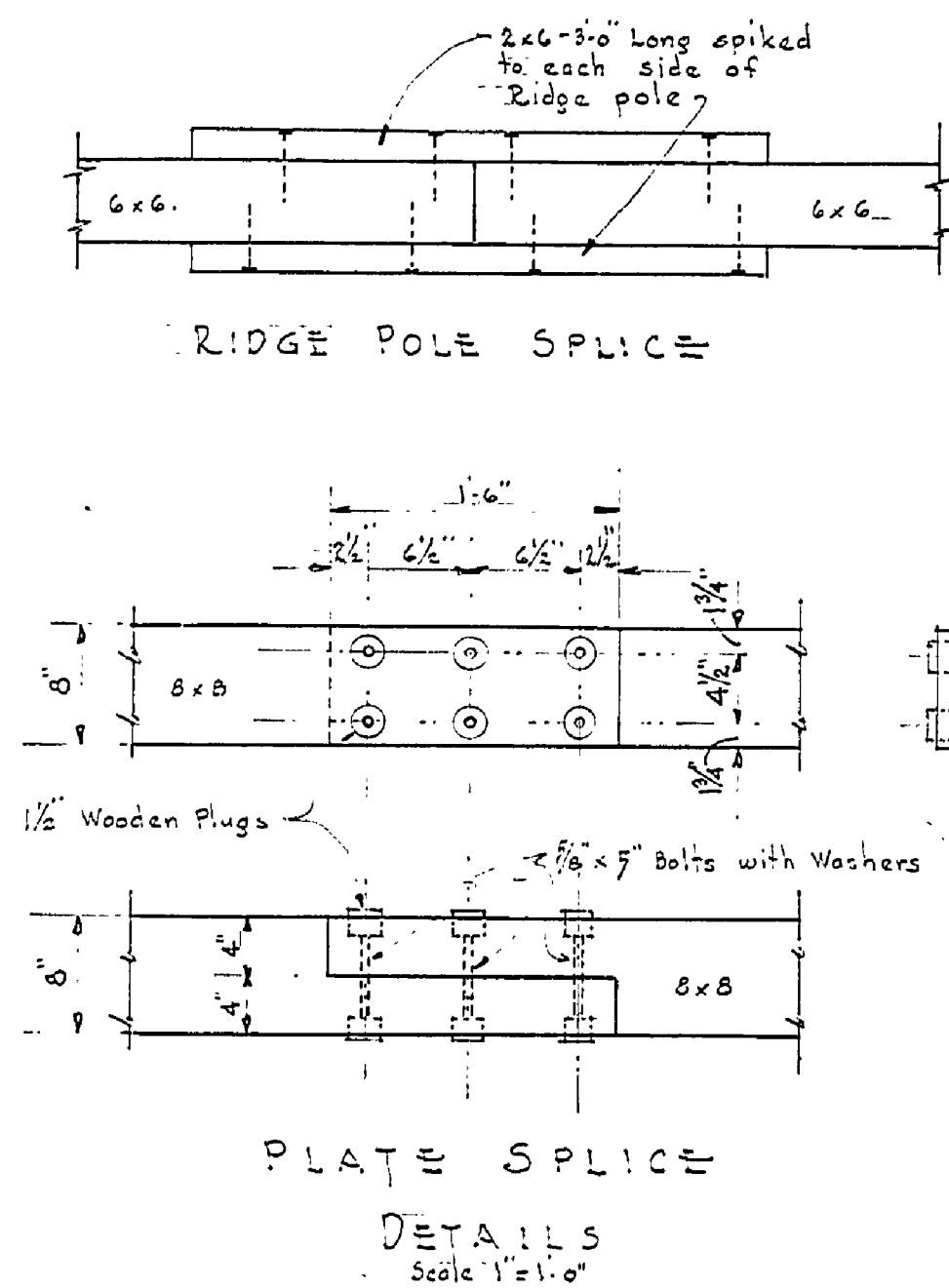
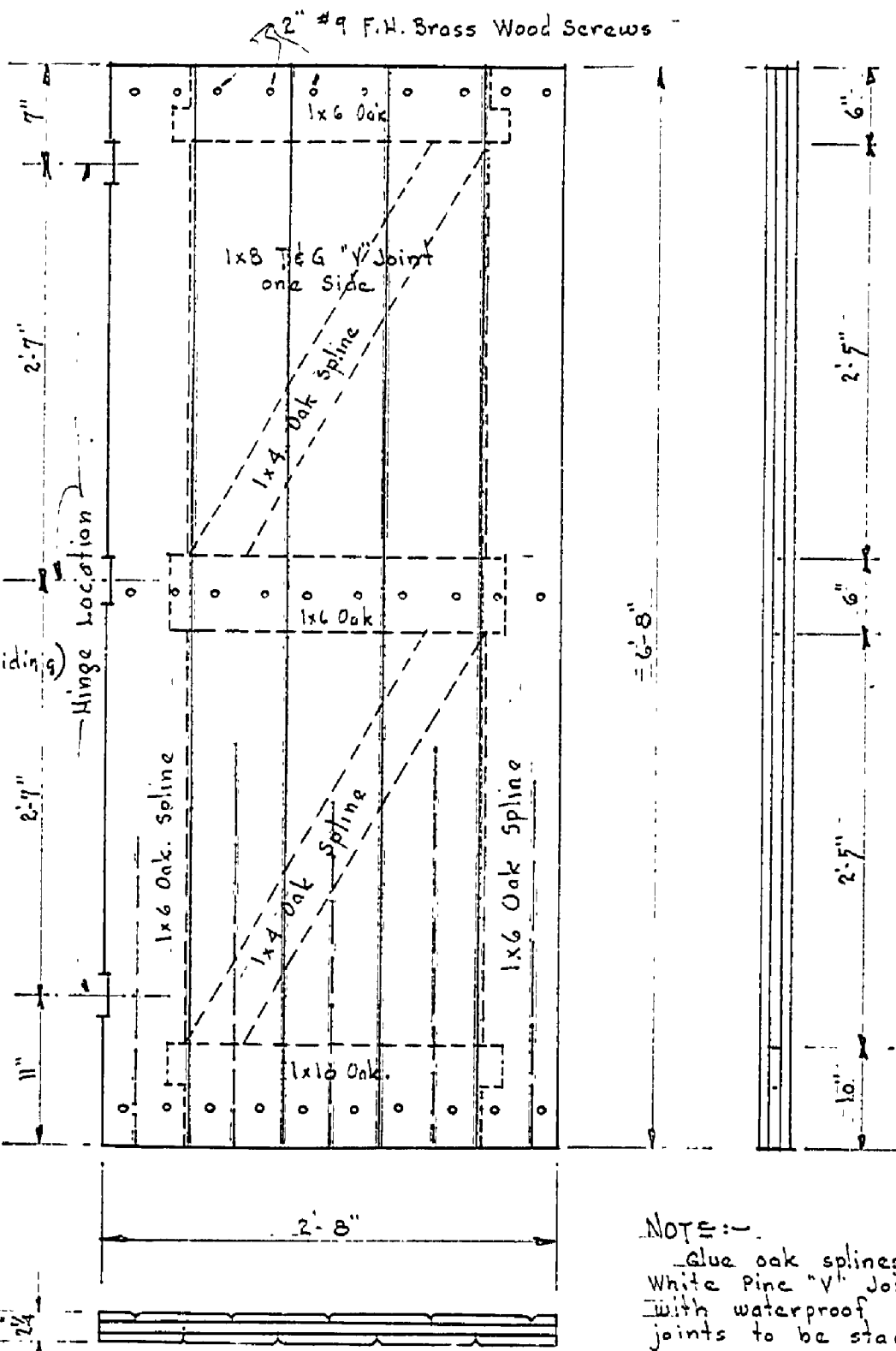
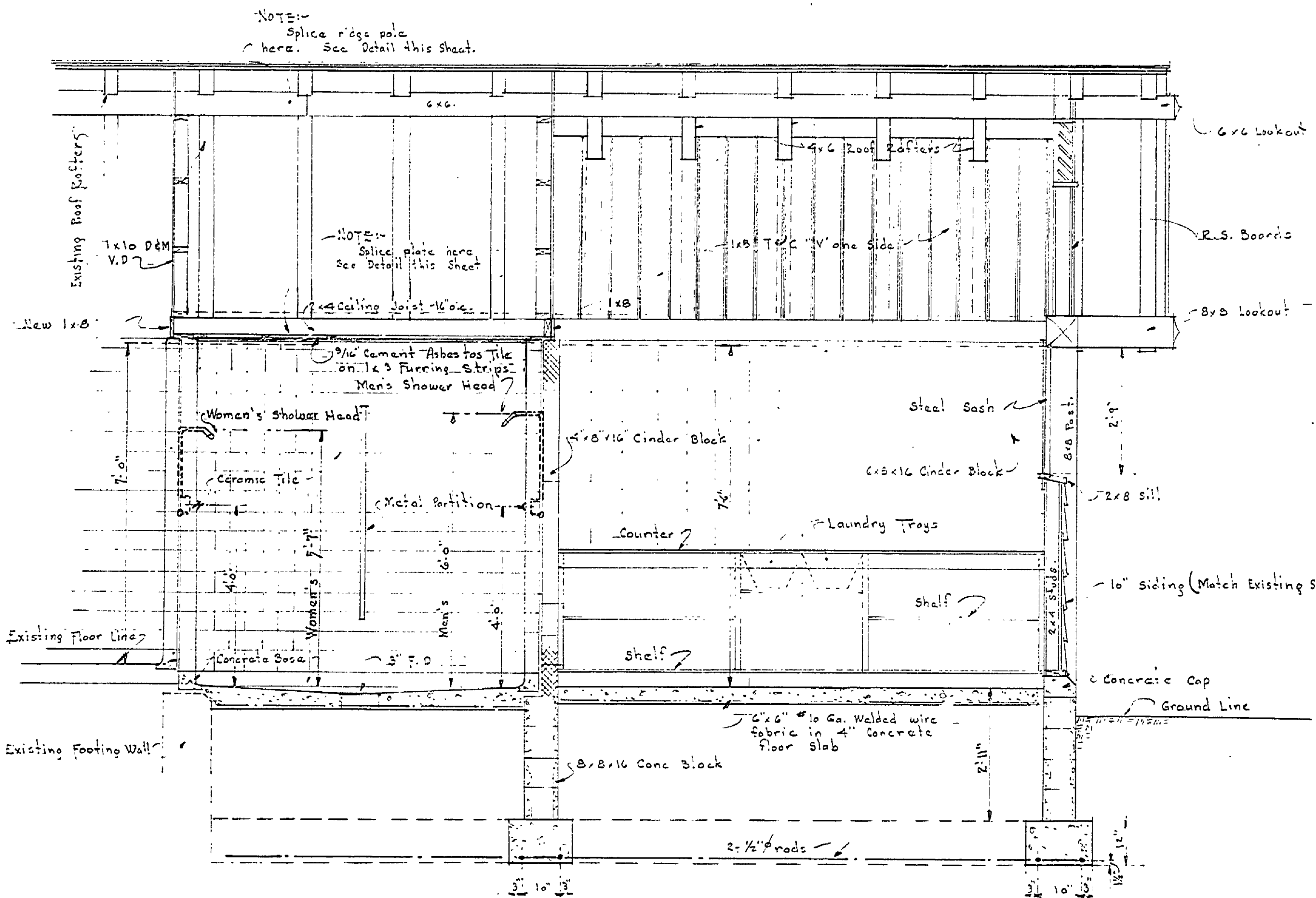
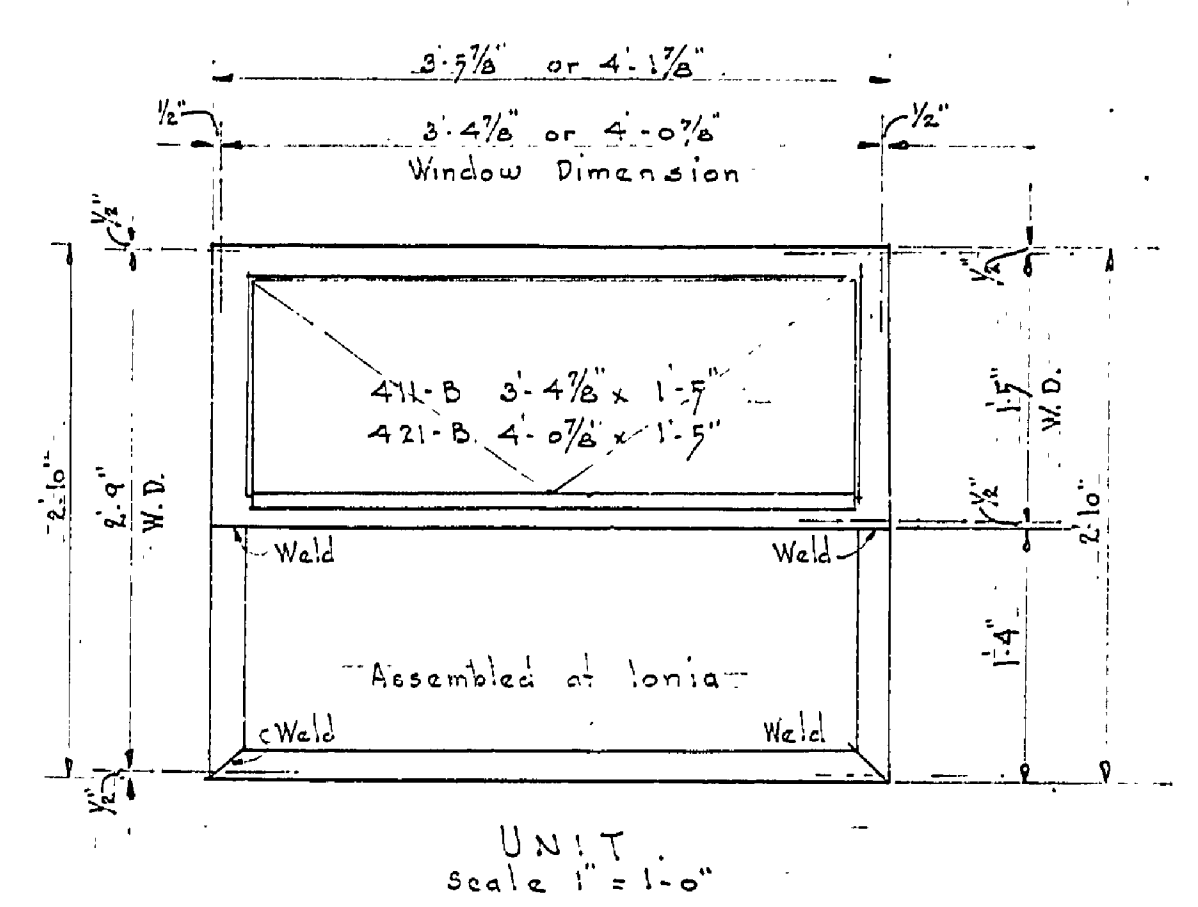
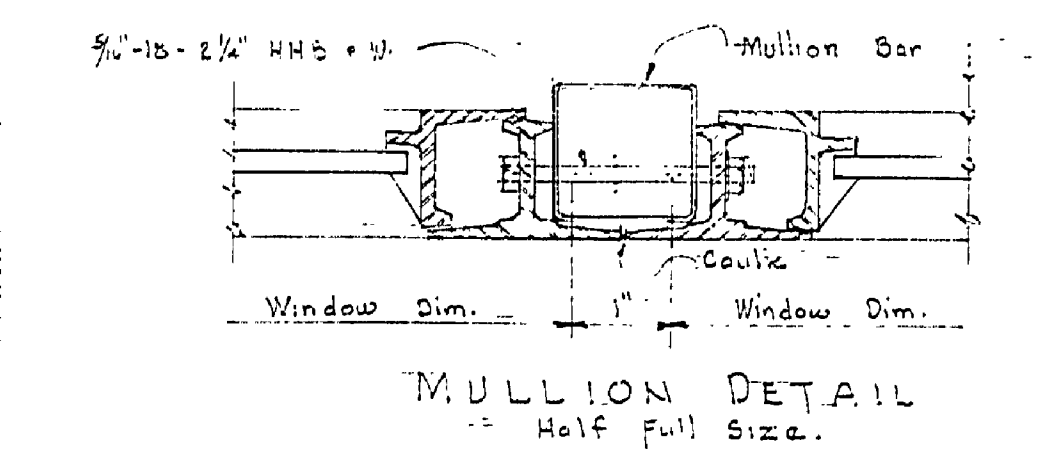


DRAWN BY J.W. Fish	CHECKED BY J.W. Fish	REVIEWED BY SECTIONS		DATE	APPROVED BY	NO.	DATE	BY	REVISIONS
		ARCHITECTURAL	ENGINEERING	LANDSCAPE					
TRACED BY J.W. Fish		ASSISTANT CHIEF IN CHARGE		DATE		1			4
CHECKED BY P.T.G.		OF DESIGN				2			5
DATE						3			6

MK	NO. OF UNITS	WIDTH	HEIGHT	MULLIONS	UPPER VENTED	LOWER FIXED	SCREENS	REMARKS
A	2	41-1/2"	41-1/2"	2				
B	4	41-1/2"	41-1/2"	2				



NOTE:-
Glue oak spines to 1x8 T&G White Pine V Jointed boards with waterproof glue. All joints to be staggered.

NOTE:-
Remove all wood work at this end of building except 8x8 posts taking special care to leave metal wall ties in existing tile work and care so as not to crack existing tile work. Relay tile as shown in Section 1-1.

NOTE:-
General detail of new portion of building to match existing building.