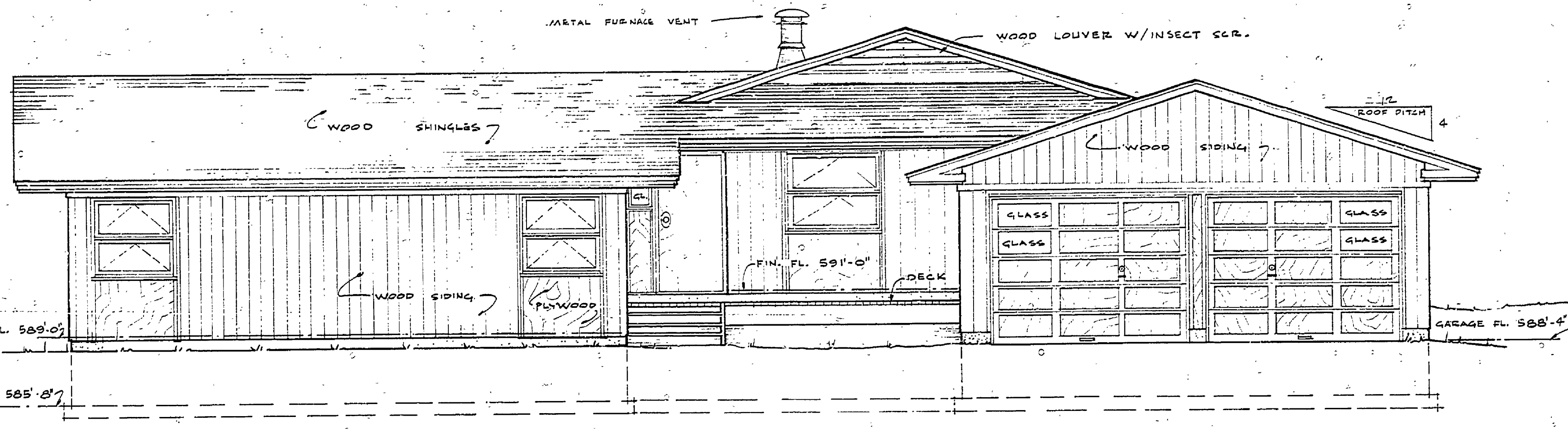
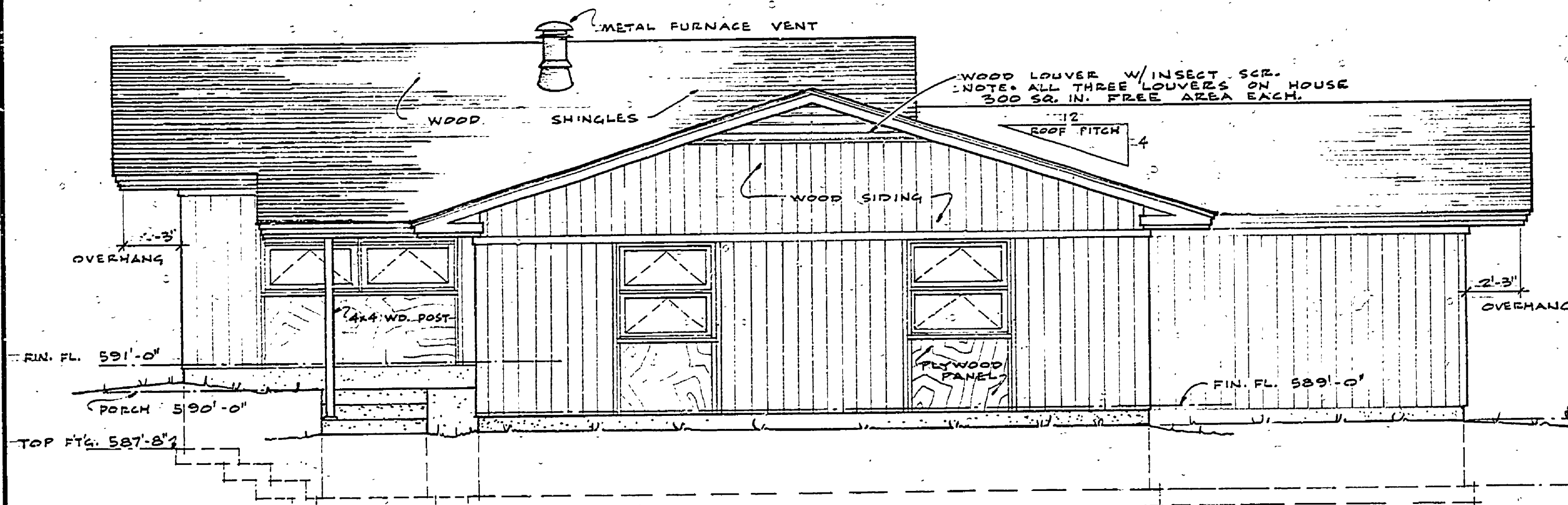


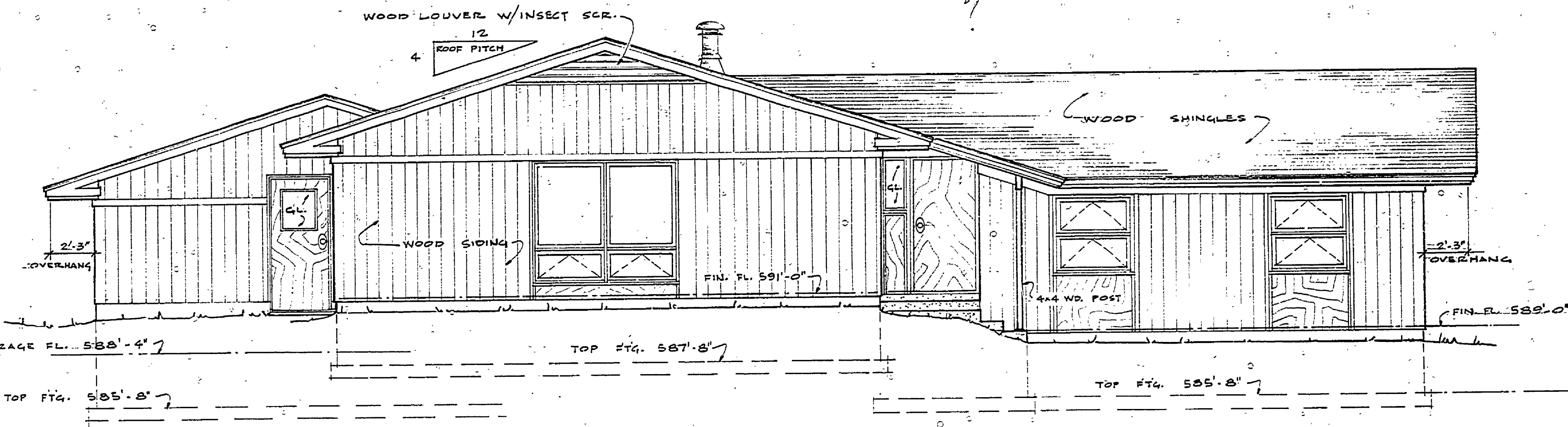
N. E. ELEVATION



S. E. ELEVATION



S. W. ELEVATION



N. W. ELEVATION

NOTE: SCALE OF ELEVATIONS = 1/4" = 1'-0"

SURVEYED BY		DRAWN BY <i>William C. Pines</i>		4/00	NO.	DATE	BY	REVISIONS	NO.	DATE	BY	REVISIONS	MICHIGAN DEPARTMENT OF CONSERVATION	TRAVERSE CITY STATE PARK • MANAGER'S RESIDENCE •	SHEET NO. 3 OF 6	FOR PROJECT NO. PR90-258-1104-300-956	SHEET 3 OF 6	PLAN NO. A-104
DESIGNED BY		CHECKED BY		DATE	1.				3.									
					2.				4.									