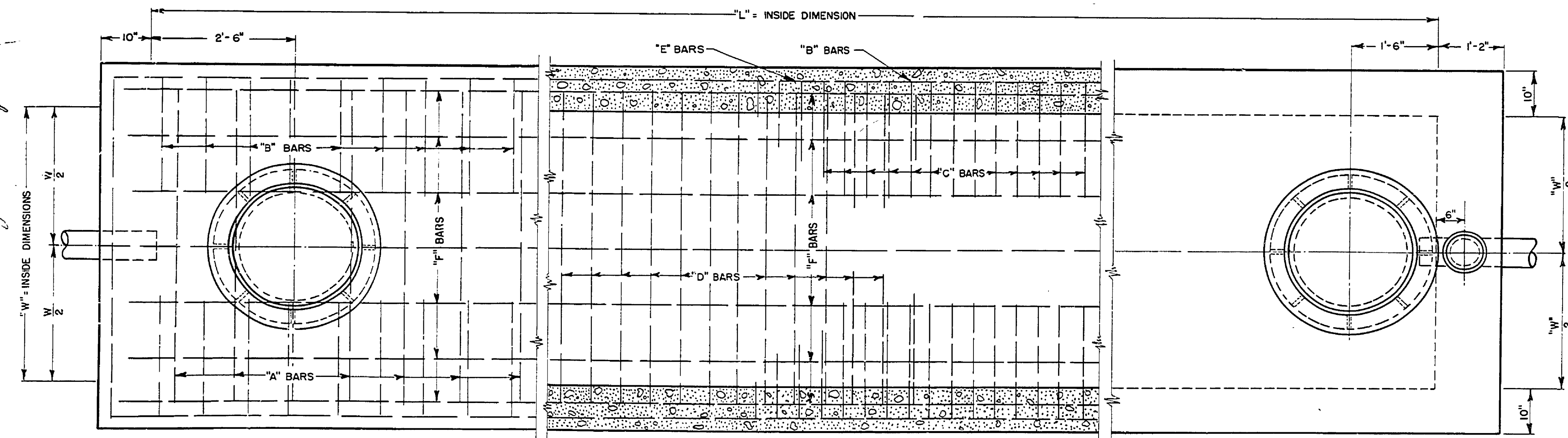
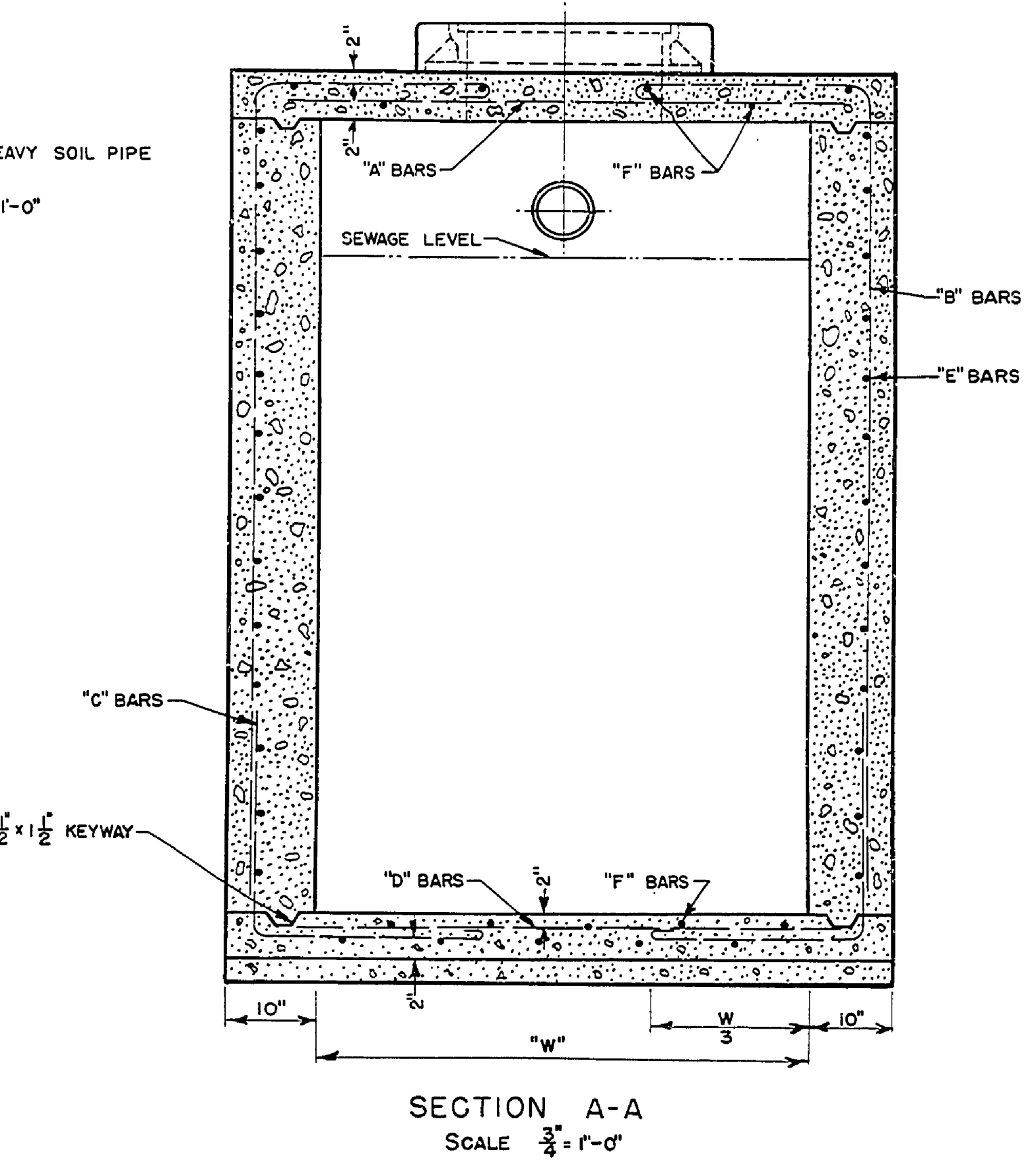
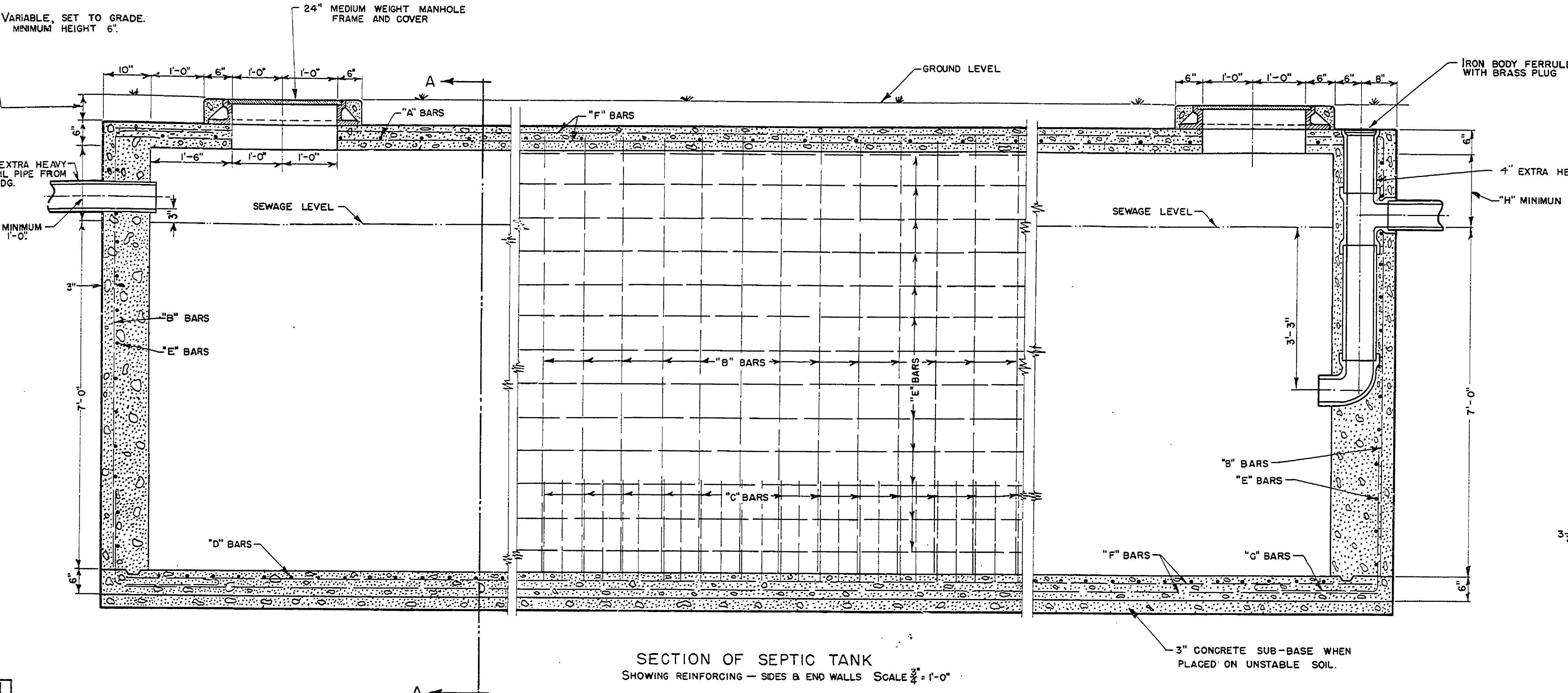


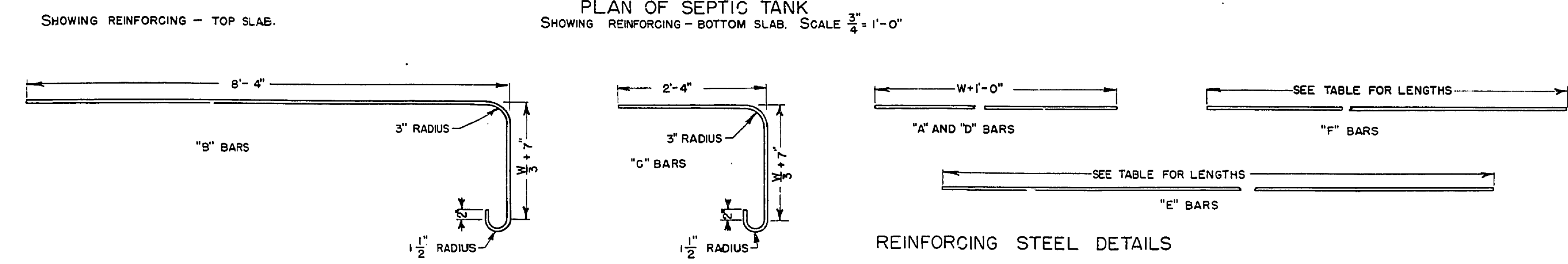
NO.	DATE	BY	REVISIONS
1	6-22-56	E.C.B.	
2			
3			
4			
5			
6			

DATE	APPROVED BY	DATE	APPROVED BY
7-1-63	<i>[Signature]</i>	2-22-63	<i>[Signature]</i>
2-1-63	<i>[Signature]</i>		
2-21-63	<i>[Signature]</i>		

DATE	REVIEWED BY SECTIONS	DATE	APPROVED BY
JUNE 26, 1956	ARCHITECTURAL ENGINEERING	7-1-63	<i>[Signature]</i>
	LANDSCAPE	2-21-63	<i>[Signature]</i>



LENGTH	WIDTH	GAL. IN GAL'S.	GAL'S. PER LIN. FT.	"A" BARS		"B" BARS		"C" BARS		"D" BARS		"E" BARS		"F" BARS	
				SIZE & SPACE	LENGTH	SIZE & SPACE	LENGTH	SIZE & SPACE	LENGTH	SIZE & SPACE	LENGTH	SIZE & SPACE	LENGTH	SIZE & SPACE	LENGTH
15'-0" TO 18'-0"	3'-0"	2360 TO 2830	157.1	1/2" @ 12" O.C.	10'-0"	1/2" @ 12" O.C.	1/2" @ 12" O.C.	10'-0"	1/2" @ 12" O.C.	1/2" @ 12" O.C.	1/2" @ 12" O.C.	1/2" @ 12" O.C.	1/2" @ 12" O.C.	1/2" @ 12" O.C.	1/2" @ 12" O.C.
16'-3" TO 19'-6"	3'-3"	2760 TO 3320	170.2	1/2" @ 12" O.C.	10'-0"	1/2" @ 12" O.C.	1/2" @ 12" O.C.	10'-0"	1/2" @ 12" O.C.	1/2" @ 12" O.C.	1/2" @ 12" O.C.	1/2" @ 12" O.C.	1/2" @ 12" O.C.	1/2" @ 12" O.C.	1/2" @ 12" O.C.
17'-6" TO 21'-0"	3'-6"	3200 TO 3850	183.3	1/2" @ 12" O.C.	10'-0"	1/2" @ 12" O.C.	1/2" @ 12" O.C.	10'-0"	1/2" @ 12" O.C.	1/2" @ 12" O.C.	1/2" @ 12" O.C.	1/2" @ 12" O.C.	1/2" @ 12" O.C.	1/2" @ 12" O.C.	1/2" @ 12" O.C.
18'-9" TO 22'-6"	3'-9"	3670 TO 4410	196.4	1/2" @ 12" O.C.	10'-0"	1/2" @ 12" O.C.	1/2" @ 12" O.C.	10'-0"	1/2" @ 12" O.C.	1/2" @ 12" O.C.	1/2" @ 12" O.C.	1/2" @ 12" O.C.	1/2" @ 12" O.C.	1/2" @ 12" O.C.	1/2" @ 12" O.C.
20'-0" TO 24'-0"	4'-0"	4190 TO 5020	209.4	1/2" @ 12" O.C.	10'-0"	1/2" @ 12" O.C.	1/2" @ 12" O.C.	10'-0"	1/2" @ 12" O.C.	1/2" @ 12" O.C.	1/2" @ 12" O.C.	1/2" @ 12" O.C.	1/2" @ 12" O.C.	1/2" @ 12" O.C.	1/2" @ 12" O.C.
21'-3" TO 25'-6"	4'-3"	4730 TO 5650	222.5	1/2" @ 12" O.C.	10'-0"	1/2" @ 12" O.C.	1/2" @ 12" O.C.	10'-0"	1/2" @ 12" O.C.	1/2" @ 12" O.C.	1/2" @ 12" O.C.	1/2" @ 12" O.C.	1/2" @ 12" O.C.	1/2" @ 12" O.C.	1/2" @ 12" O.C.
22'-6" TO 27'-0"	4'-6"	5300 TO 6360	235.9	1/2" @ 12" O.C.	10'-0"	1/2" @ 12" O.C.	1/2" @ 12" O.C.	10'-0"	1/2" @ 12" O.C.	1/2" @ 12" O.C.	1/2" @ 12" O.C.	1/2" @ 12" O.C.	1/2" @ 12" O.C.	1/2" @ 12" O.C.	1/2" @ 12" O.C.
25'-0" TO 30'-0"	5'-0"	6560 TO 7850	262.0	1/2" @ 12" O.C.	10'-0"	1/2" @ 12" O.C.	1/2" @ 12" O.C.	10'-0"	1/2" @ 12" O.C.	1/2" @ 12" O.C.	1/2" @ 12" O.C.	1/2" @ 12" O.C.	1/2" @ 12" O.C.	1/2" @ 12" O.C.	1/2" @ 12" O.C.
27'-6" TO 33'-0"	5'-6"	7920 TO 9500	288.0	1/2" @ 12" O.C.	10'-0"	1/2" @ 12" O.C.	1/2" @ 12" O.C.	10'-0"	1/2" @ 12" O.C.	1/2" @ 12" O.C.	1/2" @ 12" O.C.	1/2" @ 12" O.C.	1/2" @ 12" O.C.	1/2" @ 12" O.C.	1/2" @ 12" O.C.
30'-0" TO 36'-0"	6'-0"	9400 TO 11,300	314.2	1/2" @ 12" O.C.	10'-0"	1/2" @ 12" O.C.	1/2" @ 12" O.C.	10'-0"	1/2" @ 12" O.C.	1/2" @ 12" O.C.	1/2" @ 12" O.C.	1/2" @ 12" O.C.	1/2" @ 12" O.C.	1/2" @ 12" O.C.	1/2" @ 12" O.C.
33'-6" TO 39'-0"	6'-6"	11,050 TO 13,300	340.4	1/2" @ 12" O.C.	10'-0"	1/2" @ 12" O.C.	1/2" @ 12" O.C.	10'-0"	1/2" @ 12" O.C.	1/2" @ 12" O.C.	1/2" @ 12" O.C.	1/2" @ 12" O.C.	1/2" @ 12" O.C.	1/2" @ 12" O.C.	1/2" @ 12" O.C.
35'-0" TO 42'-0"	7'-0"	12,600 TO 15,380	366.7	1/2" @ 10" O.C.	10'-0"	1/2" @ 12" O.C.	1/2" @ 12" O.C.	10'-0"	1/2" @ 12" O.C.	1/2" @ 12" O.C.	1/2" @ 12" O.C.	1/2" @ 12" O.C.	1/2" @ 12" O.C.	1/2" @ 12" O.C.	1/2" @ 12" O.C.
37'-6" TO 45'-0"	7'-6"	14,700 TO 17,640	392.7	1/2" @ 10" O.C.	10'-0"	1/2" @ 12" O.C.	1/2" @ 12" O.C.	10'-0"	1/2" @ 12" O.C.	1/2" @ 12" O.C.	1/2" @ 12" O.C.	1/2" @ 12" O.C.	1/2" @ 12" O.C.	1/2" @ 12" O.C.	1/2" @ 12" O.C.
40'-0" TO 48'-0"	8'-0"	16,750 TO 20,050	419.9	1/2" @ 9" O.C.	10'-0"	1/2" @ 12" O.C.	1/2" @ 12" O.C.	10'-0"	1/2" @ 12" O.C.	1/2" @ 12" O.C.	1/2" @ 12" O.C.	1/2" @ 12" O.C.	1/2" @ 12" O.C.	1/2" @ 12" O.C.	1/2" @ 12" O.C.



CONCRETE SPECIFICATIONS
 THE CONCRETE MIX SHALL CONSIST OF ONE SACK OF GEMENT, 2.25 CU. FT. OF FINE AGGREGATE, 4.0 CU. FT. OF COARSE AGGREGATE AND ENOUGH WATER TO MAKE A WORKABLE MIX, BUT NOT TO EXCEED SIX GALLONS;
 OR, ONE SACK OF GEMENT, 5.0 CU. FT. OF BANK RUN GRAVEL AND ENOUGH WATER TO MAKE A WORKABLE MIX BUT NOT TO EXCEED SIX GALLONS.
 THE AGGREGATE SHALL BE CLEAN, FREE FROM SILT AND CLAY; AND SHALL PASS A 1" SCREEN. TIME OF MIXING SHALL BE NOT LESS THAN 1 1/2 MINUTES.
 THE CONCRETE SHALL BE PLACED IN THE FORMS IN HORIZONTAL LAYERS, NOT OVER 2" THICK AND THOROUGHLY SPADED ALONG THE FORMS AND AROUND THE REINFORCING STEEL.

FORM SPECIFICATIONS
 SPACING OF STUDDING-USE 3/4" SHEATHING 22" O.C.
 SPACING OF WALES-USE 2"x4" STUDDING 30" O.C.
 SPACING OF TIES-USE DOUBLE 2"x4" WALES 30" O.C.
 TIE AT EVERY STUD.
 SHORING SHALL BE 4"x4" OR DOUBLE 2"x4"
 "C" BARS TO EXTEND ACROSS BOTTOM SLAB AND UP SIDEWALLS WHEN W= 3' OR 3'-9".
 REINFORCING TO BE THE SAME FOR BOTH ENDS AND SIDEWALLS.