

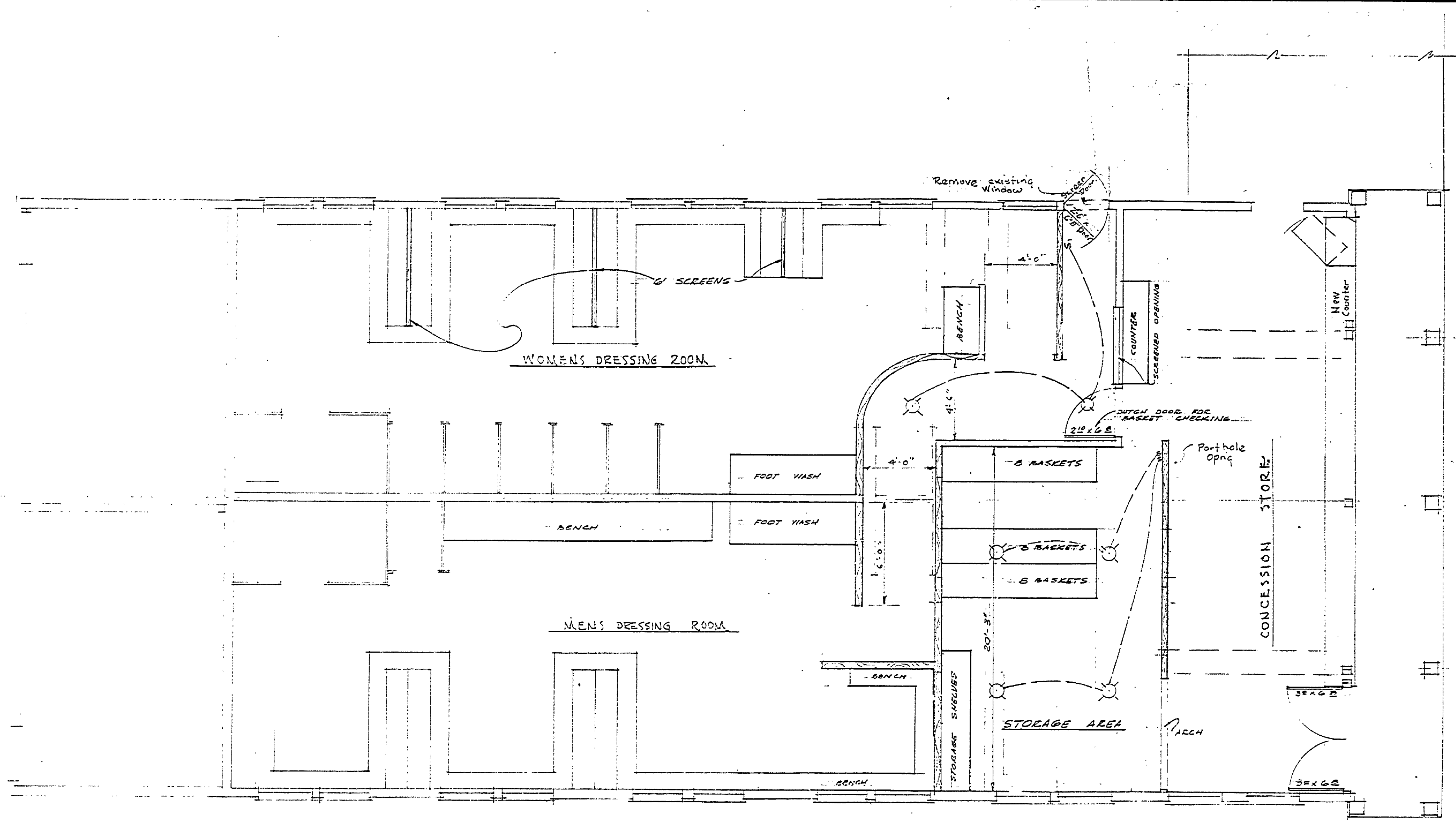
| REVISIONS | | NO. | | DATE | | BY | | DATE | | BY | |
|-----------|--|-----|--|------|--|----|--|------|--|----|--|
| 4 | | 1 | | | | | | | | | |
| 5 | | 2 | | | | | | | | | |
| 6 | | 3 | | | | | | | | | |

APPROVED BY
R. C. Kelly
 ASSISTANT CHIEF IN CHARGE
 OF DESIGN DATE: 11-22-46

DATE
 11-13-46
 11/14/46
 11/14/46

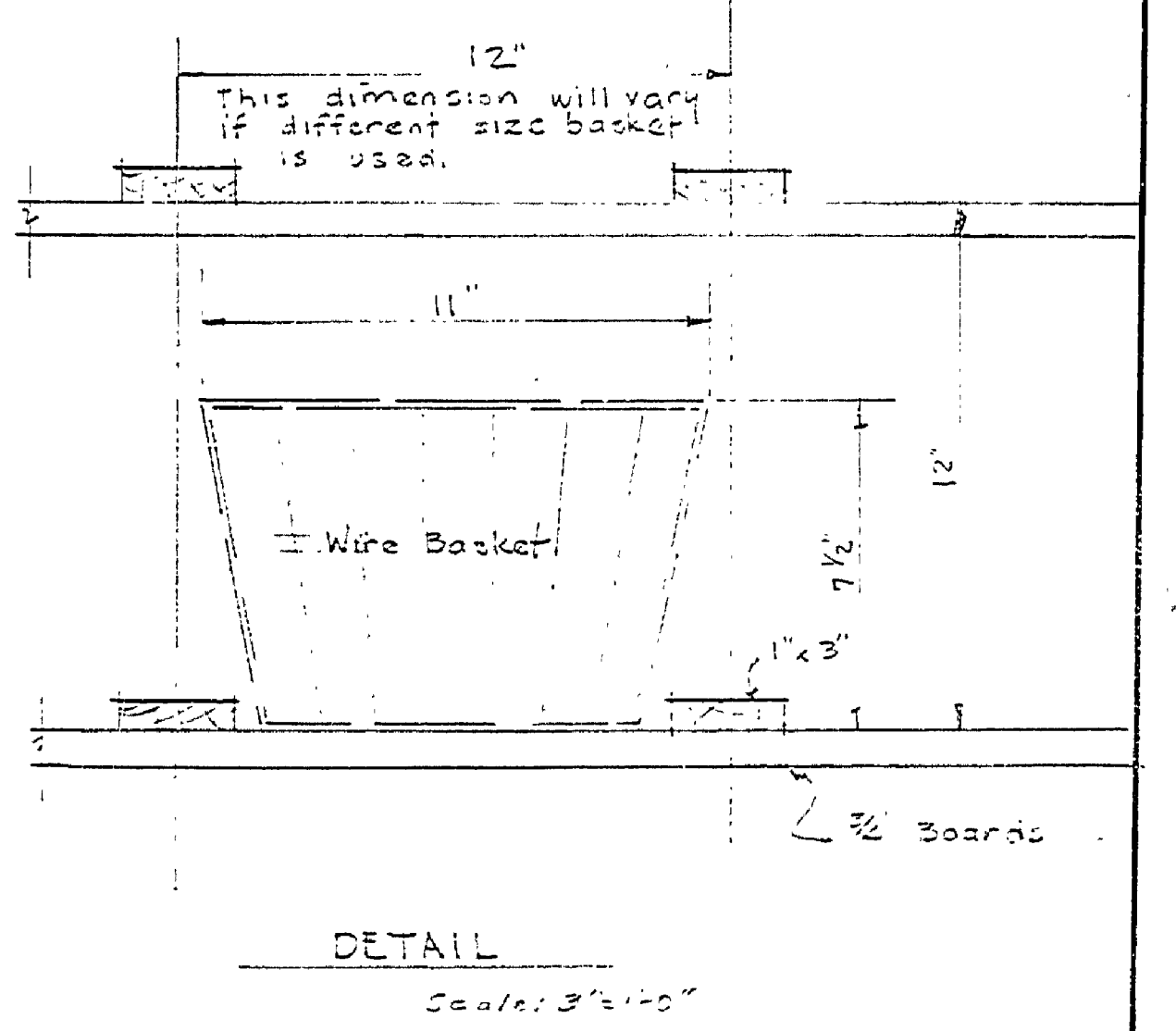
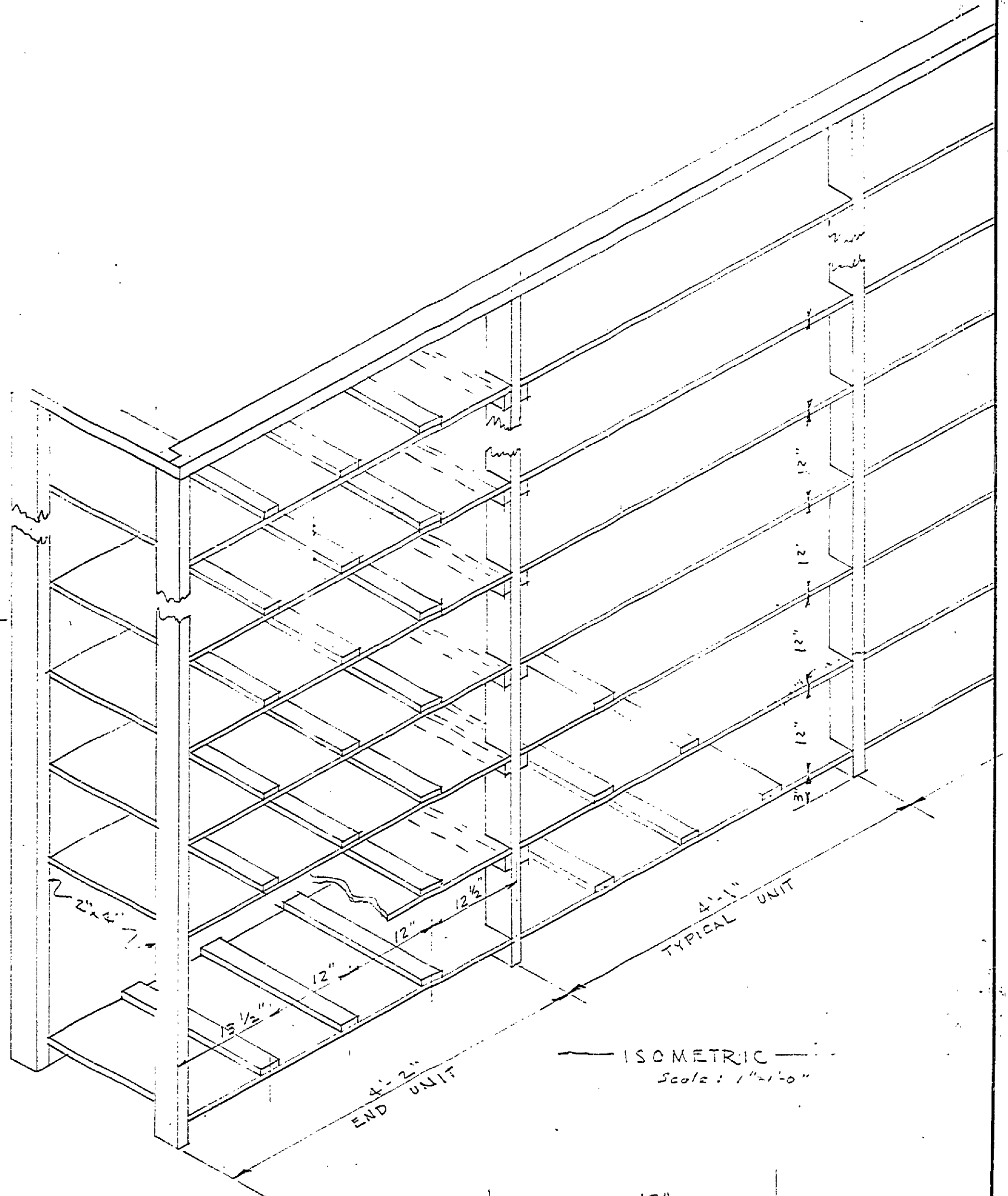
REVIEWED BY SECTIONS
 ARCHITECTURAL A.H.S.
 ENGINEERING H.C.M.
 LANDSCAPE P.H.W.

DRAWN BY
 TRACED BY
 CHECKED BY
 DATE



REVISED FLOOR PLAN
 Scale: 1/8" = 1'-0"

NOTE:
 Existing structure to remain
 Existing structure to be removed
 New construction



BASKET RACK DETAILS

SUPPLEMENTARY SHEET
 SHOWING REVISED FLOOR PLAN OF 96a
 See original sheet for existing structure

INSURANCE No. 9

MICHIGAN
 DEPARTMENT OF CONSERVATION
 STATE PARKS DIVISION

PAVILION-BATH HOUSE
 BAY CITY STATE PARK

SHEET
 NO. 1
 OF 1

PLAN NO.
 A-96b