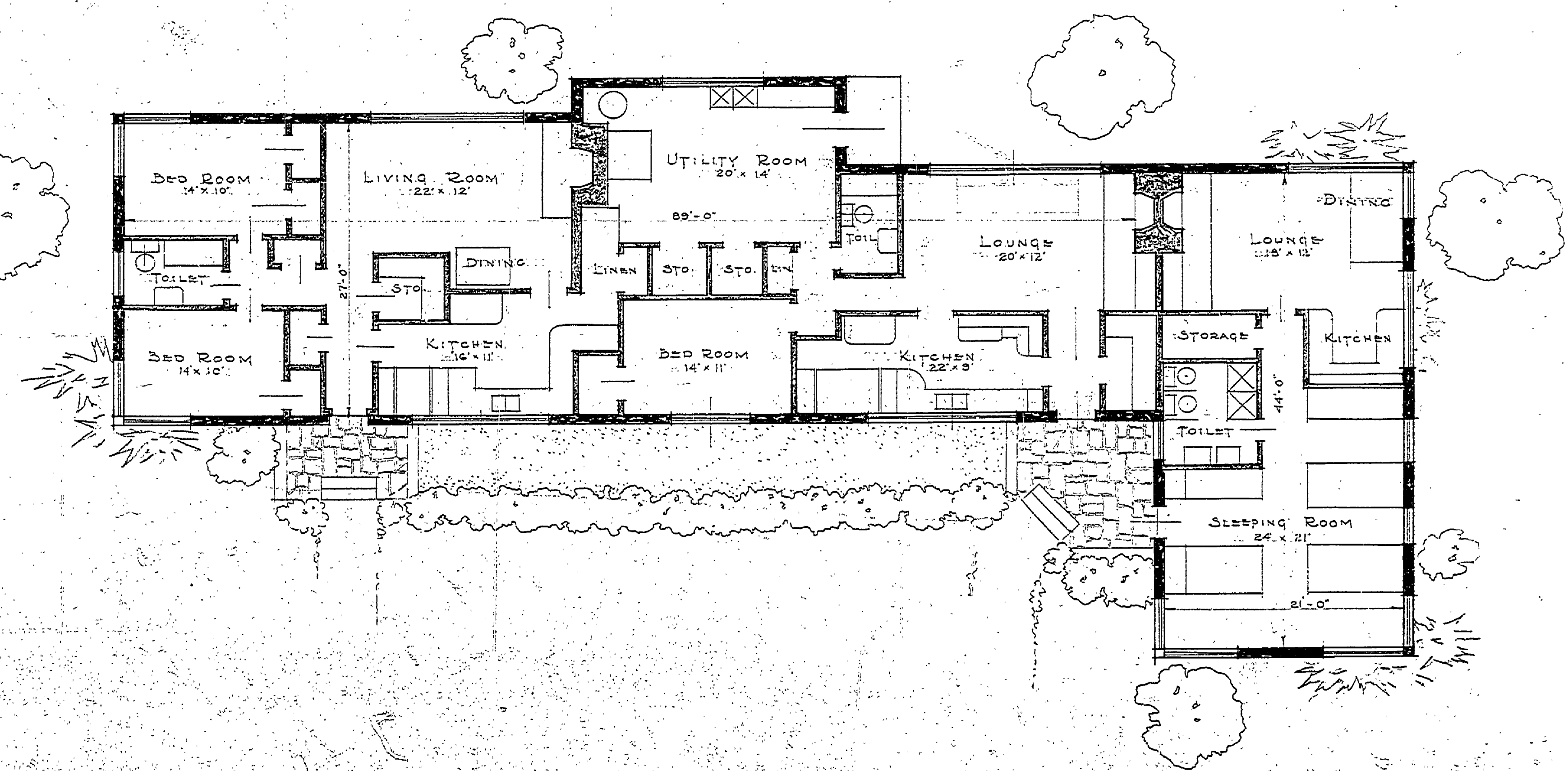


MICHIGAN
 DEPT. of CONSERVATION
 PARKS DIVISION
 BAY CITY STATE PARK
 STAFF QUARTERS

E. F. HARTWICK, A.I.A.
 D. RUDINE, DEL.

PLAN
 AND
 ELEVATION
 SCALE 1/8" = 1'-0"



Cost \$29,500. P-99