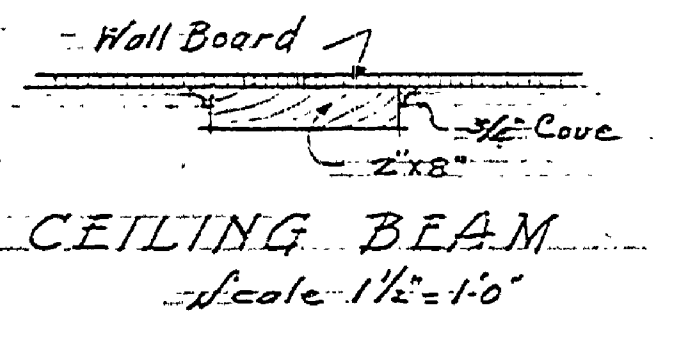


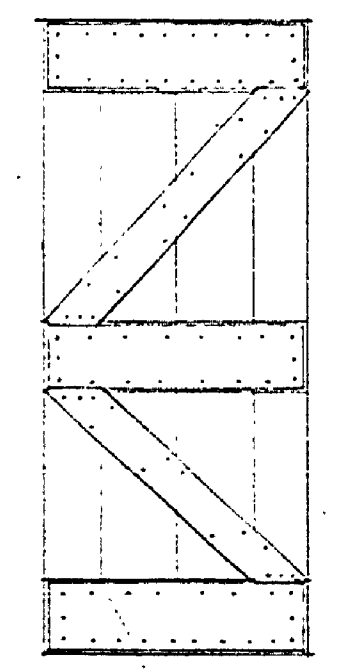
SECTION A-A
Scale 1/2" = 1'-0"

SECTION B-B

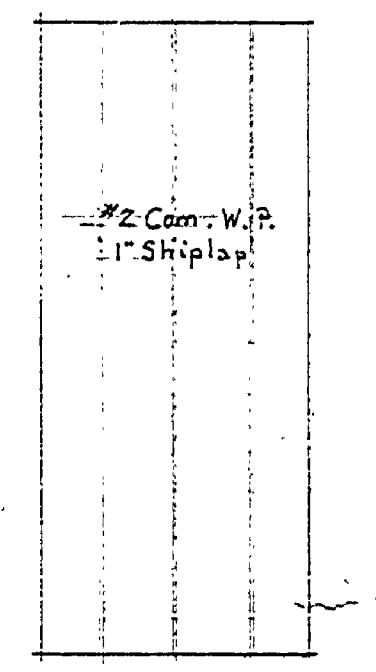


Mkd	Size	Mat. Janb	Notes
A	3'-0" x 7'-0" x 2 1/4"	W.P. 1 3/4"	Gl. 4 Lites - see Detail
B	2'-10" x 7'-0" x 2 1/4"	W.P. 1 3/4"	" " " "
C	2'-10" x 7'-0" x 1/8"	W.P. 1 1/8"	Typical Int.
D	2'-8" x 7'-0" x 1/8"	"	" " " "
E	2'-8" x 6'-8" x 1/8"	"	" " " "
F	2'-6" x 7'-0" x 1/8"	"	" " " "
G	2'-0" x 7'-0" x 1/8"	"	" " " "
H	2'-6" x 6'-8" x 1/8"	"	" " " "
J	2'-2" x 6'-8" x 1/8"	"	" " " "

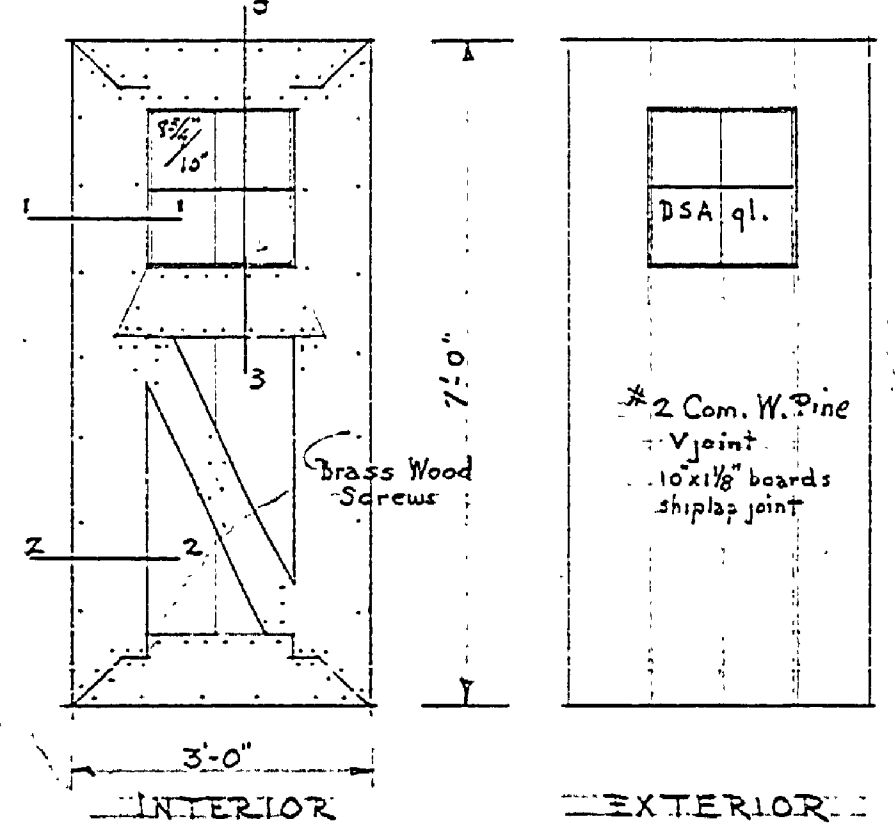
All doors to be built on job. To be well sanded and assembled with brass wood screws & glue. Wood to be well kiln dried stock.
 Doors A & B to be equipped with 1 1/2" pr. Half surface butt hinges 4" x 4" Stanley #165 and #1244 Mortise Thumb Latch with 2 handles and a Yale Rim Night Latch; Buhl #042 R.
 Interior doors to be equipped with 1 1/2" pr. Half surface butt hinges 3" x 3" Stanley #165 and #1248. Thumb Latch.



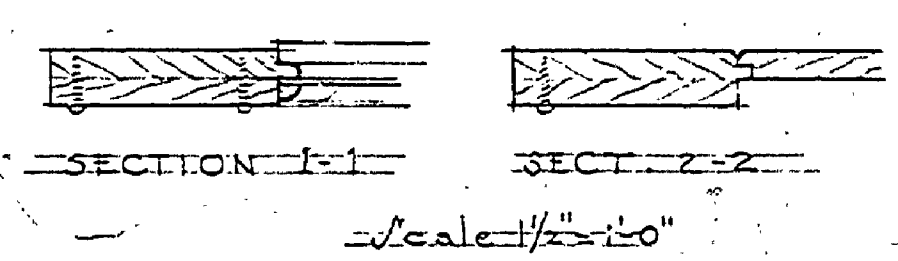
REVERSE FACE SIDE
TYPICAL INTERIOR DOR



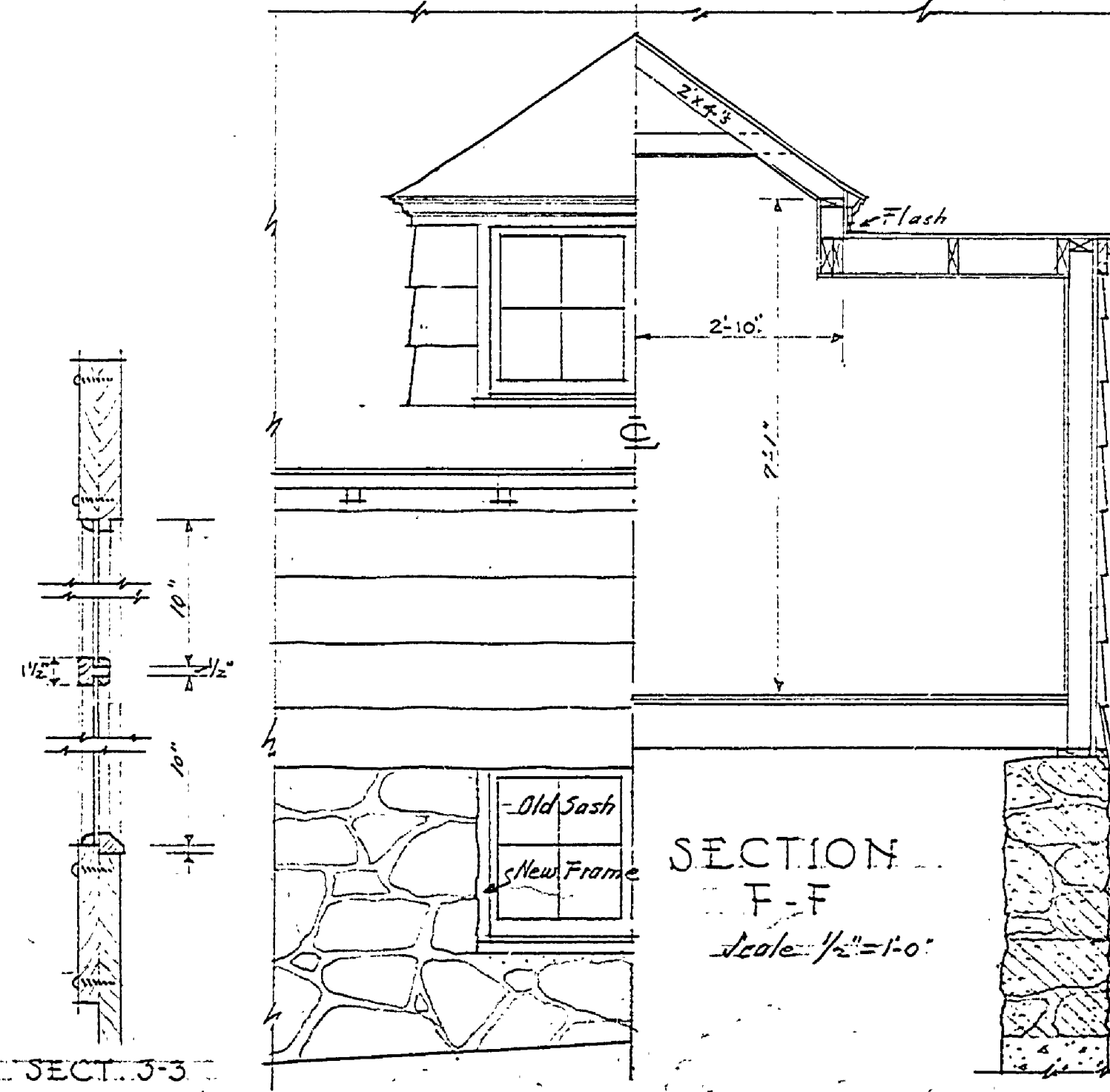
2x4 Core W.P. 1" Ship Lap



DOOR A
Door B similar



SECTION 1-1 SECTION 2-2
Scale 1/2" = 1'-0"



SECTION F-F
Scale 1/2" = 1'-0"

INSURANCE No. 1
A-99

BAY CITY STATE PARK CARETAKER'S RESIDENCE	
SYMBOL	SHEET NO.
NUMBER	2 of 3
TITLE	FILE NO.
DRAWN BY	R.B.H.

15-9-R-9F