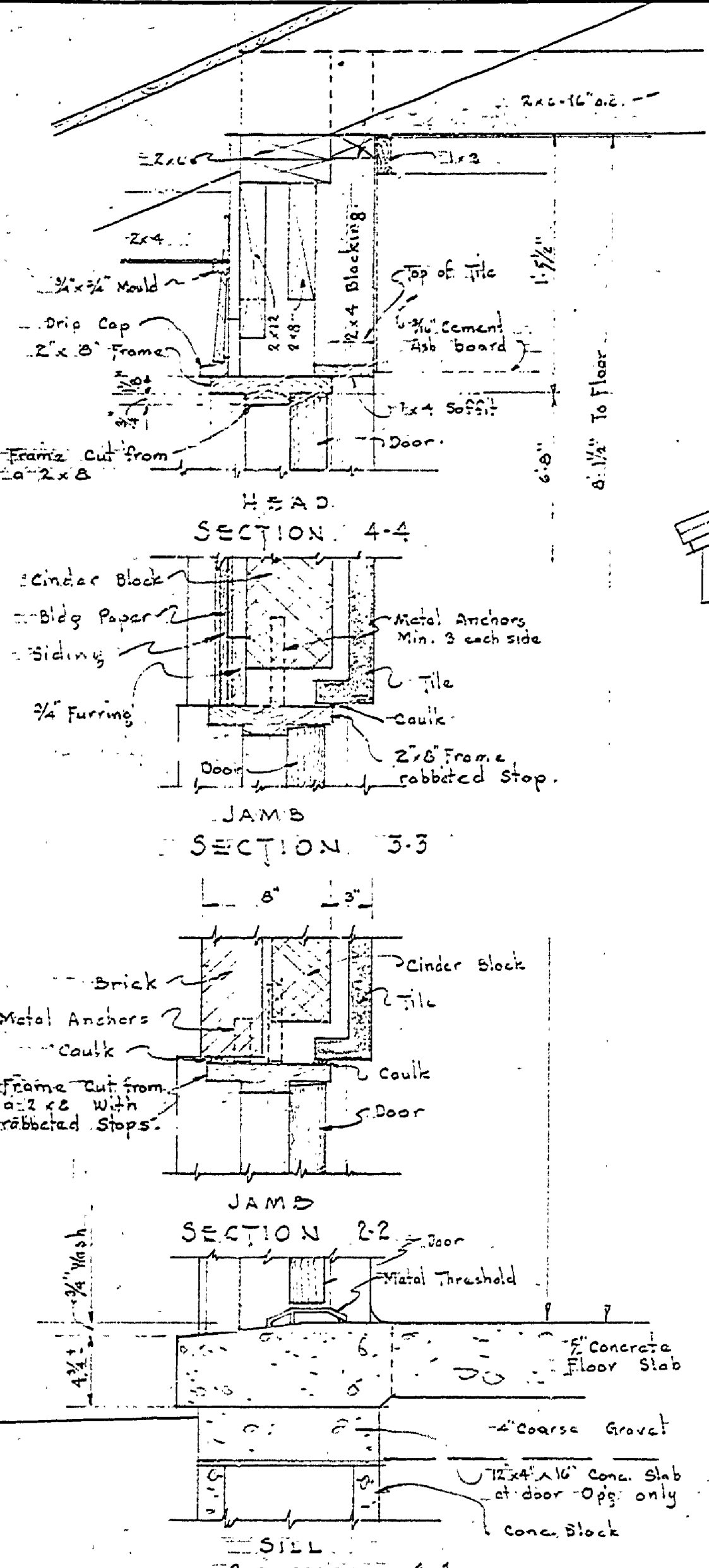


NO.	DATE	BY	REVISIONS
1			
2			
3			
4			
5			
6			

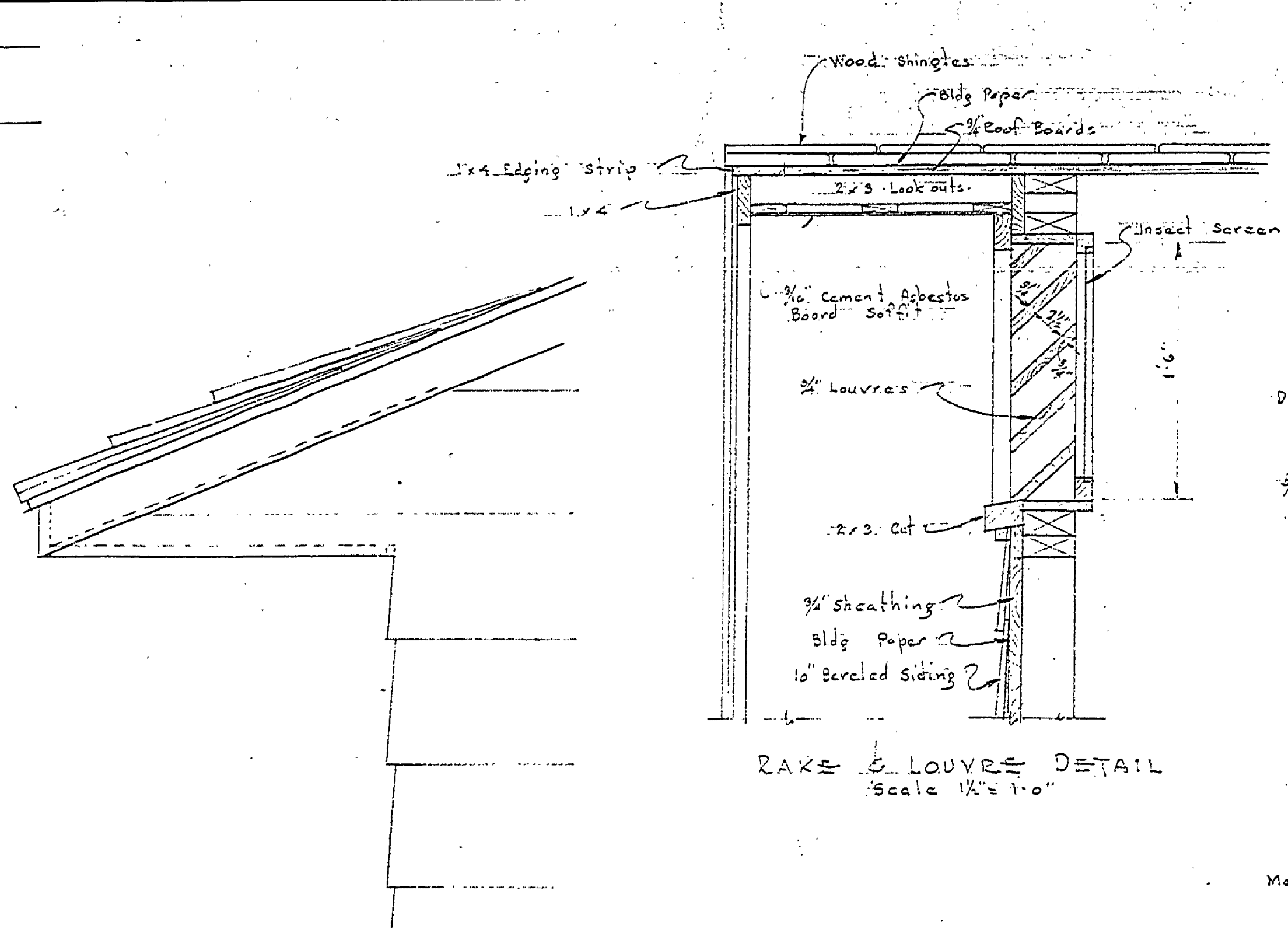
DESIGNED BY: J. W. GREENWOOD  
 DRAWN BY: J. W. GREENWOOD  
 CHECKED BY: J. W. GREENWOOD  
 DATE: 4-20-52

APPROVED BY: J. W. GREENWOOD  
 ASSISTANT CHIEF IN CHARGE  
 DATE: 4-20-52

REVIEWED BY SECTIONS:  
 ARCHITECTURAL: J. W. GREENWOOD  
 ENGINEERING: H. C. M. 28 Jun 52  
 LANDSCAPE: J. W. GREENWOOD

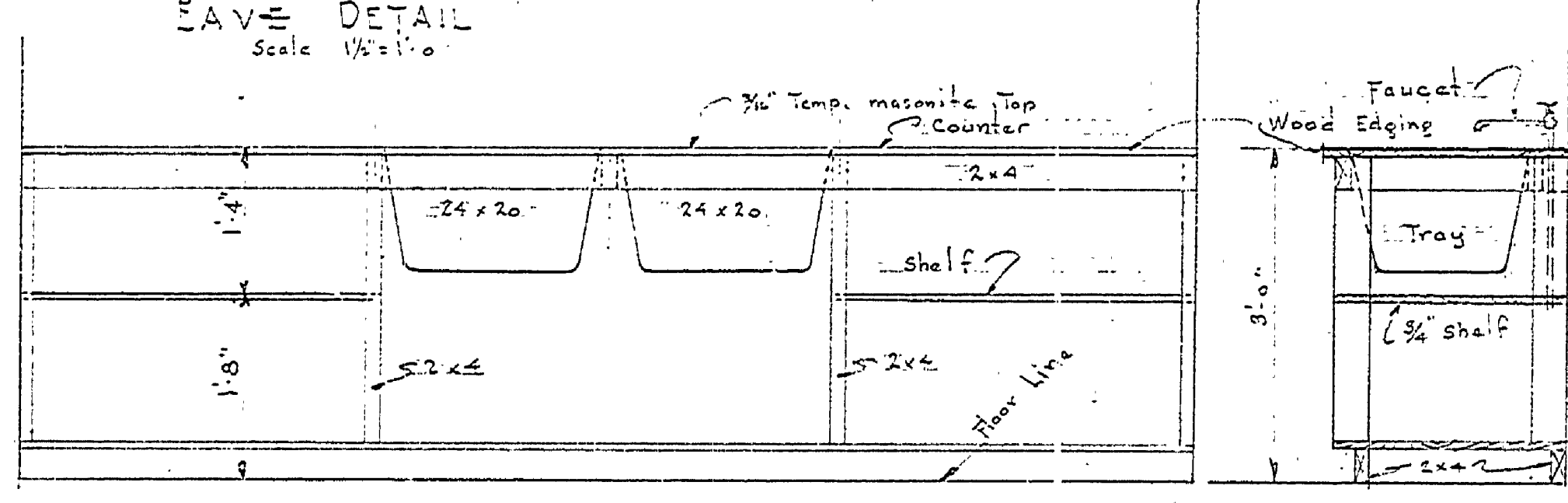


DOOR DETAIL  
 Scale: 1/4" = 1'-0"

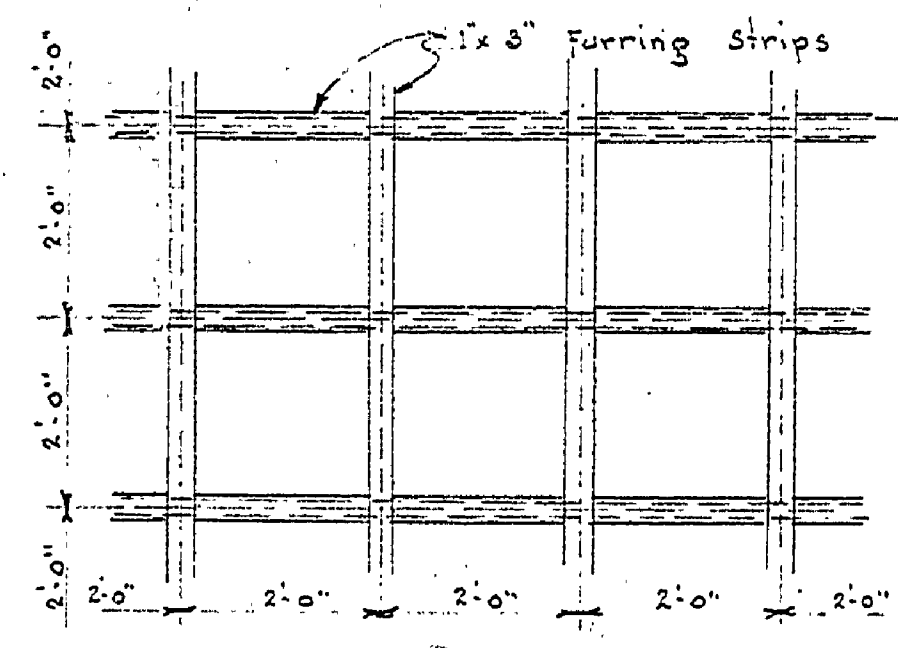


EAVE DETAIL  
 Scale: 1/4" = 1'-0"

RAKE & LOUVRE DETAIL  
 Scale: 1/4" = 1'-0"

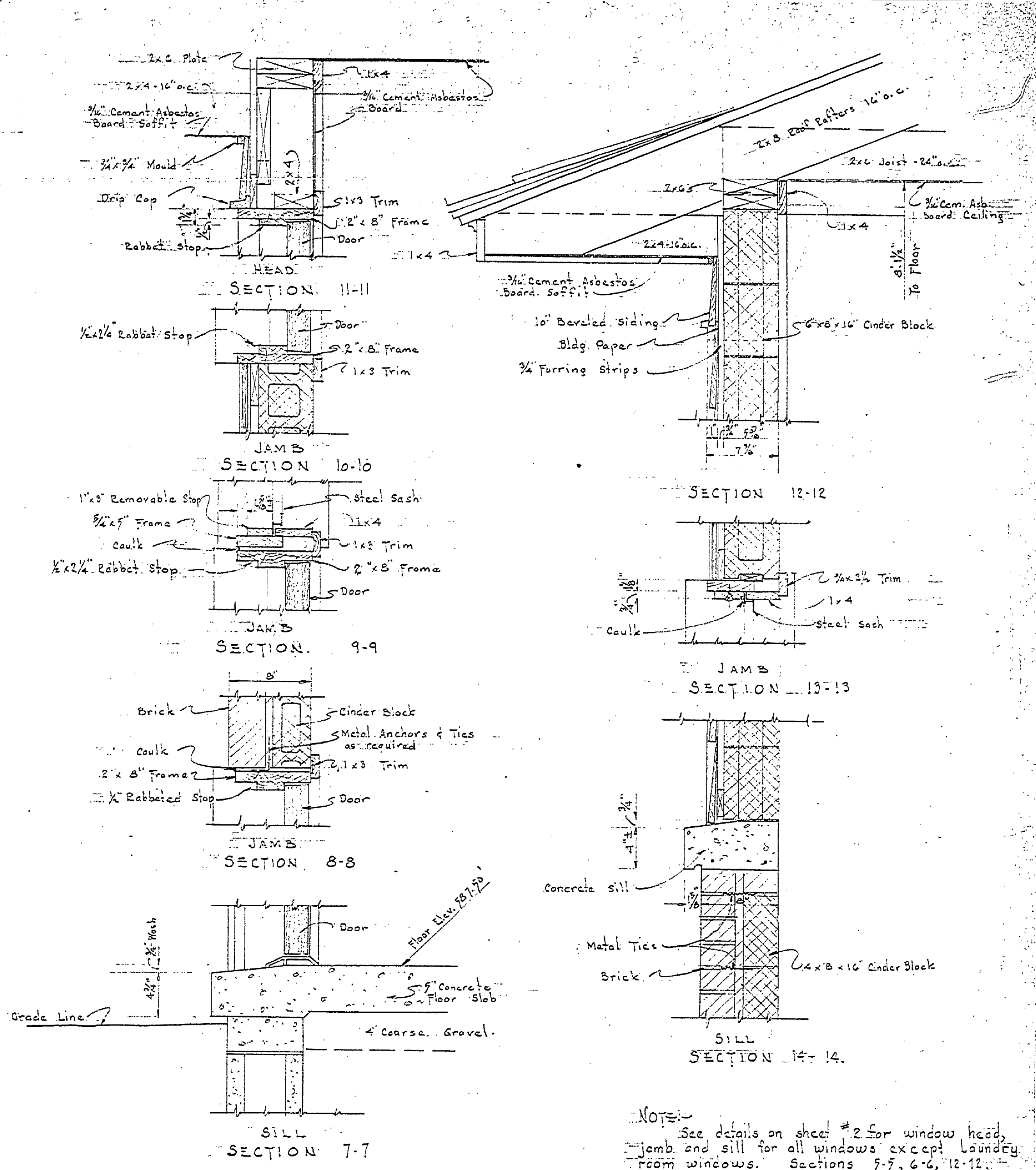


ELEVATION  
 LAUNDRY TRAY DETAIL  
 Scale: 1/4" = 1'-0"



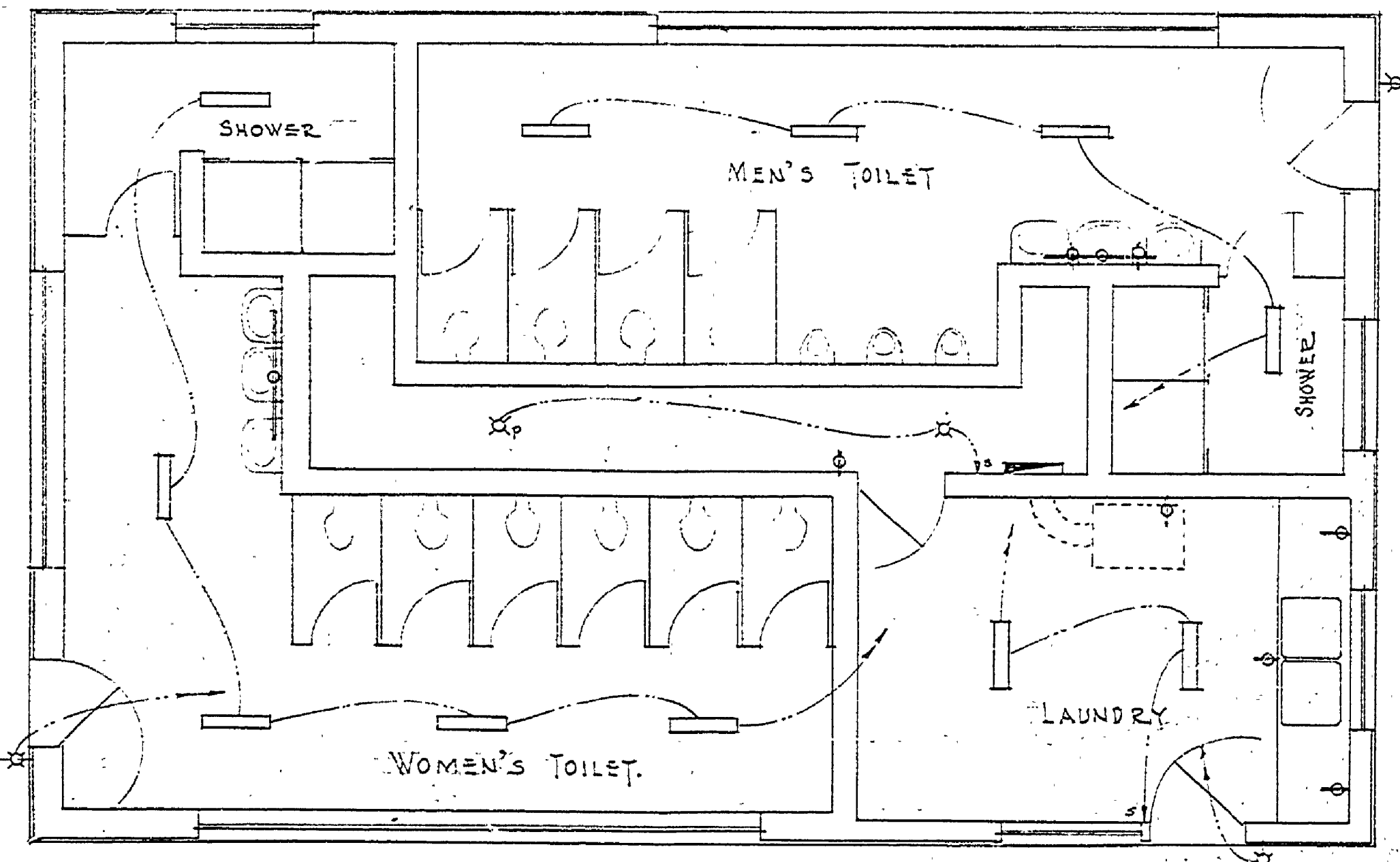
FURRING DETAIL  
 FOR CEILING TILE  
 Scale: 3/4" = 1'-0"

DETAIL EDGE OF  
 CEILING TILE  
 Full Size



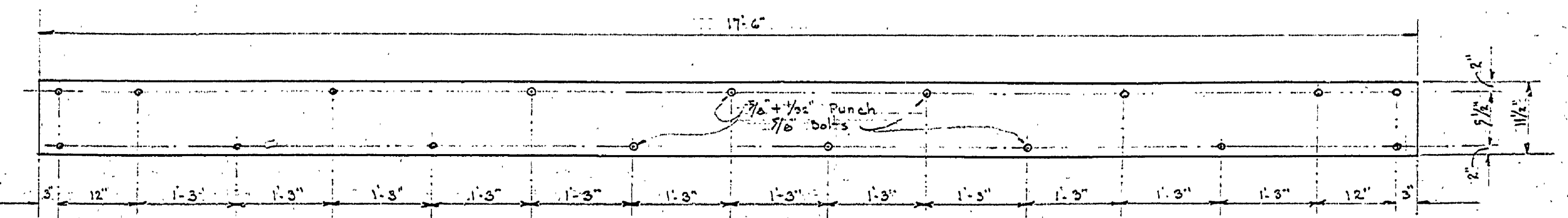
WINDOW & DOOR DETAIL  
 Scale: 1/4" = 1'-0"

NOTE: See details on sheet #2 for window head, jamb and sill for all windows except Laundry room windows. Sections 7-7, 6-6, 12-12, 13-13 and 14-14 on this page apply to Laundry room windows.



ELECTRICAL PLAN  
 Scale: 1/4" = 1'-0"

- ELECTRICAL SYMBOLS
- Recessed Fluorescent Fixture
  - Bracketed Fluorescent Fixture
  - Bracketed Exterior Fixture
  - Convenience Outlet (Duplex)
  - Switch
  - Line to Panel (Box)
  - Panel Box
  - Ceiling Light



1/2" x 1/2" x 1/2" LONG  
 STEEL PLATE PUNCH AS SHOWN  
 FOR LINTEL OVER WINDOW "A"  
 Scale: 3/4" = 1'-0"