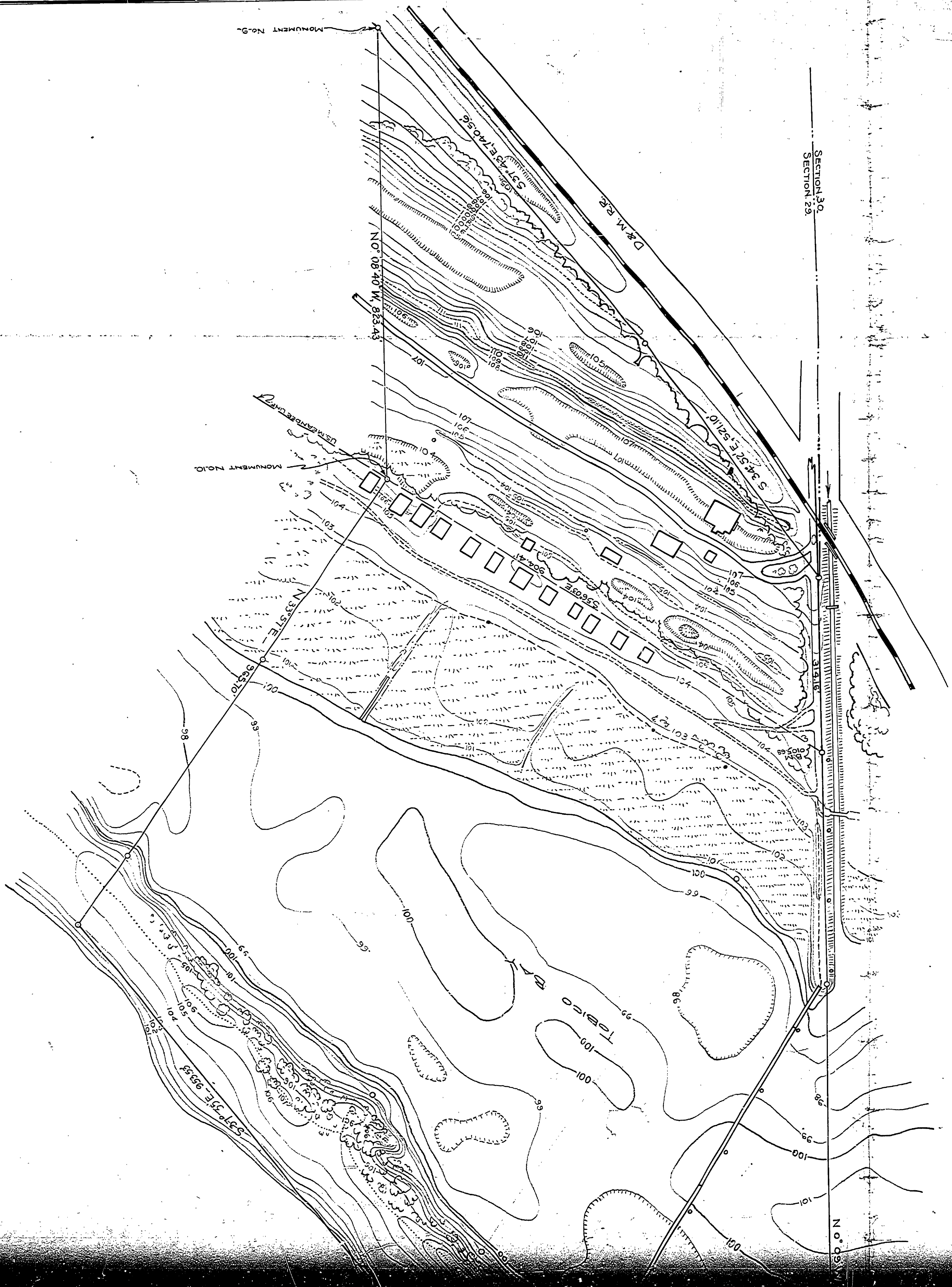
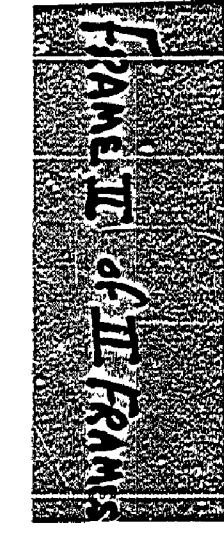
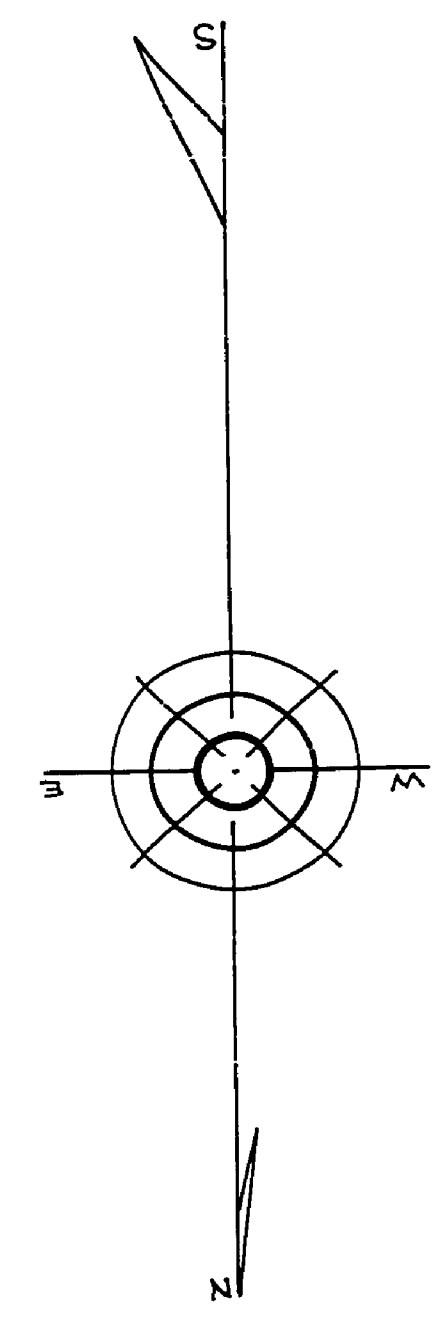


STATE OF MICHIGAN.
 DEPARTMENT OF CONSERVATION.
 Geol. F. H. Hagarth, Director.
 DIVISION OF STATE PARKS.
 P. J. Hoffmaster, Superintendent.
 SURVEY AND TOPOGRAPHY OF
 LAND ADJACENT TO BAY CITY STATE PARK.
 Dec. 1930 -
 Scale: 1 inch = 100 feet.
 Contour Interval: one foot.
 C. M. Cade, Civ. Engr.

89



SECTION 30
 SECTION 29

N. 0° 03' W.