

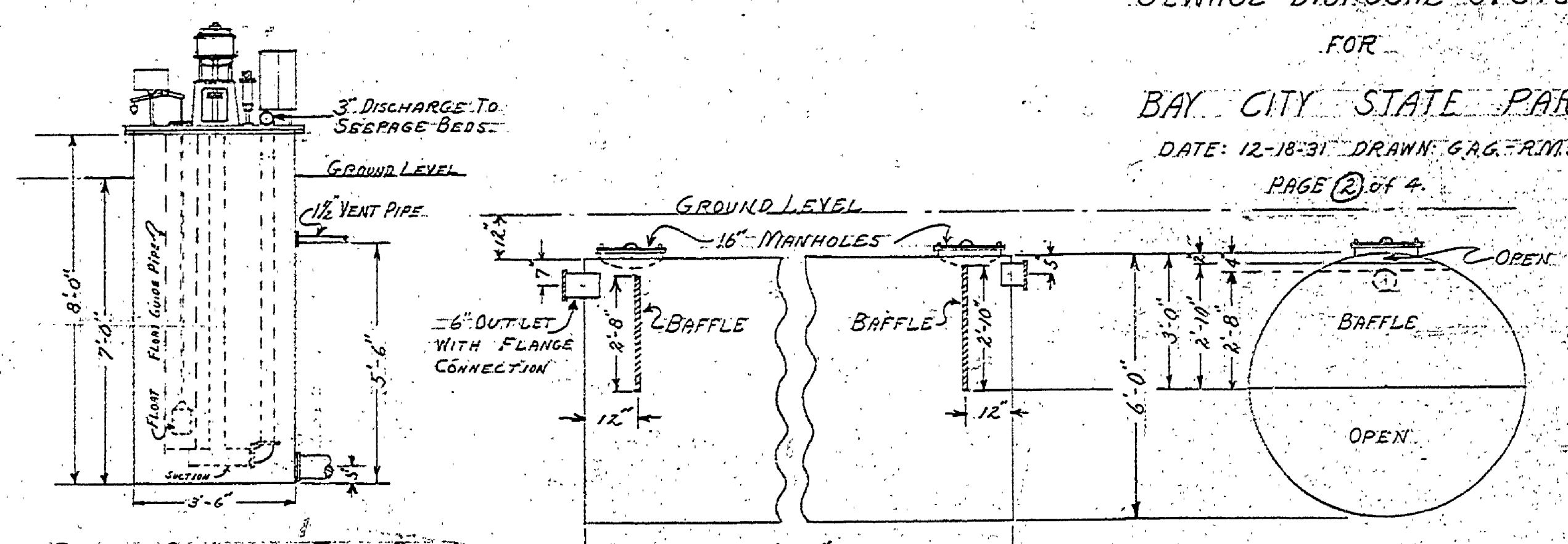
SEWAGE DISPOSAL SYSTEM

FOR

BAY CITY STATE PARK

DATE: 12-18-31 DRAWN: G.A.G. R.M.S.

PAGE 2 OF 4



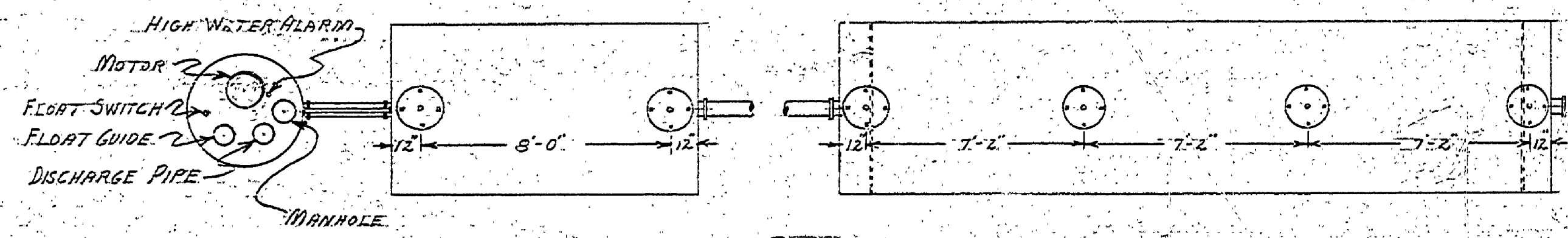
SEWAGE EJECTOR & TANK DETAIL  
SCALE: 3/8"=1'

LONGITUDINAL SECTION

CROSS SECTION

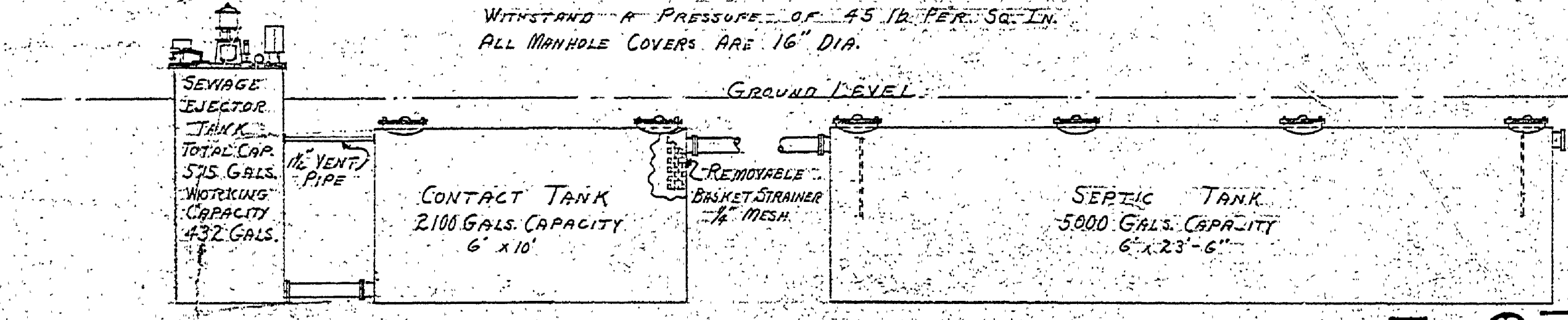
NOTE: ELECTRIC SEWAGE EJECTOR TO BE AUTOMATIC AND CAPABLE OF PUMPING 150 GAL. PER MIN. AGAINST 12' HEAD TO OPERATE ON BAY CITY LIGHT CIRCUIT, 115 VOLT 60 CYCLE. S.P. MOTOR TO BE HOWELL CONDENSER TYPE.

SEPTIC TANK DETAIL  
SCALE: 3/8"=1'



PLAN  
SCALE: 1/2"=1'

NOTE: ALL INTAKE AND OUTLET PIPES ARE 6" PIPES WITH FLANGE CONNECTIONS  
ALL TANKS TO BE 10 GAUGE BRACKEN OR TONGUE IRON AND BUILT TO WITHSTAND A PRESSURE OF 45 LB. PER SQ. IN.  
ALL MANHOLE COVERS ARE 16" DIA.



PROFILE  
SCALE: 1/2"=1'

EAT E-97  
Sheet No. 12