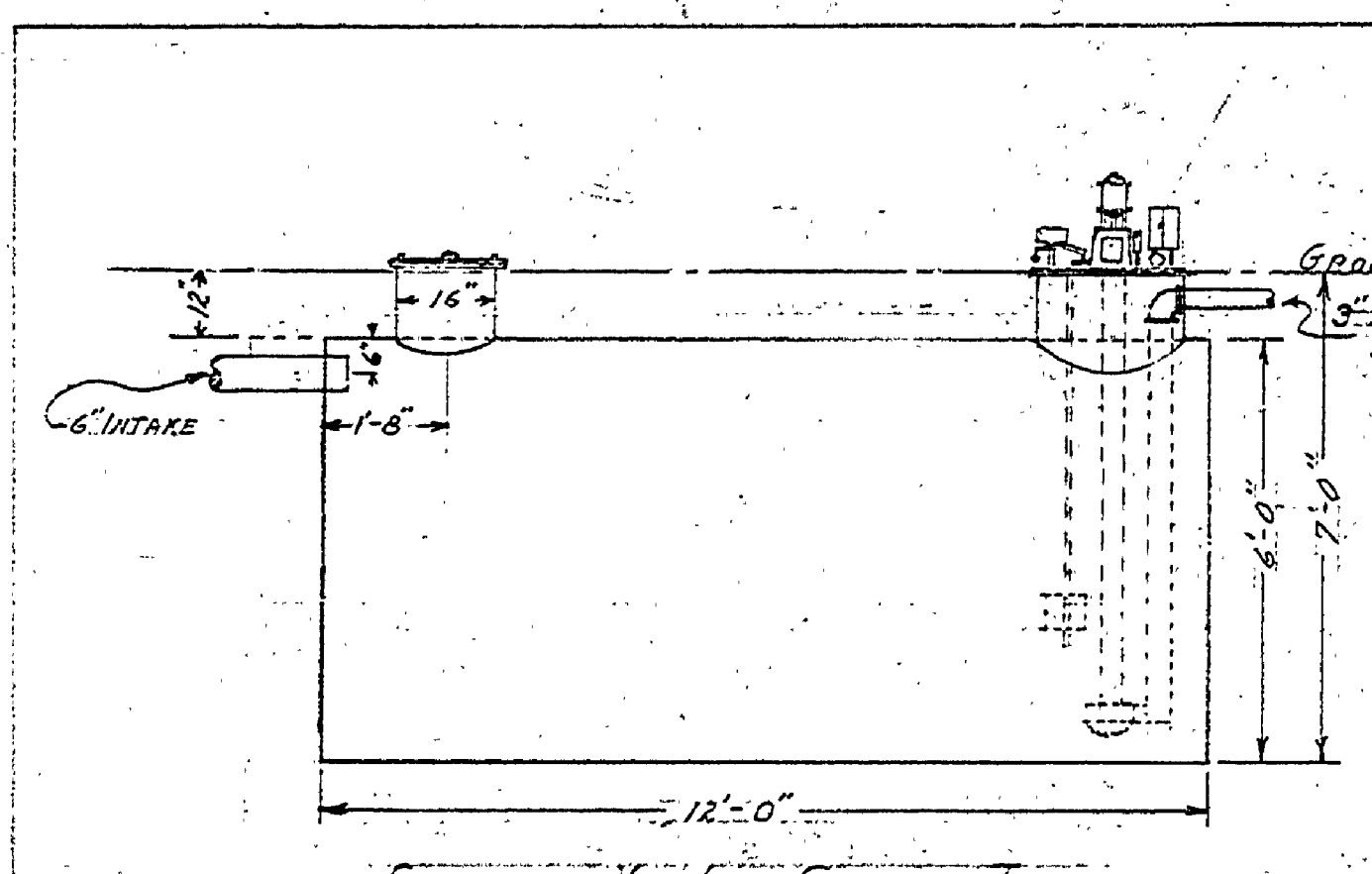


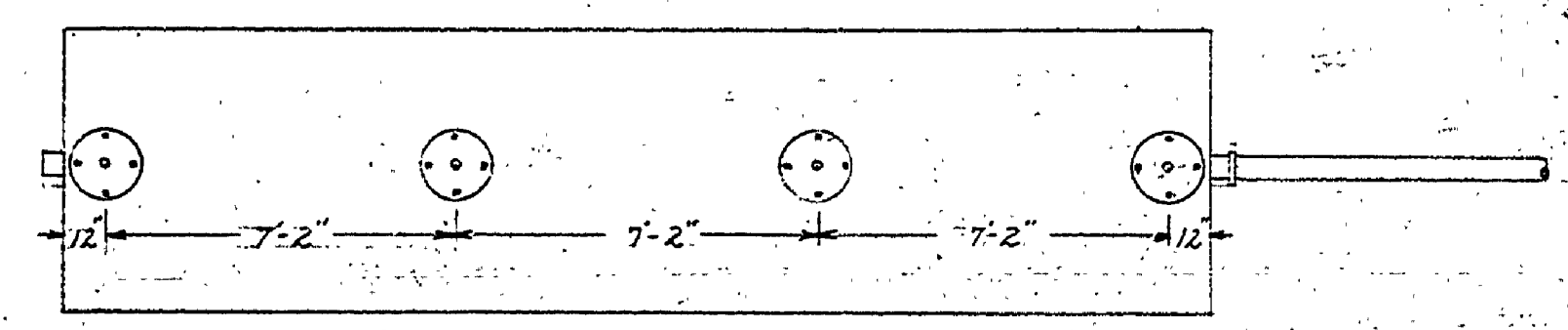
PLAN No. 12.17

SEWAGE DISPOSAL SYSTEM
FOR
BAY CITY STATE PARK
DATE: 12-17-31 DRAWN: GAG-RMS.
PAGE 1 OF 4



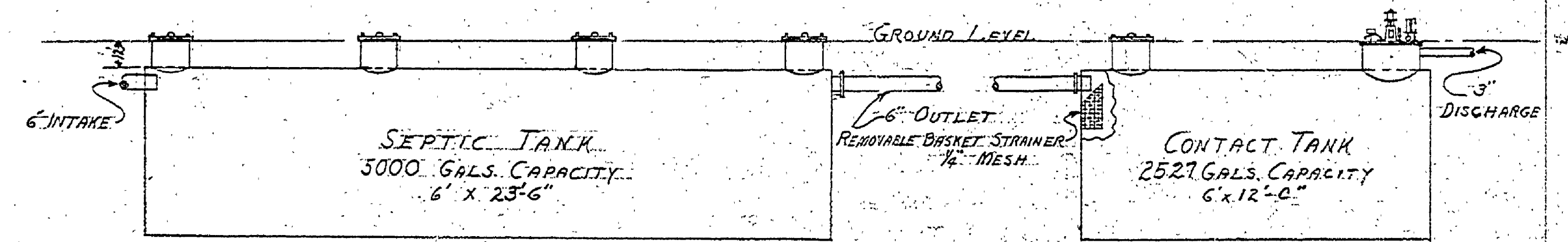
ENLARGED VIEW OF CONTACT TANK
SCALE: 3/8" = 1'

NOTE: ELECTRIC SEWAGE EJECTOR TO BE AUTOMATIC AND CAPABLE OF PUMPING 150 GAL. PER MIN. AGAINST 12' HEAD, TO OPERATE ON BAY CITY LIGHT CIRCUIT, 115 VOLT 60 CYCLE S.P. MOTOR TO BE HOWELL CONDENSER TYPE.



PLAN
SCALE: 1/4" = 1'

NOTE: ALL INTAKE AND OUTLET PIPES ARE 6" PIPES WITH FLANGE CONNECTIONS. ALL TANKS TO BE 10 GAUGE ARMCO OR TENCH IRON AND BUILT TO WITHSTAND A PRESSURE OF 45 LB. PER SQ. IN. ALL MANHOLE COVERS ARE 16" DIA.



PROFILE
SCALE: 1/4" = 1'

E-97 75-9-SF-2F
SHEET 3 OF 3
Sheet No. 2