

$\Delta = 7.38^\circ R$
 $D = 3.00'$
 $T = 12.77'$
 $L = 23.54'$
 $E = 4.2'$
 $R = 1810.08'$
 $PC = 0+01.1$
 $PI = 1+23.5$
 $PT = 2+47.0$

$\Delta = 12.20^\circ 30' L$
 $D = 5.00'$
 $T = 12.43'$
 $L = 24.86'$
 $E = 6.56'$
 $R = 1148.28'$
 $PC = 1+56.70$
 $PI = 6+11.00$
 $PT = 7+33.53$

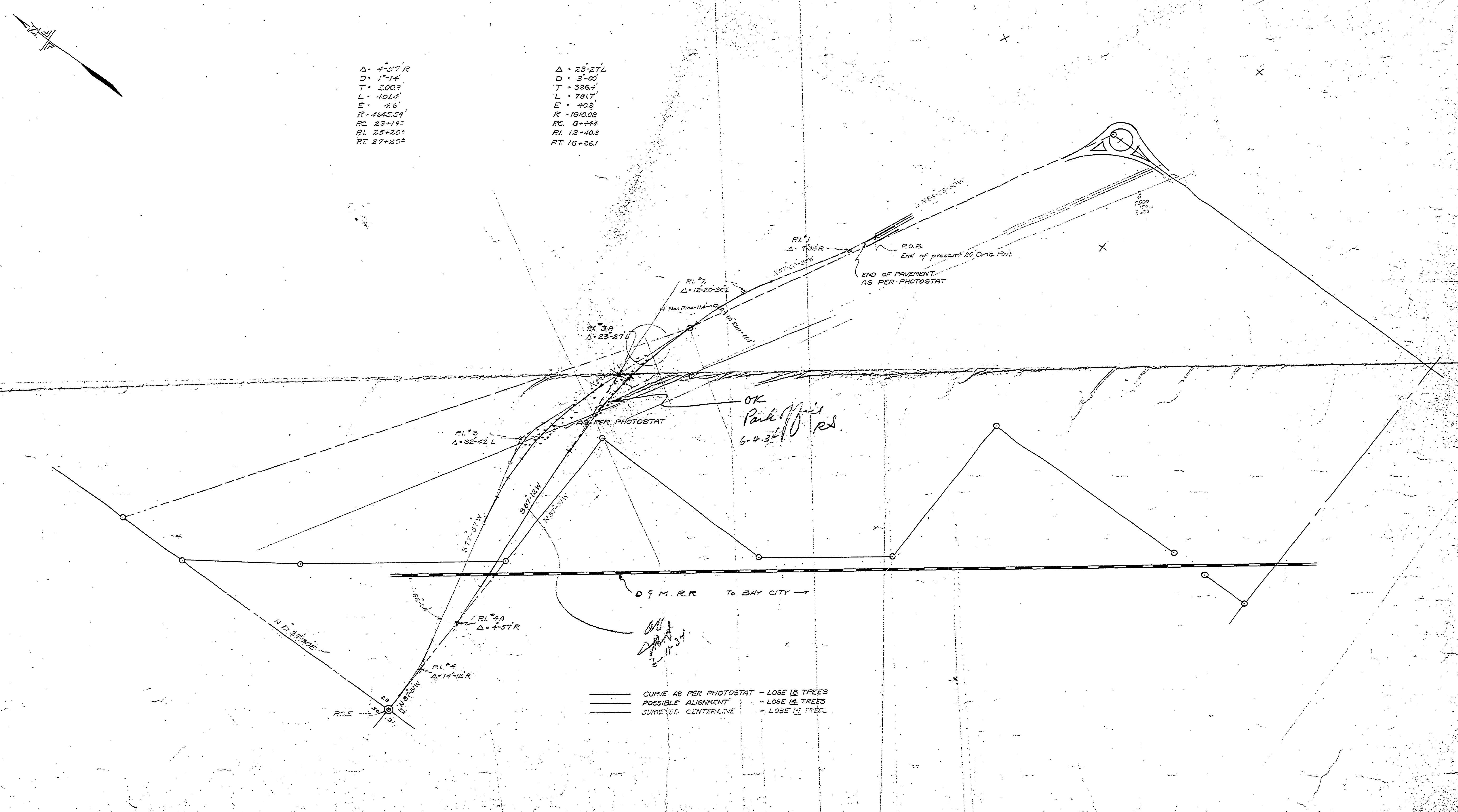
$\Delta = 32.42^\circ$
 $D = 1.50'$
 $T = 16.23'$
 $L = 22.52'$
 $E = 16.62'$
 $R = 396.20'$
 $PC = 16+24.60$
 $PI = 17+40.03$
 $PT = 18+50.12$

$\Delta = 14.12^\circ R$
 $D = 5.00'$
 $T = 14.27'$
 $L = 28.54'$
 $E = 3.80'$
 $R = 1148.29'$
 $PC = 20+29.41$
 $PI = 29+41.59$
 $PT = 29+82.81$

R.C.E. 1" IRON PIPE
 SEC. CORNER COMMON
 TO SECS. 29, 30, 31 & 32,
 T15N, R5E,
 BANGOR TWP, BAY CO.

$\Delta = 4.57^\circ R$
 $D = 1.14'$
 $T = 20.09'$
 $L = 40.14'$
 $E = 4.6'$
 $R = 4445.59'$
 $PC = 23+19.2$
 $PI = 25+20.2$
 $PT = 27+20.2$

$\Delta = 23.27^\circ L$
 $D = 3.00'$
 $T = 396.4'$
 $L = 781.7'$
 $E = 40.9'$
 $R = 1910.08'$
 $PC = 6+44'$
 $PI = 12+40.8$
 $PT = 16+26.1$



——— CURVE AS PER PHOTOSTAT — LOSE 18 TREES
 POSSIBLE ALIGNMENT — LOSE 14 TREES
 - - - SURVEYED CENTERLINE — LOSE 11 TREES

Main Park Road
 E-100

M3

BAY CITY