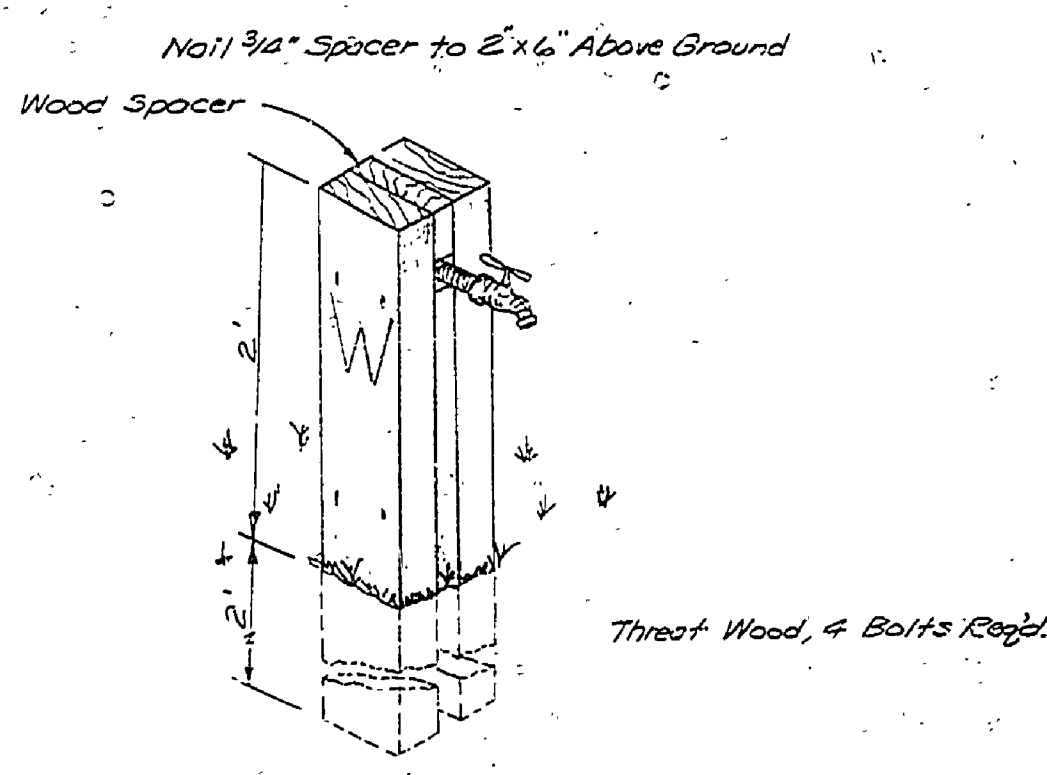
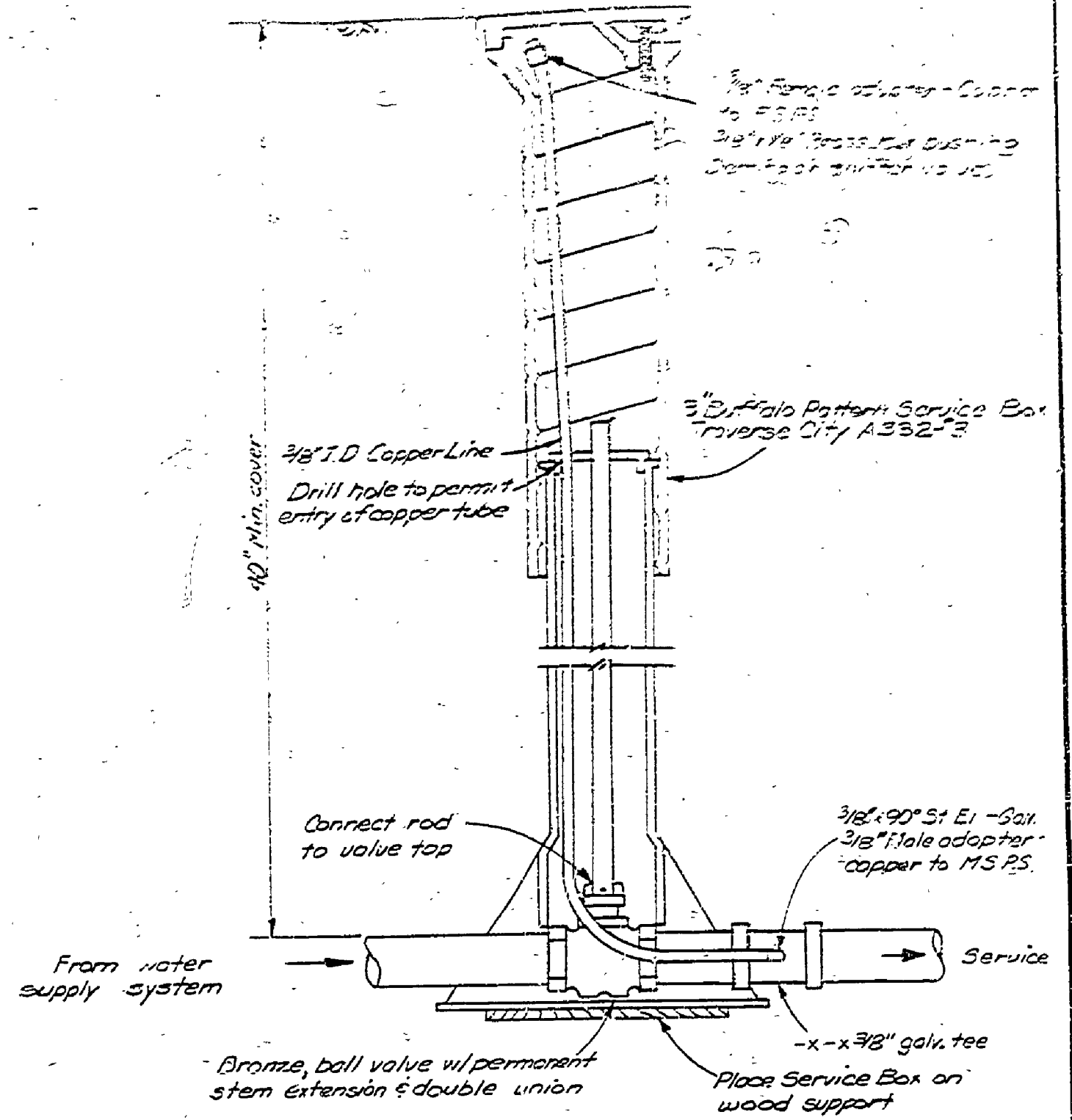
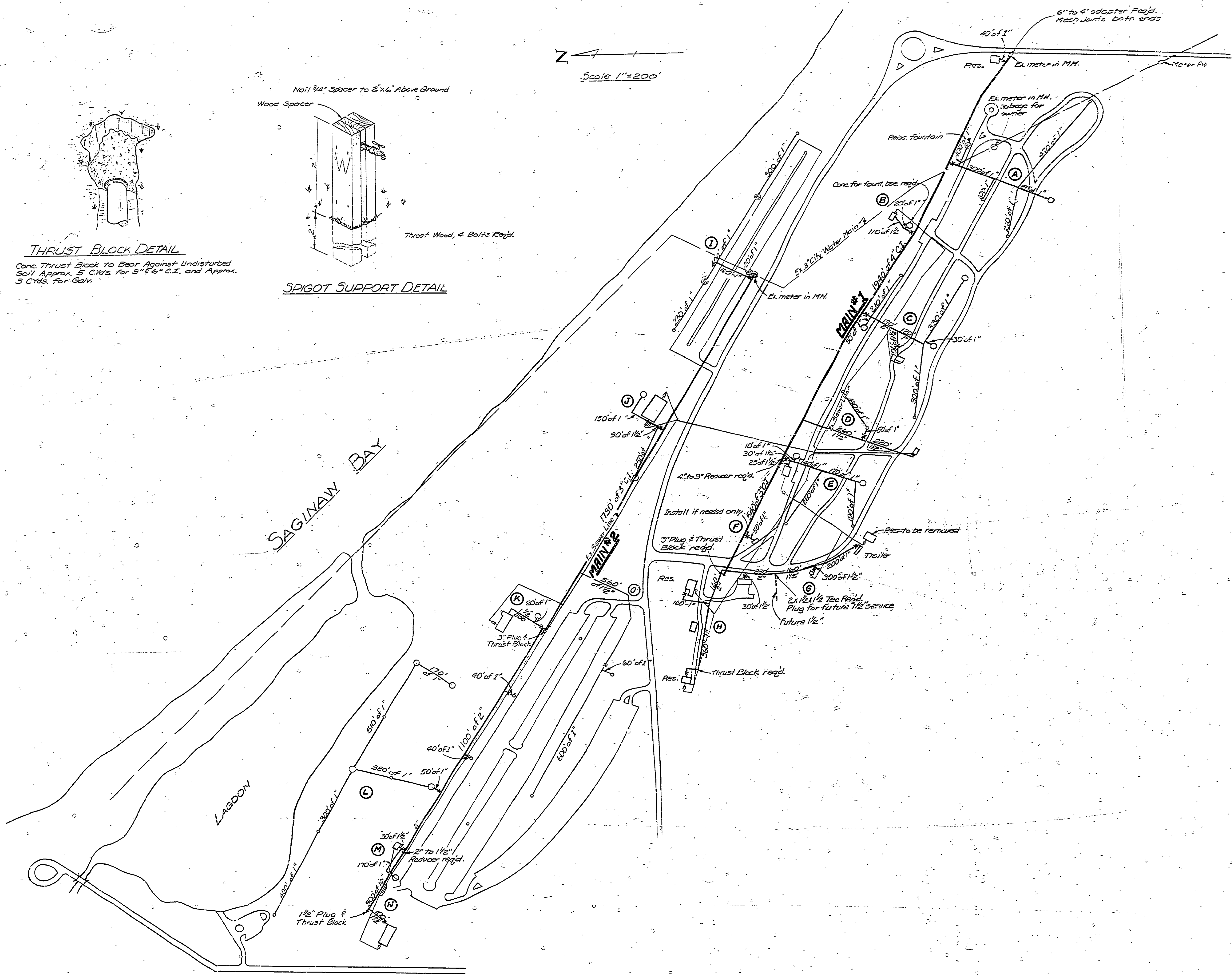


THRUST BLOCK DETAIL
 Conc. Thrust Block to Bear Against Undisturbed Soil Approx. 5 C.Yds. for 5" E.C.I. and Approx. 3 C.Yds. for Galv.



SPIGOT SUPPORT DETAIL

Scale 1"=200'



BALL VALVE & BOX W/ AIR LINE

NOTES:
 All water mains and laterals shown on plans are in their approx. locations. The actual location is to be adjusted in the field to save desirable trees.
 All laterals and buildings are supplied with a snifter valve to be used to force the water from the pipes during winter shutdown. Air pressure of approx. 5psi. would be sufficient to remove water to below frost damage depth.
 Bury for water lines to be 40" min. All lines under roads that will be plowed in winter will have a 50" min. bury.
 Connections to buildings estimated with dresser coupling to be attached to sound pipe from bldg. If pipe from bldg. is in poor condition, field revisions will be required.
 Water fountains were estimated with a 90° Elbow and a union. The individual fountain dewatering device will not have to be hooked up because of the snifter valve setup in each lateral.
 New fountains were specified for all spigot setups. If any existing fountains are salvageable, then the quantity to be ordered will be reduced.
 Place water line marker (2 dia. x 24" long conc. cyl.) at all horiz. bends in water lines, both main and laterals. Cylinders to have "W" inscribed on top.
 Topsoil to be salvaged & replaced on top of replaced soil.

LEGEND
 X - Shutoff w/snifter
 O - Fountain
 • - Spigot

BUILDING COMMITTEE APPROVAL	
BY: _____	DATE: _____
RECOMMENDED FOR APPROVAL: <i>J.P. Yecker</i>	DATE: 12-18-69
RECOMMENDED FOR APPROVAL: <i>E. Patel</i>	DATE: 12-18-69
DIVISION/REGION APPROVAL	
BY: <i>P. O. Dohy</i>	DATE: 2-9-70
APPROVED: <i>H.C. ...</i> DATE: 2-10-70	

SURVEYED BY: <i>J. NELSON</i>	11-69	DRAWN BY: <i>H. RICE & C.E. MASSEY</i>	11-69	NO. 1	DATE	BY	REVISIONS	NO. 3	DATE	BY	REVISIONS	MICHIGAN DEPARTMENT OF NATURAL RESOURCES	LINE LOCATION & CONST. DETAILS	AREA OR PARK: <i>BAY CITY STATE PARK</i>	PROJECT NO: <i>1054</i>
DESIGNED BY: <i>J. NELSON</i>	DATE	CHECKED BY:	DATE	NO. 2	DATE	BY	REVISIONS	NO. 4	DATE	BY	REVISIONS	DEPARTMENT OF NATURAL RESOURCES	SHEET TITLE	PROJECT: <i>REPLACEMENT OF WATER LINES</i>	SHEET 1 OF 1