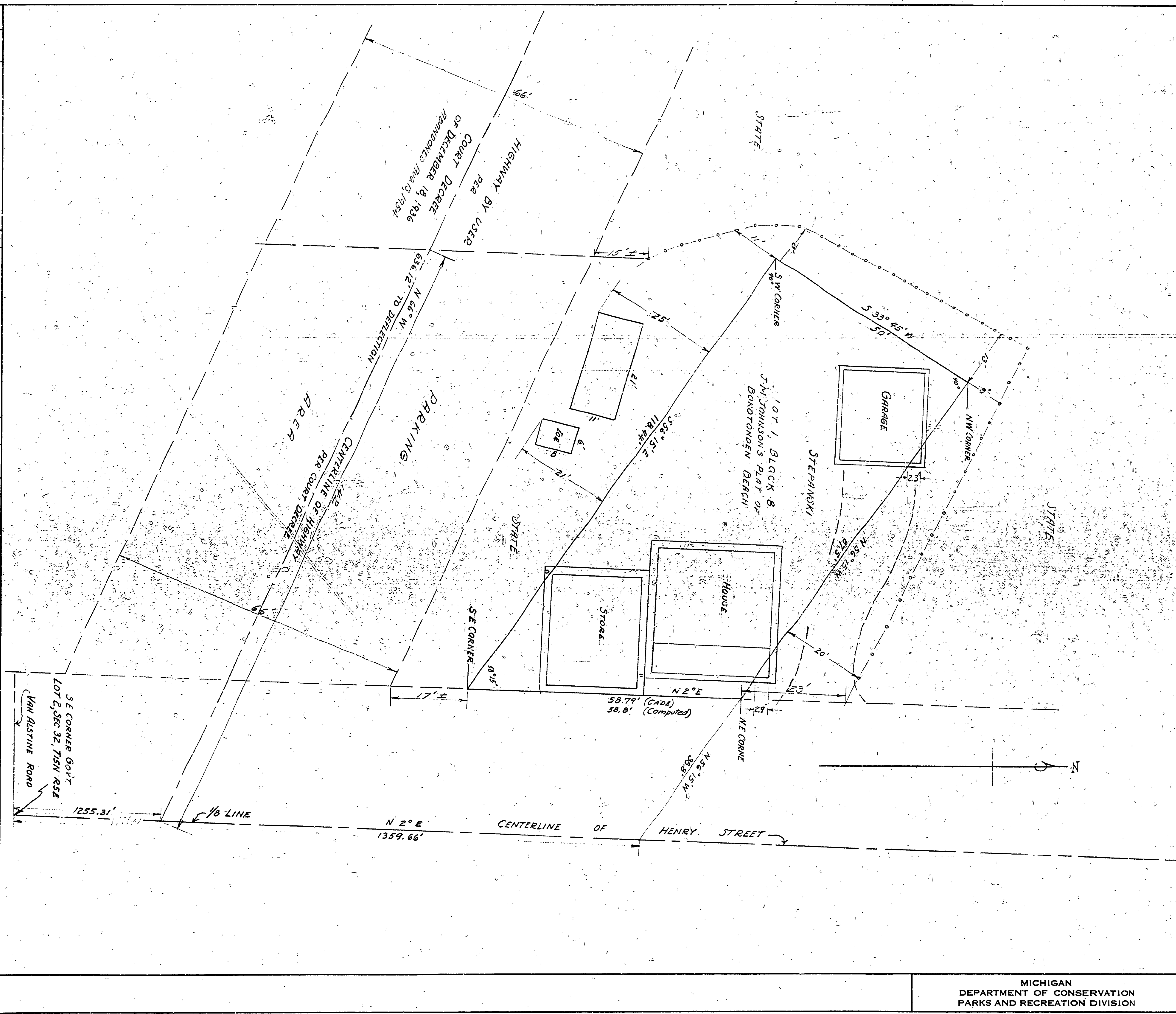


DRAWN BY	CHECKED BY	REVIEWED BY SECTIONS		DATE	APPROVED BY	ASSISTANT CHIEF IN CHARGE OF DESIGN	REVISIONS			DATE
		ARCHITECTURAL	ENGINEERING				LANDSCAPE	No.	DATE	
							1			
							2			
							3			
							4			
							5			
							6			



BAY CITY STATE PARK
 LAND OWNERSHIP
 STEPANSKI LOT AND HIGHWAY
 PER COURT DECREE OF DEC. 18, 1936

Drawn by C.F. Boehler, October 15, 1952
 FROM SURVEY BY C.M. CADE, JUNE 19, 1934
 AND DECREE OF CIRCUIT COURT IN CHANCERY
 DECEMBER 18, 1936

SCALE 1/4" = 10 FT.

ENCROACHMENTS ON STATE OWNERSHIP

R-7

MICHIGAN
 DEPARTMENT OF CONSERVATION
 PARKS AND RECREATION DIVISION

BAY CITY STATE PARK
 LAND OWNERSHIP

SHEET NO. _____ OF _____
 PLAN NO. R-7