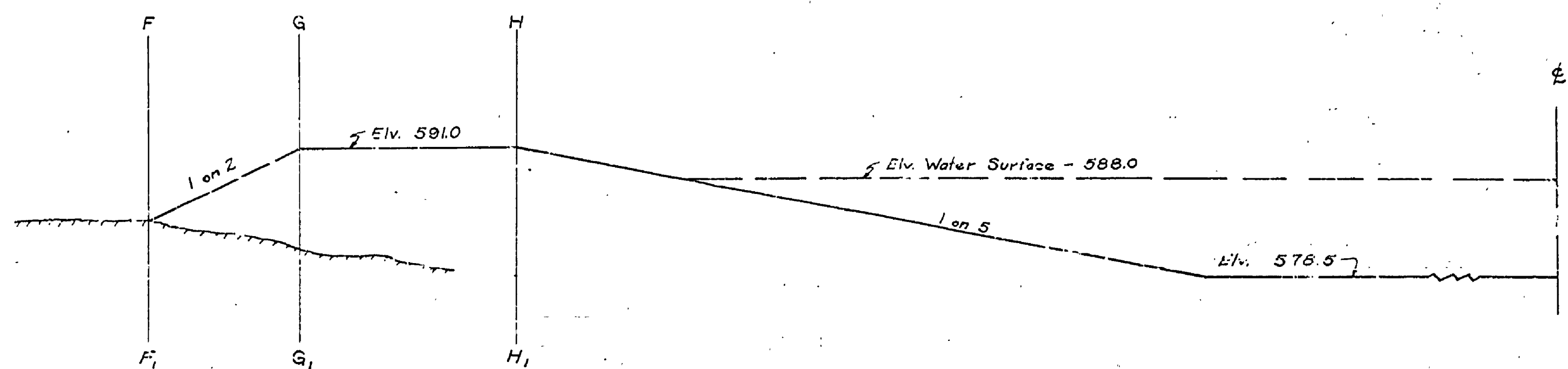
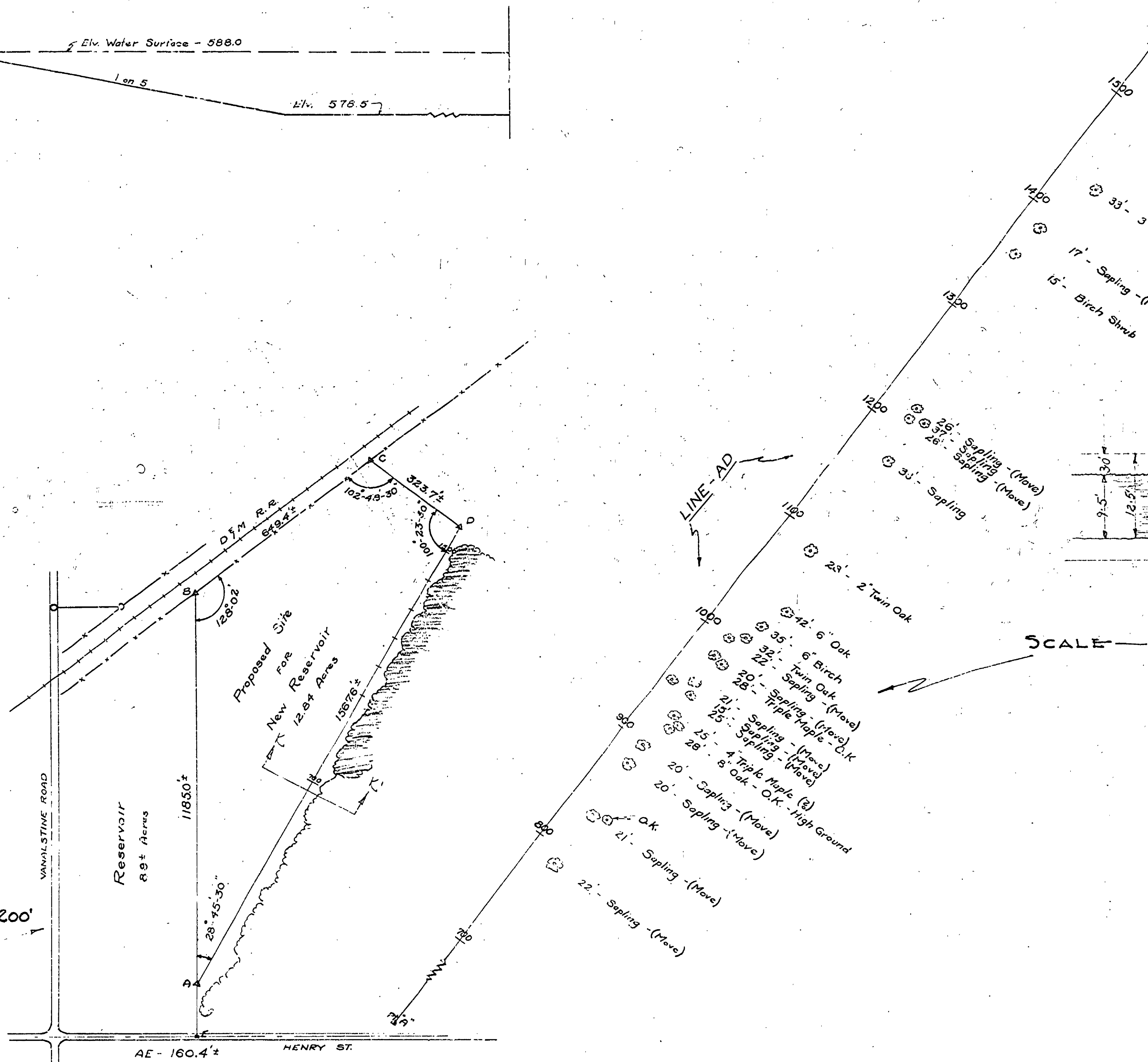


TYPICAL CROSS-SECTION OF PROPOSED RESERVOIR



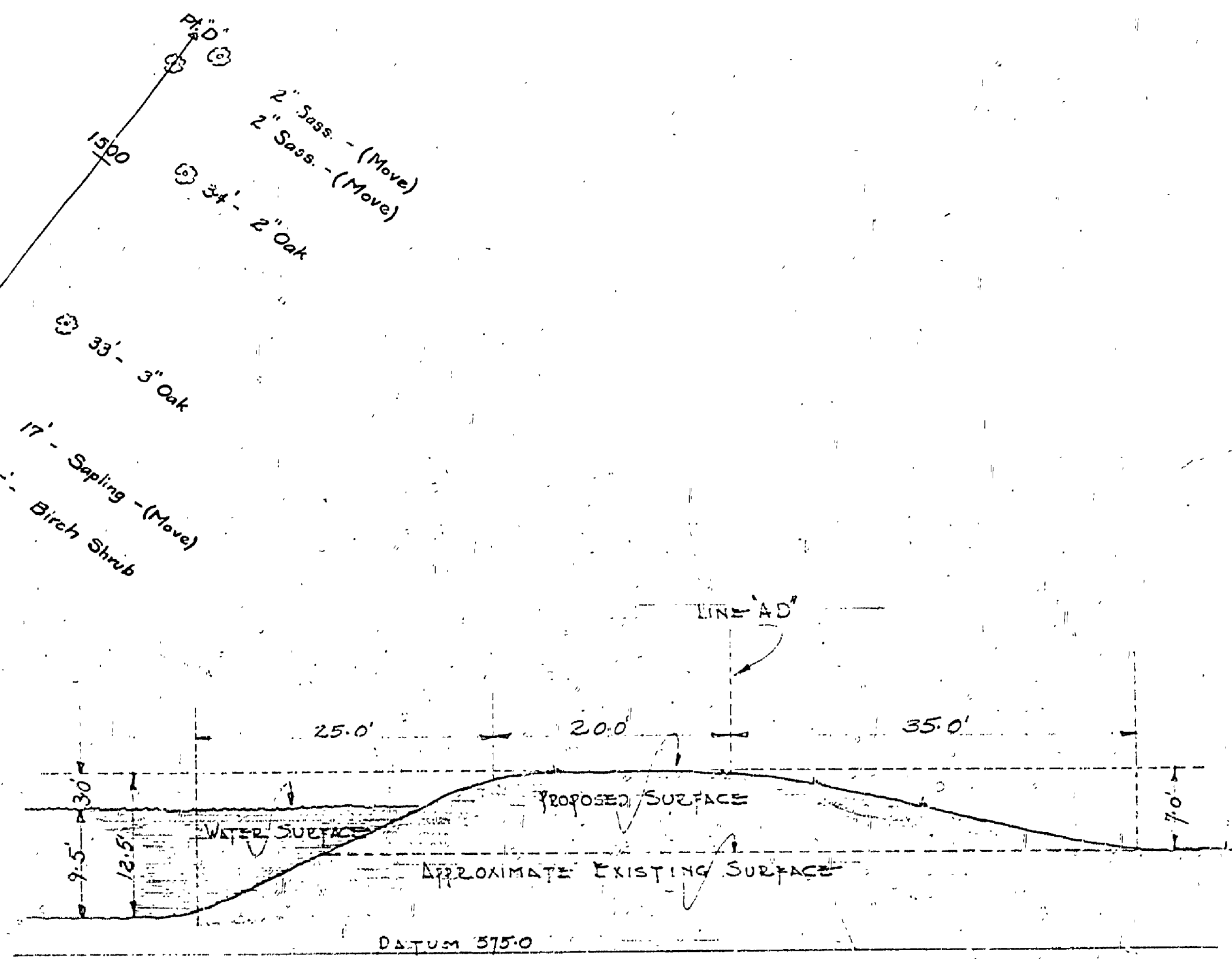
Boundary Line --- Dike Section

AB --- HH,  
 SC --- FF,  
 CD --- GG,  
 DA --- GG,



SCALE - 1" TO 200'

SCALE - 1" TO 50'



SECTION KK  
 SCALE - 1" TO 10'

2 MAY 1935

U.S. DEPARTMENT OF THE INTERIOR		STATE OF MICHIGAN	
NATIONAL PARK SERVICE		BAY CITY STATE PARK - S.P. 7	
STATE PARK		PROJECT No.	
EMERGENCY		DESIGNER	CHECKED BY
CONSERVATION WORK		DR. BY	DATE DR. 4-30-35
CHECKED BY	DISTRICT OFFICER	PROCUREMENT OFFICER	ALLOTMENT AVAILABLE \$
DATE		ALTERNATE	
RECOMMENDED FOR CONSTRUCTION	DISTRICT OFFICE ENGINEER	SUBMITTED BY	SUPT. STAT. PARKS
DATE			FILE No.
APPROVED FOR CONSTRUCTION	DISTRICT INSPECTOR	APPROVED	MICH. CONSERVATION COMM.
DATE			

Reservoir City of Bay City