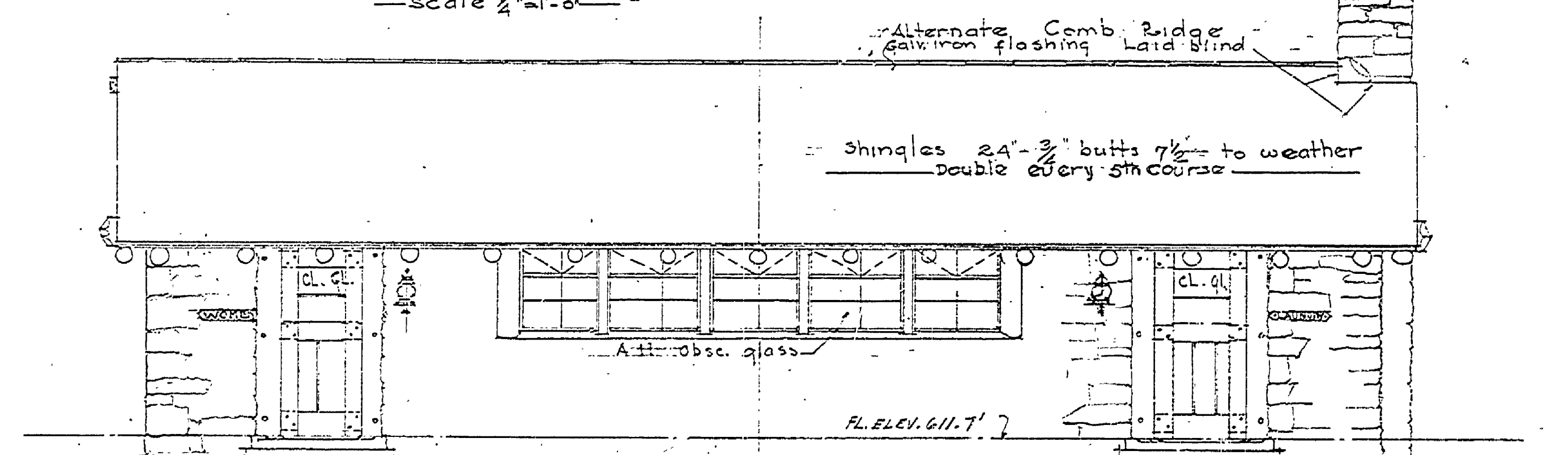
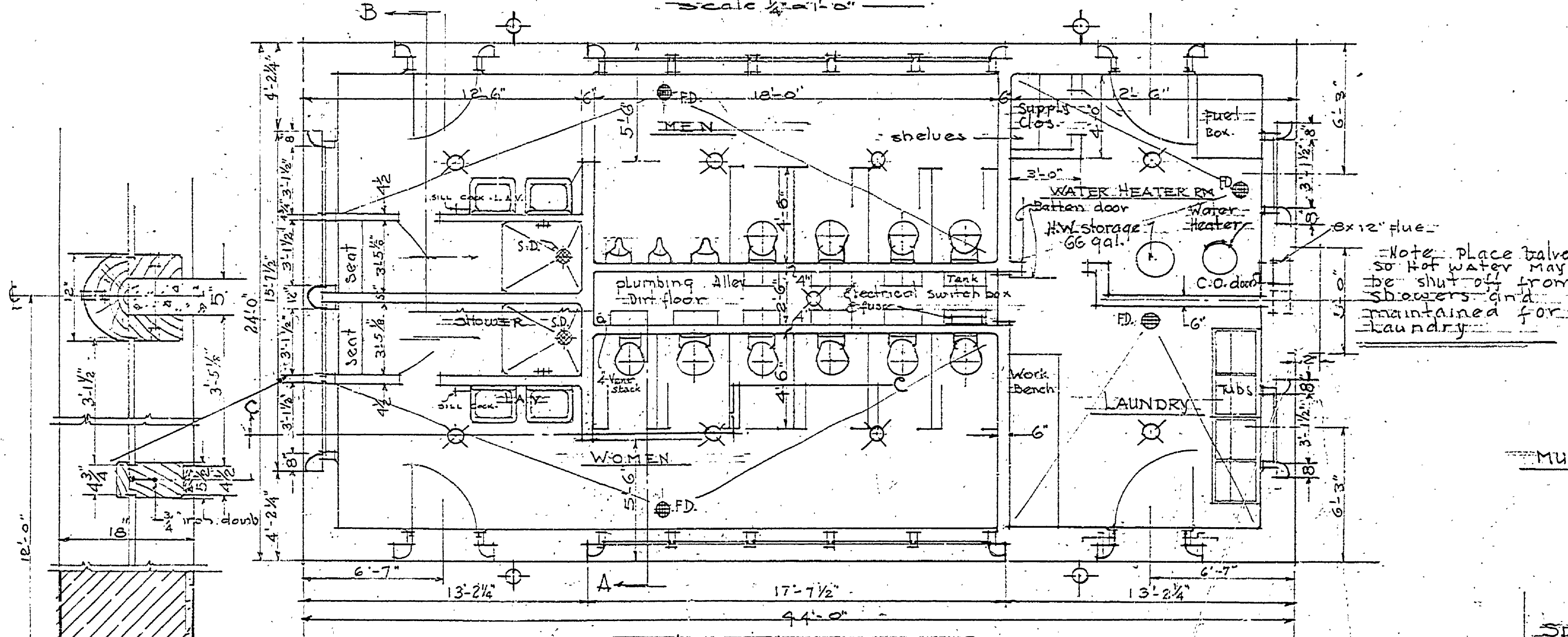


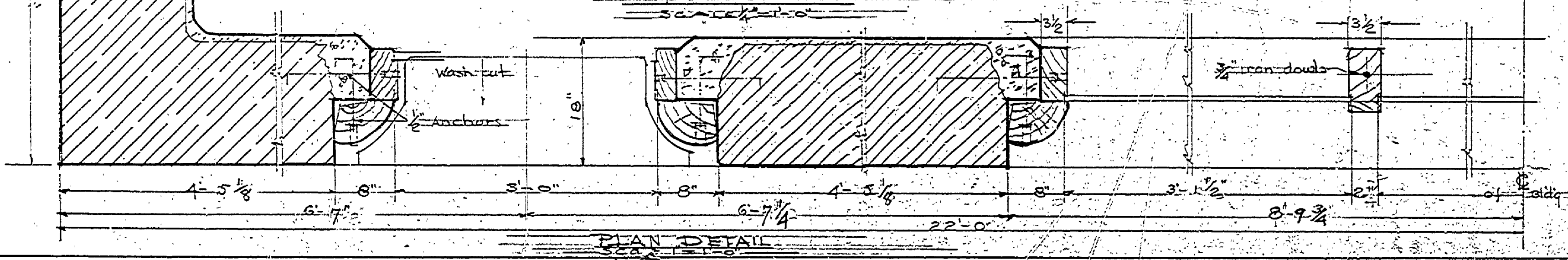
WEST ELEVATION
Scale 1/4" = 1'-0"



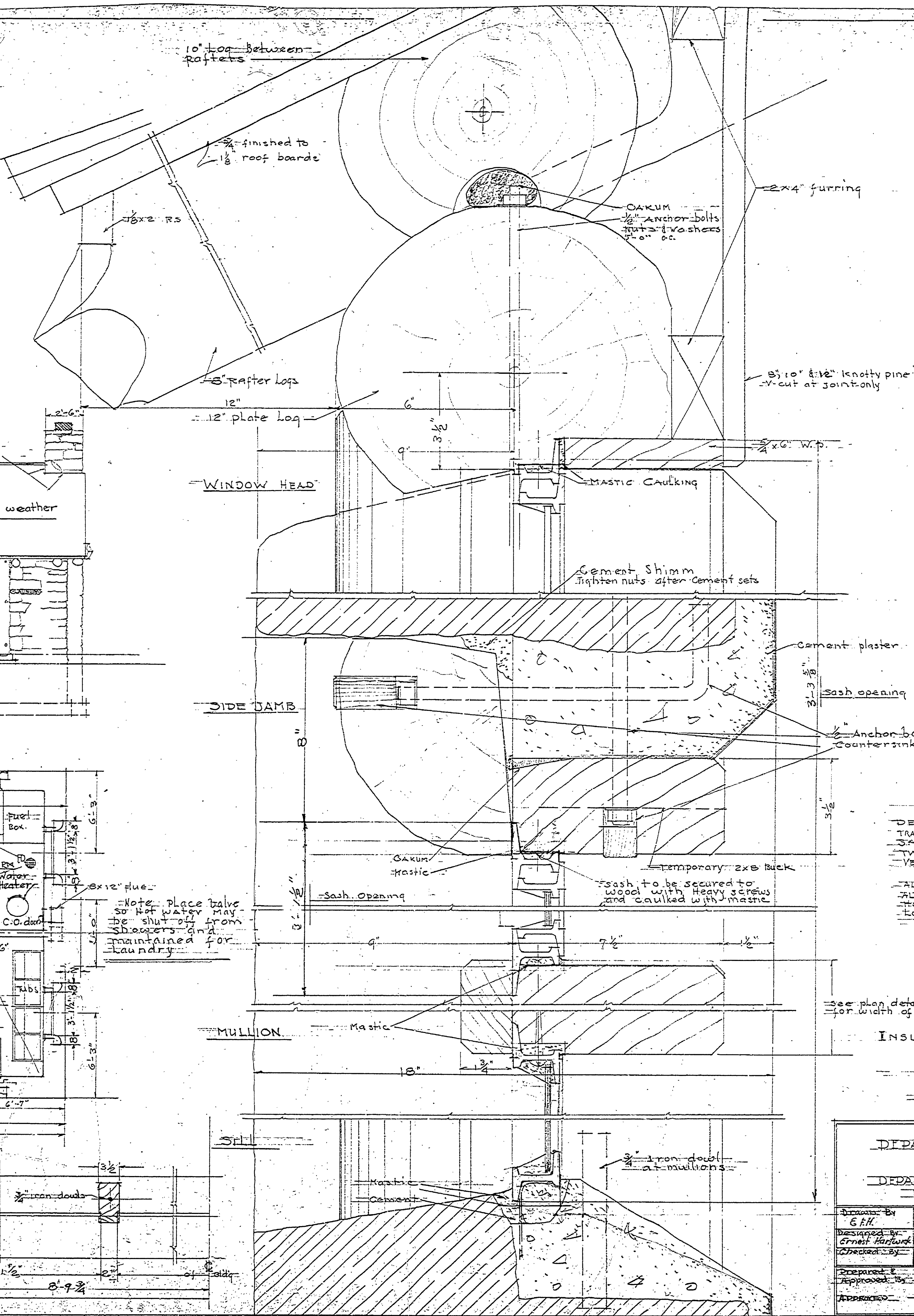
SIDE ELEVATION
OPPOSITE SIDE SIMILAR
Scale 1/4" = 1'-0"



FLOOR PLAN
Scale 1/4" = 1'-0"



PLAN DETAIL
Scale 1/4" = 1'-0"



STEEL SASH
 DETAILED FOR SASH TO OPEN IN TRANSOM TO BE HINGED AT BOTTOM.
 SASH APPROX. 3'-1 1/2" wide & 3'-1/2" high.
 TWO LIGHTS wide & 3' high.
 VENTILATED TRANSOM TO BE 1' HIGH.

ALL SASH TO BE GLAZED AS NOTED ON PLANS.
 ALL SASH TO BE EQUIPPED WITH DEVICE FOR HOLDING SASH IN OPEN POSITION AND LOCKING DEVICE WHEN CLOSED.

See plan detail for width of mullions

INSURANCE No. 6 A-97

Note: Revised 5/17/40
 Dimensions changed to conform to steel sash purchased.
 Not added for control of hot water.

| | | |
|---|--|----------------------------------|
| MICHIGAN DEPARTMENT OF CONSERVATION IN COOPERATION WITH UNITED STATES DEPARTMENT OF THE INTERIOR NATIONAL PARK SERVICE | | |
| Designed By E. H. H. | COMBINATION LAUNDRY & TOILET BUILDING | Plan |
| Designed By Ernest Harford | SOUTH LAKE STATE PARK | Scale as shown Detail portion |
| Checked By | | DATES 10/39 |
| Prepared & Approved By | STATE PARKS AUTHORITY | DATE |
| Approved | INSPECTOR | DATE |