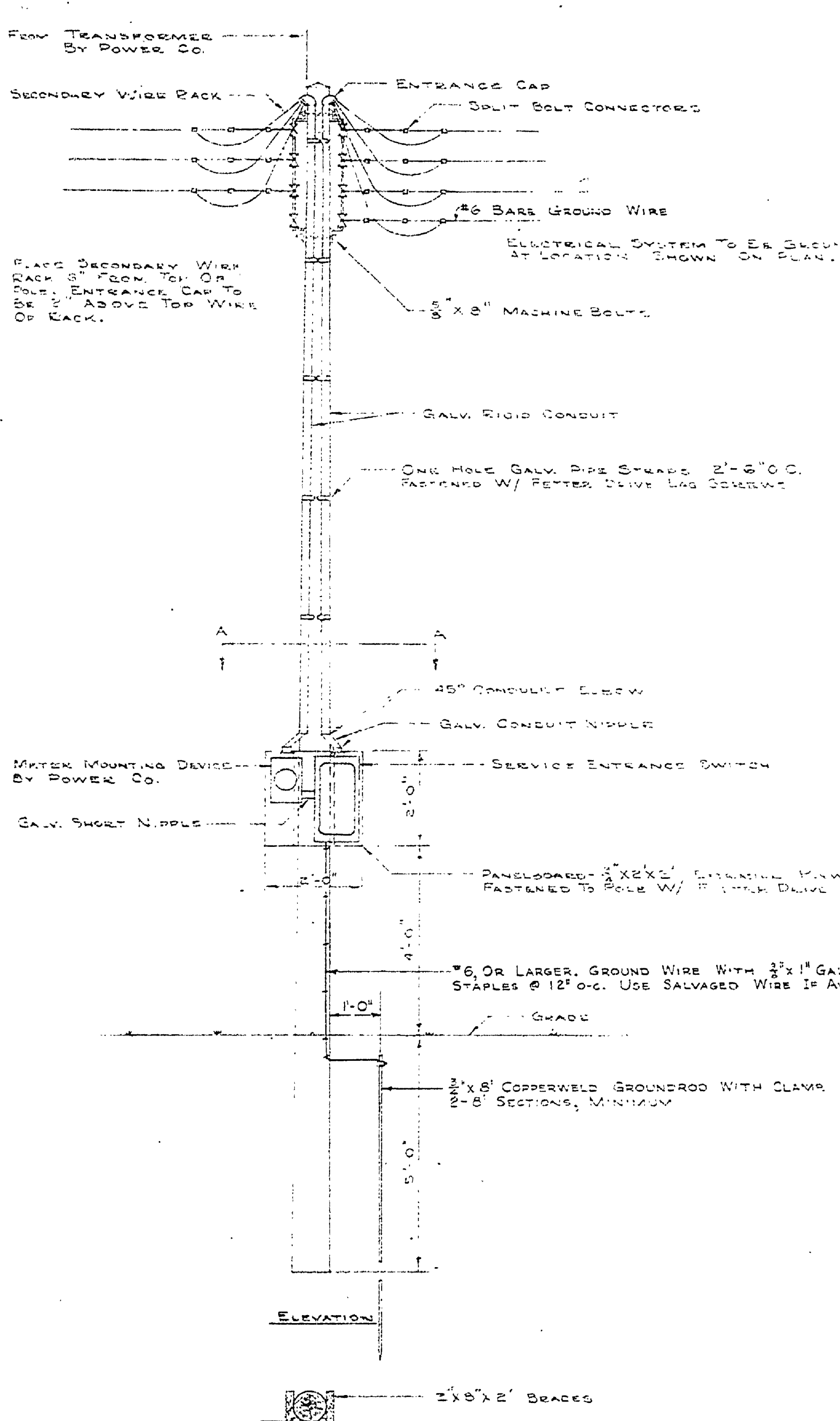
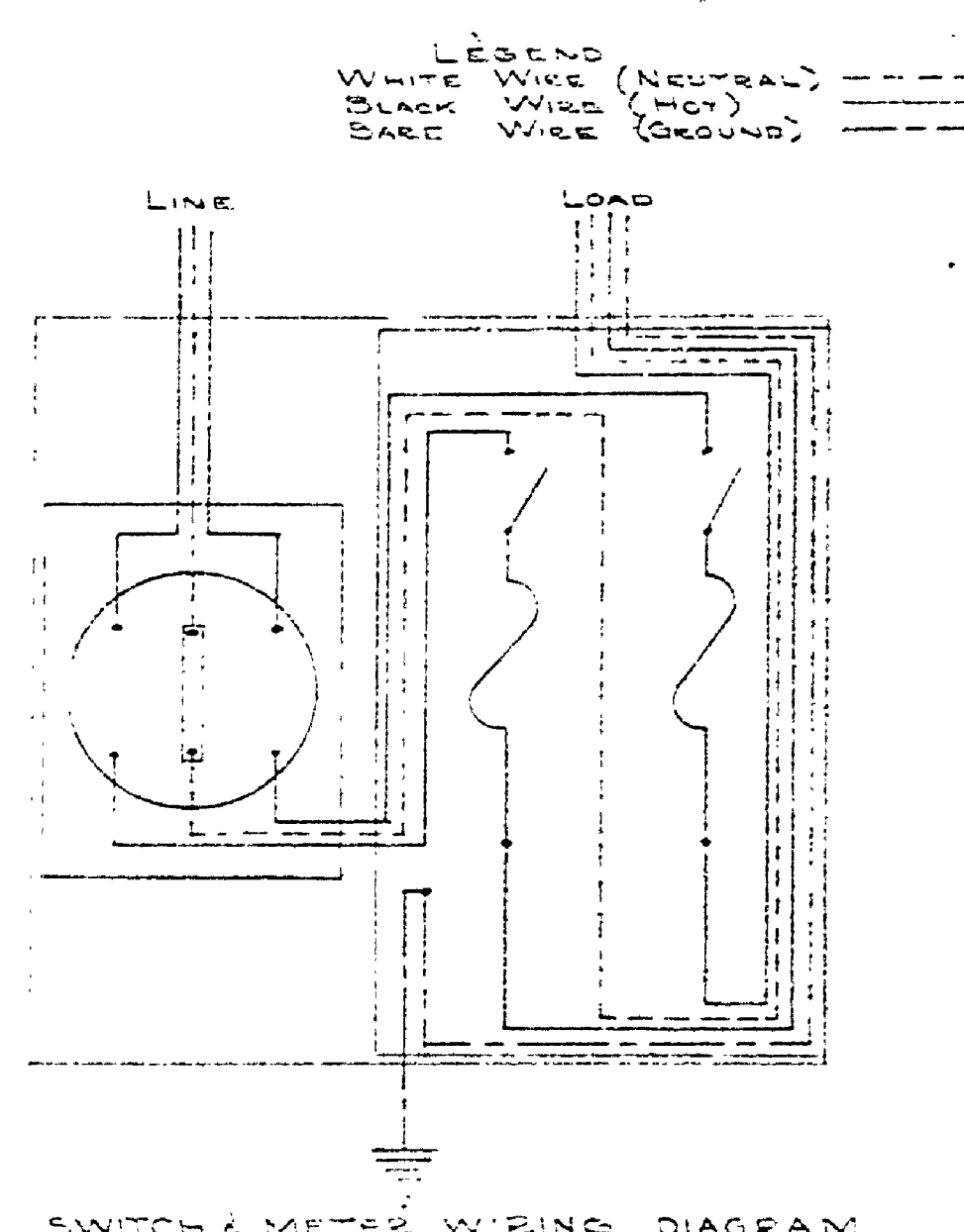


DESIGNED BY	DATE	REVIEWED	DATE	APPROVED	DATE	NO.	DATE	BY	REVISIONS
B.H.S.	10-7-63	ARCHITECTURAL	11-11-63		11-11-63	1	8-1-63	J.Y.	1
J.Y.	9-7-63	ENGINEERING	11-11-63		11-11-63	2	2-6-63	B.M.C.	2
		LANDSCAPE	11-11-63		11-11-63	3	3-15-63		3
						4			4
						5			5
						6			6

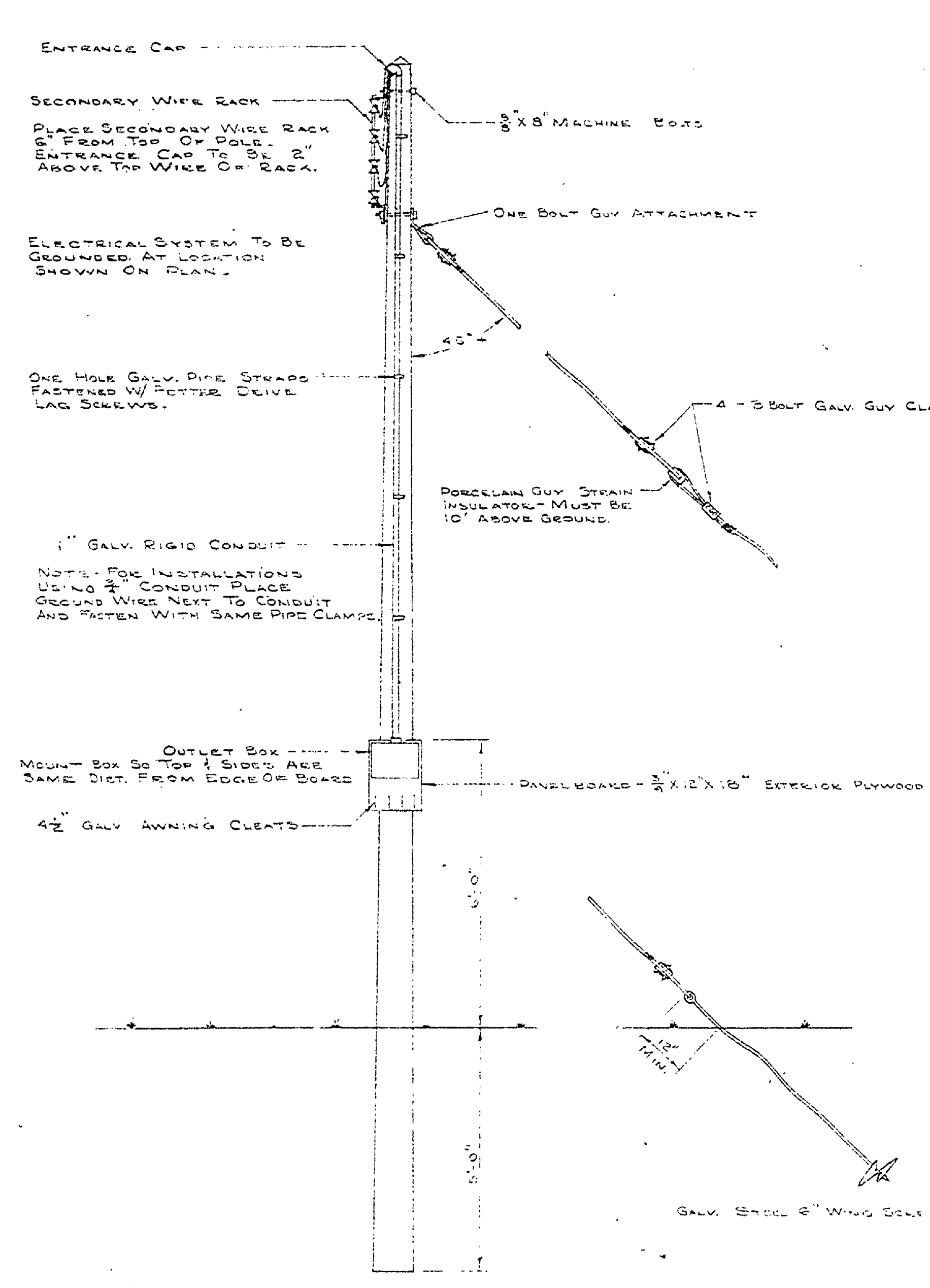


SECTION A-A  
SERVICE ENTRANCE SWITCH & METER  
SCALE 1/4" = 1'-0"

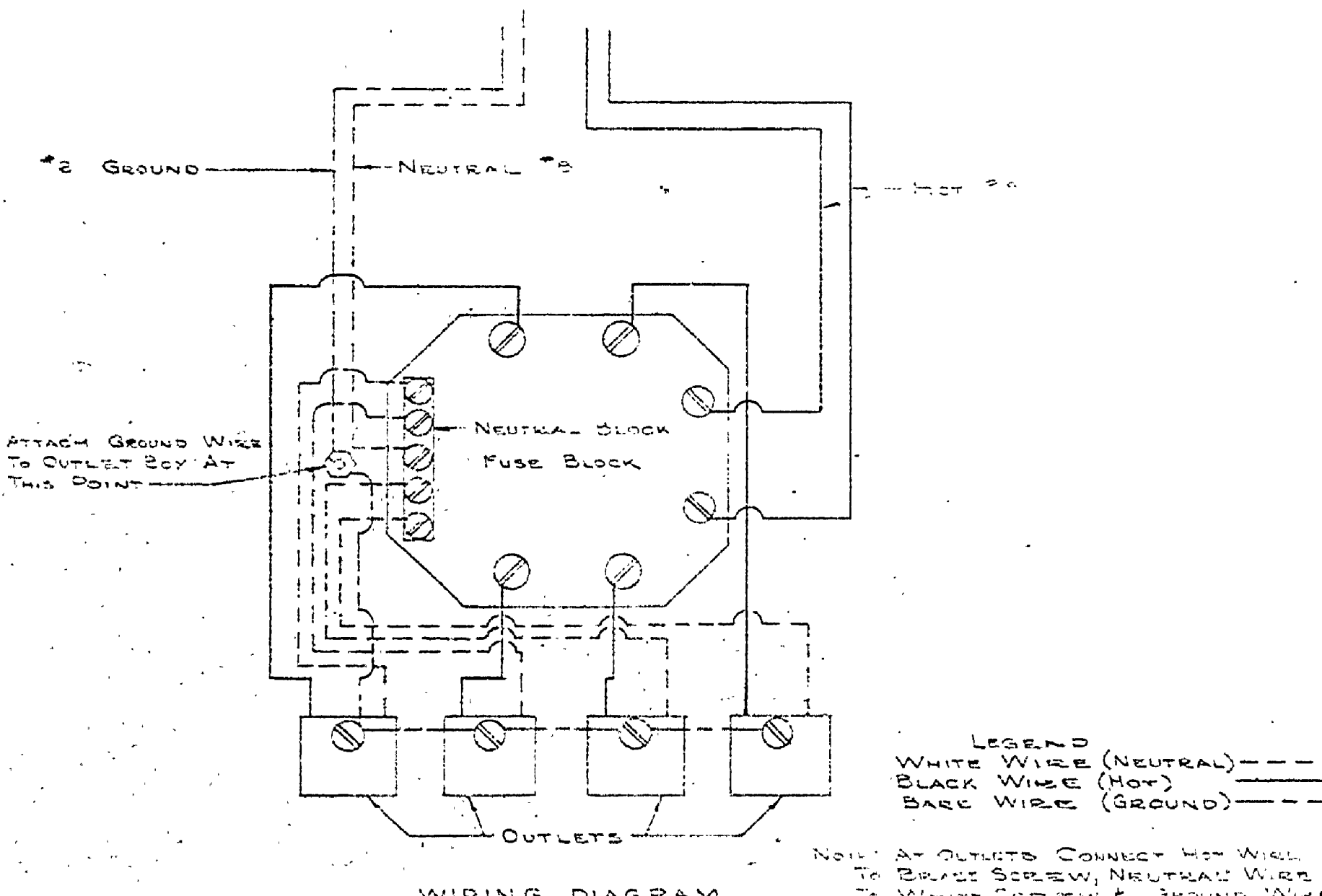


SWITCH & METER WIRING DIAGRAM

BILL OF MATERIAL		QUANTITY	
ITEM		100 AMP	200 AMP
Service Entrance Switch - Heavy Duty Safety Switch - 3 Wire		1	1
3 Pole 2 Fuse S/N 240 Volt Raintight NEMA Type 3		1	1
W/ COVER INTERLOCK & PADLOCK ATTACHMENT TO LOCK SWITCH			
"OFF" OR "ON" & COVER "CLOSED"			
30" Cedar Pole w/ 5" Minimum Top			
2 Spool H.D. Secondary Wire Rack w/ Insulators (3 Spacing)		2	
1" Galv. Rigid Conduit	15'-30"	2'-30"	
" " " Short Nipple	"-4"	2'-4"	
" " " Nipple 6" Long	"-1"	2'-1"	
" " " 45° Elbow	"-4"	"-4"	
" " " Bushing	"-2"	"-2"	
" " " Locknut	"-2"	"-2"	
" " " Entrance Cap	"-2"	"-2"	
" " " Pipe Straps One Hole	"-10"	"-10"	
Fetter Drive Lag Screw 1/2" x 2 1/2"		12	
Type RHW Str. - 20-DB Cu. Wire	150'-42	150'-42	
1/2" x 8" Machine Bolt & Washers		2	
Split Bolt Connector	2'-2"	2'-2"	
Panelboard - 2' x 2' x 2' Exterior Plywood		1	
1/8" Str. Bare Cu. Wire		25'	
Groundrod - 1/2" x 8" Copperweld Sectional Rod, Oliver #729448		2, 8' Sects. (Min)	
Ground Wire Clamp, 1/2" (Safety Set Screw), Oliver #76493		1 ea.	
1/2" Driving Stud, Oliver #729535		1 ea.	
1/2" Bronze Coupling, Oliver #79535		2 (Minimum)	



OUTLET BOX & POLE DETAILS  
SCALE 1/4" = 1'-0"



WIRING DIAGRAM

BILL OF MATERIAL		QUANTITY	
ITEM			
TRAILER OUTLET BOX W/ 1" HUB IN TOP		1	
25' Cedar Pole w/ 5" Minimum Top		1	
1/8" Bare Wire (IN CONDUIT) WHITE		20'	
" " " " " BLACK		40'	
1" Galv. Rigid Conduit		12'-4"	
" " " " " ENTRANCE CAP		1	
" " " " " PIPE STRAPS 1 HOLE		5	
4 Spool H.D. Secondary Wire Rack w/ Insulators (3 Spacing)		1	
SPLIT BOLT CONNECTOR (SIDE PEG PLAN)		4	
1/2" x 8" MACHINE BOLT		2	
GALV. STEEL ROUND WASHER FOR 1/2" BOLT		4	
1/2" x 2 1/2" FETTER DRIVE LAG SCREW		9	
1/2" GALV. STEEL ANCHORS		4	
1/2" x 8" NICKEL PLATED OVAL HEAD WOOD SCREWS		11	
PANELBOARD - 2' x 2' x 2' EXTERIOR PLYWOOD		1	
20 AMP FUSEBLOCK		4	
1/8" STR. BARE CU. WIRE		20'	
GUY MATERIAL			
1/2" STRANDED GUY WIRE - DOUBLE GALV.		32'	
4" x 3 BOLT GALV. GUY CLAMPS		4	
1/2" PORCELAIN GUY STRAIN INSULATOR		1	
1 BOLT GALV. GUY ATTACHMENT		1	
1/2" GALV. STEEL WING SCREW ANCHOR		1	

MICHIGAN  
DEPARTMENT OF CONSERVATION  
PARKS AND RECREATION DIVISION

STANDARD PLAN  
SERVICE ENTRANCE SWITCH  
AND  
OUTLET BOX

SHEET  
NO. \_\_\_\_\_  
OF \_\_\_\_\_

PLAN NO.  
\_\_\_\_\_

BURLAKE B2107-1-63