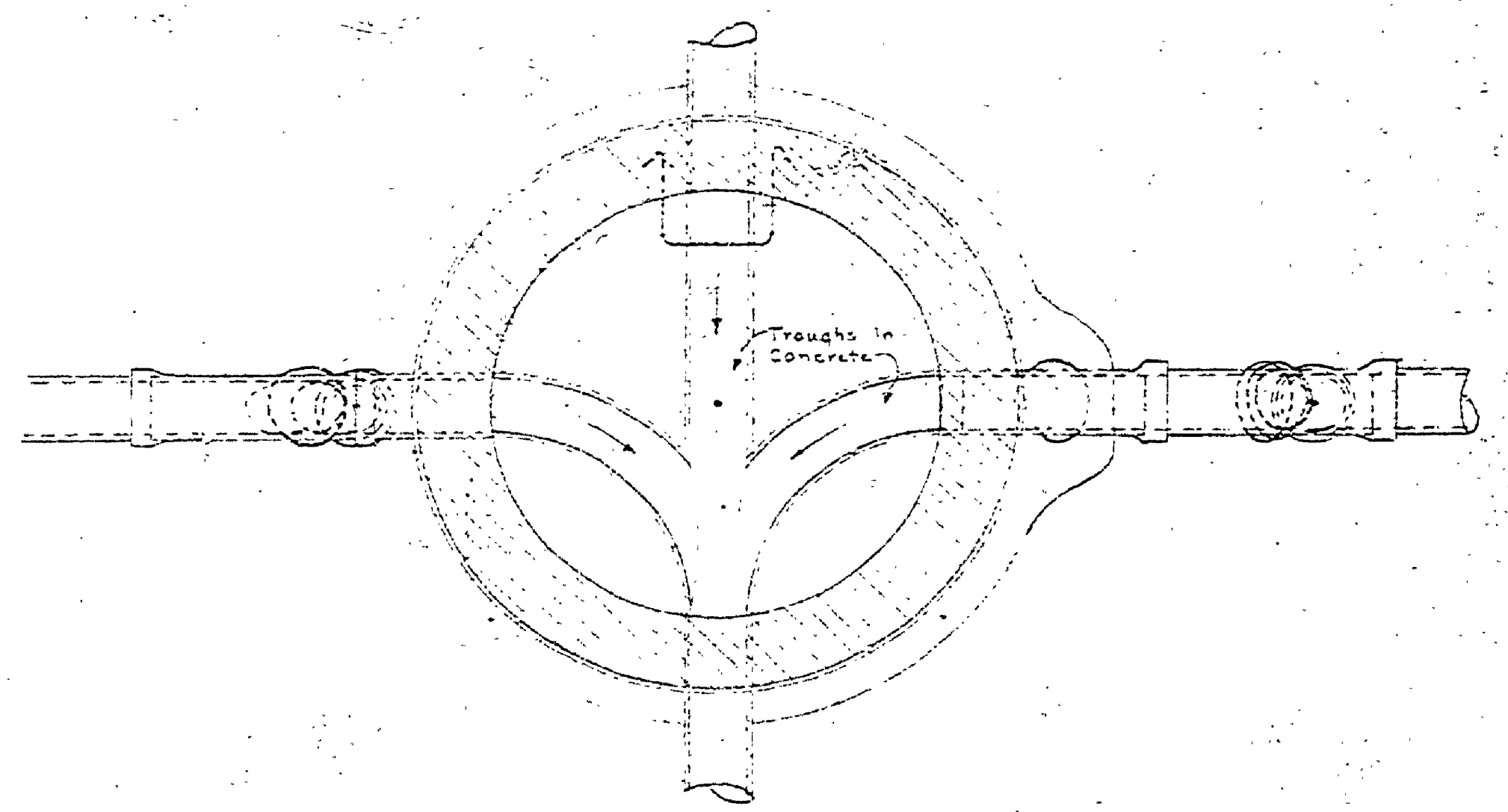


NO.	DATE	BY	REVISIONS
1			4
2			5
3			6

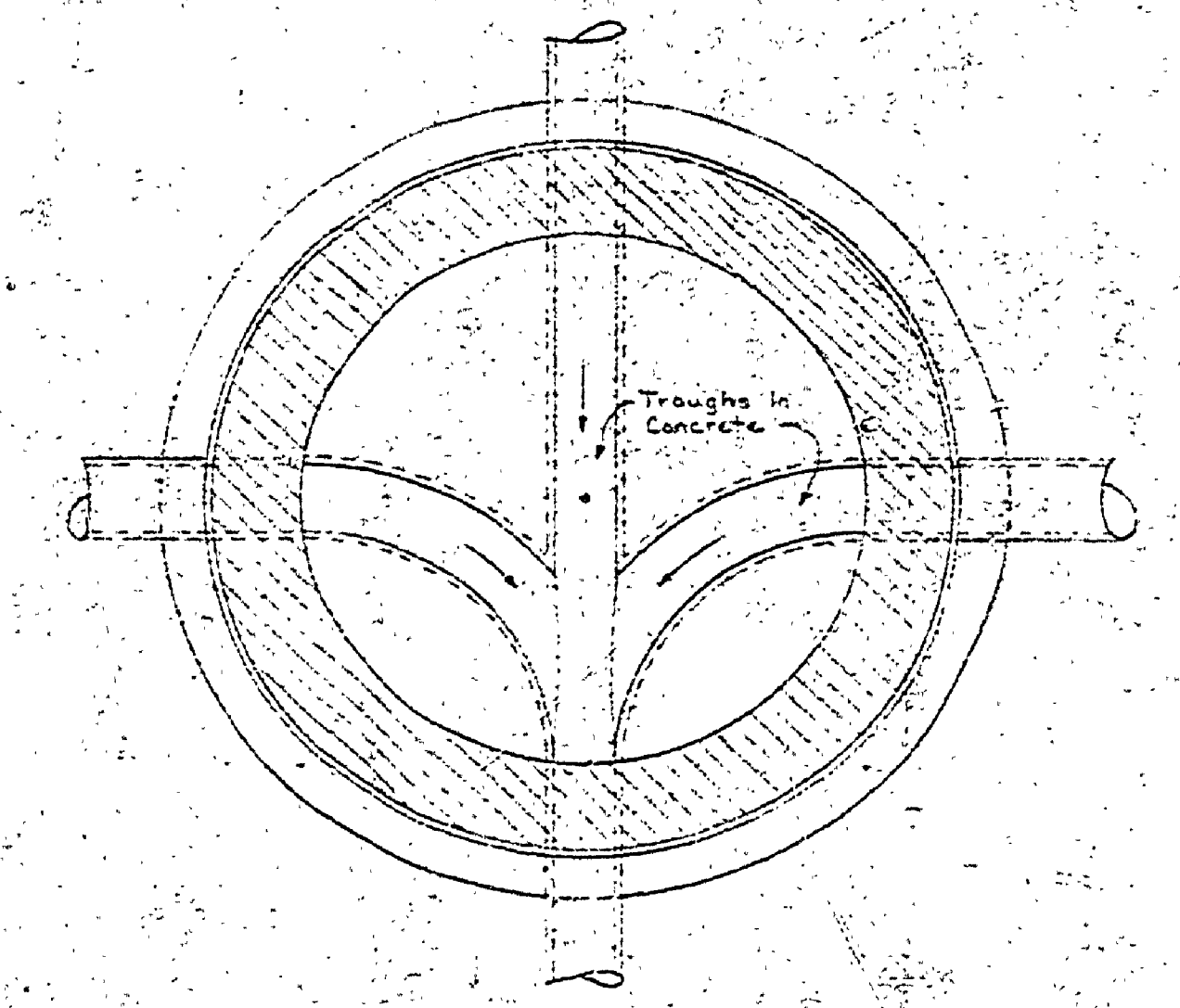
DATE	APPROVED BY	REVIEWED BY SECTIONS	DATE	APPROVED BY
3-11-47		ARCHITECTURAL ENGINEERING LANDSCAPE	3-11-47	

DATE	APPROVED BY	REVIEWED BY SECTIONS	DATE	APPROVED BY
2-17-44		ARCHITECTURAL ENGINEERING LANDSCAPE	2-17-44	

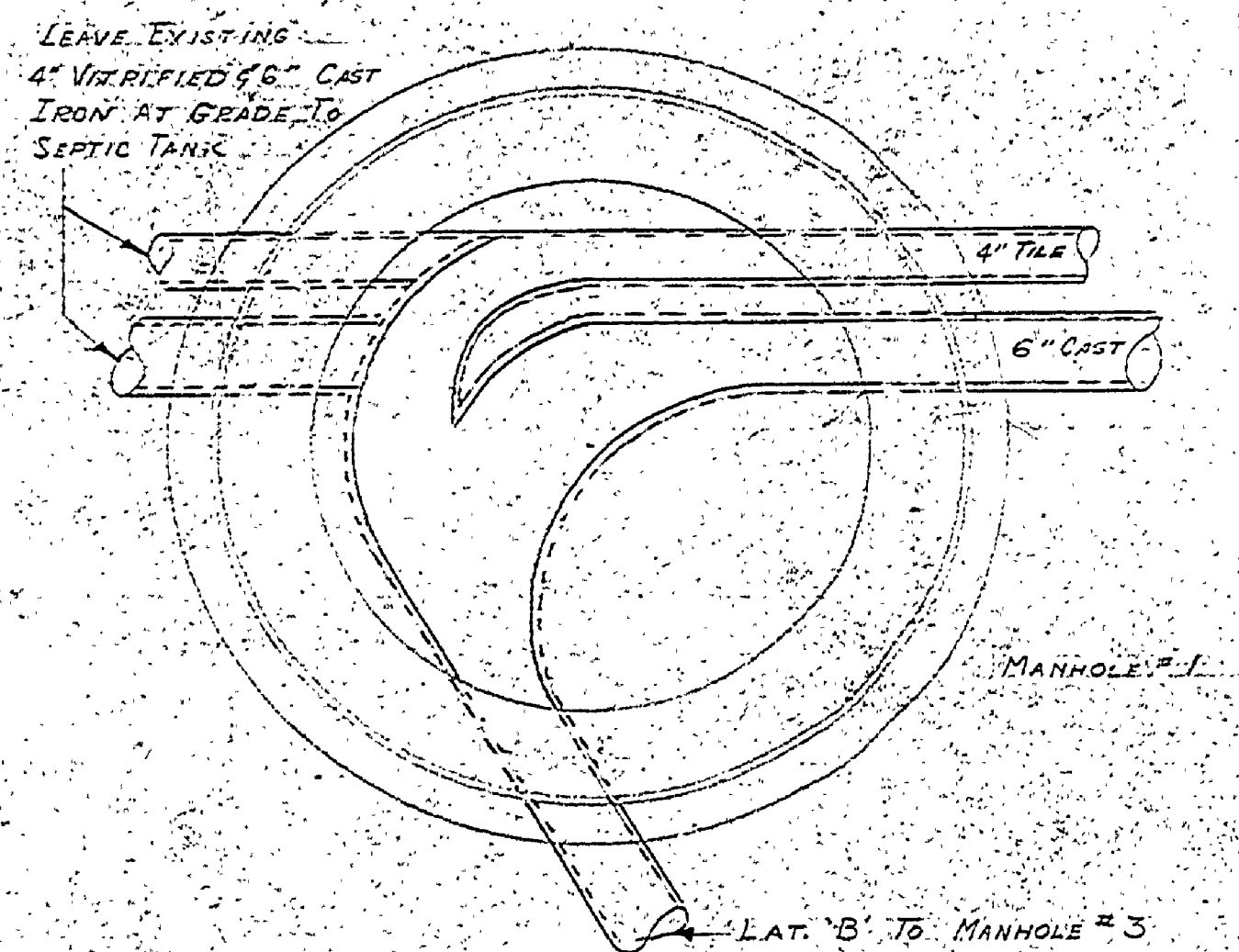
DATE	APPROVED BY	REVIEWED BY SECTIONS	DATE	APPROVED BY
2-17-44		ARCHITECTURAL ENGINEERING LANDSCAPE	2-17-44	



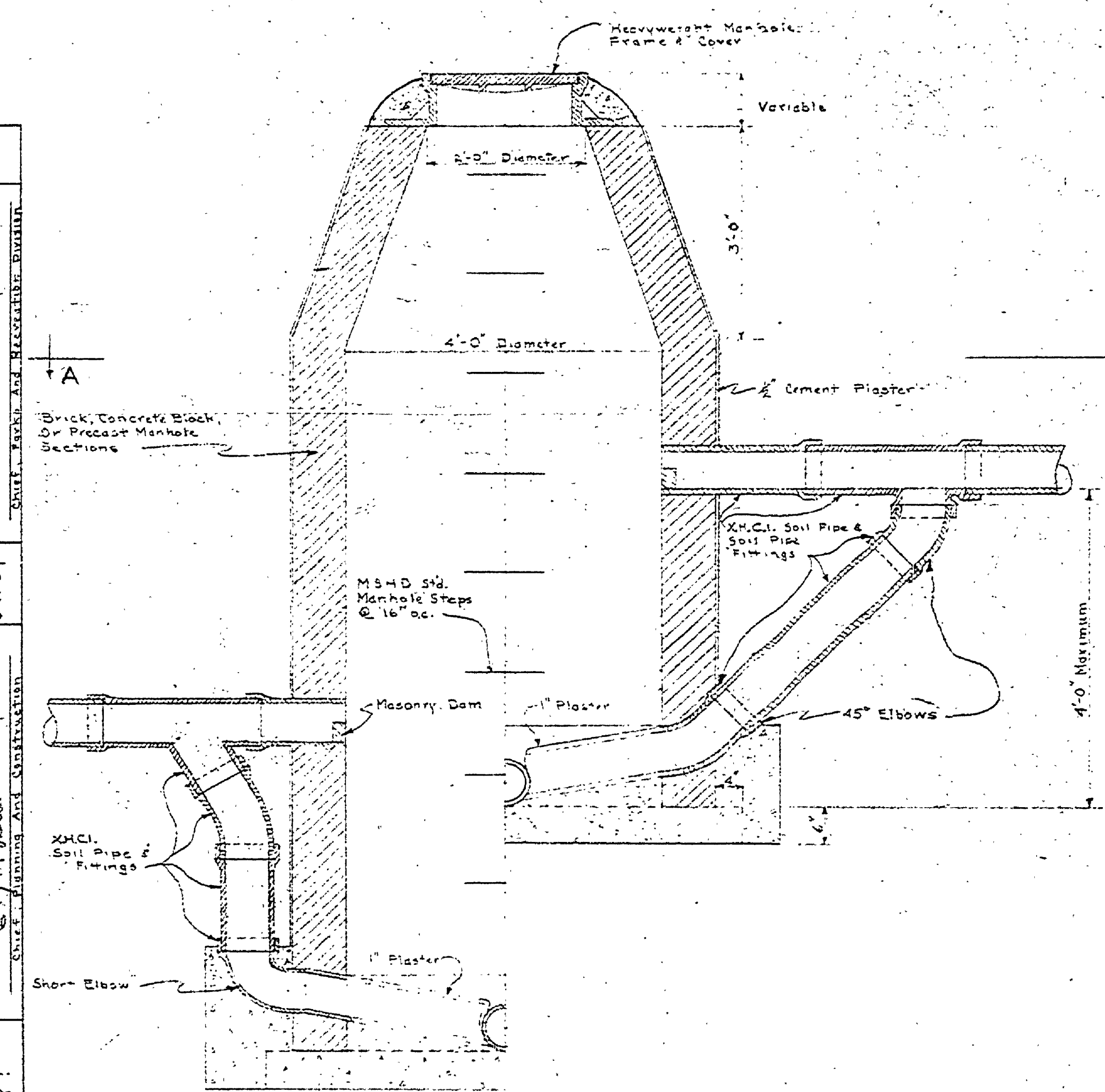
PLAN SECTION A-A



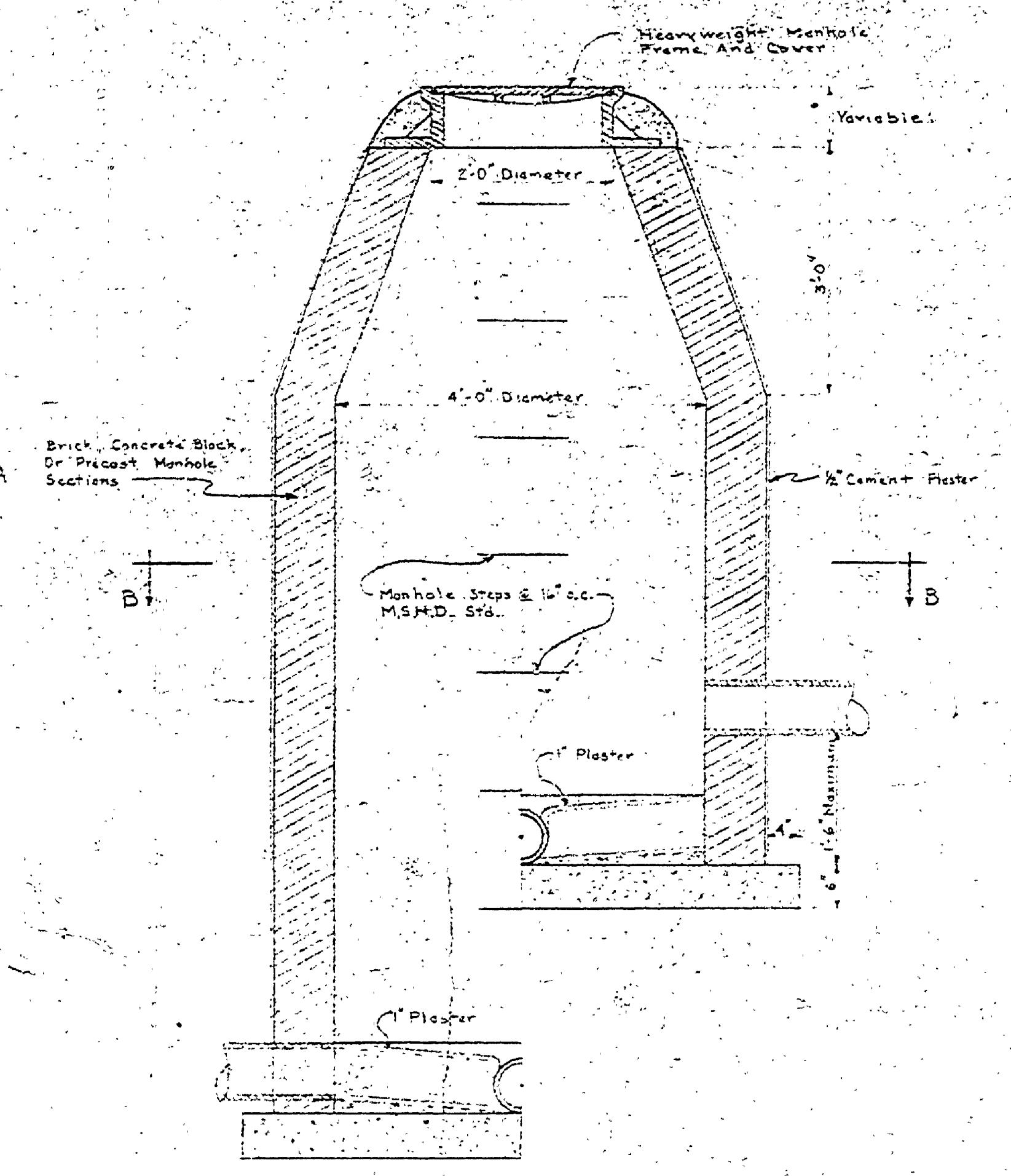
PLAN SECTION B-B



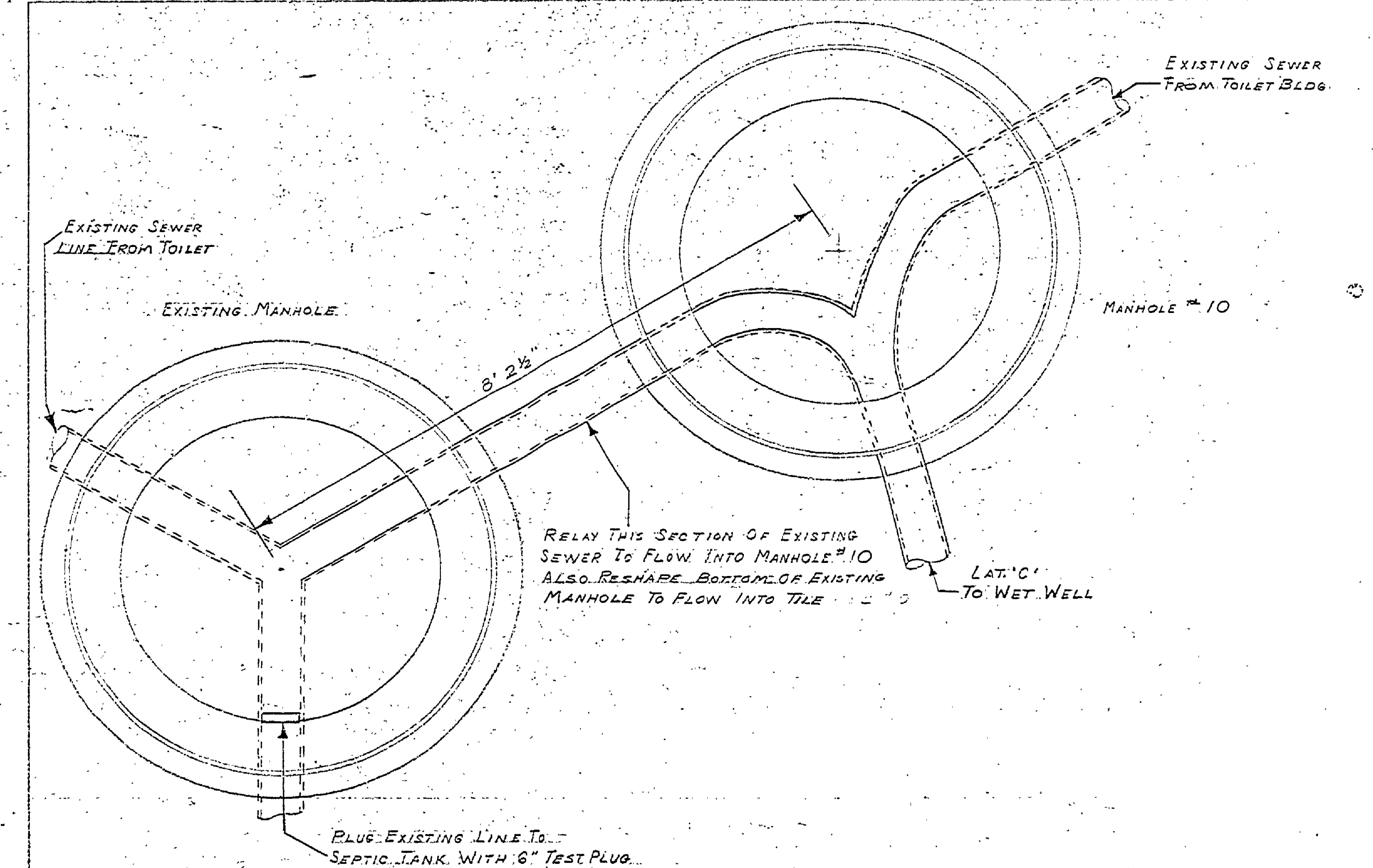
PLAN DETAIL FOR MANHOLE NO. 1



SECTION
DROP MANHOLE
Scale 3/4" = 1'-0"



SECTION
REGULAR MANHOLE
Scale 3/4" = 1'-0"



PLAN DETAIL FOR MANHOLE NO. 10
& EXISTING MANHOLE AT SEPTIC TANK

LEAVE EXISTING
4" VULCANIZED CAST
IRON AT GRADE TO
SEPTIC TANK

NOTE:
REMOVE SECTIONS OF
PIPE IN MANHOLE TO
MEET GRADE OF LAT. 'B'

EXISTING SEWER
LINE FROM TOILET
BLOG

EXISTING SEWER
LINE FROM TOILET

EXISTING MANHOLE

MANHOLE NO. 10

RELAY THIS SECTION OF EXISTING
SEWER TO FLOW INTO MANHOLE NO. 10
ALSO RESHAPE BOTTOM OF EXISTING
MANHOLE TO FLOW INTO TILE

LAT. 'C'
TO WET WELL

PLUG EXISTING LINE TO
SEPTIC TANK WITH 6" TEST PLUG