

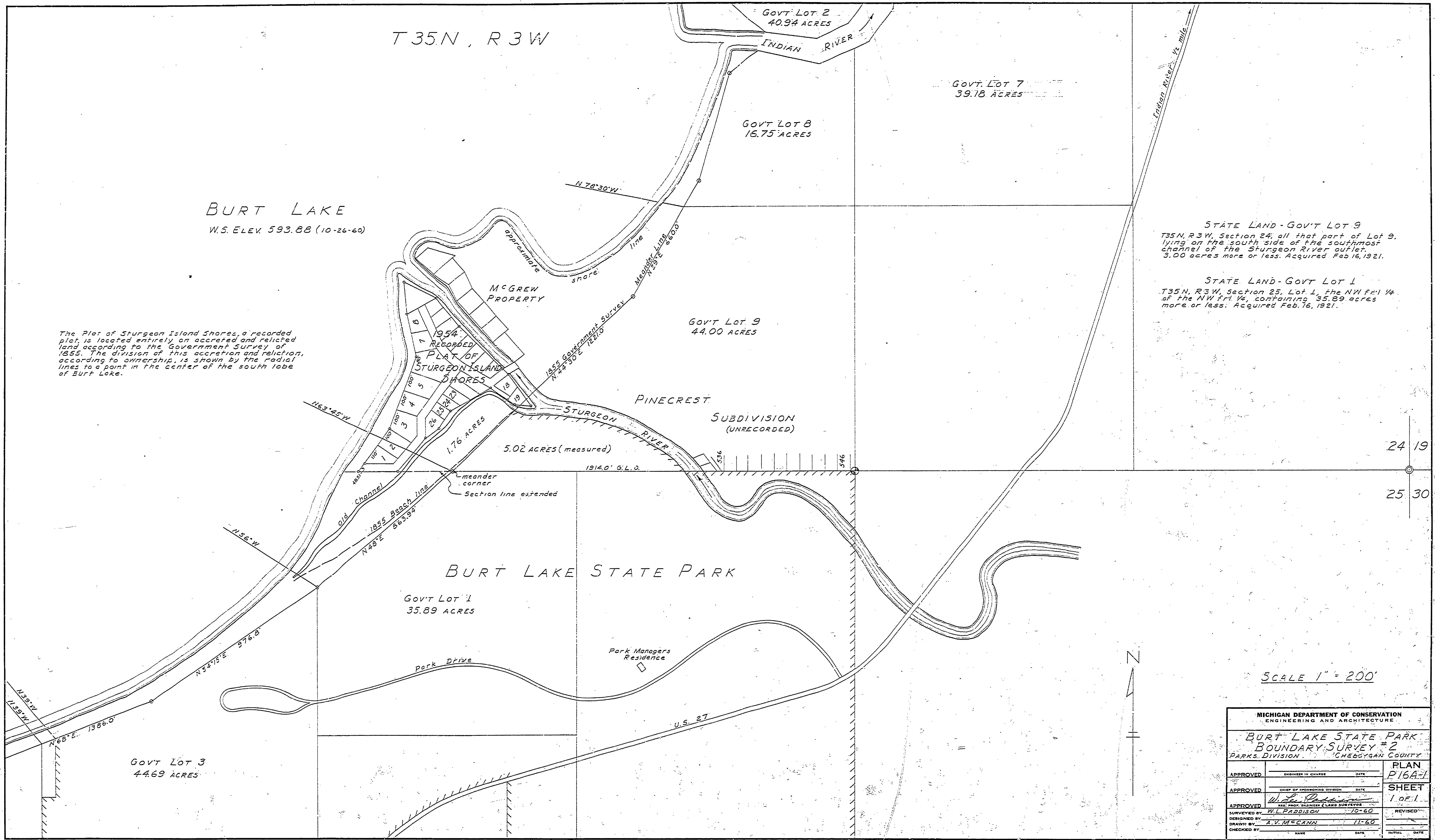
BRUNING 82486
 2 WP 11-7-60
 1 BP 1-25-61

E-117

T 35 N, R 3 W

BURT LAKE
 W.S. ELEV. 593.88 (10-26-60)

The Plat of Sturgeon Island Shores, a recorded plat, is located entirely on accreted and relicted land according to the Government Survey of 1855. The division of this accretion and reliction, according to ownership, is shown by the radial lines to a point in the center of the south lobe of Burt Lake.



STATE LAND - Gov't Lot 9
 T35N, R3W, Section 24, all that part of Lot 9,
 lying on the south side of the southmost
 channel of the Sturgeon River, outlier,
 3.00 acres more or less. Acquired Feb. 16, 1921.

STATE LAND - Gov't Lot 1
 T35N, R3W, Section 25, Lot 1, the NW 1/4
 of the NW 1/4, containing 35.89 acres
 more or less. Acquired Feb. 16, 1921.

24 19
 25 30

SCALE 1" = 200'

MICHIGAN DEPARTMENT OF CONSERVATION ENGINEERING AND ARCHITECTURE			
BURT LAKE STATE PARK BOUNDARY SURVEY # 2 PARKS DIVISION - CHEBOYGAN COUNTY			
APPROVED	ENGINEER IN CHARGE	DATE	PLAN P16A-1
APPROVED	CHIEF OF SPONSORING DIVISION	DATE	SHEET 1 OF 1
APPROVED	W. P. PADDISON SUPV. PROJ. ENGINEER & LAND SURVEYOR	11-60	DESIGNED BY A. V. McCANN
DRAWN BY	A. V. McCANN	11-60	CHECKED BY
CHECKED BY	NAME	DATE	INITIAL DATE

E-117 P16A

E-117