

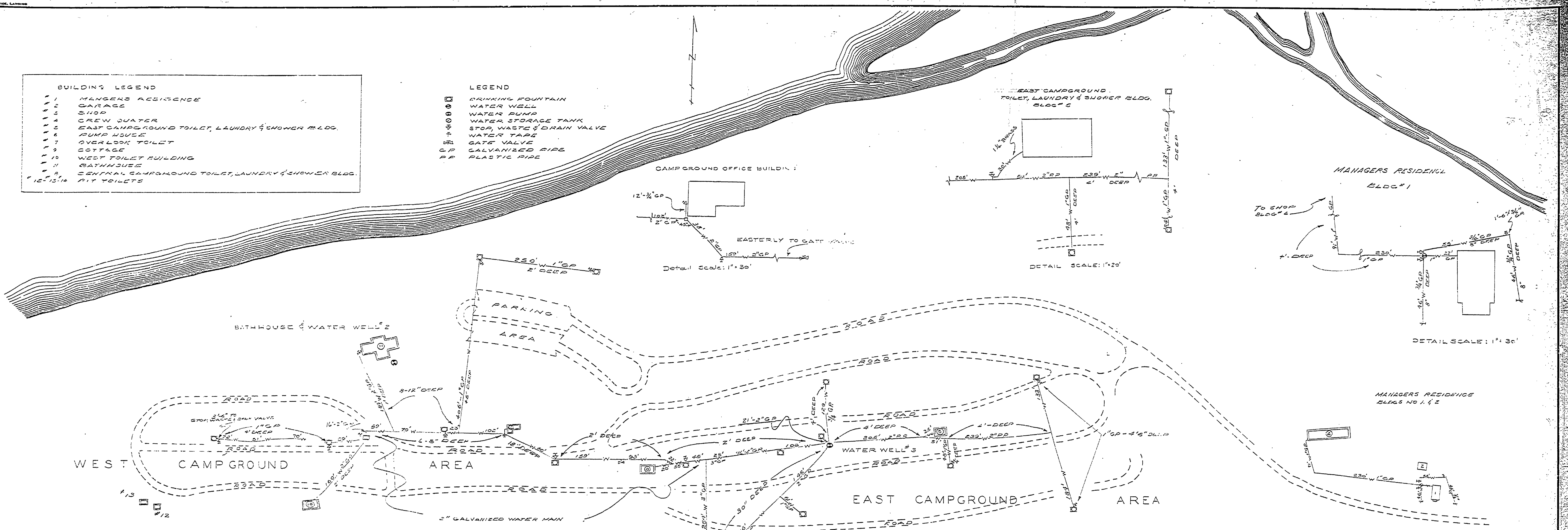
DESIGNED BY	DATE	REVIEWED	DATE	APPROVED	DATE	NO.	DATE	BY
DRAWN BY	1-2-63	ARCHITECTURAL				1		
CHECKED BY		ENGINEERING				2		
		LANDSCAPE				3		
						4		
						5		
						6		

BUILDING LEGEND

- 1 MANAGERS RESIDENCE
- 2 GARAGE
- 3 SHOP
- 4 CREW QUARTER
- 5 EAST CAMPGROUND TOILET, LAUNDRY & SHOWER BLDG.
- 6 PUMP HOUSE
- 7 OVERLOOK TOILET
- 8 COTTAGE
- 9 WEST TOILET BUILDING
- 10 BATHHOUSE
- 11 CENTRAL CAMPGROUND TOILET, LAUNDRY & SHOWER BLDG.
- 12 PIT TOILETS

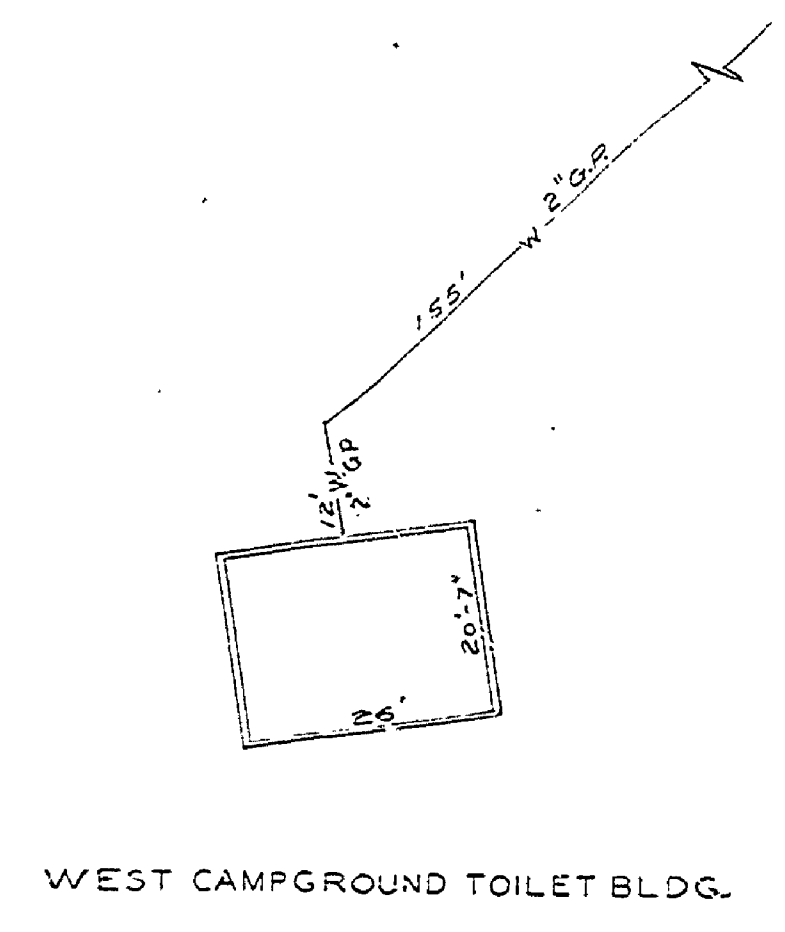
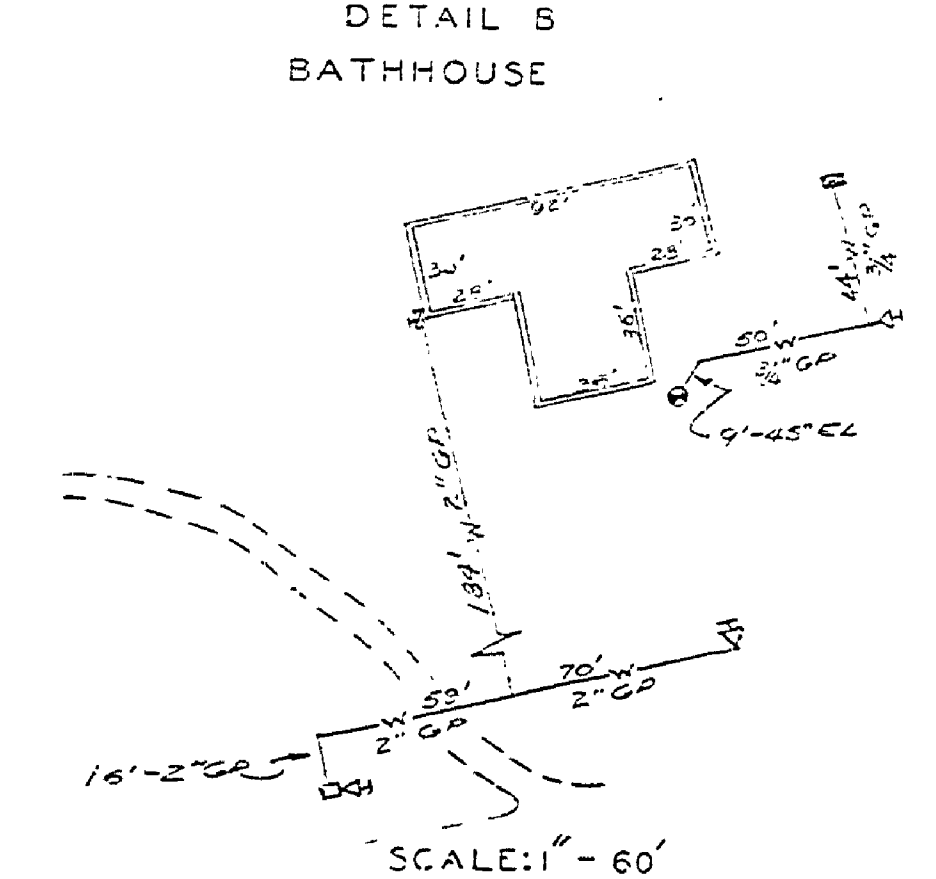
LEGEND

- DRINKING FOUNTAIN
- WATER WELL
- WATER PUMP
- WATER STORAGE TANK
- STOP, WASTE & DRAIN VALVE
- WATER TAP
- GATE VALVE
- GALVANIZED PIPE
- PLASTIC PIPE



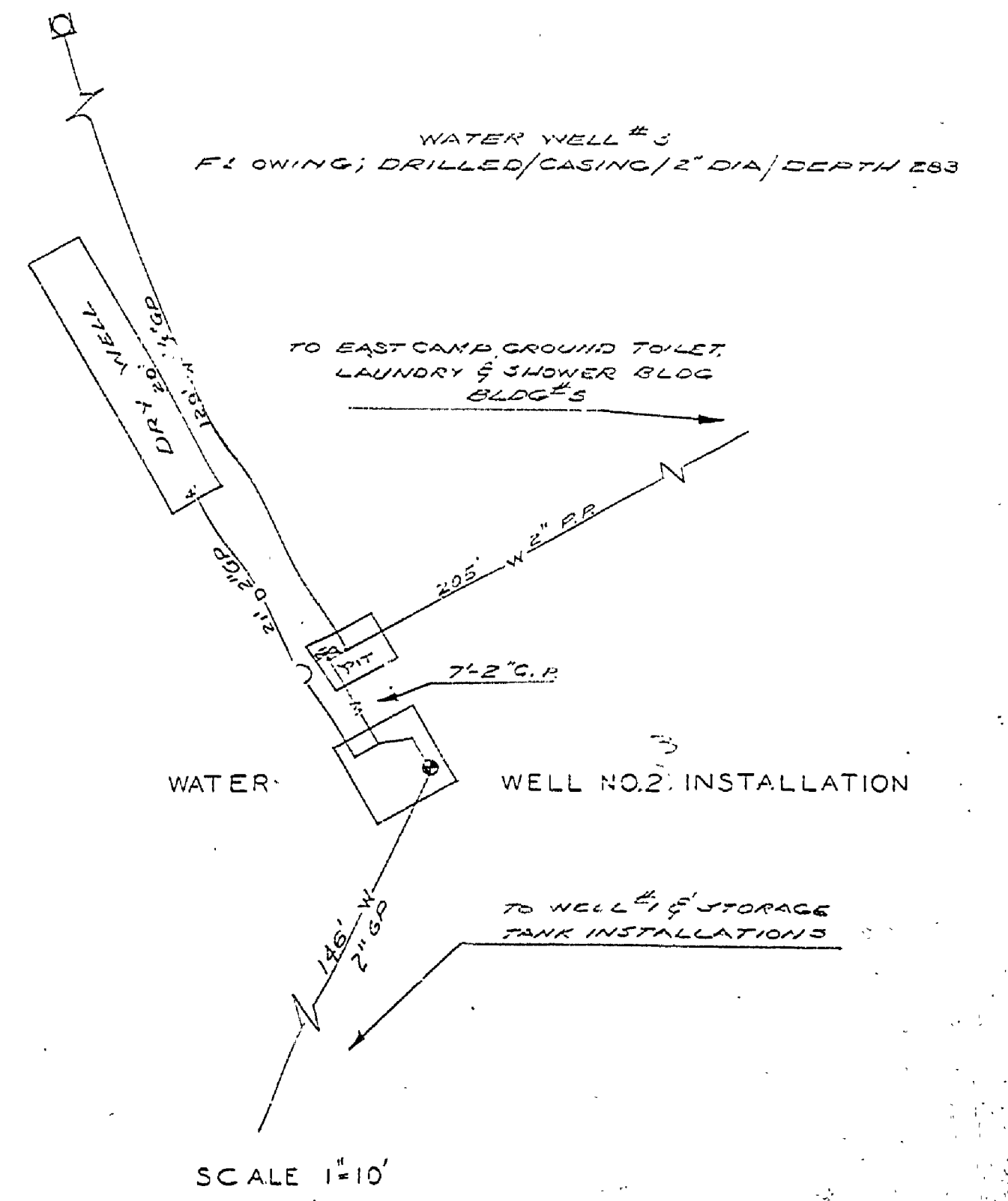
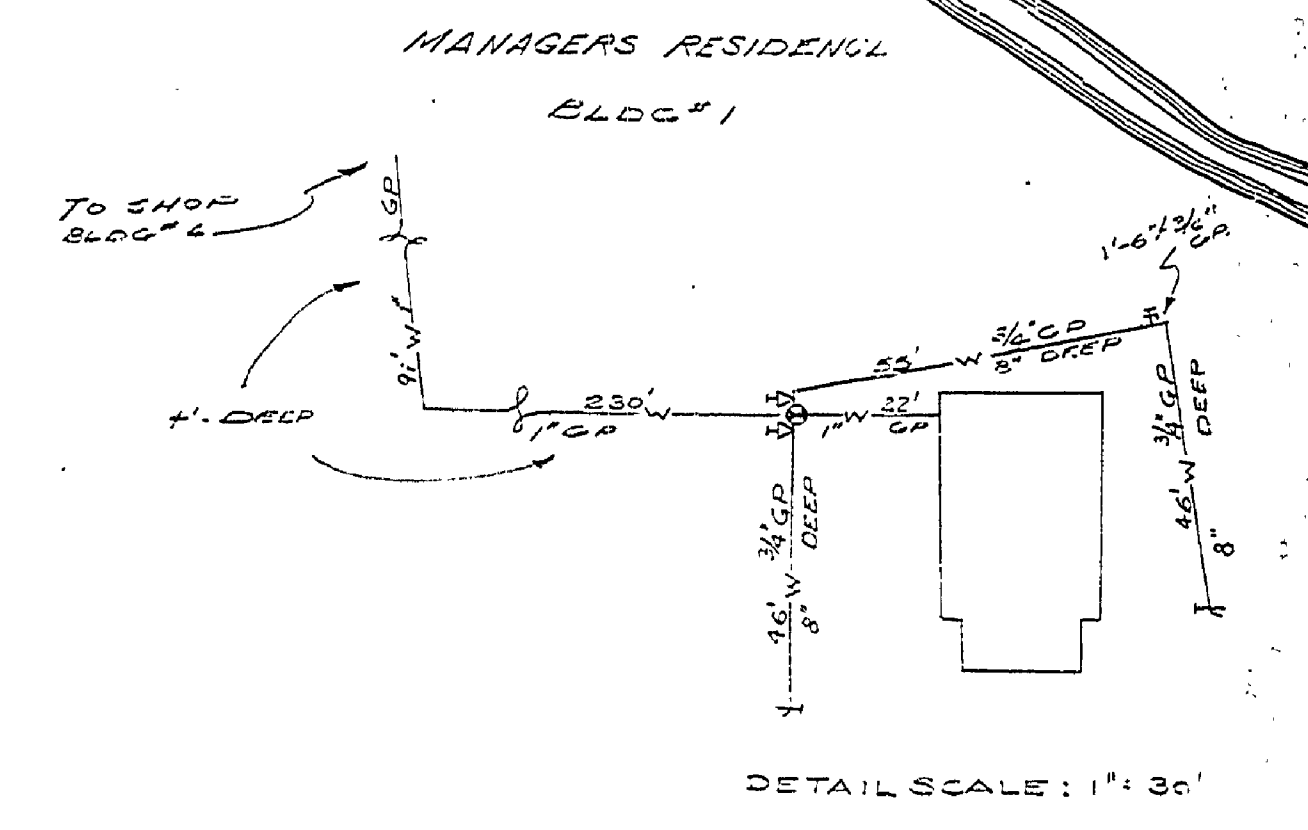
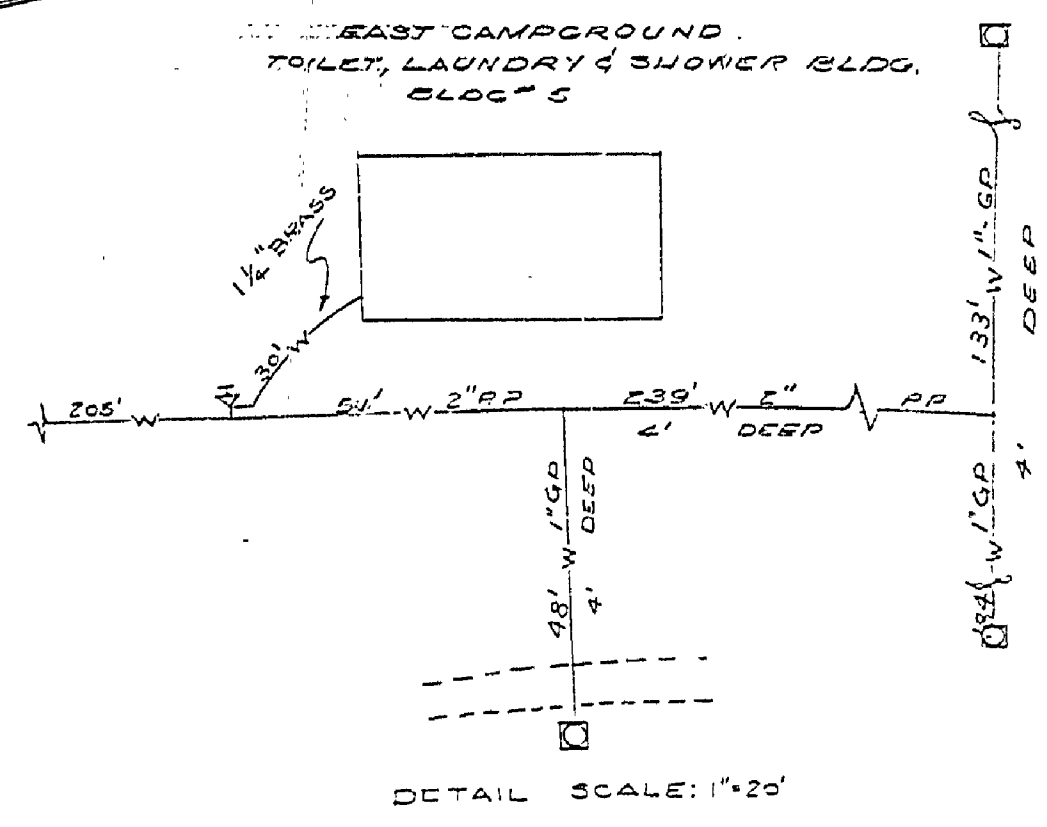
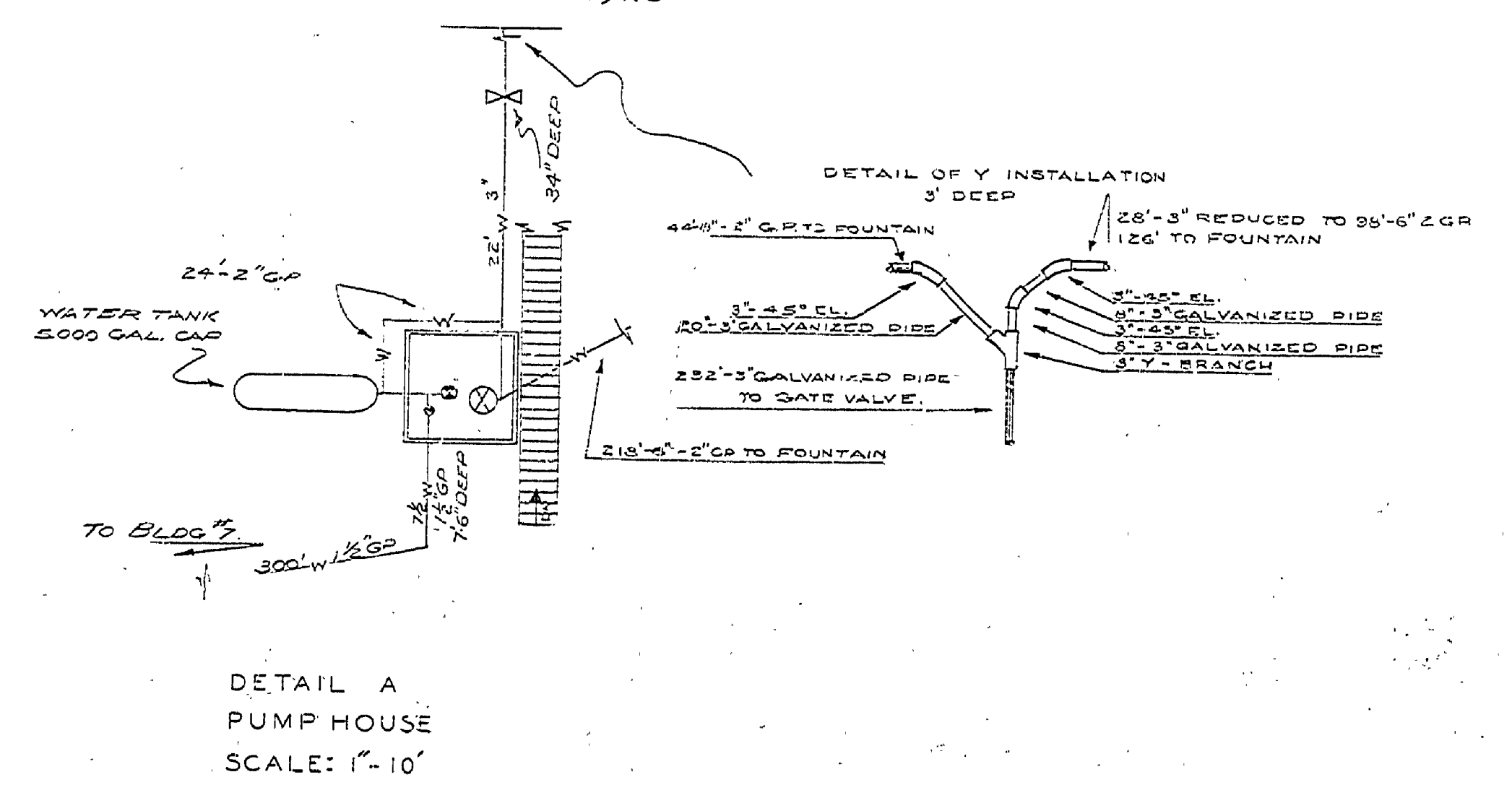
BATHHOUSE BLDG.
WATER WELL #2
FLOWING; DRILLED/CASING/DIA. 2" / DEPTH 240'

WATER PUMP #2 (ECONOMY PUMPING MACHINERY CO.)
JACO 221 - TYPE 1PS - SPEC. A - 1 1/2 HP - 1750 RPM - TYPE KC
MOTOR; BALDOR - TYPE K2B - SPEC. 355 - 1/2 HP
1725 RPM - D 43901



PUMP HOUSE; BLDG #6
WATER WELL #1
FLOWING; DRILLED/CASING/DIA. 2" / DEPTH 230'
STORAGE TANK CAPACITY; 2500 GALLONS

WATER PUMP #1
JACO 221 - TYPE 1PS - SPEC. A - 1 1/2 HP - 1750 RPM - TYPE KC
MOTOR; GE - TRICLAD CAPACITOR MOTOR - #00; 12FS213
TYPE; KC



BURT LAKE STATE PARK

SCALE: 1" = 100'

MICHIGAN
DEPARTMENT OF CONSERVATION
PARKS AND RECREATION DIVISION

BURT LAKE STATE PARK
UTILITY MAP
WATER SYSTEM

SHEET
NO. 2
OF 3

PLAN NO.
U-1