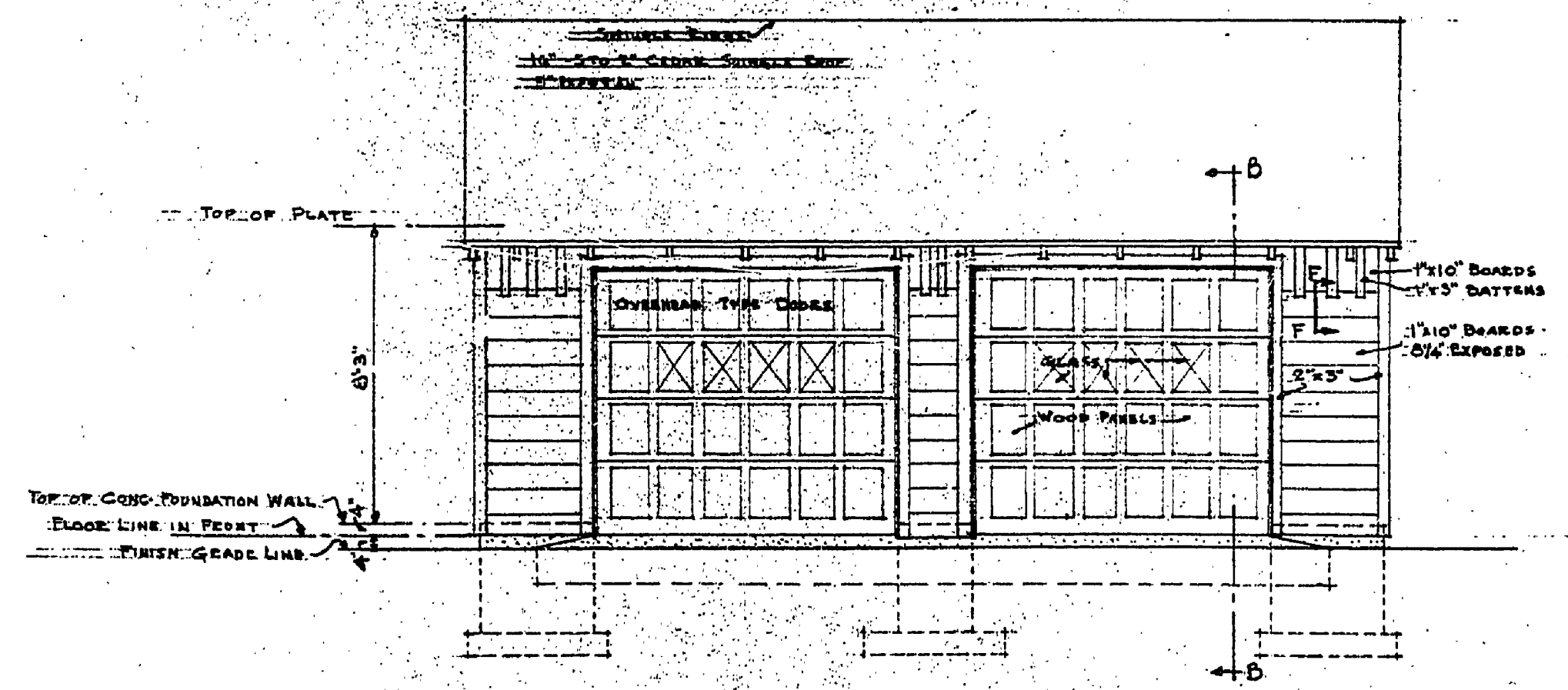


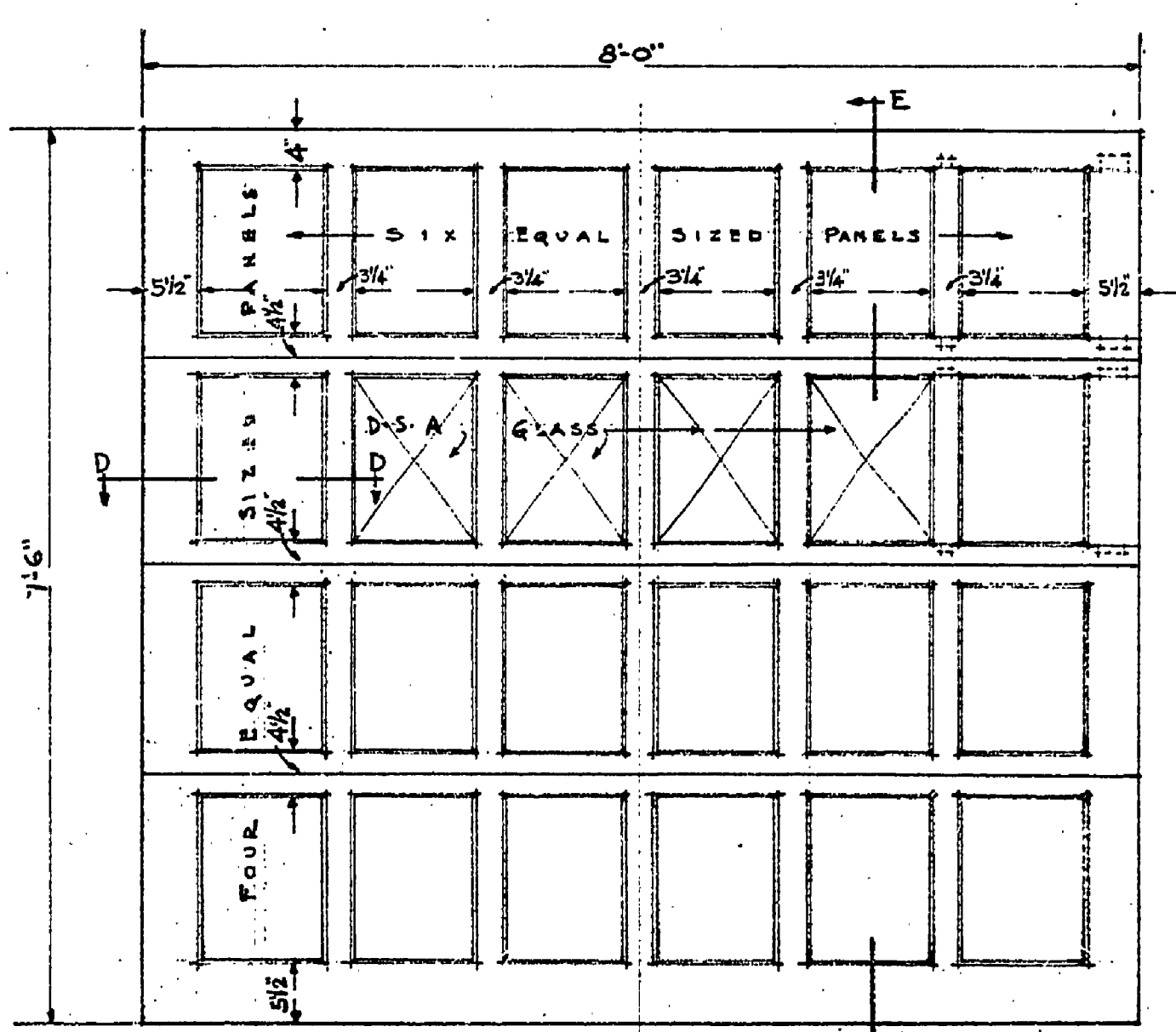
SECTION AT A-A

TYPICAL END ELEVATION

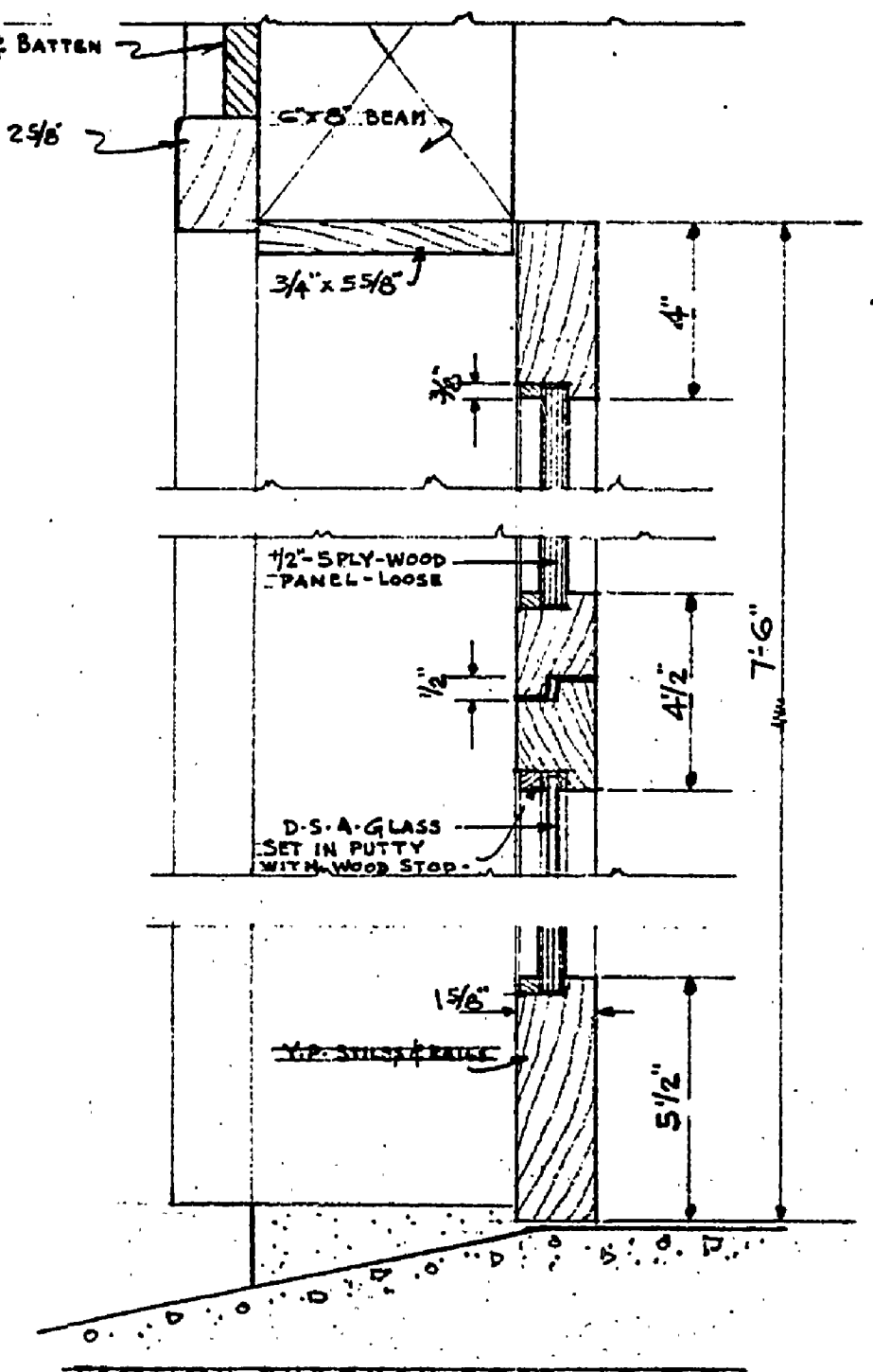
SECTION B-B THROUGH FRONT WALL SECTION C-C THROUGH END WALL



FRONT ELEVATION

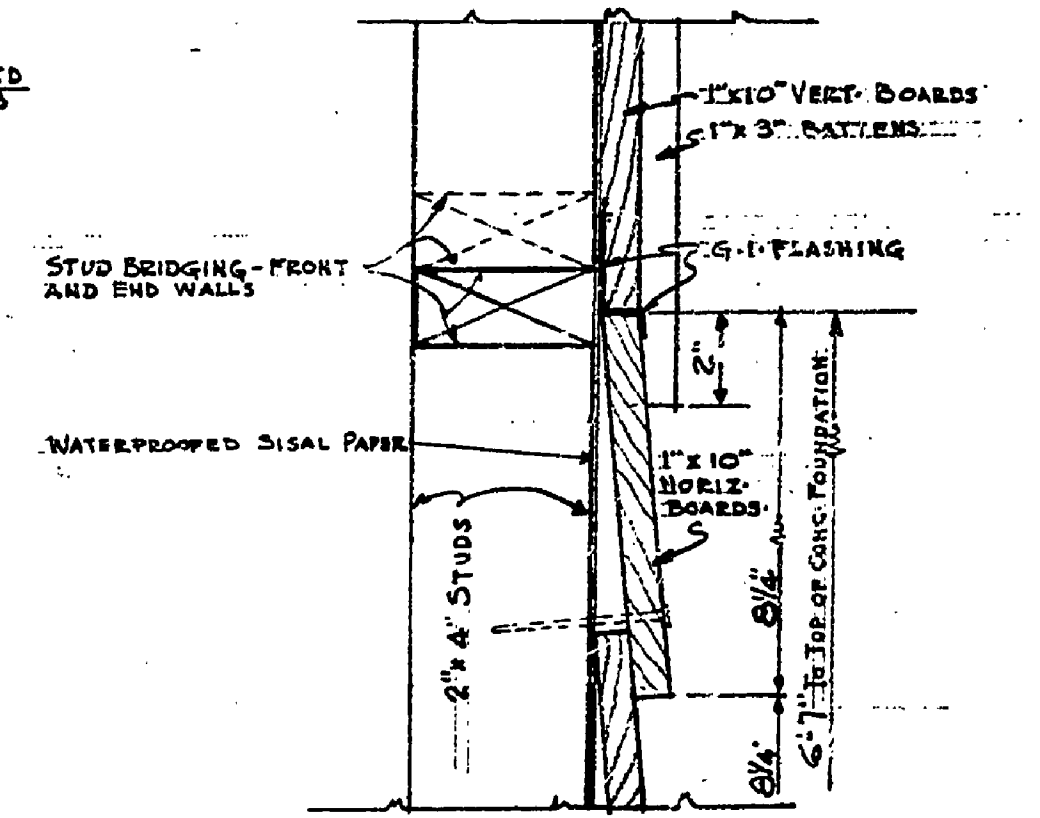


EXTERIOR ELEVATION GARAGE DOOR

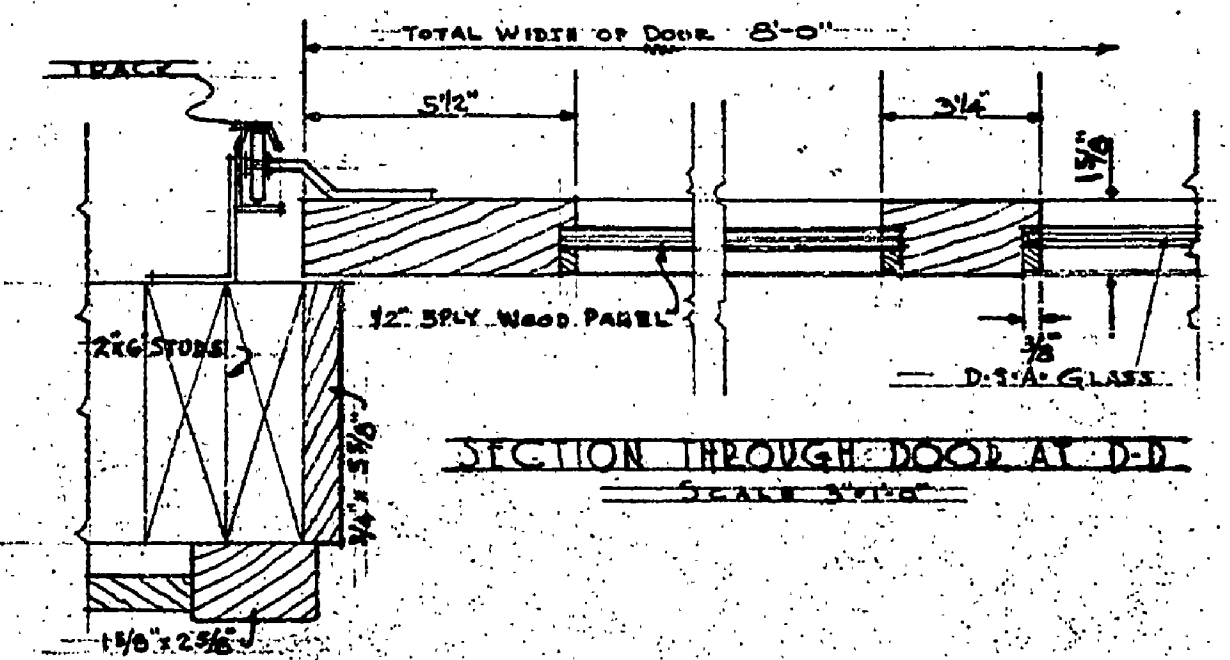


SECTION THROUGH DOOR AT E-E

TOP WINDOW FRAME DETAIL



WALL SECTION AT F-F



SECTION THROUGH DOOR AT D-D

INSURANCE No. 9

UNITED STATES			
DEPARTMENT OF THE INTERIOR			
NATIONAL PARK SERVICE			
BRANCH OF PLANS AND DESIGN - REGION II			
COOPERATING WITH			
MICHIGAN DEPARTMENT OF CONSERVATION			
DRAWN BY	YANKEE SPRINGS	DATE	
DESIGNED BY	RECREATION DEMONSTRATION AREA	SCALE	
CHECKED BY	CUSTODIANS GARAGE	NO.	11-MIG
APPROVED BY		DATE	Oct. 13, 1939
RECORDED BY	STATE PARK AUTHORITY	DATE	
APPROVED BY	INSPECTOR	DATE	