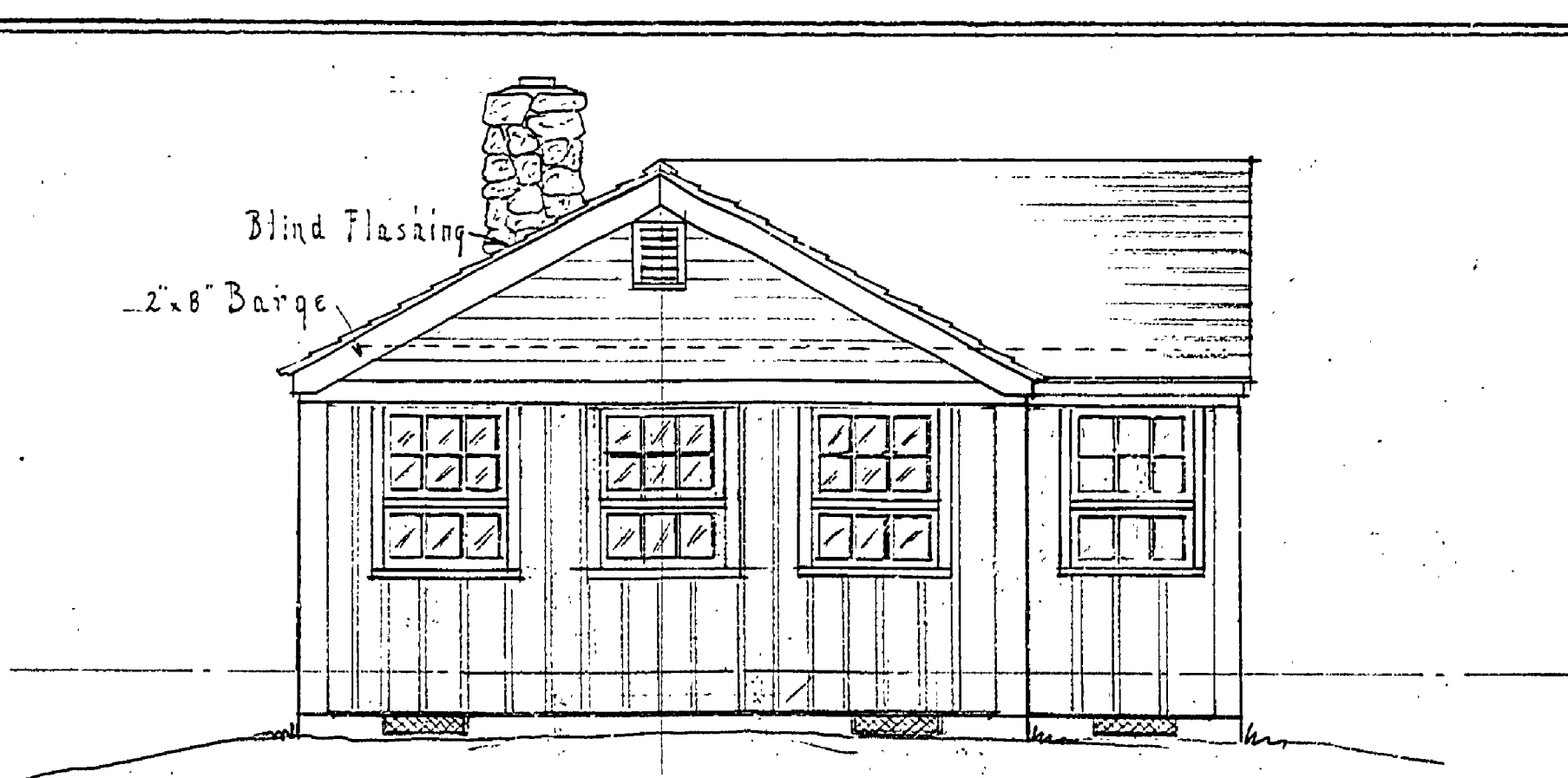
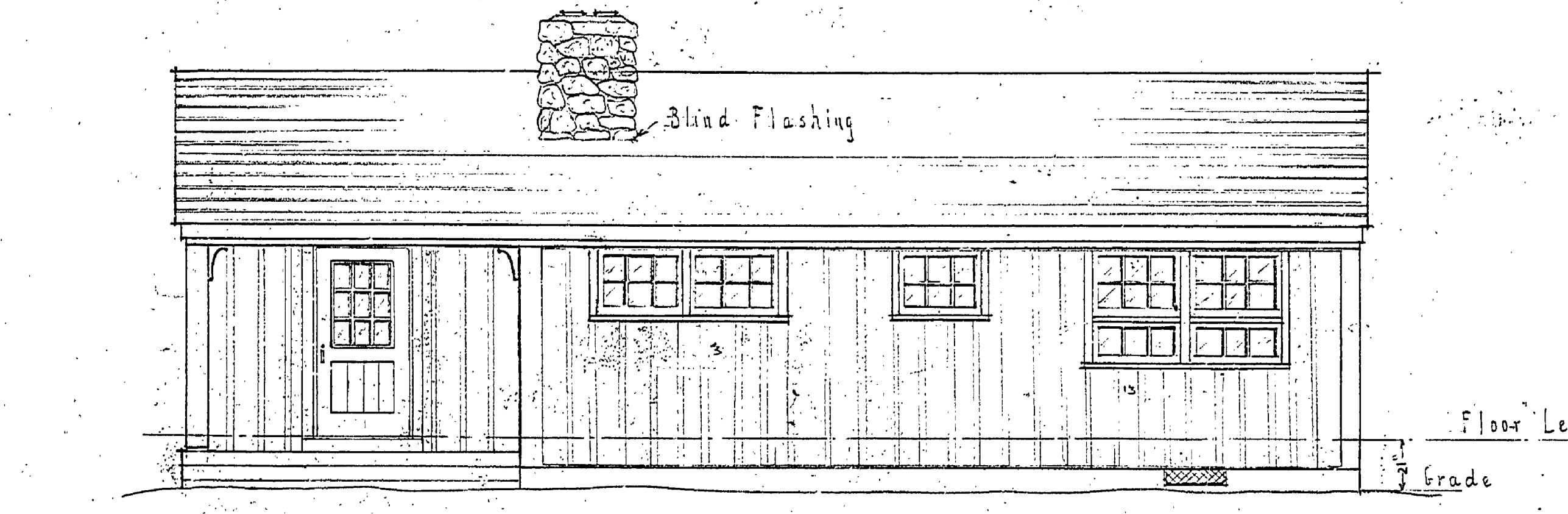


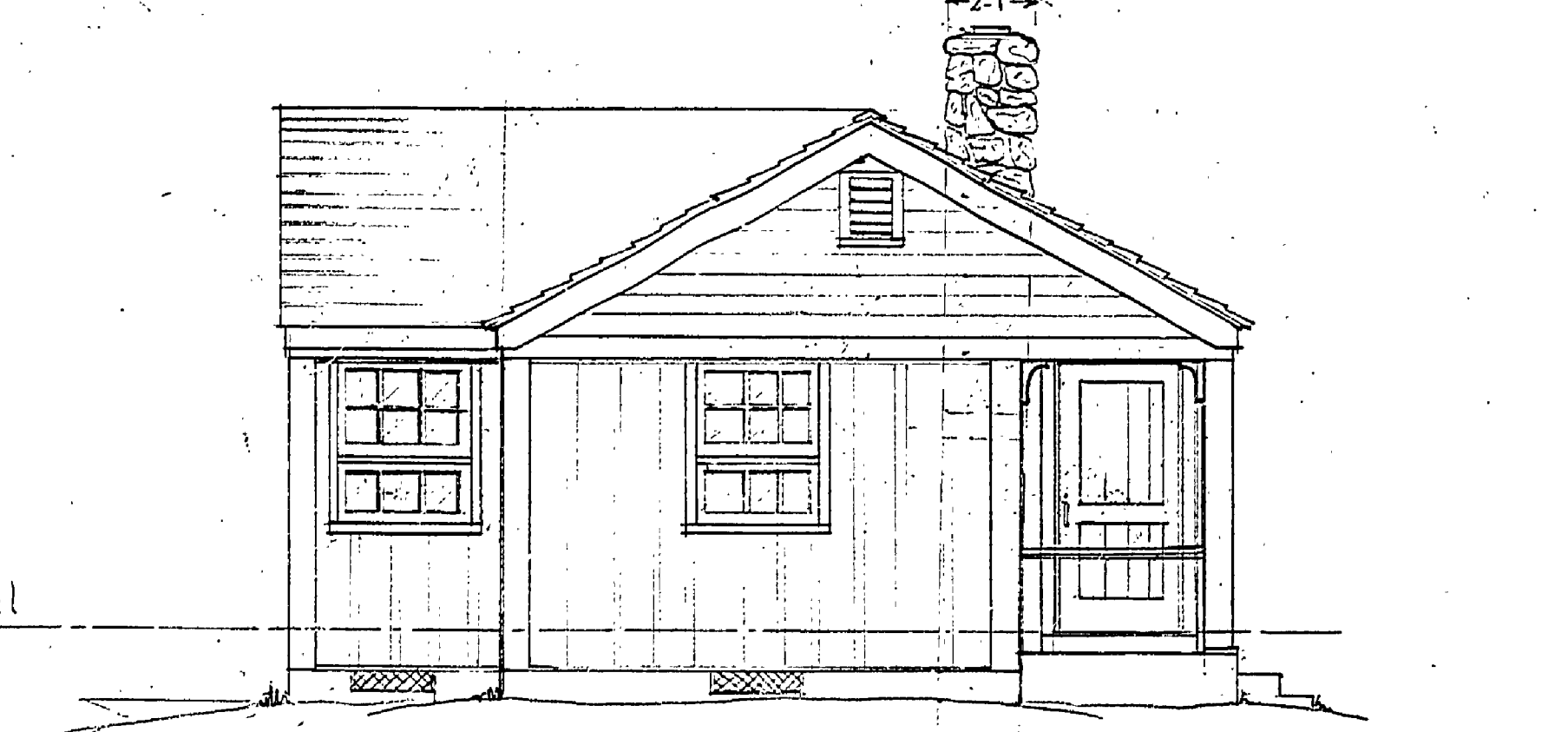
REAR ELEVATION  
Scale 1/4" = 1'-0"



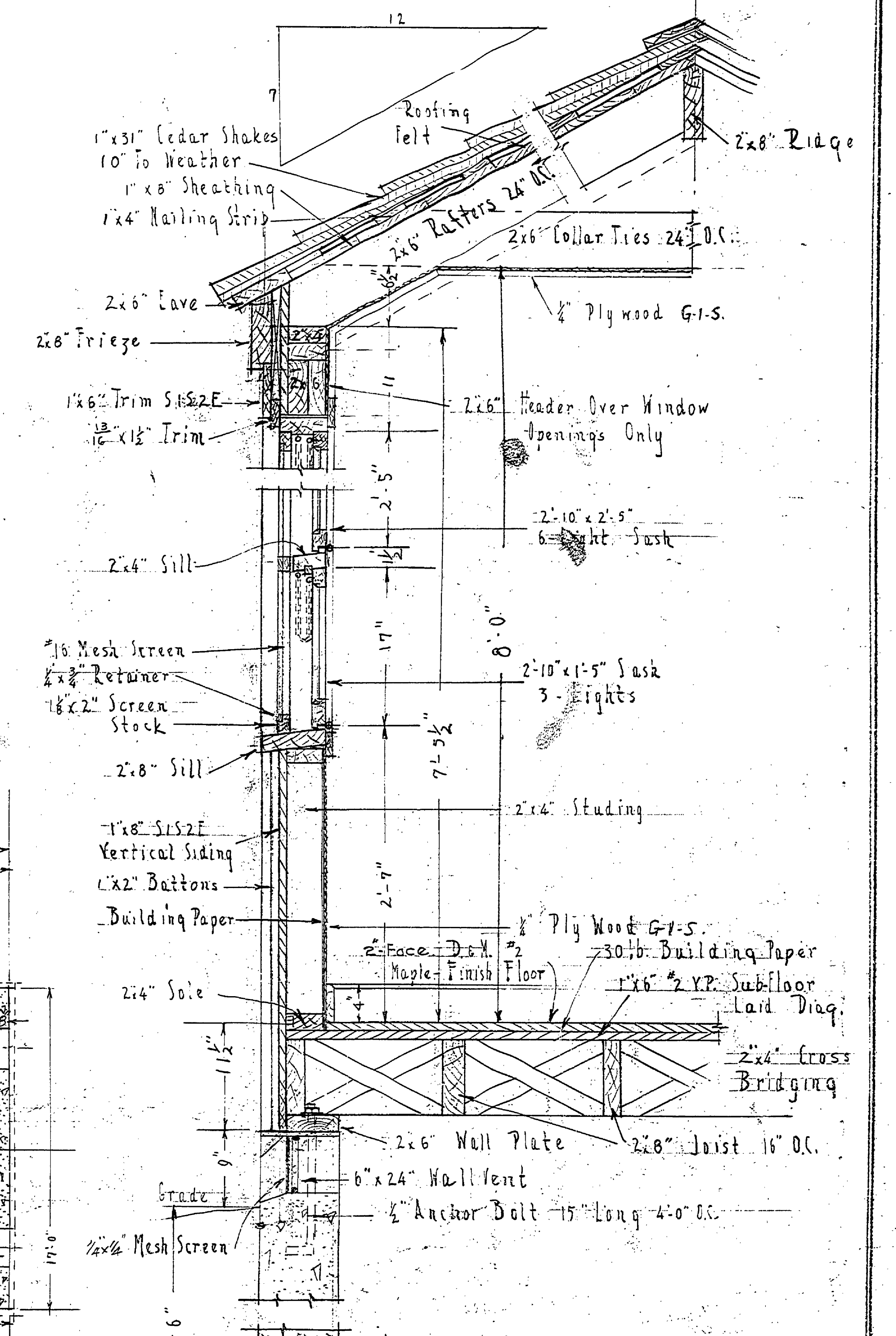
SIDE ELEVATION  
Scale 1/4" = 1'-0"



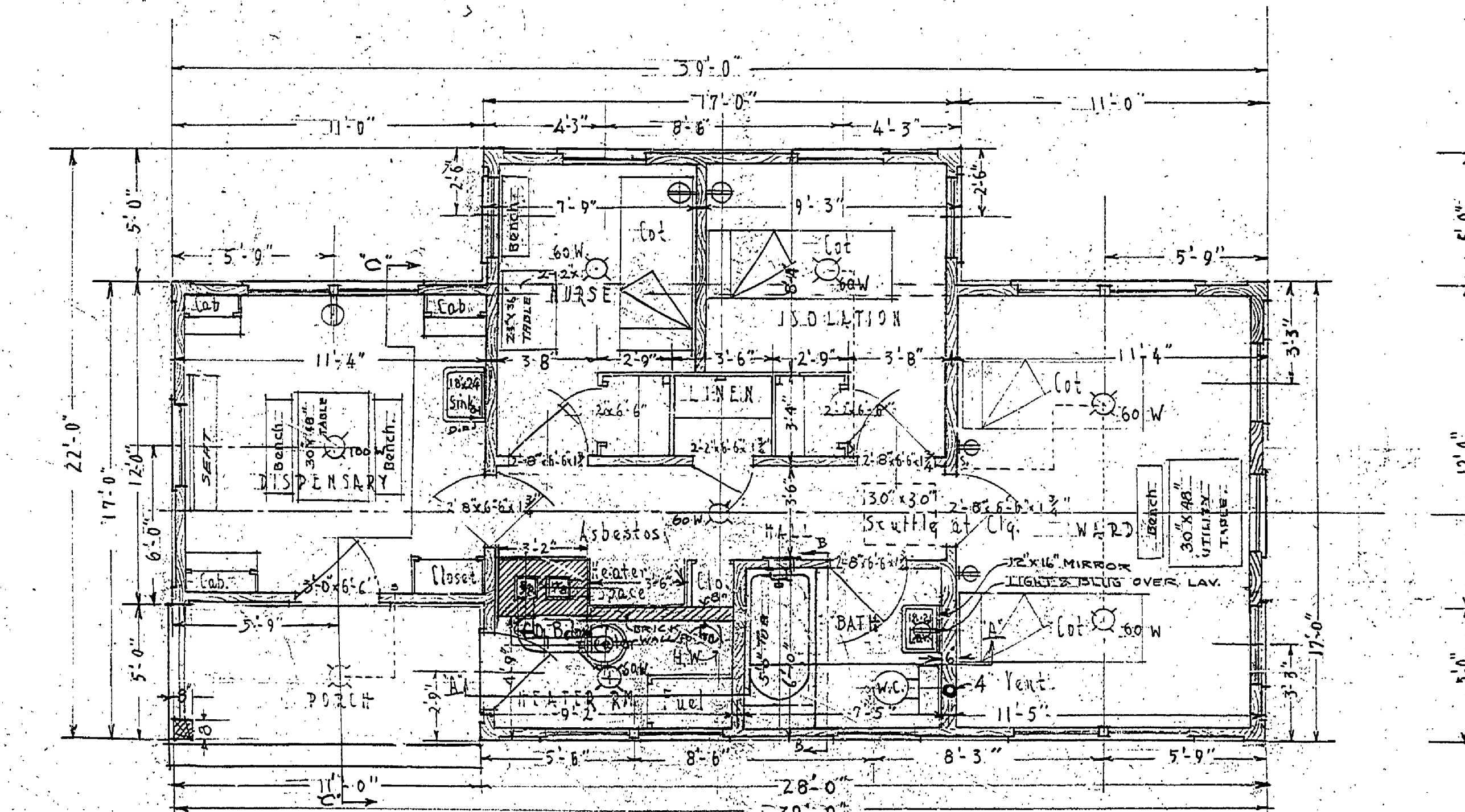
FRONT ELEVATION  
Scale 1/4" = 1'-0"



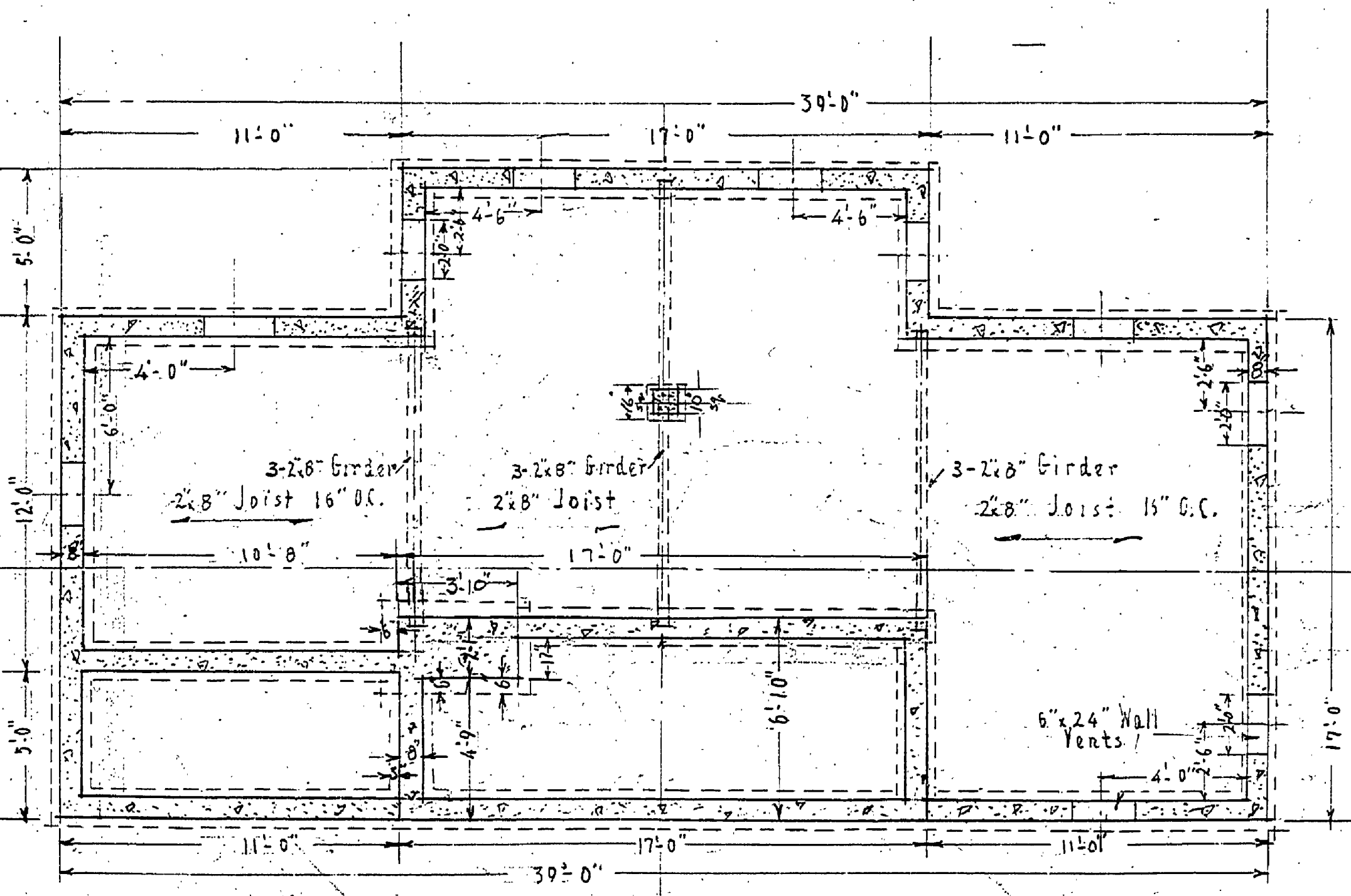
SIDE ELEVATION  
Scale 1/4" = 1'-0"



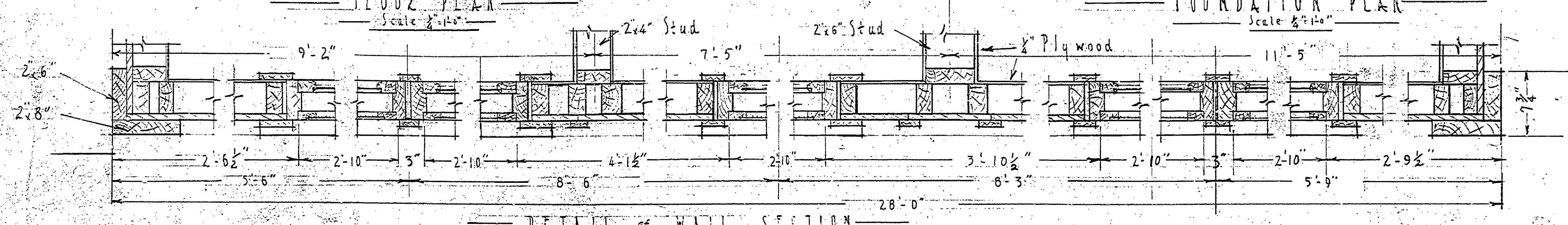
VERTICAL WALL SECTION  
Scale 1 1/2" = 1'-0"



FLOOR PLAN  
Scale 1/4" = 1'-0"



FOUNDATION PLAN  
Scale 1/4" = 1'-0"



DETAIL OF WALL SECTION  
Scale 1 1/2" = 1'-0"

UNITED STATES DEPARTMENT OF THE INTERIOR NATIONAL PARK SERVICE COOPERATING WITH MICHIGAN CONSERVATION DEPARTMENT		
DRAWN BY <i>B. Hancock</i> DESIGNED BY <i>ERC</i> CHECKED BY <i>ERC</i>	YANKEE SPRINGS PROJECT INFIRMARY LONG LAKE	PLAN 90-43 SCALE AS SHOWN I. D. M. S. DATE 9-9-38
PREPARED AND APPROVED BY <i>James R. Johnson</i>	PROJECT MANAGER	DATE 10-12-38
RECOMMENDED APPROVED	DEPUTY DIRECTOR MICH. DEPT. OF CON.	DATE
INSPECTOR	REGIONAL DIRECTOR	DATE

INSURANCE No. 59 #59

Job #18