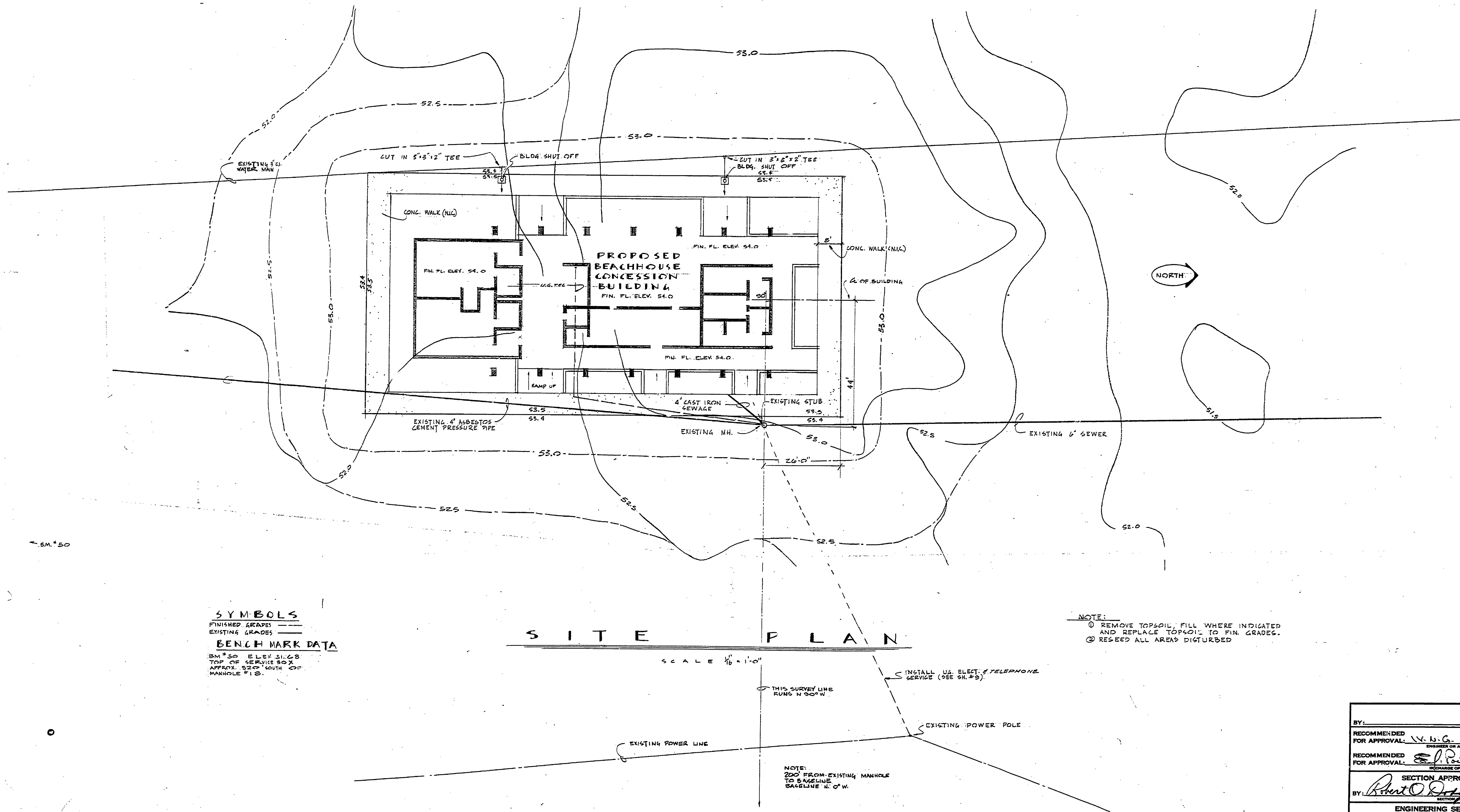


# YANKEE SPRINGS RECREATION AREA BEACHHOUSE CONCESSION BUILDING



**SYMBOLS**  
 FINISHED GRADES ———  
 EXISTING GRADES - - - -  
**BENCH MARK DATA**  
 BM #50 ELEV 51.08  
 TOP OF SERVICE BOX  
 APPROX. 52'-0" SOUTH OF  
 MANHOLE #10.

**NOTE:**  
 ① REMOVE TOPSOIL, FILL WHERE INDICATED  
 AND REPLACE TOPSOIL TO FIN. GRADES.  
 ② RESEED ALL AREAS DISTURBED

**NOTE:**  
 200' FROM EXISTING MANHOLE  
 TO SAGELINE  
 SAGELINE N. OF W.

SURVEYED BY	DESIGNED BY	DATE	CHECKED BY	DATE	NO.	DATE	BY	REVISIONS	NO.	DATE	BY	REVISIONS
			JAC.	12-66	1.				2.			
					2.				3.			
									4.			

MICHIGAN  
DEPARTMENT OF CONSERVATION

YANKEE SPRINGS RECREATION AREA  
BEACHHOUSE CONCESSION  
BUILDING

SHEET NO. 1 OF 2  
FOR PROJECT NO. Pa 900-9972-976-023-CL

BY:	DATE:
RECOMMENDED FOR APPROVAL: <i>W. B. G.</i>	5-23-67
RECOMMENDED FOR APPROVAL: <i>E. P. Paul</i>	5-28-67
SECTION APPROVAL BY: <i>Robert O. Dreyer</i>	2-13-68
ENGINEERING SECTION APPROVED: <i>H. C. Maclean</i>	2-17-68
COVER SHEET	
SHEET 1 OF 2	PLAN NO. A-139